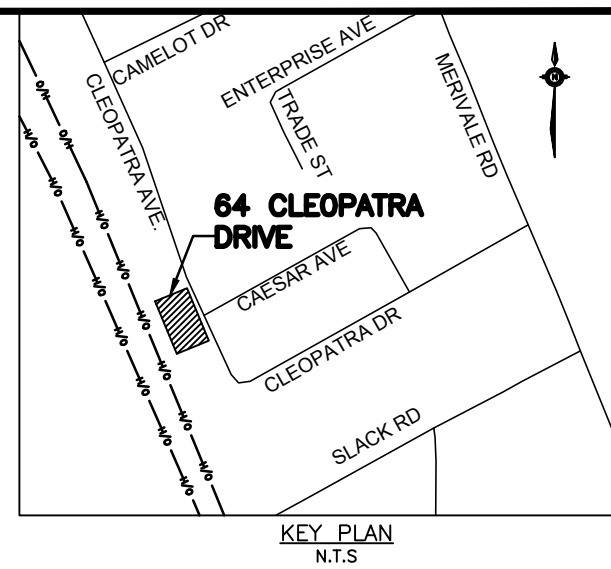


All Hamlin

ALLISON HAMLIN
 MANAGER (A), DEVELOPMENT REVIEW WEST
 PLANNING, REAL ESTATE & ECONOMIC DEVELOPMENT
 DEPARTMENT, CITY OF OTTAWA



APPROVED
 By Allison Hamlin at 10:41 am, May 09, 2023

REMOVALS

- ASPHALT REMOVAL (ROAD, DRIVEWAYS, PARKING AREAS)
- ASPHALT SIDEWALK REMOVAL
- GRAVEL DRIVEWAY REMOVAL
- CONCRETE SIDEWALK REMOVAL
- TOPSOIL REMOVAL
- REMOVE MANHOLE, CATCHBASIN, VALVE, HYDRANT, ETC.
- REMOVE LS, BOLLARD & CONCRETE BASE
- ADJUST MANHOLE
- REMOVE EXISTING STORM SEWER
- REMOVE EXISTING SANITARY SEWER
- REMOVE EXISTING WATERMAIN
- REMOVE EXISTING FENCE
- REMOVE EXISTING CONCRETE CURB
- REMOVE SIGN

NOTES- REMOVALS
 LOCATE EXISTING WELL SERVICING EXISTING BUILDING AND DECOMMISSION. DECOMMISSIONING MUST BE DONE BY A LICENSED WELL CONTRACTOR IN ACCORDANCE WITH WELLS REGULATION (R.R.O 1990 REGULATION 903) AS PER ONTARIO WATER RESOURCE ACT.

Aug 23, 2022 I:\DRAWINGS\19028-1 64 Cleopatra\Design\001 - 19028 - REM1.dwg

NOTES

OWNER:
 2336925 ONTARIO INC.
 64 CLEOPATRA DRIVE
 OTTAWA, ONTARIO
 K2G 0B4

CONTRACT DRAWINGS:
 Contractor must verify all dimensions and be responsible for same. Any discrepancies must be reported to the Engineer before commencing work. Drawings are not to be scaled. Drawings may not be used for any purpose other than that stipulated in the contract agreement between the owner/client and the Engineer without the express written consent of Anley Graham & Associates Limited. Use of these drawings by any party for any other purpose is subject to the following caution.

CAUTION: The information contained in this drawing is solely for the intended recipient. Any copying, distribution or use by others without the express written consent of Anley Graham & Associates Limited is prohibited. The recipient is responsible for confirming the accuracy and completeness of the information with the originator. The recipient assumes all risks and liabilities associated with the use of the drawings. The recipient will save and hold harmless Anley Graham & Associates Limited for any claims whatsoever associated with or related to the use of the drawings. The recipient will not reuse any portion of the drawings for any future project without the express written permission of Anley Graham & Associates Limited.

NO.	REVISIONS	DATE	INITIAL
5	REVISED SANITARY LATERAL TO REFLECT EXISTING LOCATION AT BUILDING	AUG 23/22	JX
4	RE-ISSUED FOR SITE PLAN APPROVAL	JAN 07/22	JX
3	RE-ISSUED FOR SITE PLAN APPROVAL	JUNE 07/21	JX
2	RE-ISSUED FOR SITE PLAN APPROVAL	JUNE 19/20	JX
1	ISSUED FOR SITE PLAN APPROVAL	MAY 24/19	GSC

Not Valid Unless Signed And Dated

Professional Engineers
 Ontario
 AUGUST 23, 2022
Limited Licensee
 Name: JWXU
 Number: 100171806
 Category: CIVIL: see limitation
 Limitations:
 This licence is subject to the limitations as detailed on the certificate.
 Association of Professional Engineers of Ontario

SCALE: 1 : 250
 DESIGN: JX
 DRAWN: MH
 CHECKED: GSC
 DATE: MAY 2019

BUILDING ADDITION
 64 CLEOPATRA DRIVE
 CITY OF OTTAWA

REMOVALS AND ADJUSTMENTS

Anley GROUP CONSULTING ENGINEERS PLANNERS

CONTRACT No. 19028 | 001-19028-REM1

City File No. D07-12-16-0029