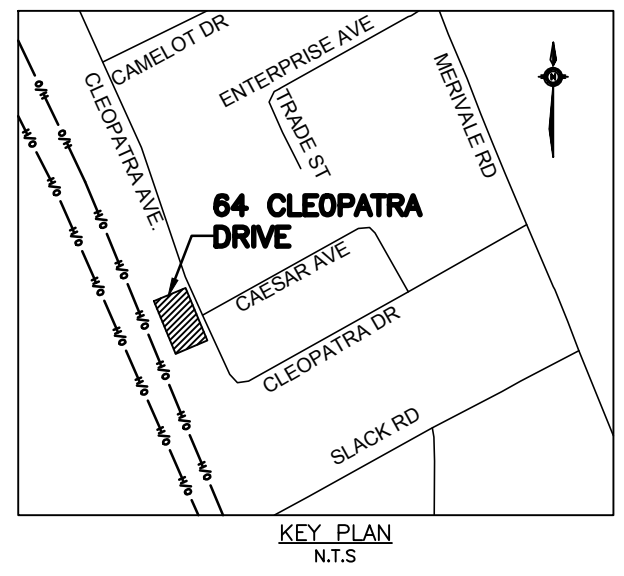


All Hamlin

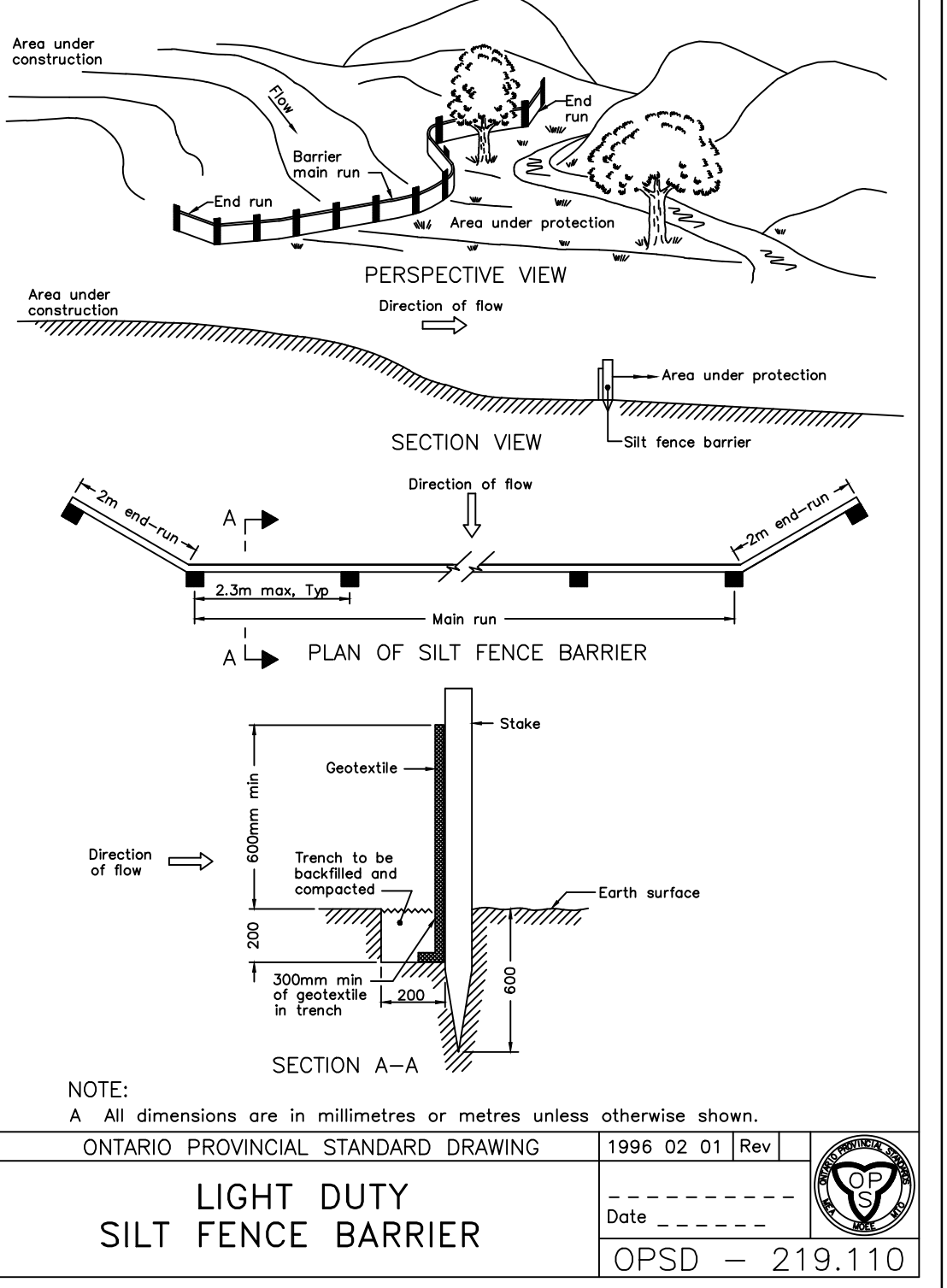
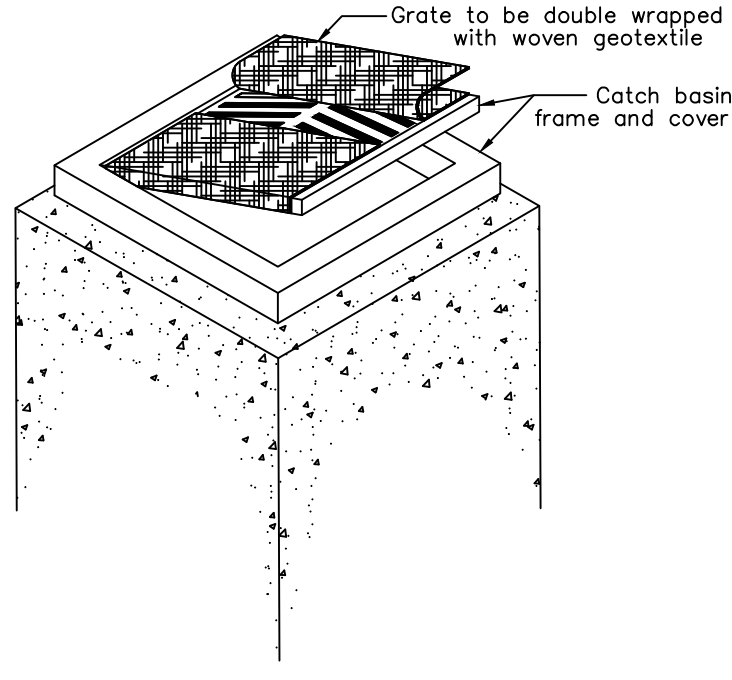
ALLISON HAMLIN
MANAGER (A), DEVELOPMENT REVIEW WEST
PLANNING, REAL ESTATE & ECONOMIC DEVELOPMENT
DEPARTMENT, CITY OF OTTAWA



APPROVED
 By Allison Hamlin at 10:41 am, May 09, 2023

TEMPORARY EROSION & SEDIMENT CONTROL NOTES

1. A MUD MAT IS TO BE INSTALLED PRIOR TO COMMENCING CONSTRUCTION AND TO BE MAINTAINED UNTIL ALL CONSTRUCTION IS COMPLETED. MUD MAT SHOULD BE SUFFICIENT LENGTH TO ENSURE THAT A MINIMUM AMOUNT OF MATERIAL IS TRUCKED OFF SITE ONTO ADJACENT ROADS.
2. SILT FENCES SHALL BE INSTALLED AROUND THE PERIMETER OF THE SITE AND MAINTAINED UNTIL THE COMPLETION OF THE LANDSCAPE WORKS. (SEE DETAIL - OPSD 219.110)
3. CATCHBASIN SEDIMENT PROTECTION IS TO BE INSTALLED AT ALL CATCHBASIN AND CATCHBASIN MANHOLE LOCATIONS ALONG CLEOPATRA DRIVE AND ARE TO BE MAINTAINED UNTIL ALL CONSTRUCTION IS COMPLETED. (SEE DETAIL BELOW)



NOTES

OWNER:
 2336925 ONTARIO INC.
 64 CLEOPATRA DRIVE
 OTTAWA, ONTARIO
 K2G 0B4

CONTRACT DRAWINGS:
 Contractor must verify all dimensions and be responsible for same. Any discrepancies must be reported to the Engineer before commencing work. Drawings are not to be copied, distributed or used by others without the express written consent of Anley Graham & Associates Limited. Use of these drawings by any party for any other purpose is subject to the following caution.

CAUTION: The information contained in this drawing is solely for the intended recipient. Any copying, distribution or use by others without the express written consent of Anley Graham & Associates Limited is prohibited. The recipient is responsible for confirming the accuracy and completeness of the information with the originator. The recipient assumes all risks and liabilities associated with the use of the drawings. The recipient will save and hold harmless Anley Graham & Associates Limited for any claims whatsoever associated with or related to the use of the drawings. The recipient will not reuse any portion of the drawings for any future project without the express written permission of Anley Graham & Associates Limited.

NO.	REVISIONS	DATE	INITIAL
5	REVISED SANITARY LATERAL TO REFLECT EXISTING LOCATION AT BUILDING	AUG 23/22	JX
4	RE-ISSUED FOR SITE PLAN APPROVAL	JAN 07/22	JX
3	RE-ISSUED FOR SITE PLAN APPROVAL	JUNE 07/21	JX
2	RE-ISSUED FOR SITE PLAN APPROVAL	JUNE 19/20	JX
1	ISSUED FOR SITE PLAN APPROVAL	MAY 24/19	GSC

Not Valid Unless Signed And Dated

Professional Engineers
 Ontario
 AUGUST 23, 2022
Limited Licensee
 Name: JWXU
 Number: 100171806
 Category: CIVIL: see limitation
 Limitations:
 This licence is subject to the limitations as detailed on the certificate.
 Association of Professional Engineers of Ontario

SCALE: 1 : 250
 DESIGN: JX
 DRAWN: MH
 CHECKED: GSC
 DATE: MAY 2019

BUILDING ADDITION
64 CLEOPATRA DRIVE
CITY OF OTTAWA

EROSION AND SEDIMENT CONTROL PLAN

INLEY GROUP CONSULTING ENGINEERS PLANNERS

CONTRACT No. 19028 004-19028-SC1

ONTARIO PROVINCIAL STANDARD DRAWING 1996 02 01 Rev 1
 LIGHT DUTY SILT FENCE BARRIER
 OPSD - 219.110