



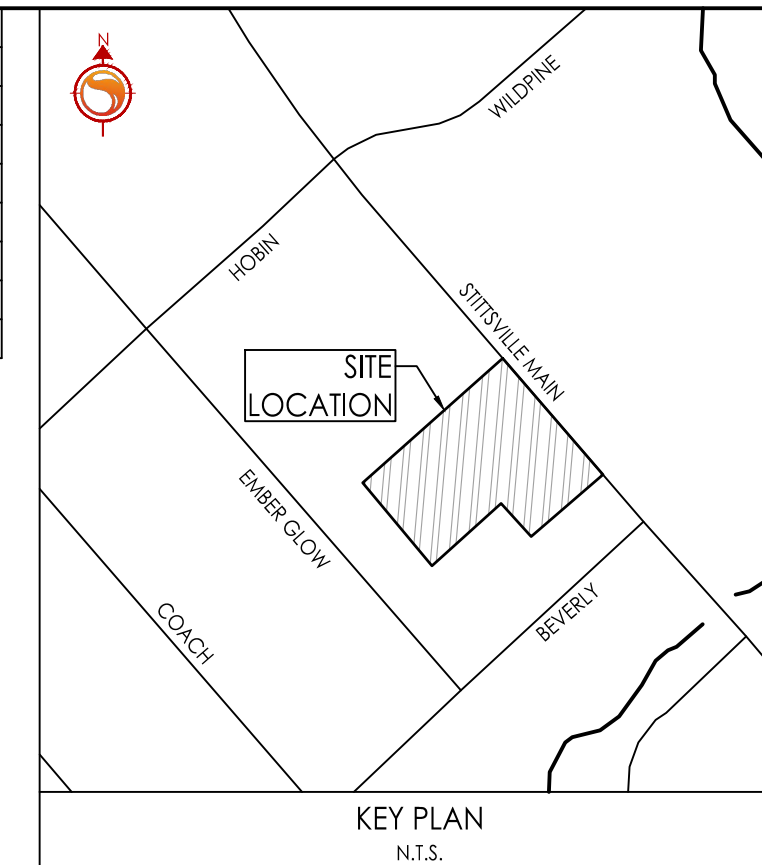
At Hamlin

ALLISON HAMLIN
MANAGER (A), DEVELOPMENT REVIEW WEST
PLANNING, REAL ESTATE & ECONOMIC DEVELOPMENT
DEPARTMENT, CITY OF OTTAWA

APPROVED
By Allison Hamlin at 12:50 pm, Apr 28, 2023

CROSSING	STM INV	STM OBV	SAN INV	SAN OBV	WTR TOP	WTR BTM
▲	115.68(115.58)	116.28(116.38)			115.08	114.88
▲	115.65(115.55)	116.25(116.35)			115.05	114.85
▲	116.11	116.41	114.24	114.54		
▲	116.19	116.49	115.57	115.77	116.94	116.79
▲	116.39	116.59	115.92	116.07	117.24	117.09
▲	115.52(115.42)	116.12(116.22)			114.91	114.76

BRACKETS DENOTE ADJUSTED VALUE WITH CONCRETE PIPE THICKNESS

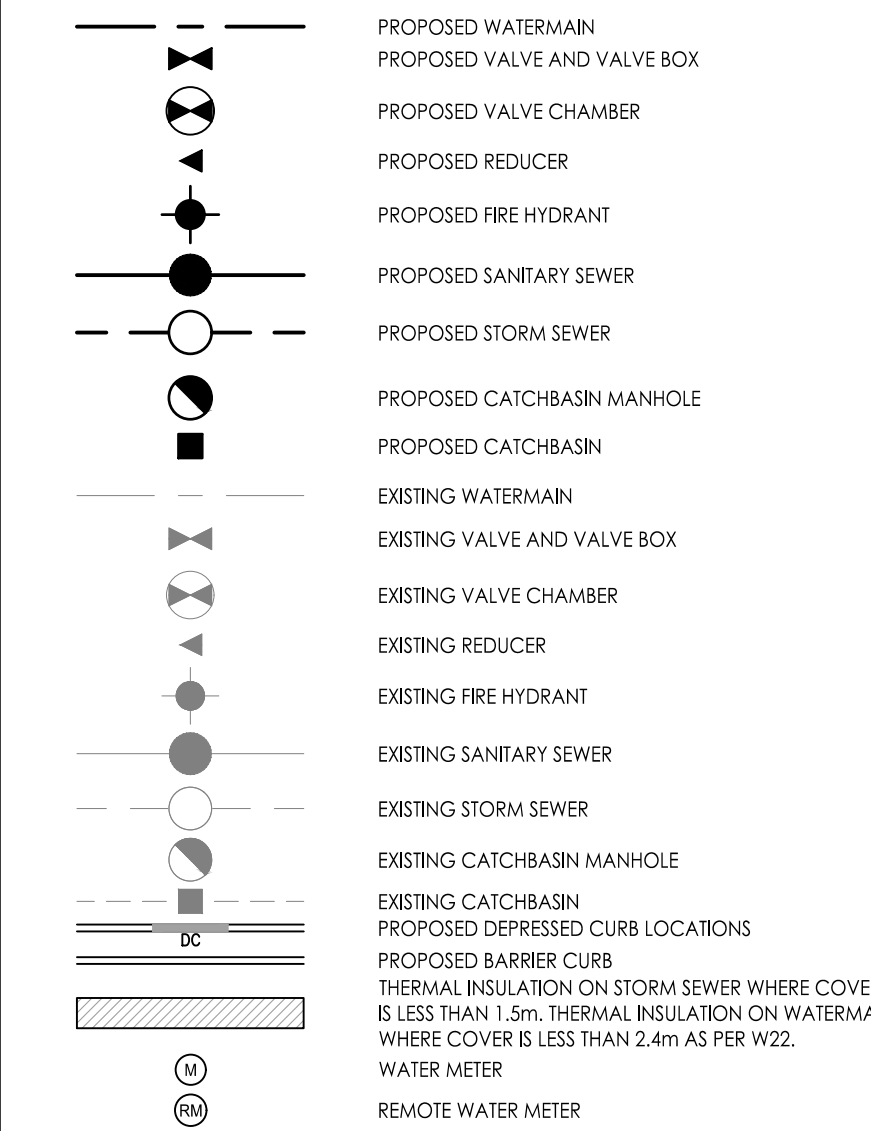


Stantec Consulting Ltd.
400 - 1331 Clyde Avenue
Ottawa ON
Tel. 613.722.4420
www.stantec.com

Copyright Reserved

The Contractor shall verify and be responsible for all dimensions. DO NOT scale the drawing - any errors or omissions shall be reported to Stantec without delay.
The Copyrights to all designs and drawings are the property of Stantec. Reproduction or use for any purpose other than that authorized by Stantec is forbidden.

Legend



Notes

- FINAL METER AND REMOTE METER LOCATIONS TO BE CONFIRMED BY MECHANICAL CONSULTANT.
- THE LOCATION OF UTILITIES IS APPROXIMATE ONLY AND THE EXACT LOCATION SHOULD BE DETERMINED BY CONSULTING THE MUNICIPAL AUTHORITIES AND UTILITY COMPANIES CONCERNED. THE CONTRACTOR SHALL PROVE THE LOCATION OF UTILITIES AND SHALL BE RESPONSIBLE FOR THEIR PROTECTION AND THE IMPLEMENTATION OF ANY NECESSARY PROCEDURES CALLED FOR IN THE APPROPRIATE STANDARD AND REGULATIONS.
- INTERNAL PLUMBING AND SLUMP PUMPS TO BE DESIGNED BY THE MECHANICAL CONSULTANT.
- NEW PRIVATE HYDRANTS INSTALLED ON SITE ARE TO BE INSTALLED TO FACE STITTVILLE MAIN STREET.

STATION	FINISHED GRADE	TOP W/M	ITEM
0+000	118.12	116.10z	200mmØ TVS CONNECTION TO EX. 406mmØ D.I.
0+000.9	118.12	115.720	45° VERTICAL BEND DEFLECT W/M AS PER W25
0+001.9	118.12	115.080	45° VERTICAL BEND DEFLECT W/M AS PER W25
0+002.9	118.13	115.080	45° VERTICAL BEND DEFLECT W/M AS PER W25
0+003.9	118.13	115.730	45° VERTICAL BEND DEFLECT W/M AS PER W25
0+013.9	118.14	115.740	11 1/2" HORIZONTAL BEND
0+019	118.26	115.860	11 1/2" HORIZONTAL BEND
0+022.2	118.31	115.910	W3 WATER CHAMBER
0+023.8	118.34	115.940	200mmØ X 200mmØ TEE
0+026.5	118.40	116.000	200mmØ X 150mmØ HYDRANT TEE
0+032.5	118.47	116.070	200mmØ X 150mmØ REDUCER
0+035.8	118.53	116.130	45° VERTICAL BEND DEFLECT W/M AS PER W25.2
0+036.8	118.54	117.020	45° VERTICAL BEND DEFLECT W/M AS PER W25.2
0+039.8	118.54	117.020	45° VERTICAL BEND DEFLECT W/M AS PER W25.2
0+040.8	118.54	116.140	45° VERTICAL BEND DEFLECT W/M AS PER W25.2
0+042.5	118.56	116.160	150mmØ VALVE AND VALVE BOX
0+044	118.56	116.160	45° HORIZONTAL BEND
0+046	118.64	116.240	45° HORIZONTAL BEND
0+046.6	118.66	116.260	150mm CAP AND THRUST BLOCK

STATION	FINISHED GRADE	TOP W/M	ITEM
0+000	118.40	116.000	200mmØ X 150mmØ HYDRANT TEE
0+005.8	118.46	116.060	150mmØ VALVE AND BOX
0+006.8	118.47	116.070	45° BEND
0+008.1	118.49	116.090	45° BEND
0+009.9	118.49	116.090	HYDRANT

DRAIN TYPE	TRIBUTARY AREA ID	# OF DRAINS	100YR HEAD (m)	100YR RELEASE RATE (L/s)	100YR PONDING VOLUME (m³)
WATTS ACCFLOW (25% OPEN)	R101A	5	0.15	6.24	68
WATTS ACCFLOW (25% OPEN)	R101B	1	0.13	0.89	3
WATTS ACCFLOW (25% OPEN)	R101C	1	0.13	0.89	3
WATTS ACCFLOW (25% OPEN)	R101D	1	0.04	0.48	0.01

CATCHBASIN / MANHOLE ID	TRIBUTARY AREA ID	ICD TYPE	2YR HEAD (m)	100YR HEAD (m)	2YR FLOW (L/s)	100YR FLOW (L/s)
MH 101A		95mm ORIFICE	0.72	1.38	10.09	20.19
CB 102B		83mm ORIFICE	0.77	1.47	12.27	17.14
CB 102C	L102C / EXT-2	150mm ORIFICE	0.10	0.82	6.30	26.89
CB 102D	L102D / EXT-1	90mm ORIFICE	0.21	1.24	6.50	18.27
CB 103A	L103A	VORTEX LMF 80	1.05	1.41	5.84	6.77
CB 103B	L103B	VORTEX LMF 80	1.52	1.63	7.04	7.28
CB 103C	L103C	150mm ORIFICE	0.0	0.81	0.0	7.86

*NOTE: HEAD VALUES DO NOT INCLUDE DOWNSTREAM TAIL WATER EFFECTS.

Revision	By	Appd.	YY.MM.DD	
5	REVISED AS PER CITY COMMENTS	MJS	NC	23.03.23
4	REVISED AS PER CITY COMMENTS	MJS	NC	22.12.22
3	REVISED AS PER CITY COMMENTS	MJS	NC	22.10.22
2	REVISED AS PER CITY COMMENTS	MJS	NC	22.08.03
1	ISSUED FOR GEOTECH REVIEW	MJS	DT	22.07.11
0	ISSUED FOR SPA	MJS	DT	22.03.28

Revision

File Name:	MJS	PM	MJS	22.02.14
160401727 DB.dwg	Dwn.	Chkd.	Dgn.	YY.MM.DD

Permit-Seal

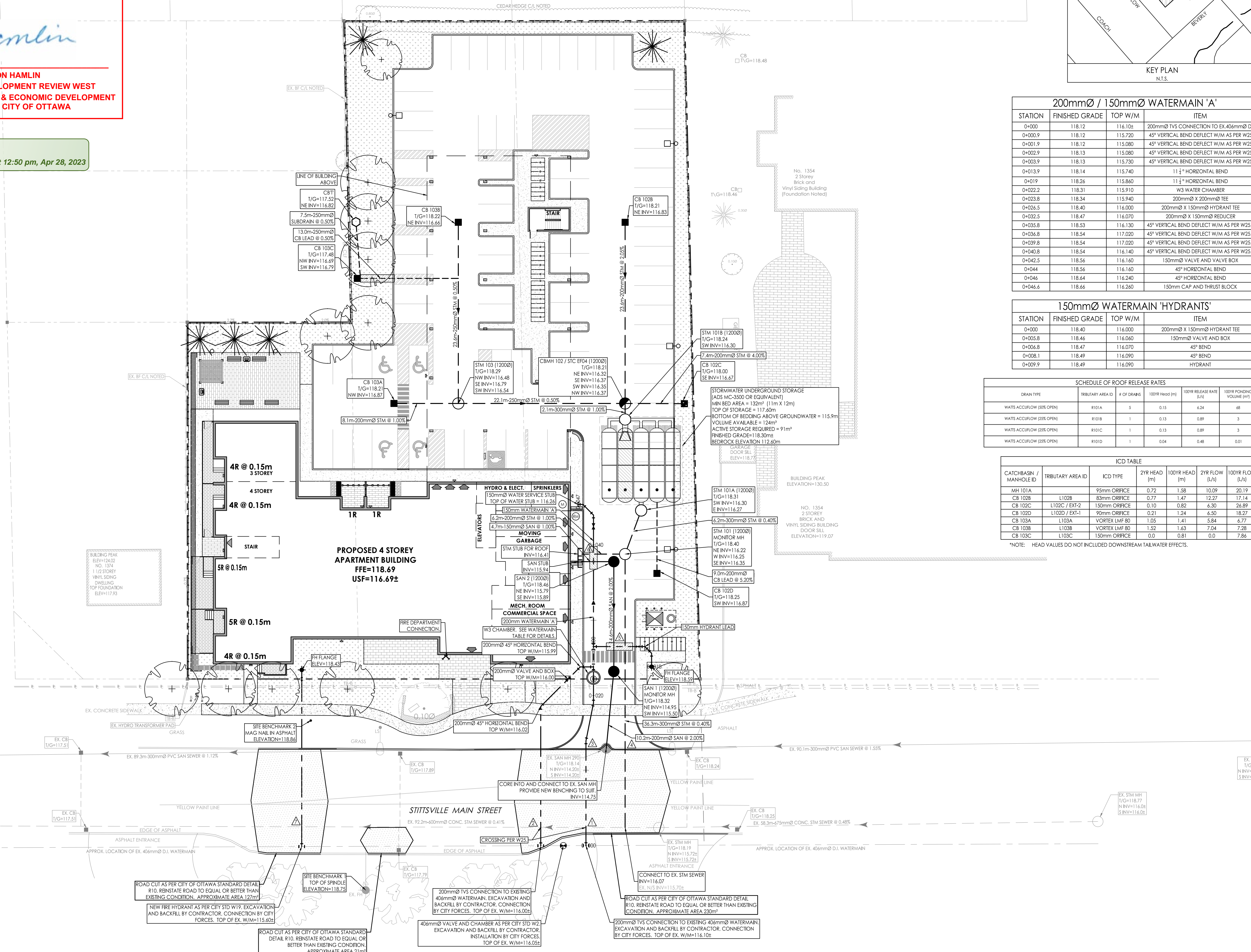
Client/Project
BAYVIEW STITTVILLE INC.

THE LANDING ON MAIN
1364-1370 STITTVILLE MAIN STREET
STITTVILLE, ON, CANADA

Title
SITE SERVICING PLAN

Project No.	Scale	0	2.5	7.5	12.5m
160401727	1:250				
Drawing No.	Sheet	Revision			
SSP-1	3 of 8	5			

Project No. 160401727
Drawing No. SSP-1
Scale 1:250
Sheet 3 of 8
Revision 5
PLN # 18744



V:\Projects\160401727\Design\Drawings\160401727 DB.dwg
2023/03/23 1:50 PM by: S.Hamlin

ORIGINAL SHEET - ARCH D

D07-12-22-0059