

LEGEND

- 0.24 ha: AREA (hectares)
- A-01: AREA ID
- 0.65: RUN-OFF COEFFICIENT
- Blue line: PROPOSED STORM DRAINAGE AREA BOUNDARY
- Circle with arrow: PROPOSED STORM MANHOLE / SEWER AND FLOW DIRECTION
- CB1: PROPOSED ROAD CATCHBASIN
- RY1: REAR YARD CATCH BASIN
- CBMH1: CATCH BASIN MANHOLE
- Arrow: MAJOR SYSTEM FLOW ROUTE
- Light blue area: MAX STATIC PONDING LIMITS
- Dashed line: 100-YR PONDING LIMITS

STORM MANHOLE TABLE

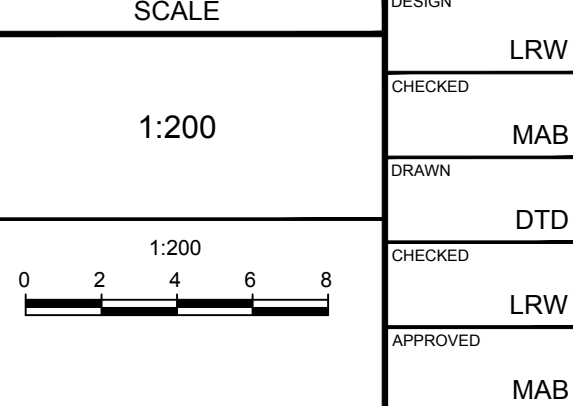
MANHOLE ID	SIZE (mm)	TIG ELEV (m)	INVERT (m)	ICD	100YR DESIGN FLOW (L/s)	100YR HEAD (m)
CBMH1	1200mmØ	92.15	NW=90.65 SW=90.28 NE=90.28	TEMPEST LMF (VORTEX 69)	5.9	2.08

PONDING

PONDING ID	STRUCTURE	100 YEAR PONDING ELEVATION	100 YEAR PONDING DEPTH (m)	100 YEAR +20% PONDING ELEVATION	100 YEAR +20% PONDING DEPTH (m)	MAX STATIC PONDING ELEVATION	MAX STATIC PONDING DEPTH (m)
P1	CBMH1	92.36	0.21	92.40	0.25	92.40	0.25
P2	CB1	92.36	0.16	92.40	0.20	92.42	0.22
P3	L2	92.36	0.11	92.40	0.15	92.48	0.23

NOTE:
THE POSITION OF ALL POLE LINES, CONDUITS, WATERMANS, SEWERS AND OTHER UNDERGROUND AND OVERGROUND UTILITIES AND STRUCTURES IS NOT NECESSARILY SHOWN ON THE CONTRACT DRAWINGS, AND WHERE SHOWN, THE ACCURACY OF THE POSITION OF SUCH UTILITIES AND STRUCTURES IS NOT GUARANTEED. BEFORE STARTING WORK, DETERMINE THE EXACT LOCATION OF ALL SUCH UTILITIES AND STRUCTURES AND ASSUME ALL LIABILITY FOR DAMAGE TO THEM.

No.	REVISION	DATE	BY
1.	CITY SUBMISSION	FEB 24/23	MAB



FOR REVIEW ONLY

DESIGN: LRW
 CHECKED: MAB
 DRAWN: DTD
 CHECKED: LRW
 APPROVED: MAB

L.R. WILSON
100160065
PROVINCE OF ONTARIO

M.A. BISSETT
2023.02.24
PROVINCE OF ONTARIO

NOVATECH
Engineers, Planners & Landscape Architects
Suite 200, 240 Michael Cowpland Drive
Ottawa, Ontario, Canada K2M 1P6
Telephone: (613) 254-9643
Facsimile: (613) 254-5867
Website: www.novatech-eng.com

CITY OF OTTAWA
255 MOUNTSHANNON DRIVE - BLOCK 2

STORM DRAINAGE AREA PLAN

PROJECT No: 112021-05
REV: REV # 1
DRAWING No: 112021-05-STM