

Notes:

LEGEND

- AVAILABLE SIGHT DISTANCE
- DECISION POINT

NOTES:
 HSU DRIVERS EYE HEIGHT AT APPROX. 70.1m
 BOTTOM OF SECOND FLOOR APPROX. 72.6m

04	Issued for Review	BB	2022-12-05
03	Issued for Review	AN	2022-09-12
02	Issued for Review	BB	2022-09-01
01	Issued for Review	BB	2022-05-20
REV:	DESCRIPTION:	BY:	DATE:
STATUS:			

CGH Transportation
 6 Plaza Court
 Ottawa, ON
 K2H 7W1
 (343) 999-9117

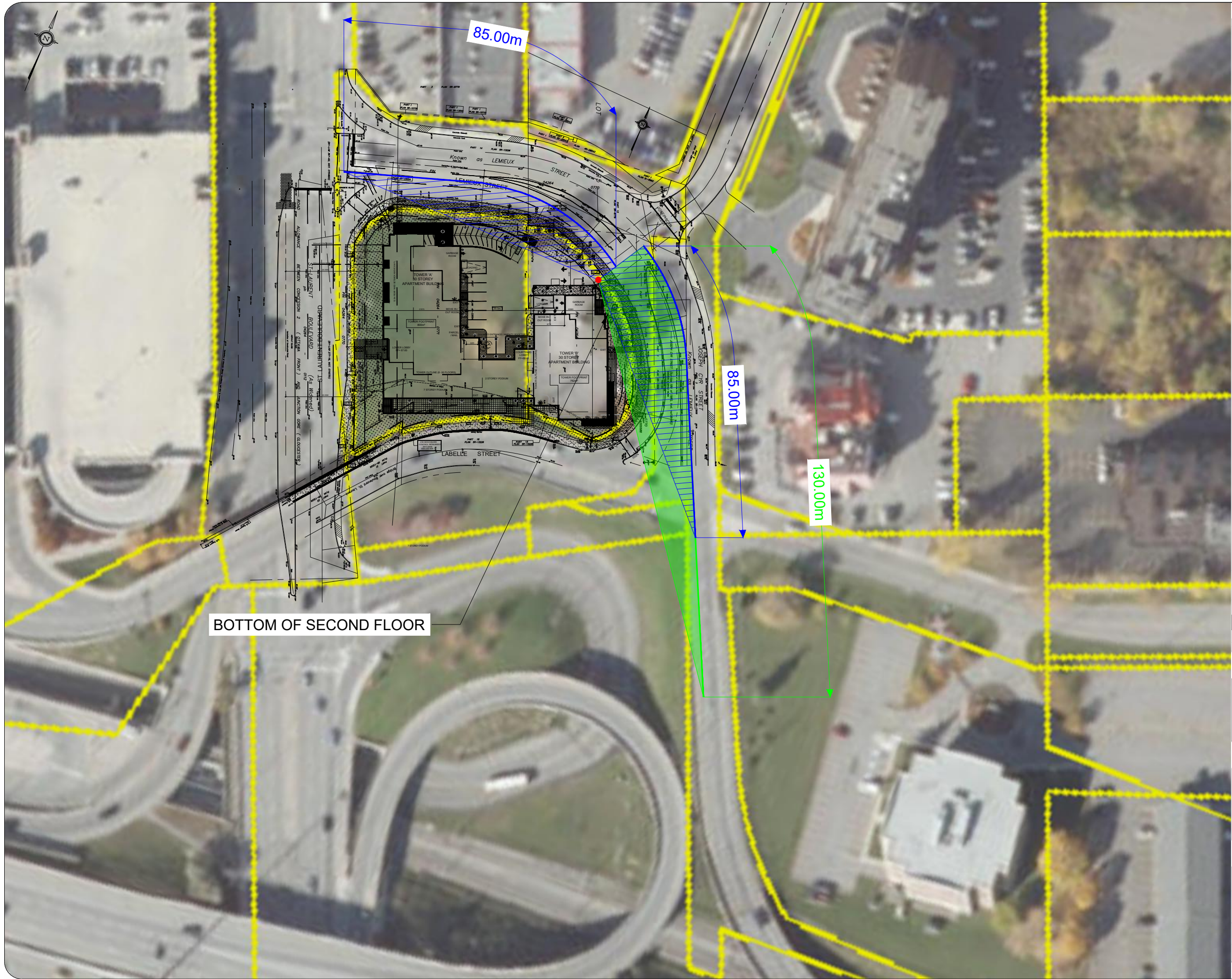
CLIENT: 1209 St. Laurent Partnership Inc.

ARCHITECT:

SITE:
 1209 St. Laurent Blvd.

TITLE:
 Horizontal Sightline Analysis
 Available Sight Distance

SCALE AT A3: NTS	DATE: 2022-12-05	DRAWN: BB	CHECKED: AL
PROJECT NO: 2022-026	DRAWING NO: 001	REVISION: 04	



Notes:

LEGEND

- ▨ STOPPING SIGHT DISTANCE
- ▨ DEPARTURE SIGHT DISTANCE
- DECISION POINT

DESIGN SPEED = 60km/hr
 STOPPING SIGHT DISTANCE = 85m
 DEPARTURE SIGHT DISTANCE = 130m

NOTES:
 HSU DRIVERS EYE HEIGHT AT APPROX. 70.1m

BOTTOM OF SECOND FLOOR APPROX. 72.6m

BOTTOM OF SECOND FLOOR

04	Issued for Review	BB	2022-12-05
03	Issued for Review	AN	2022-09-12
02	Issued for Review	BB	2022-09-01
01	Issued for Review	BB	2022-05-20
REV:	DESCRIPTION:	BY:	DATE:
STATUS:			

CGH Transportation
 6 Plaza Court
 Ottawa, ON
 K2H 7W1
 (343) 999-9117

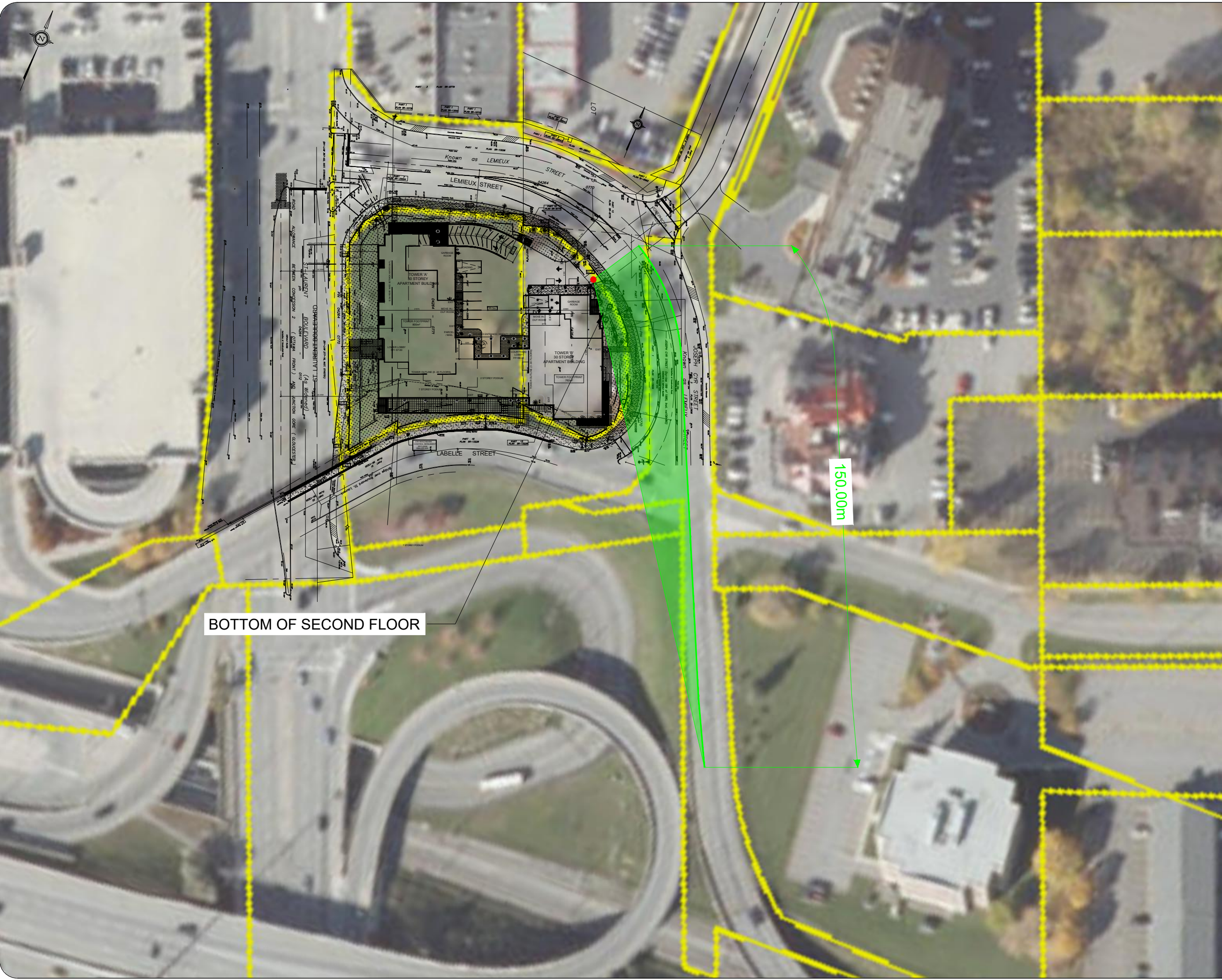
CLIENT: 1209 St. Laurent Partnership Inc.

ARCHITECT:

SITE: 1209 St. Laurent Blvd.

TITLE: Horizontal Sightline Analysis
 60km/hr Design Speed

SCALE AT A3:	DATE:	DRAWN:	CHECKED:
NTS	2022-12-05	BB	AL
PROJECT NO:	DRAWING NO:	REVISION:	
2022-026	002	04	



BOTTOM OF SECOND FLOOR

150.00m

Notes:

LEGEND

- █ DEPARTURE SIGHT DISTANCE
- DECISION POINT

DESIGN SPEED = 70km/hr
 DEPARTURE SIGHT DISTANCE = 150m

NOTES:
 HSU DRIVERS EYE HEIGHT AT APPROX. 70.1m
 BOTTOM OF SECOND FLOOR APPROX. 72.6m

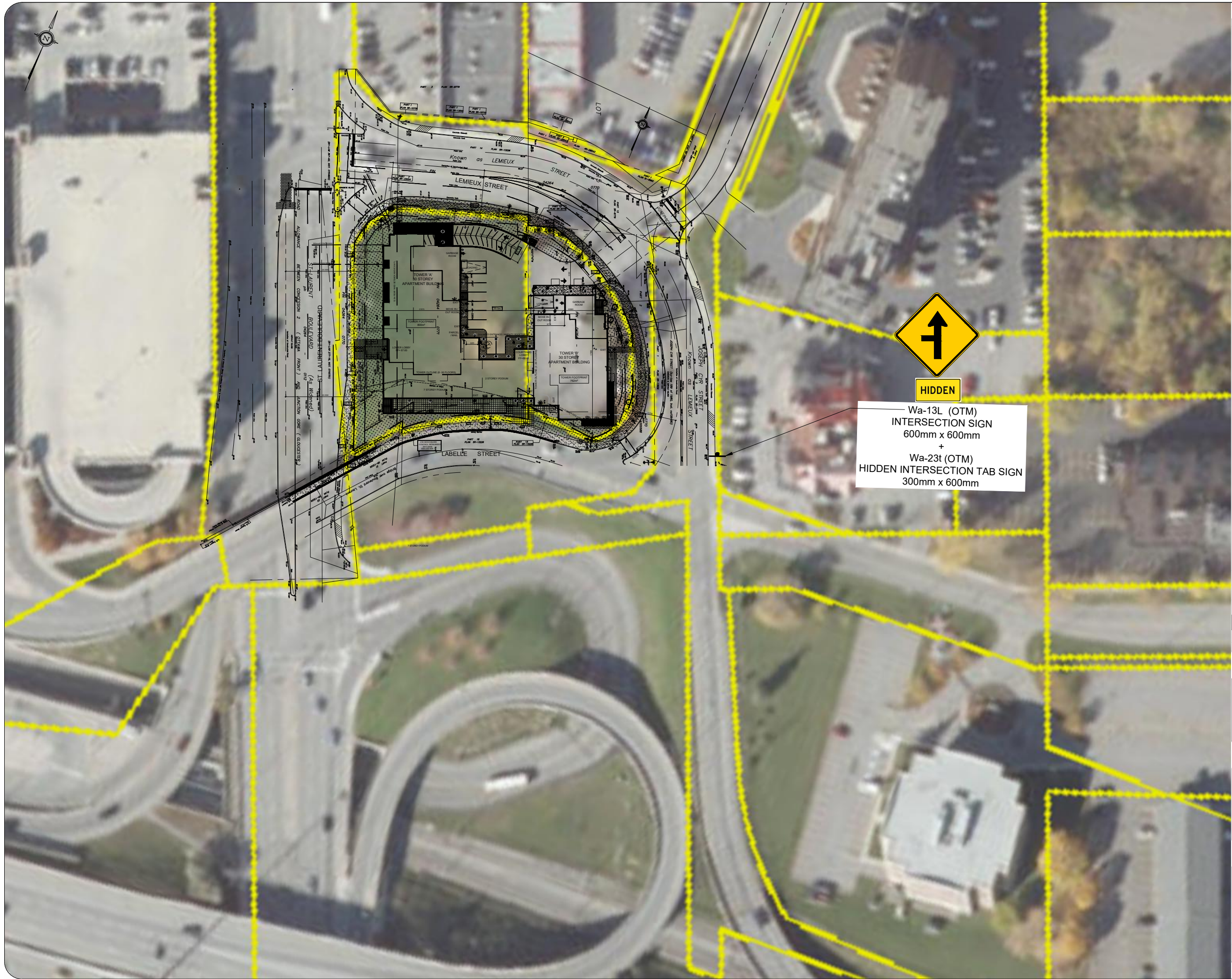
04	Issued for Review	BB	2022-12-05
03	Issued for Review	AN	2022-09-12
02	Issued for Review	BB	2022-09-01
01	Issued for Review	BB	2022-05-20
REV:	DESCRIPTION:	BY:	DATE:
STATUS:			

CGH Transportation
 6 Plaza Court
 Ottawa, ON
 K2H 7W1
 (343) 999-9117

CLIENT: 1209 St. Laurent Partnership Inc.
 ARCHITECT:

SITE: 1209 St. Laurent Blvd.
 TITLE: Horizontal Sightline Analysis
 70km/hr Design Speed

SCALE AT A3: NTS	DATE: 2022-12-05	DRAWN: BB	CHECKED: AL
PROJECT NO: 2022-026	DRAWING NO: 003	REVISION: 04	



Notes:

04	Issued for Review	BB	2022-12-05
03	Issued for Review	AN	2022-09-12
02	Issued for Review	BB	2022-09-01
01	Issued for Review	BB	2022-05-20
REV:	DESCRIPTION:	BY:	DATE:
STATUS:			

 **CGH Transportation**
 6 Plaza Court
 Ottawa, ON
 K2H 7W1
 (343) 999-9117

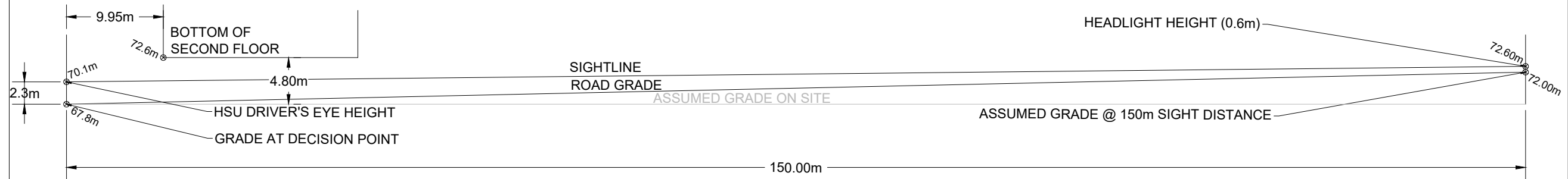
CLIENT: 1209 St. Laurent Partnership Inc.

ARCHITECT:

SITE:
 1209 St. Laurent Blvd.

TITLE: Hidden Intersection Warning Signage

SCALE AT A3: NTS	DATE: 2022-12-05	DRAWN: BB	CHECKED: AL
PROJECT NO: 2022-026	DRAWING NO: 004	REVISION: 04	



Notes:

04	Issued for Review	BB	2022-12-05
03	Issued for Review	AN	2022-09-12
02	Issued for Review	BB	2022-09-01
REV:	DESCRIPTION:	BY:	DATE:
STATUS:			



CGH Transportation
 6 Plaza Court
 Ottawa, ON
 K2H 7W1
 (343) 999-9117

CLIENT: 1209 St. Laurent Partnership Inc.

ARCHITECT:

SITE:
1209 St. Laurent Blvd.

TITLE: Vertical Sightline Analysis

SCALE AT A3:	DATE:	DRAWN:	CHECKED:
NTS	2022-12-05	BB	AL
PROJECT NO:	DRAWING NO:	REVISION:	
2022-026	005	04	