

OWNER:
 Vo and Van Holdings Corporation
 65 Loch Isle Road
 Nepean, Ontario
 K2H 8G7
 613-720-4090

LEGEND

FFL	FINISHED FLOOR ELEVATION
TOP	TOP OF FOUNDATION
BFL	BASEMENT FLOOR ELEVATION
USF	UNDERSIDE OF FOOTING
---	PROPERTY LINE
CB	CATCH-BASIN
MH	STORM MANHOLE
CB/MH	CATCH-BASIN/MANHOLE
MH	SANITARY MANHOLE
VC	VALVE CHAMBER
FH	FIRE HYDRANT
FDC	FIRE DEPARTMENT CONNECTION
CS	CURB STOP & STANDPOST
VB	VALVE & VALVE BOX
W	WATER METER
RM	REMOTE WATER METER
PR	PRESSURE REDUCING VALVE
SN	SANITARY SEWER
ST	STORM SEWER
WS	WATER SERVICE/WATERMAIN
OBV	OBJECT OF PIPE
SPL	SPRINGLINE OF PIPE
INV	INVERT OF PIPE
150mm	150mm BARRIER CURB
DC	DEPRESSED CURB
---	ROAD CUT REINSTATEMENT



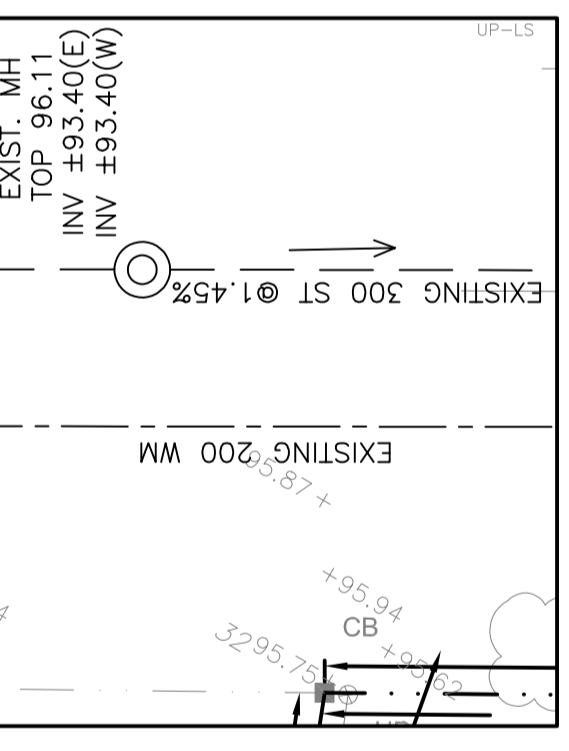
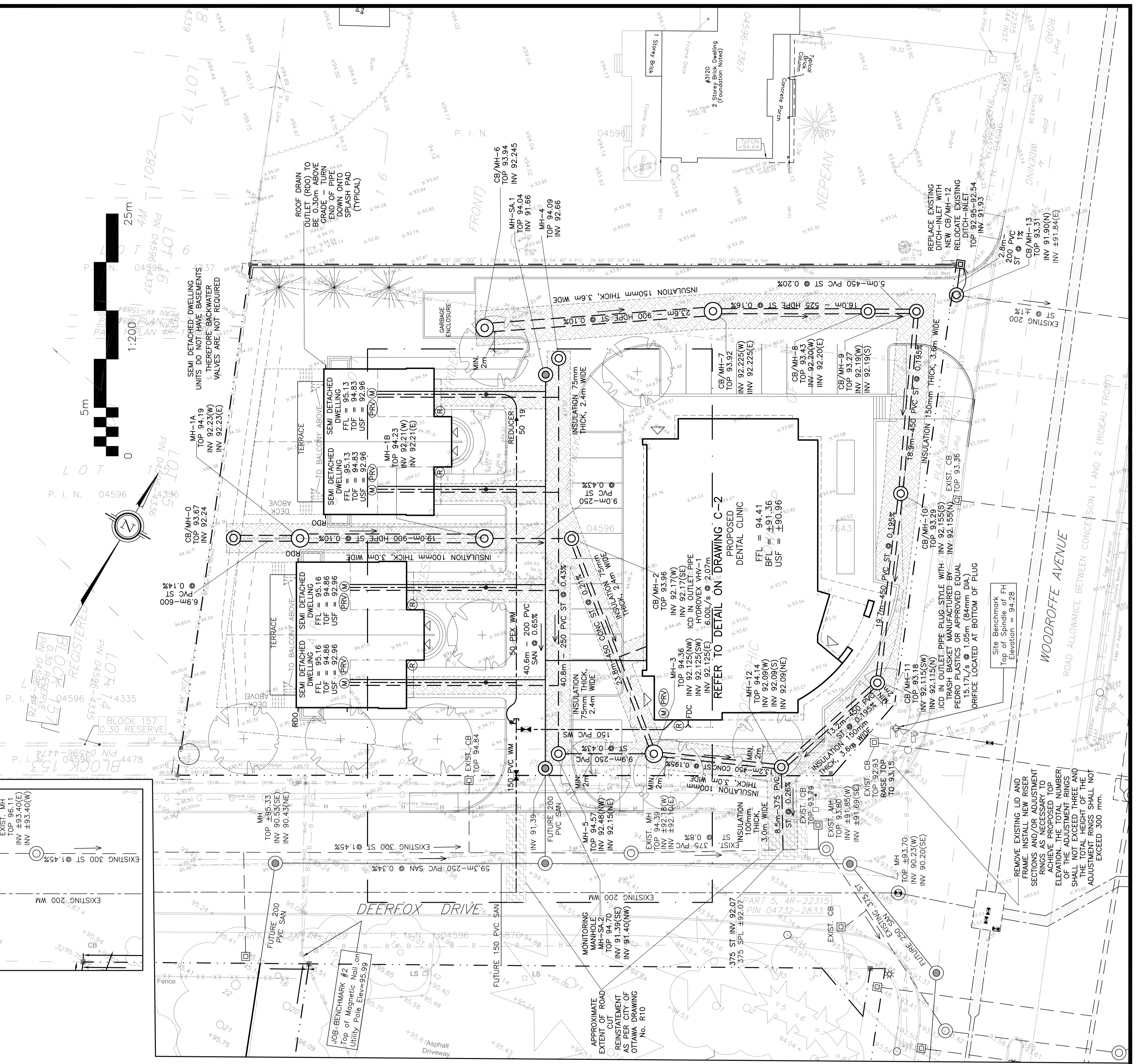
No.	DATE	REVISION
1	DEC 7-21	ISSUED FOR COORDINATION
2	FEB 17-22	ISSUED FOR COORDINATION
3	MAR 17-22	ISSUED FOR APPROVAL
4	JUL 4-22	ISSUED FOR CITY REVIEW
5	JUL 27-22	ISSUED FOR CITY REVIEW
6	SEP 8-22	REVISED ST & RELOCATED DITCH-INLET
7	OCT 31-22	RE-ISSUED TO CITY FOR APPROVAL
8	JAN 27-23	RE-ISSUED TO CITY FOR APPROVAL

D. B. GRAY ENGINEERING INC.
 Surveyor Management, Consulting & Design • Storm & Sanitary Sewers • Infrastructure
 700 Long Point Circle
 Ottawa, Ontario
 613-425-8044
 dgray@dbgrayengineering.com

PROPOSED
 1 STOREY DENTAL CLINIC &
 4 2-STOREY SEMI-DETACHED,
 3130 WOODROFFE AVENUE
 OTTAWA, ONTARIO

SITE SERVICING PLAN

Engineer's Seal
 License No. 17016502
 Date of Issue: JAN 27-23
 Drawing No. **C-1** of **7**
 NOT VALID UNLESS SIGNED & DATED



JOB-BENCHMARK #2
 Top of Magnetic Nail on
 Utility Pole Elev=95.99

APPROVED
 By Lily Xu at 12:54 pm, Apr 27, 2023

LILY XU, MCP, RPP
 MANAGER, DEVELOPMENT REVIEW SOUTH
 PLANNING, INFRASTRUCTURE & ECONOMIC
 DEVELOPMENT DEPARTMENT, CITY OF OTTAWA

REFER TO NOTES, DETAILS & SCHEDULES ON DRAWINGS C-6 & C-7