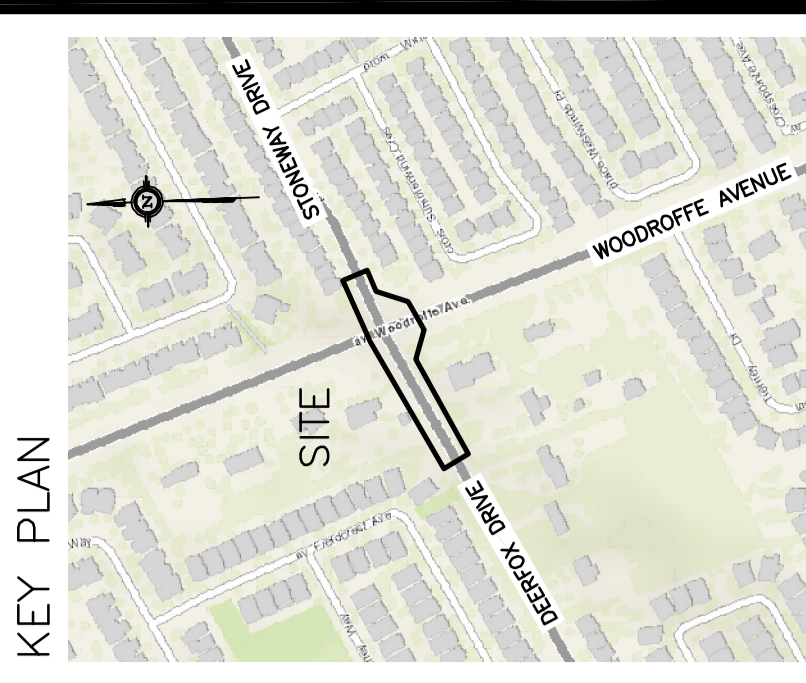
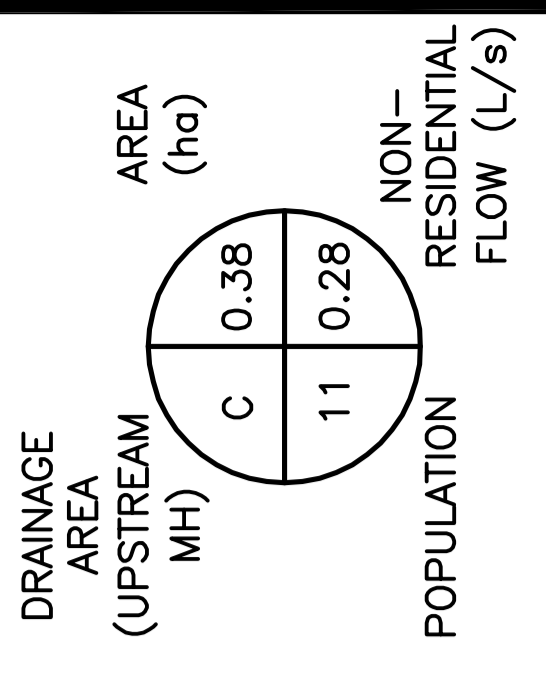


LEGEND



No.	DATE	REVISION
6	FEB 14-23	RE-ISSUED TO CITY FOR APPROVAL
5	JAN 27-23	RE-ISSUED TO CITY FOR APPROVAL
4	DEC 22-22	RE-ISSUED TO CITY FOR APPROVAL
3	OCT 31-22	RE-ISSUED TO CITY FOR APPROVAL
2	SEP 8-22	RE-ISSUED TO CITY FOR APPROVAL
1	MAR 17-22	ISSUED TO CITY FOR APPROVAL

**D. B. GRAY ENGINEERING INC.**  
 700 Long Point Circle  
 Ottawa, Ontario  
 613-425-8044  
 dgray@dbgrayengineering.com

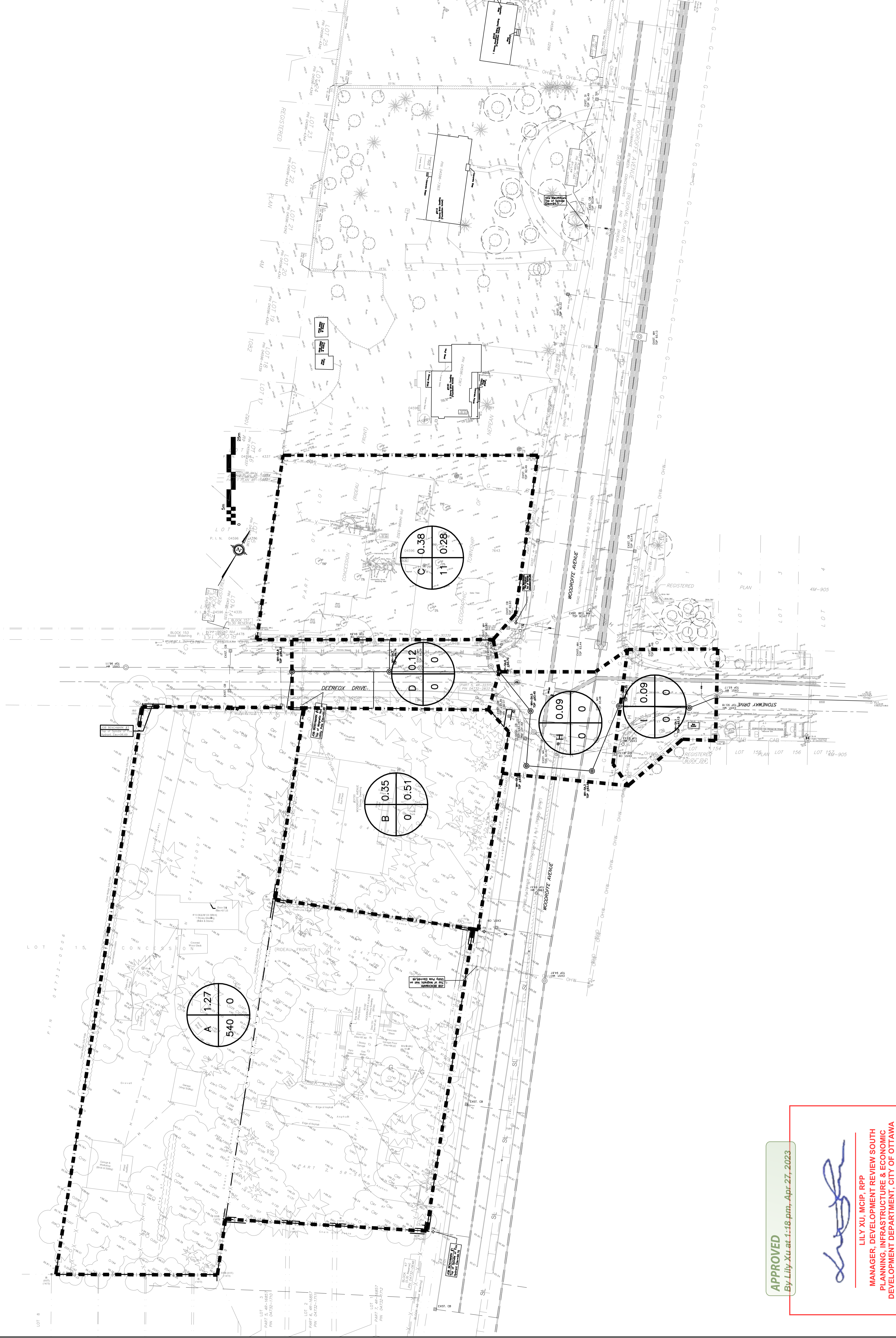
**MUNICIPAL SANITARY SEWER EXTENSION CROSSING WOODROFFE AVENUE FROM STONEYWAY DRIVE TO DEERFOX DRIVE OTTAWA, ONTARIO**

**SANITARY DRAINAGE PLAN**

Engineer's Seal: **LENSBROUKE PROFESSIONAL ENGINEERING**  
 License No. 17016502  
 Date: FEB 14-23  
 Not Valid Unless Signed & Dated

Drawn: D.B.G.  
 Horz. Scale: 1:500  
 Vert. Scale: 17:22  
 Date: MAR 17-22  
 Job No.: 20025

Drawing No. **C-9**  
 of **9**



**APPROVED**  
 By Lily Xu at 1:18 pm, Apr. 27, 2023

LILY XU, MCIP, RPP  
 MANAGER, DEVELOPMENT REVIEW SOUTH  
 PLANNING, INFRASTRUCTURE & ECONOMIC  
 DEVELOPMENT DEPARTMENT, CITY OF OTTAWA