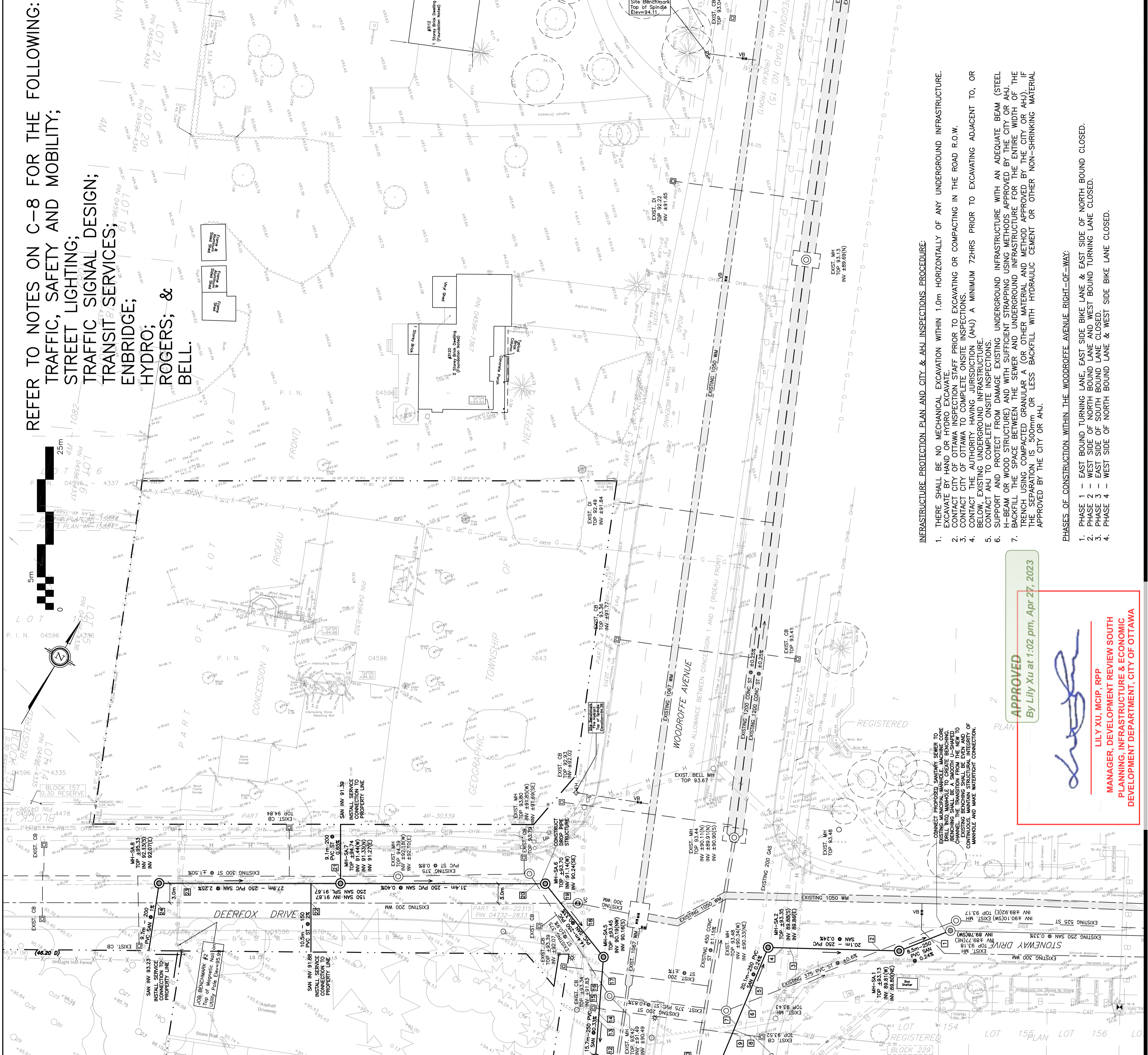
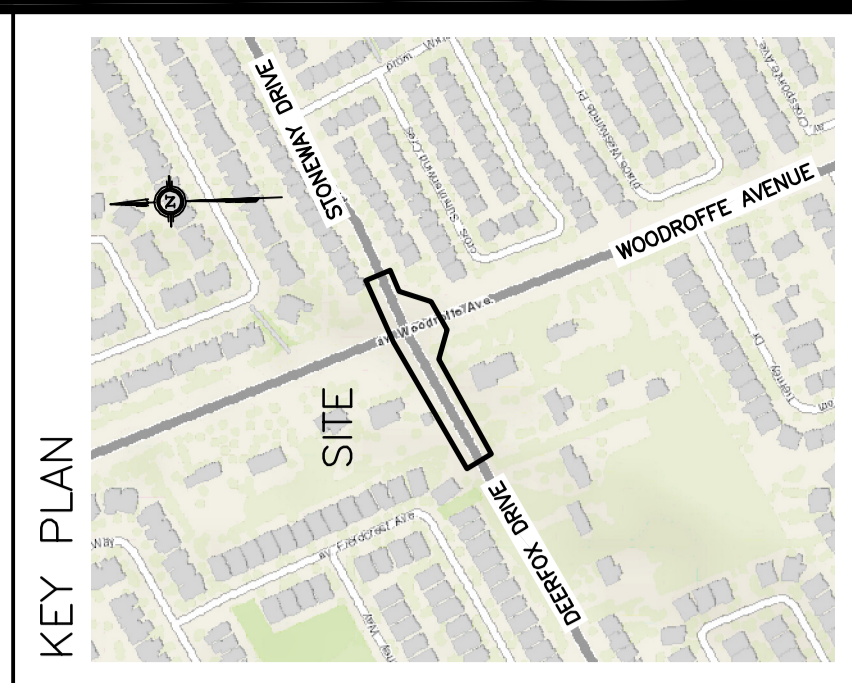


REFER TO NOTES ON C-8 FOR THE FOLLOWING:
 TRAFFIC, SAFETY AND MOBILITY;
 STREET LIGHTING;
 TRAFFIC SIGNAL DESIGN;
 TRANSIT SERVICES;
 ENBRIDGE; &
 HYDRO; &
 ROGERS; &
 BELL.



CB	CATCH-BASIN
MH	STORM MANHOLE
CB/MH	CATCH BASIN/MANHOLE
MH	SANITARY MANHOLE
VC	VALVE CHAMBER
SPL	SPRINGLINE OF PIPE
INV	INVERT OF PIPE
SAN	SANITARY SEWER
ST	STORM SEWER
WS/WV	WATER SERVICE/WATERMAIN
CS	CURB STOP & STANDPOST
VB	VALVE & VALVE BOX
FH	FIRE HYDRANT
—	EXISTING GRADE ELEVATION
—	OVER HEAD WIRE
H	HYDRO
B	BELL TELEPHONE
CAB	CABLE
G	GAS
T	TRAFFIC
---	PROPERTY LINE



No.	DATE	REVISION
9	MAR 3-23	RE-ISSUED TO CITY FOR APPROVAL
8	FEB 14-23	RE-ISSUED TO CITY FOR APPROVAL
7	JAN 27-23	RE-ISSUED TO CITY FOR APPROVAL
6	DEC 22-22	RE-ISSUED TO CITY FOR APPROVAL
5	OCT 31-22	RE-ISSUED TO CITY FOR APPROVAL
4	SEP 8-22	RE-ISSUED TO CITY FOR APPROVAL
3	MAR 17-22	RE-ISSUED TO CITY FOR APPROVAL
2	DEC 21-21	ISSUED TO CITY FOR APPROVAL
1	SEP 28-21	PRELIMINARY

D. B. GRAY ENGINEERING INC.
 Surveyor (Engineer - Consulting & Planning - Survey & Utility Services - Infrastructure)
 700 Long Point Circle
 Ottawa, Ontario
 613-425-8044
 dgray@dbgrayengineering.com

MUNICIPAL SANITARY SEWER EXTENSION CROSSING WOODROFFE AVENUE FROM STONEYWAY DRIVE TO DEERFOX DRIVE
 OTTAWA, ONTARIO

PLAN
 Drawing Title

Engineer's Seal
 Drawn: D.B.G.
 Hour: Scale: 1:3000
 Vert. Scale: 25:1
 Date: MAR 25-23
 Job No.: 20085
 Drawing No.: C-1 of 9
 NOT VALID UNLESS SIGNED & DATED

INFRASTRUCTURE PROTECTION PLAN AND CITY & AHJ INSPECTIONS PROCEDURE:
 1. THERE SHALL BE NO MECHANICAL EXCAVATION WITHIN 1.0m HORIZONTALLY OF ANY UNDERGROUND INFRASTRUCTURE. EXCAVATE BY HAND OR HYDRO EXCAVATE.
 2. CONTACT CITY OF OTTAWA INSPECTION STAFF PRIOR TO EXCAVATING OR COMPACTING IN THE ROAD R.O.W.
 3. CONTACT THE AUTHORITY HAVING JURISDICTION (AHJ) A MINIMUM 72HRS PRIOR TO EXCAVATING ADJACENT TO, OR BELOW, EXISTING UNDERGROUND INFRASTRUCTURE.
 4. CONTACT AHJ TO COMPLETE ON-SITE INSPECTIONS.
 5. CONTACT AHJ TO COMPLETE ON-SITE INSPECTIONS.
 6. CONTACT AHJ TO COMPLETE ON-SITE INSPECTIONS.
 7. UNDERGROUND INFRASTRUCTURE WITH AN ADEQUATE BEAM (STEEL I-BEAM OR WOOD STRUCTURE) AND EXISTENT STOPPING METHODS APPROVED BY THE CITY OR AHJ SHALL BE MAINTAINED IN PLACE. THE SPACING BETWEEN THE SEWER AND UNDERGROUND INFRASTRUCTURE FOR THE ENTIRE WIDTH OF THE TRENCH USING COMPACTED GRANULAR A (OR OTHER MATERIAL AND METHOD APPROVED BY THE CITY OR AHJ) IF THE SEPARATION IS 500mm OR LESS BACKFILL WITH HYDRAULIC CEMENT OR OTHER NON-SHRINKING MATERIAL APPROVED BY THE CITY OR AHJ.

PHASES OF CONSTRUCTION WITHIN THE WOODROFFE AVENUE RIGHT-OF-WAY:
 1. PHASE 1 - EAST BOUND TURNING LANE, EAST SIDE BIKE LANE & EAST SIDE OF NORTH BOUND CLOSED.
 2. PHASE 2 - WEST SIDE OF NORTH BOUND LANE AND WEST BOUND TURNING LANE CLOSED.
 3. PHASE 3 - EAST SIDE OF SOUTH BOUND LANE CLOSED.
 4. PHASE 4 - WEST SIDE OF NORTH BOUND LANE & WEST SIDE BIKE LANE CLOSED.

APPROVED
 By Lily Xu at 1:02 pm, Apr 27, 2023

Lily Xu
 LILY XU, MCIP, RPP
 MANAGER, DEVELOPMENT REVIEW & ECONOMIC DEVELOPMENT DEPARTMENT, CITY OF OTTAWA

REF	CROSSING INFORMATION	NOTES	CROSSING INFORMATION	NOTES
1	300 WM U/S #91.90 250 SAN TOP #90.04	±0.86m CLEARANCE	HYDRO #91.90 250 SAN TOP #90.38	±1.61m CLEARANCE
2	375 ST INV #91.17 250 SAN TOP #90.07	±0.10m CLEARANCE (±0.10m CLEARANCE ESTIMATED TO DETAIL ON DRAWING C-2)	STREET LIGHT POWER #92.19 250 SAN TOP #90.38	±1.82m CLEARANCE
3	HYDRO #91.90 250 SAN TOP #90.10	±1.43m CLEARANCE	200 ST INV #91.81 250 SAN TOP #90.40	±1.11m CLEARANCE
4	BELL #91.81 250 SAN TOP #90.10	±1.11m CLEARANCE	300 ST INV #91.67 250 SAN TOP #90.40	±0.77m CLEARANCE
5	BELL #91.81 250 SAN TOP #90.15	±1.11m CLEARANCE	300 ST INV #92.31 250 SAN TOP #91.54	±0.77m CLEARANCE
6	200 ST INV #91.74 250 SAN TOP #90.15	±0.16m CLEARANCE	200 WM U/S #92.18 150 SAN TOP #91.86	±0.30m CLEARANCE
7	STREET LIGHT POWER #92.24 250 SAN TOP #90.16	±0.14m CLEARANCE (±0.14m CLEARANCE ESTIMATED TO DETAIL ON DRAWING C-2)	BELL #94.04 250 SAN TOP #91.51	±1.02m CLEARANCE
8	HYDRO #91.95 250 SAN TOP #90.16	±1.58m CLEARANCE	200 WM U/S #92.62 250 SAN TOP #91.60	±1.02m CLEARANCE
9	200 ST INV #91.74 250 SAN TOP #90.16	±1.58m CLEARANCE		
10	450 ST U/S #91.23 250 SAN TOP #90.25	±0.98m CLEARANCE		
11	STREET LIGHT POWER #92.62 250 SAN TOP #90.28	±0.91m CLEARANCE		
12	406 WM U/S #91.20 250 SAN TOP #90.29	±0.91m CLEARANCE		