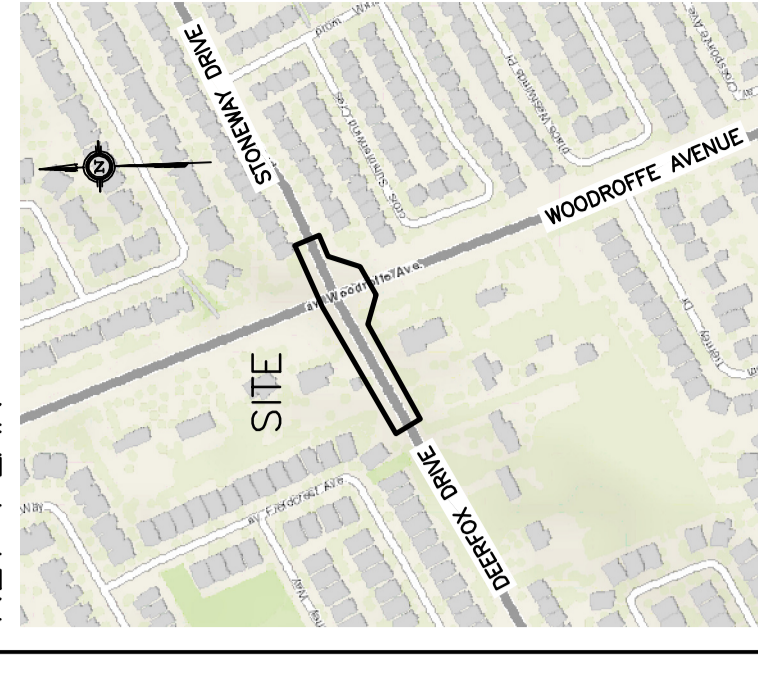


**PLAN AND PROFILE**  
 STA A+067.6 STA A+097.7

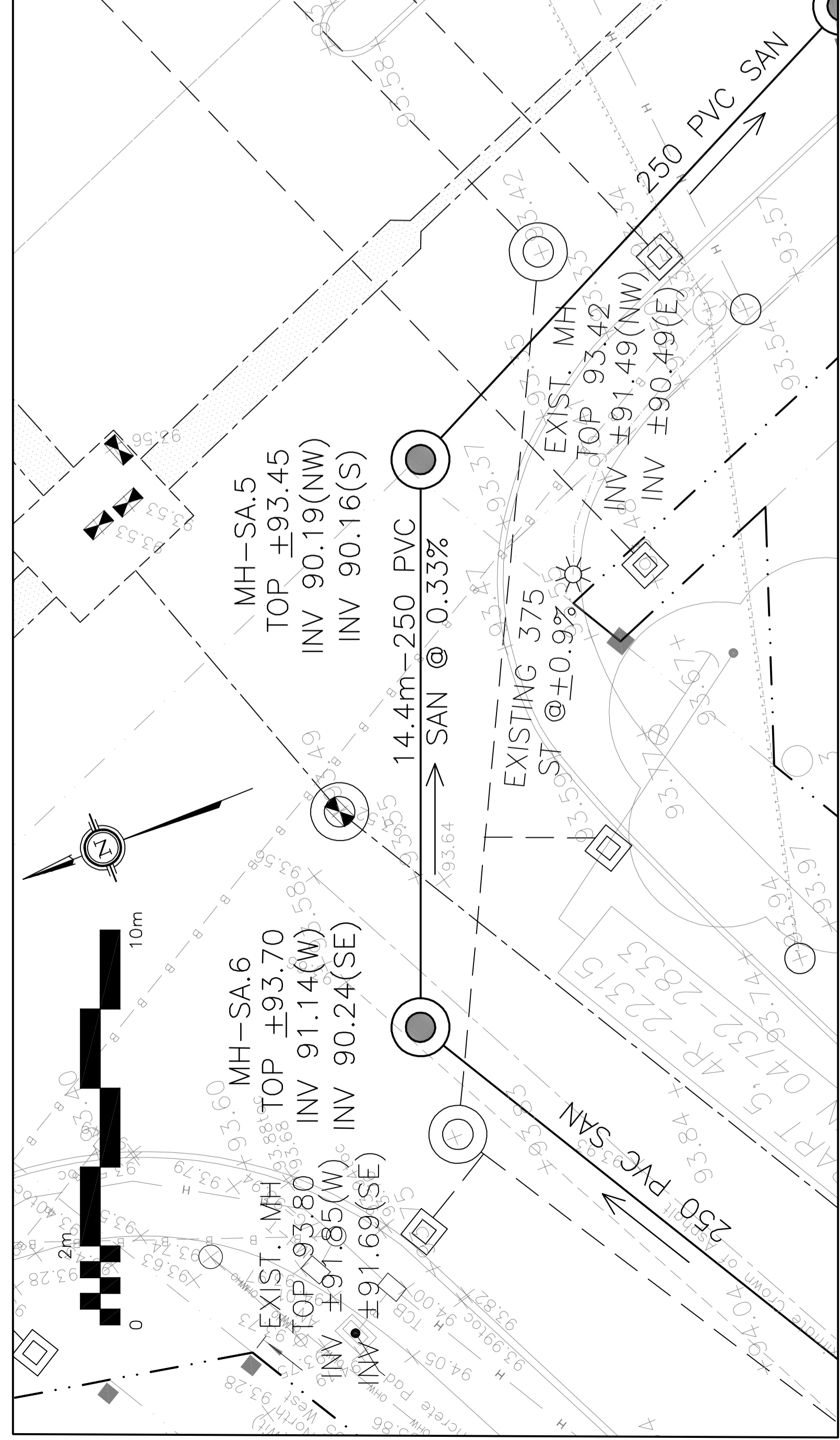
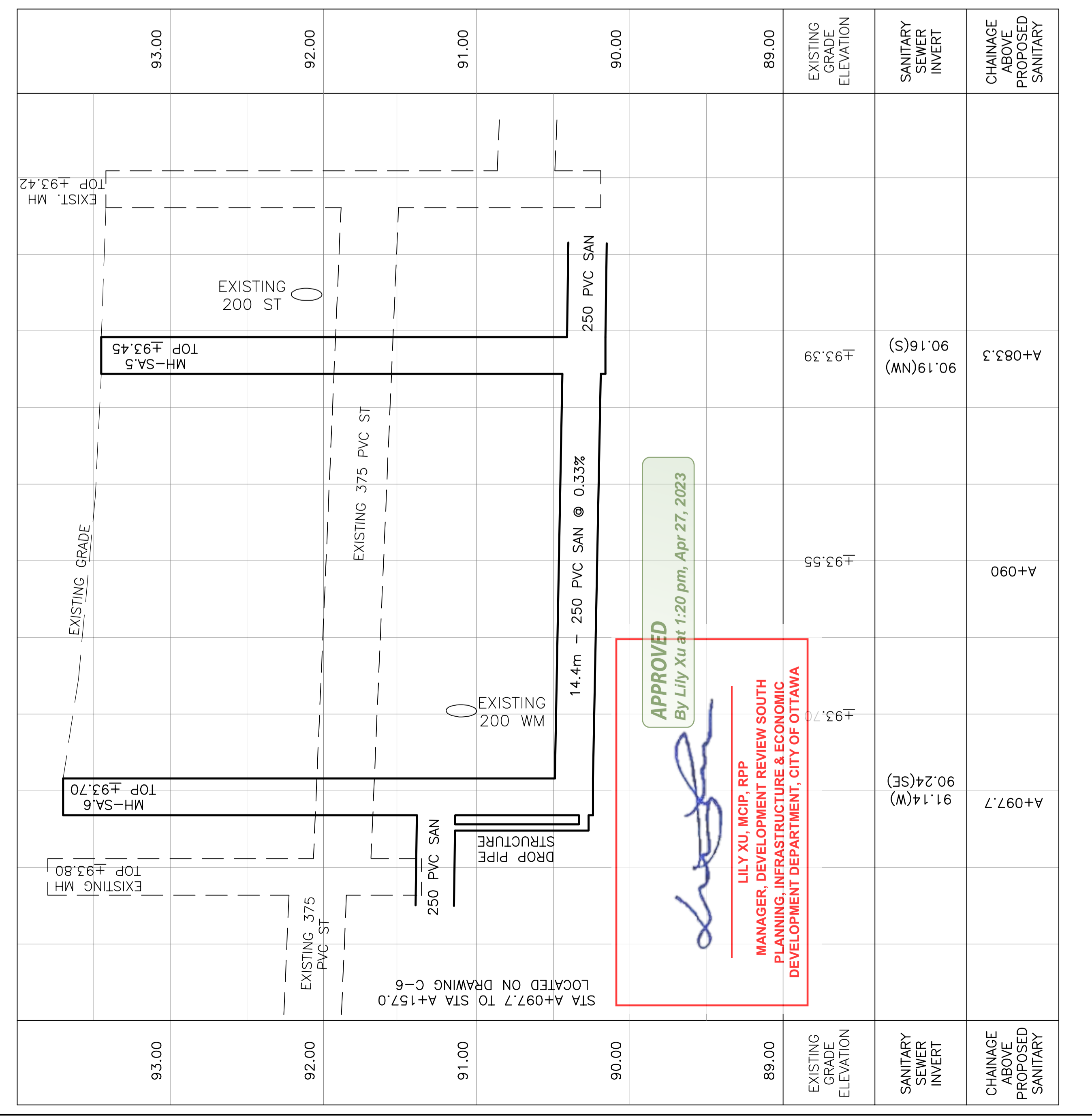
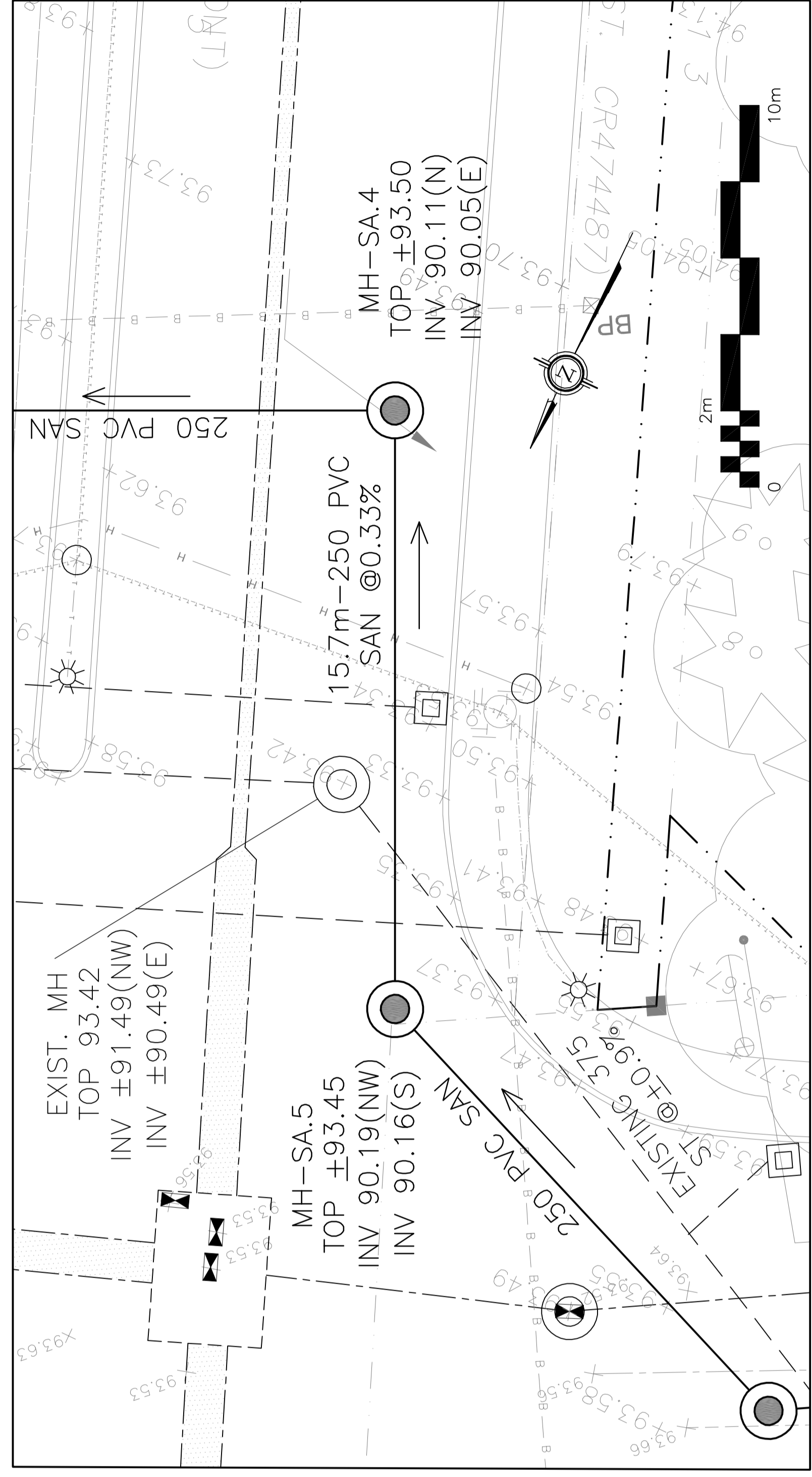
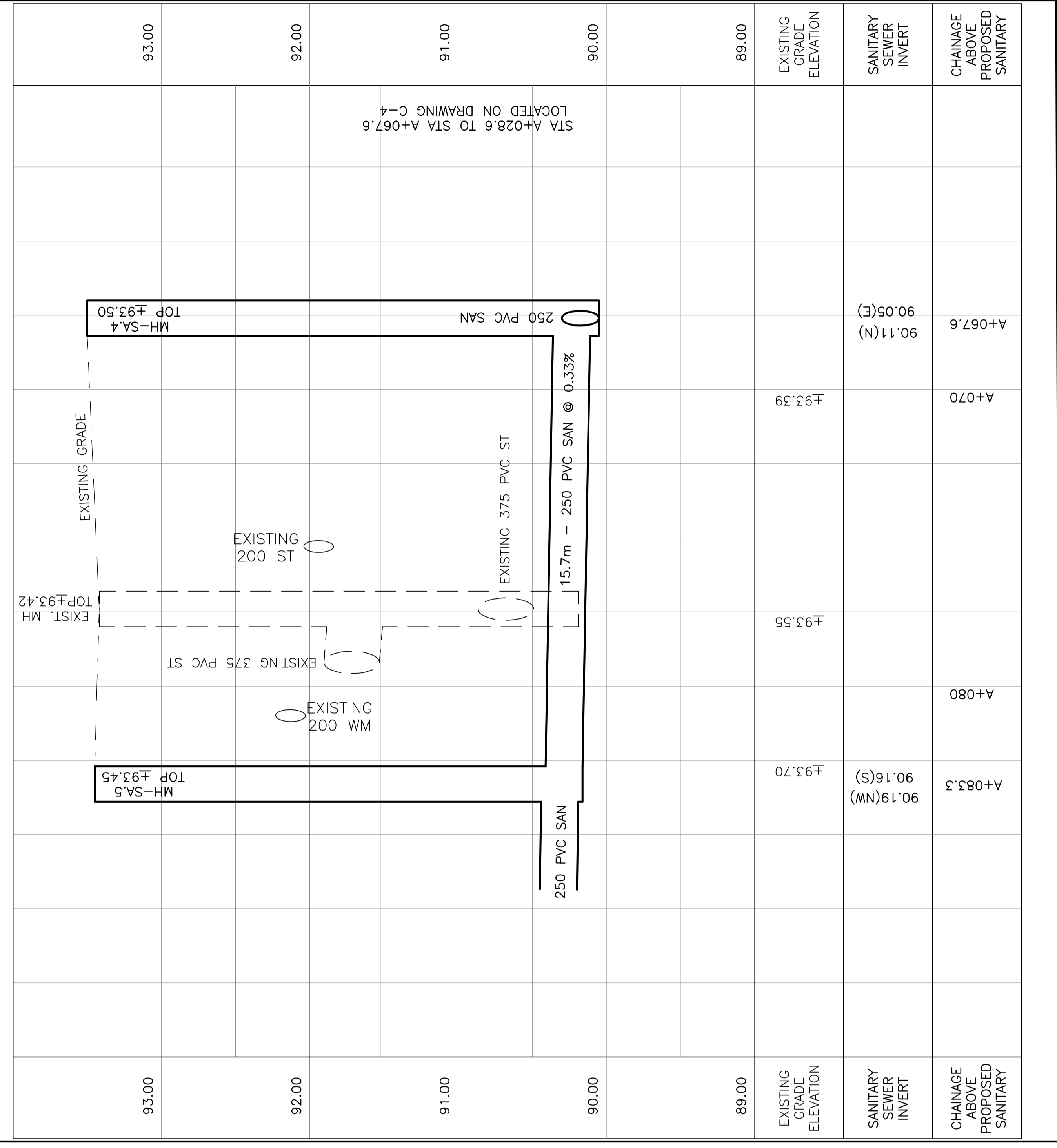
**MUNICIPAL SANITARY SEWER EXTENSION**  
 CROSSING WOODROFFE AVENUE FROM STONEYWAY DRIVE TO DEERFOY DRIVE  
 OTTAWA, ONTARIO

**D. B. GRAY ENGINEERING INC.**  
 700 Long Point Circle  
 Ottawa, Ontario  
 613-425-8044  
 dgray@dbgrayengineering.com

No.	DATE	REVISION
1	SEP 28-21	ISSUED TO CITY FOR APPROVAL
2	DEC 21-21	ISSUED TO CITY FOR APPROVAL
3	MAR 17-22	RE-ISSUED TO CITY FOR APPROVAL
4	SEP 8-22	RE-ISSUED TO CITY FOR APPROVAL
5	OCT 31-22	RE-ISSUED TO CITY FOR APPROVAL
6	DEC 22-22	RE-ISSUED TO CITY FOR APPROVAL
7	JAN 27-23	RE-ISSUED TO CITY FOR APPROVAL
8	FEB 14-23	RE-ISSUED TO CITY FOR APPROVAL
9	MAR 3-23	RE-ISSUED TO CITY FOR APPROVAL



CB	□	CATCH-BASIN
MH	○	STORM MANHOLE
CB/MH	○	CATCH BASIN/MANHOLE
MH	○	SANITARY MANHOLE
VC	⊙	VALVE CHAMBER
SPL	—○—	SPRINGLINE OF PIPE
INV	—○—	INVERT OF PIPE
SAN	—○—	SANITARY SEWER
ST	—○—	STORM SEWER
WS/W	—○—	WATER SERVICE/WATERMAIN
CS	—○—	CURB STOP & STANDPOST
VB	—○—	VALVE & VALVE BOX
FH	—○—	FIRE HYDRANT
—○—	—○—	EXISTING GRADE ELEVATION
—○—	—○—	OVER HEAD WIRE
H	—○—	HYDRO
B	—○—	BELL TELEPHONE
CAB	—○—	CABLE
G	—○—	GAS
T-T	—○—	TRAFFIC
—○—	—○—	PROPERTY LINE



**APPROVED**  
 By Lily Xu at 1:20 pm, Apr 27, 2023

**LILY XU, M.C.I.P., R.P.P.**  
 MANAGER, DEVELOPMENT REVIEW SOUTH  
 PLANNING, INFRASTRUCTURE & ECONOMIC  
 DEVELOPMENT DEPARTMENT, CITY OF OTTAWA

STA A+028.6 TO STA A+067.6 LOCATED ON DRAWING C-4  
 STA A+097.7 TO STA A+157.0 LOCATED ON DRAWING C-6