

KEY PLAN

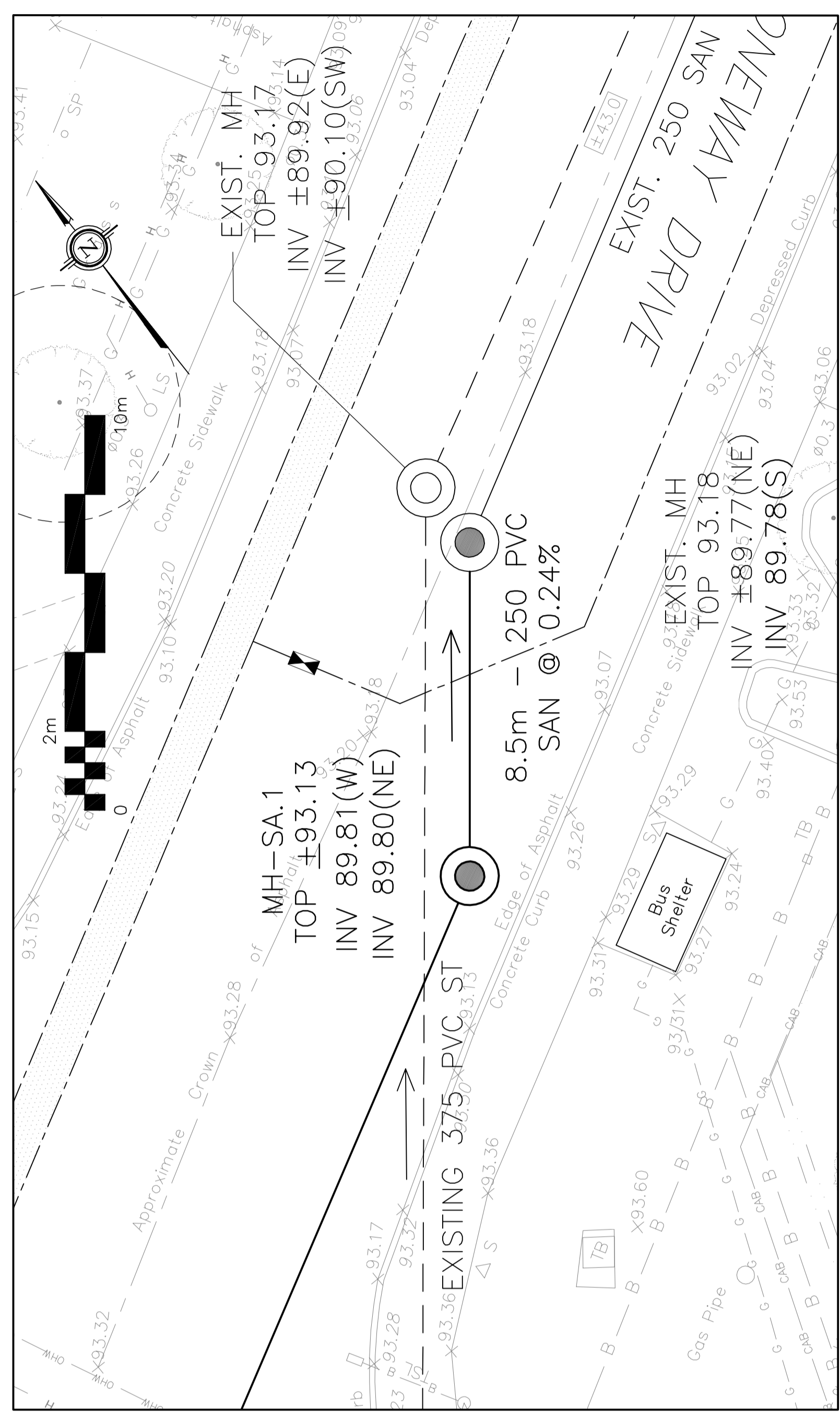
LEGEND:

- CB CATCH-BASIN
- MH STORM MANHOLE
- CB/MH CATCH BASIN/MANHOLE
- MH SANITARY MANHOLE
- VC VALVE CHAMBER
- SPL SPRINGLINE OF PIPE
- INV INVERT OF PIPE
- SAN SANITARY SEWER
- ST STORM SEWER
- WS/WV WATER SERVICE/WATERMAIN
- CS CURB STOP & STANDPOST
- VB VALVE & VALVE BOX
- FH FIRE HYDRANT
- EXISTING GRADE ELEVATION
- OHW OVER HEAD WIRE
- H HYDRO
- B BELL TELEPHONE
- CAB CABLE
- G GAS
- T-T TRAFFIC
- PROPERTY LINE

REVISIONS:

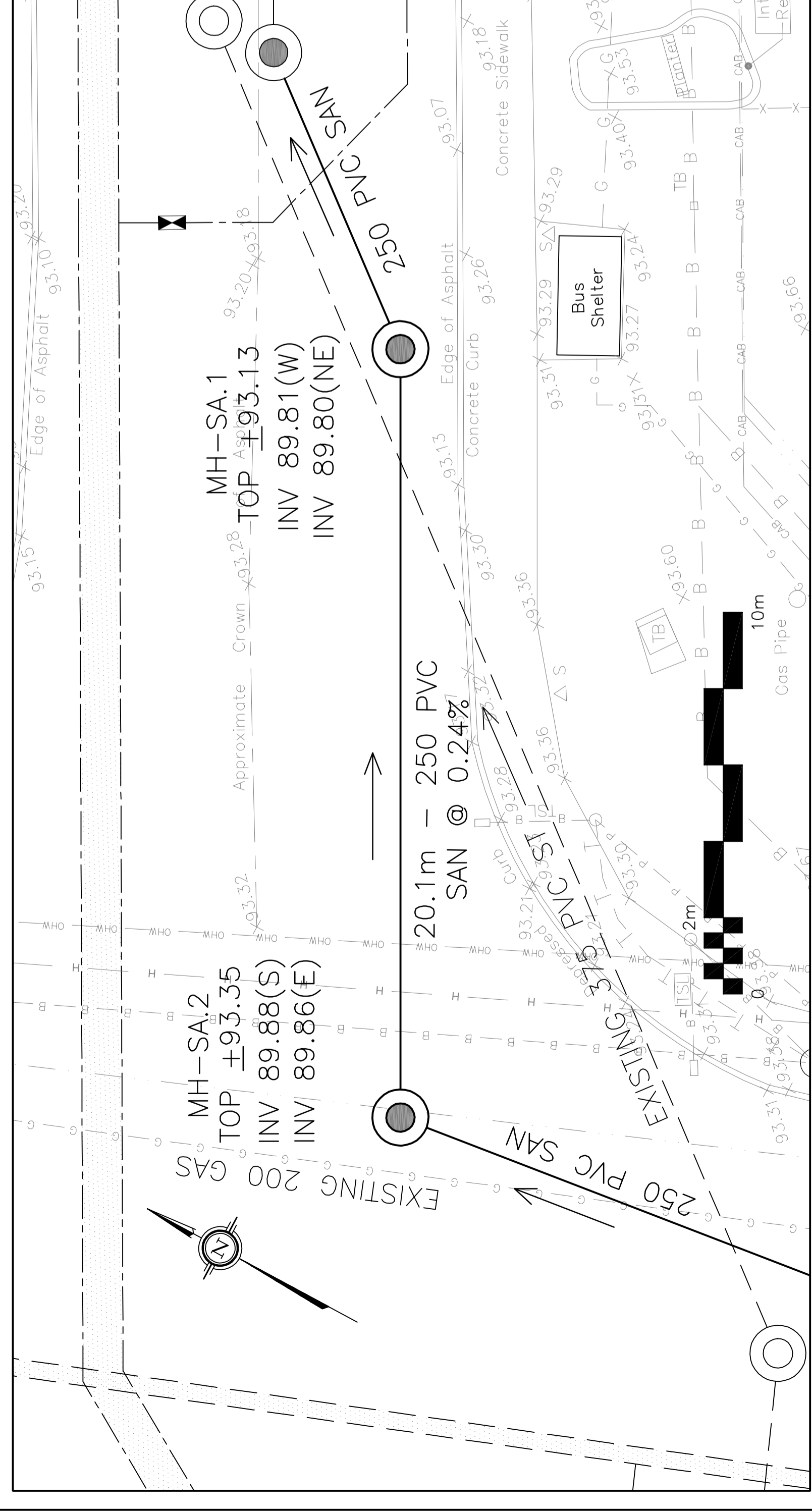
8	FEB 14-23	RE-ISSUED TO CITY FOR APPROVAL
7	JAN 27-23	RE-ISSUED TO CITY FOR APPROVAL
6	DEC 22-22	RE-ISSUED TO CITY FOR APPROVAL
5	OCT 31-22	RE-ISSUED TO CITY FOR APPROVAL
4	SEP 8-22	RE-ISSUED TO CITY FOR APPROVAL
3	MAR 17-22	RE-ISSUED TO CITY FOR APPROVAL
2	DEC 21-21	ISSUED TO CITY FOR APPROVAL
1	SEP 28-21	PRELIMINARY

D. B. GRAY ENGINEERING INC.
700 Long Point Circle
Ottawa, Ontario
613-425-8044
dgray@dbggrayengineering.com



Station	Existing Grade Elevation	Sanitary Sewer Invert	Chainage Above Proposed Sanitary
A+008.5	±93.13	89.81(W)	89.80(NE)
A+000.0	±93.18	89.78(SW)	89.77(NE)

Profile view showing elevations of 93.00, 92.00, 91.00, and 90.00. It includes labels for 'EXISTING GRADE', 'EXISTING 375 PVC ST', 'EXISTING 300 WM', and '250 PVC SAN @ 0.24%'.



Station	Existing Grade Elevation	Sanitary Sewer Invert	Chainage Above Proposed Sanitary
A+028.6	±93.35	89.88(S)	89.86(E)
A+010.0	±93.13	89.81(W)	89.80(NE)

Profile view showing elevations of 93.00, 92.00, 91.00, and 90.00. It includes labels for 'EXISTING GRADE', 'EXISTING 375 PVC ST', '250 PVC SAN @ 0.24%', and '20.1m - 250 PVC SAN @ 0.24%'.

APPROVED
By: Lily Xu at 1:18 pm, Apr 27, 2023

LILY XU, MCI, RPP
MANAGER, DEVELOPMENT REVIEW SOUTH
PLANNING, INFRASTRUCTURE & ECONOMIC
DEVELOPMENT DEPARTMENT, CITY OF OTTAWA

STA A+028.6 TO STA A+067.7
LOCATED ON DRAWING C-4