

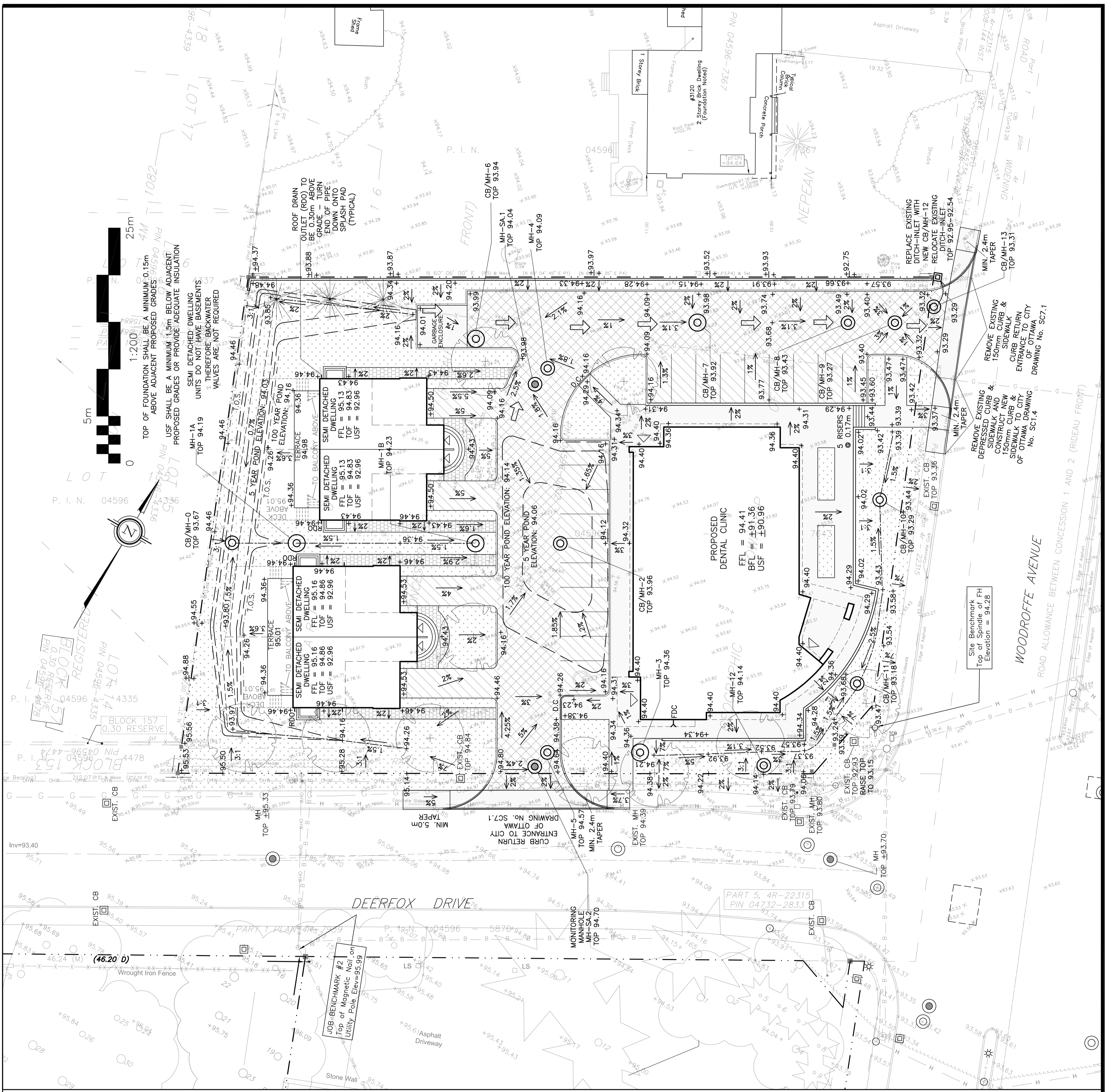
OWNER:
 Vo and Van Holdings Corporation
 65 Loch Isle Road
 Nepean, Ontario
 K2H 8G7
 613-720-4090

APPROVED
 By Lily Xu at 12:55 pm, Apr 27, 2023

Lily Xu

LILY XU, MCIIP, RPP
 MANAGER, DEVELOPMENT REVIEW SOUTH
 PLANNING, INFRASTRUCTURE & ECONOMIC
 DEVELOPMENT DEPARTMENT, CITY OF OTTAWA

REFER TO NOTES, DETAILS &
 SCHEDULES ON DRAWINGS C-6 & C-7



LEGEND

FFL	FINISHED FLOOR ELEVATION
TOP	TOP OF FOUNDATION
BFL	BASEMENT FLOOR ELEVATION
USF	UNDERSIDE OF FOOTING
---	PROPERTY LINE
CB	CATCH-BASIN
MH	STORM MANHOLE
CB/MH	CATCH-BASIN/MANHOLE
MH	SANITARY MANHOLE
VC	VALVE CHAMBER
PH	FIRE HYDRANT
FDC	FIRE DEPARTMENT CONNECTION
+	EXISTING GRADE ELEVATION
+99.99	PROPOSED GRADE ELEVATION
2%	PROPOSED SLOPE OF GRADE
↑	EMERGENCY OVERLAND FLOW
10.9	TOP OF SLOPE
86.5	BOTTOM OF SLOPE
---	CENTRELINE OF SWALE
---	150mm BARRIER CURB
---	DEPRESSED CURB
---	ROOF DRAIN
---	LIGHT-DUTY PAVEMENT
---	HEAVY-DUTY PAVEMENT
---	CONCRETE
---	LANDSCAPE
---	INTERLOCK



No.	DATE	REVISION
6	OCT 31-22	RE-ISSUED TO CITY FOR APPROVAL
5	SEP 8-22	RE-ISSUED TO CITY FOR APPROVAL
4	JUL 27-22	ISSUED FOR CITY REVIEW
3	MAR 17-22	ISSUED FOR APPROVAL
2	FEB 17-22	ISSUED FOR COORDINATION
1	DEC 7-21	ISSUED FOR COORDINATION

D. B. GRAY ENGINEERING INC.
 Surveyor/Engineer/Geomatics/Planning/Design & Safety/Service/Estimation
 700 Long Point Circle
 Ottawa, Ontario
 613-425-8044
 dgray@dbgrayengineering.com

PROPOSED
 1 STOREY DENTAL CLINIC &
 4 2-STOREY SEMI-DETACHED,
 3130 WOODROFFE AVENUE
 OTTAWA, ONTARIO

GRADING PLAN

Engineer's Seal
 L. XU
 MCIIP, RPP
 17016502
 OCT 31-22

NOT VALID UNLESS
 SIGNED & DATED

Drawing No. **C-3**
 of **7**

#17351

007-12-22-0055