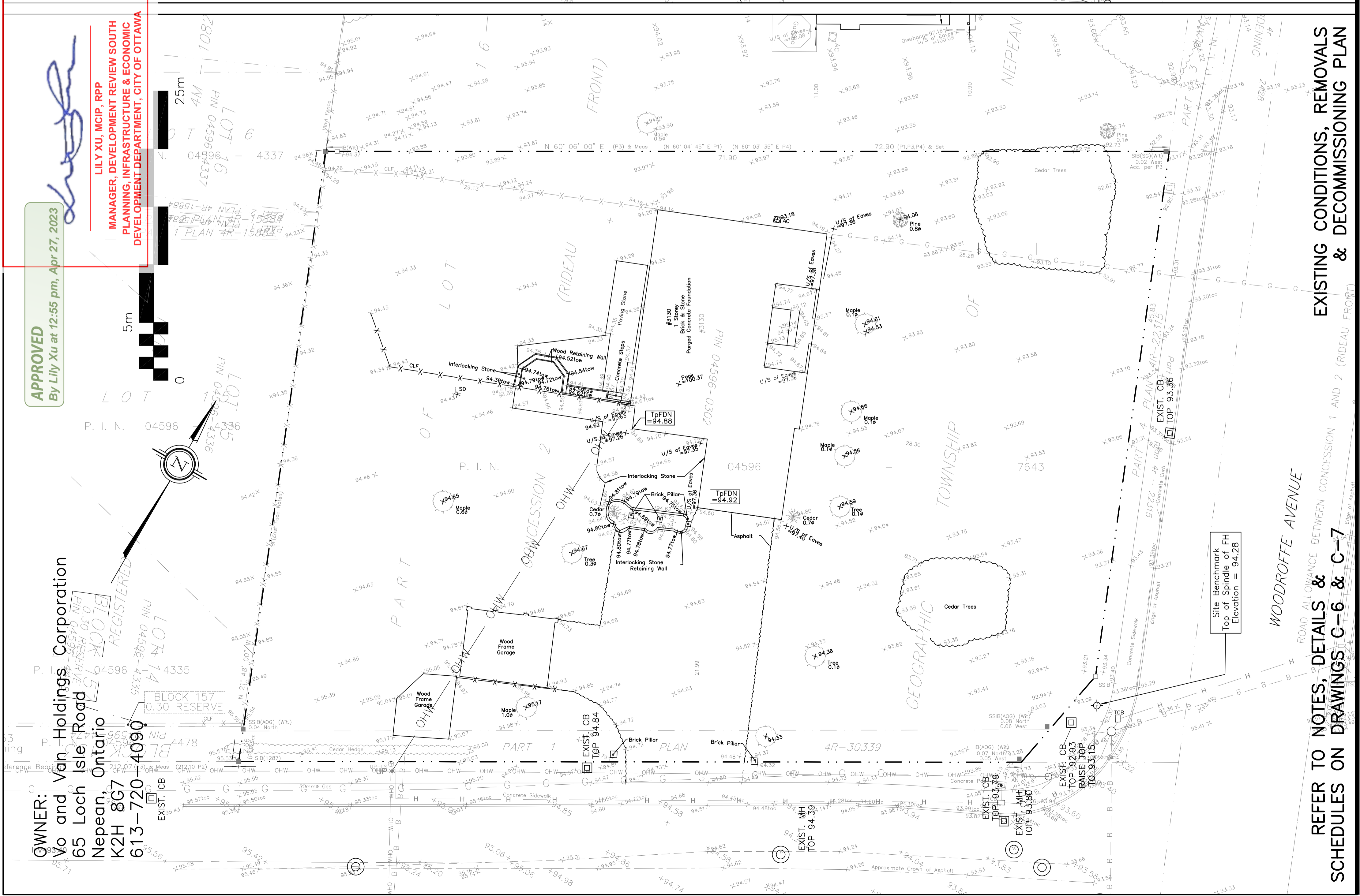


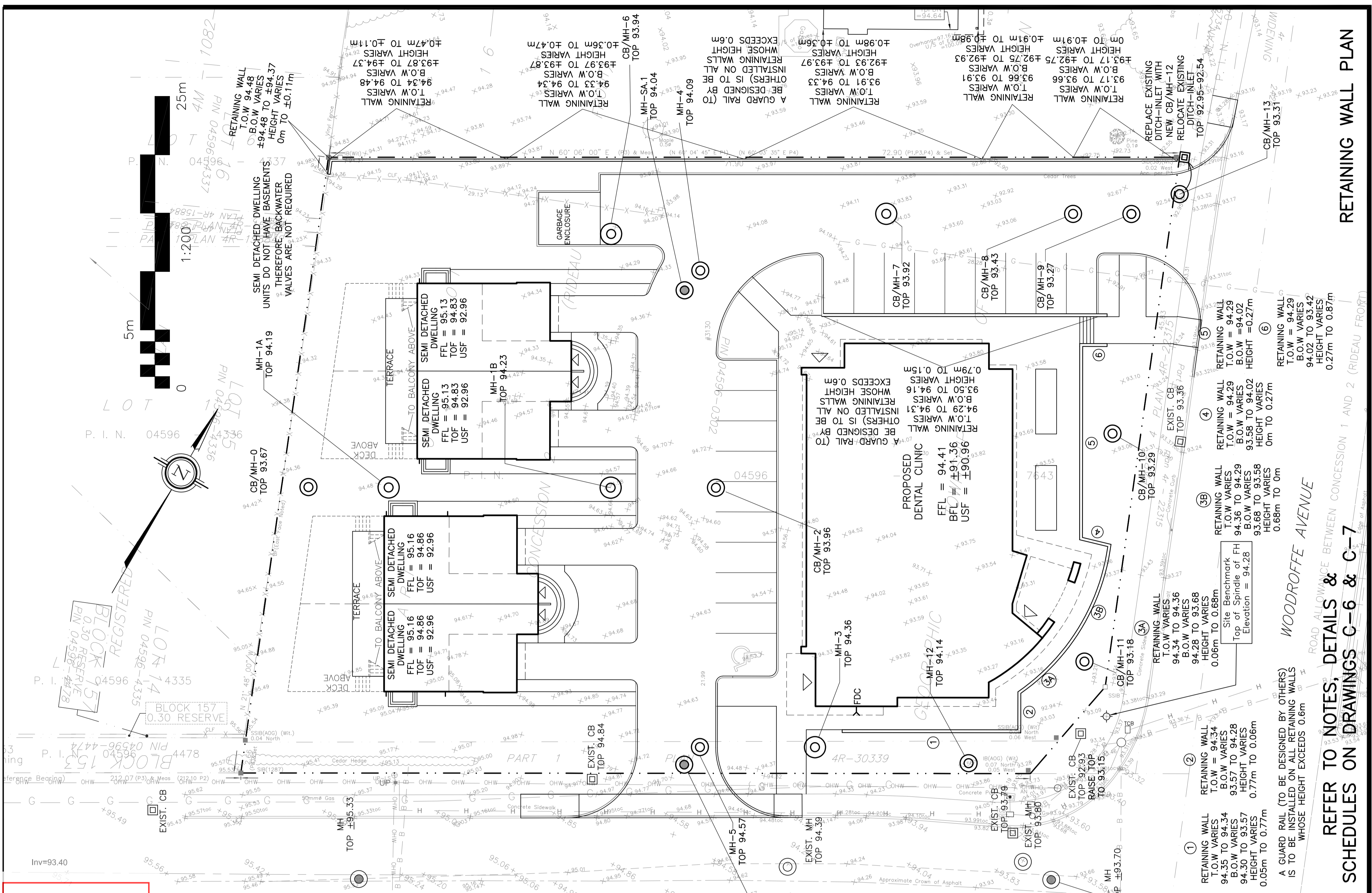
OWNER:
 Van Holdings Corporation
 65 Loch Isle Road
 Nepean, Ontario
 K2H 8G7
 613-720-4090

APPROVED
 By Lily Xu at 12:55 pm, Apr 27, 2023

LILY XU, M.C.I.P., R.P.P.
 MANAGER, DEVELOPMENT REVIEW SOUTH
 PLANNING, INFRASTRUCTURE & ECONOMIC
 DEVELOPMENT DEPARTMENT, CITY OF OTTAWA



REFER TO NOTES, DETAILS & REMOVALS
 EXISTING CONDITIONS, REMOVALS
 & DECOMMISSIONING PLAN
 SCHEDULES ON DRAWINGS C-6 & C-7



REFER TO NOTES, DETAILS & REMOVALS
 EXISTING CONDITIONS, REMOVALS
 & DECOMMISSIONING PLAN
 SCHEDULES ON DRAWINGS C-6 & C-7

LEGEND

FL	FINISHED FLOOR ELEVATION
TOP	TOP OF FOUNDATION
BFL	BASEMENT FLOOR ELEVATION
USF	UNDERSIDE OF FOOTING
---	PROPERTY LINE
CB	CATCH-BASIN
MH	STORM MANHOLE
CB/MH	CATCH-BASIN/MANHOLE
MH	SANITARY MANHOLE
VC	VALE CHAMBER
FH	FIRE HYDRANT
FDC	FIRE DEPARTMENT CONNECTION
Y	EXISTING GRADE ELEVATION
+99.99	PROPOSED GRADE ELEVATION
Z	EXISTING SLOPE OF GRADE
Z	PROPOSED SLOPE OF GRADE
↑	EMERGENCY OVERLAND FLOW
↑	TOP OF SLOPE
↓	BOTTOM OF SLOPE
---	CENTRELINE OF SWALE
---	150mm BARRIER CURB
---	DEPRESSED CURB
○	ROOF DRAIN
---	LIGHT-DUTY PAVEMENT
---	HEAVY-DUTY PAVEMENT
---	CONCRETE
---	LANDSCAPE
---	INTERLOCK



No.	DATE	REVISION
1	DEC 7-21	ISSUED FOR COORDINATION
2	FEB 17-22	ISSUED FOR APPROVAL
3	MAR 17-22	ISSUED FOR APPROVAL
4	SEP 8-22	RE-ISSUED TO CITY FOR APPROVAL
5	OCT 31-22	RE-ISSUED TO CITY FOR APPROVAL

D. B. GRAY ENGINEERING INC.
 700 Long Point Circle
 Ottawa, Ontario
 613-825-8044
 dgray@dbgrayengineering.com

PROPOSED
 1 STOREY DENTAL CLINIC &
 4 2-STOREY SEMI-DETACHED,
 3130 WOODROFFE AVENUE
 OTTAWA, ONTARIO

**EXISTING CONDITIONS &
 RETAINING WALL PLAN**

Drawn: D.B.G. 1:2000
 Date: DEC 7-21
 Vert. Scale: 1:7016502
 Job No.: 200253

Engineer Seal: [Seal]

Drawing No.: **C-4**
 of **7**

NOT VALID UNLESS
 SIGNED & DATED

007-12-22-0055

#17351