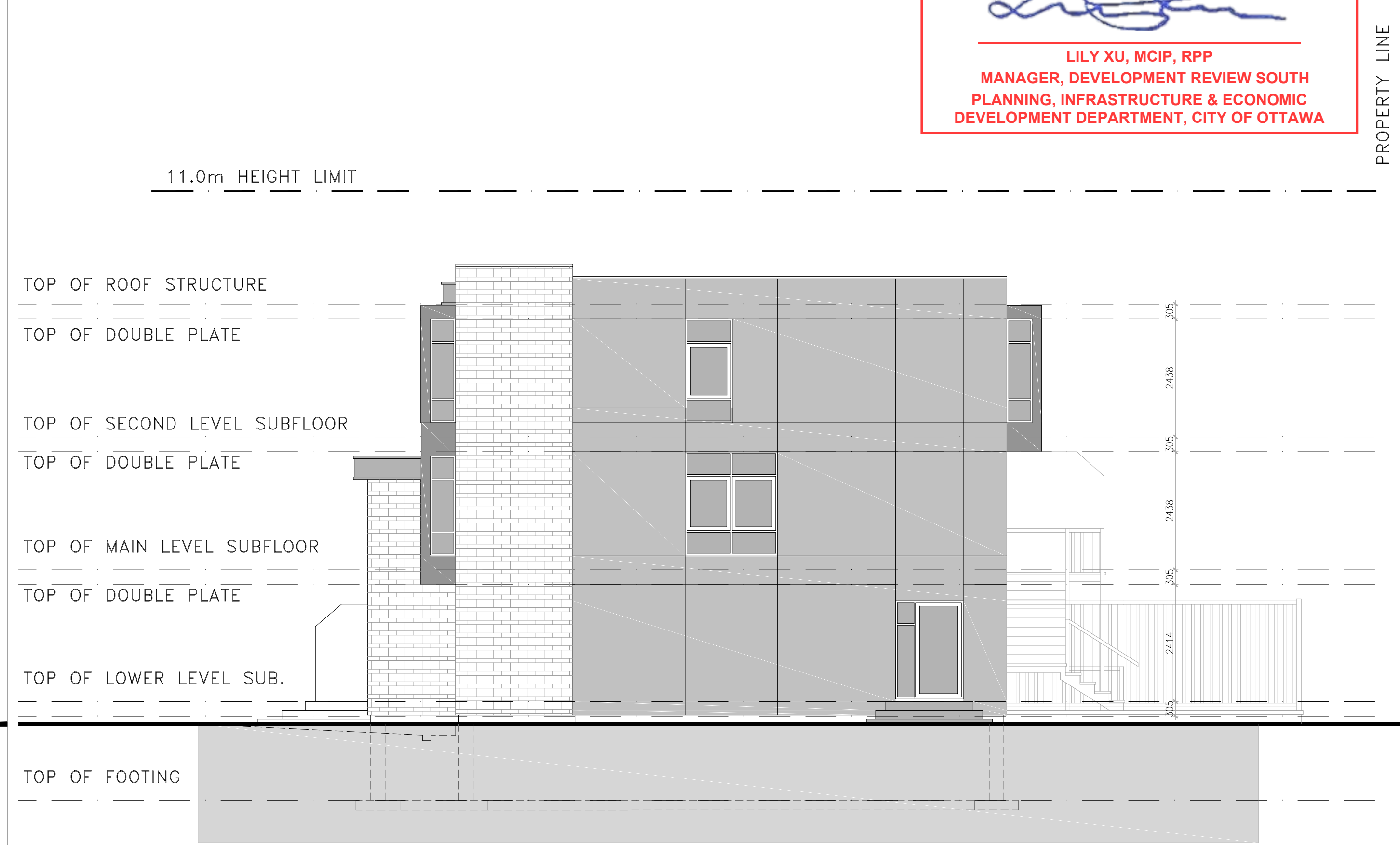


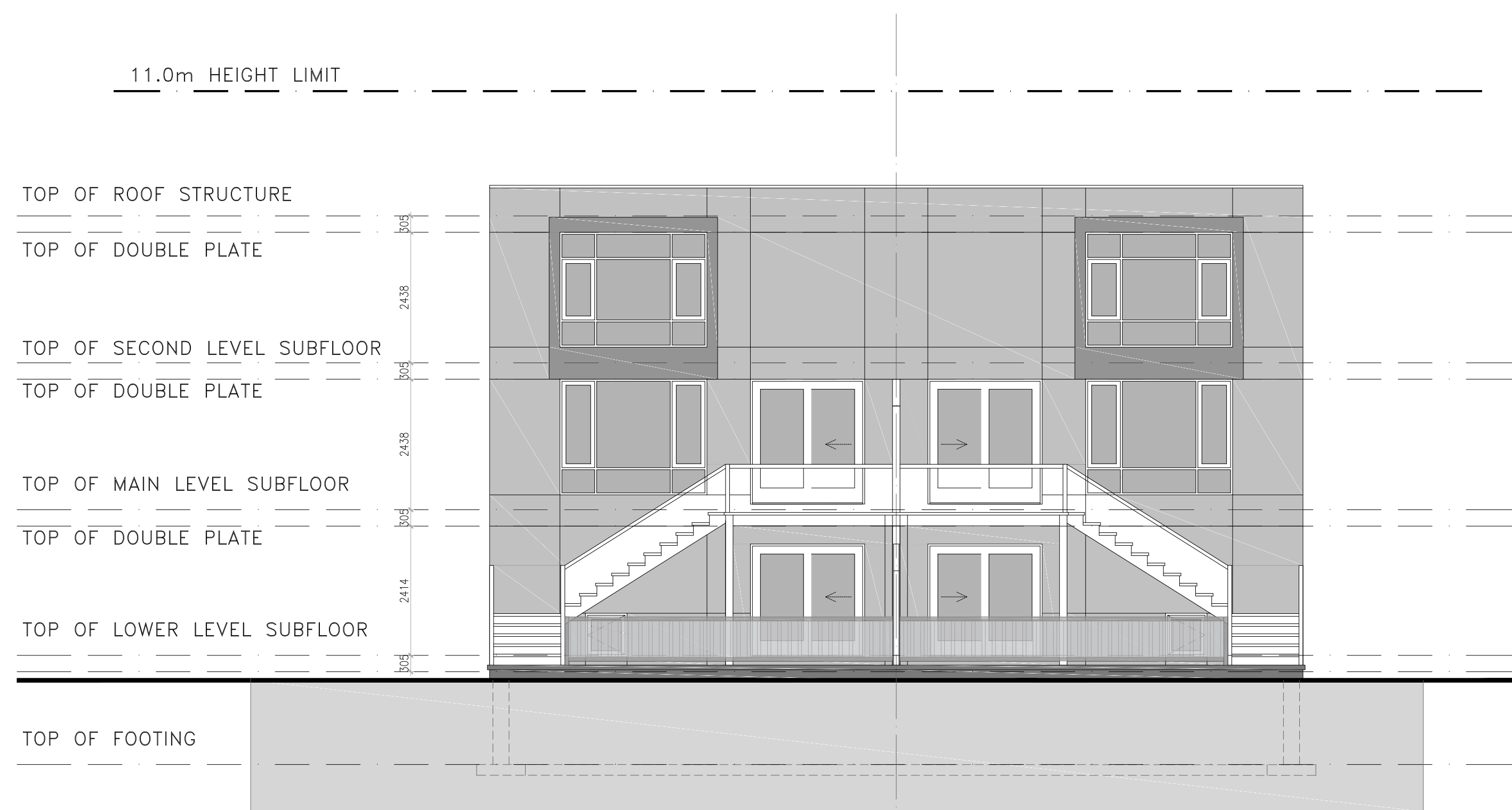
*Lily Xu*  
**APPROVED**  
 By Lily Xu at 12:58 pm, Apr 27, 2023  
 LILY XU, MCIP, RPP  
 MANAGER, DEVELOPMENT REVIEW SOUTH  
 PLANNING, INFRASTRUCTURE & ECONOMIC  
 DEVELOPMENT DEPARTMENT, CITY OF OTTAWA



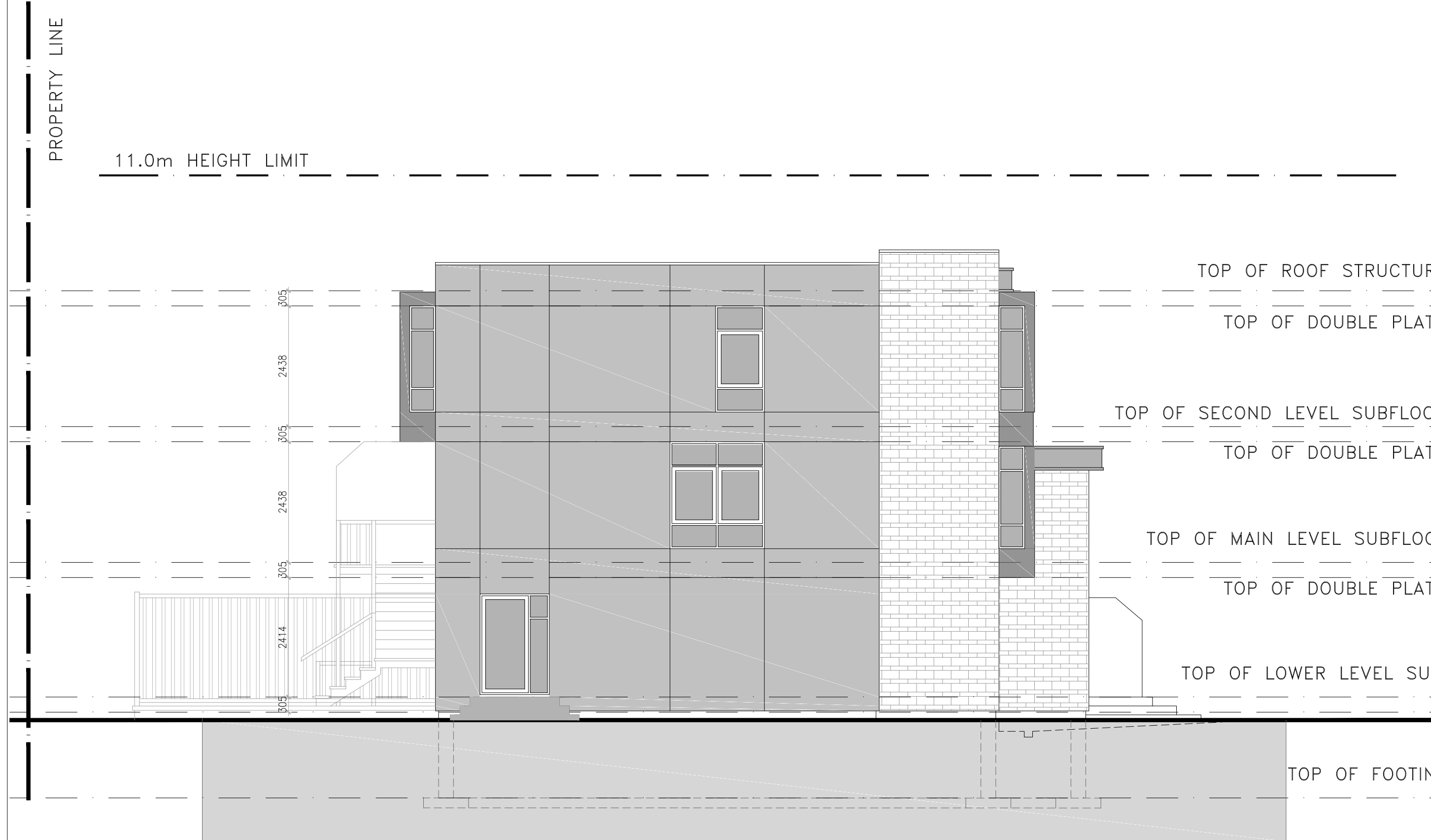
1 FRONT ELEVATION  
 A-200 SCALE 1:75



2 RIGHT SIDE ELEVATION  
 A-200 SCALE 1:75



3 REAR ELEVATION  
 A-200 SCALE 1:75



4 LEFT SIDE ELEVATION  
 A-200 SCALE 1:75

11			
10			
09			
08			
07			
06			
05			
04			
03			
02			
01	FOR REVIEW	PR	2022-03-29
No.	REVISIONS	BY	DATE

NOT AUTHENTIC UNLESS SIGNED AND DATED  
**P<sup>2</sup> concepts**  
 739 BROADWOOD AVE. UNIT 201  
 OTTAWA, ONTARIO, K1V 6A8

CONSULTING ENGINEERS  
 STRUCTURAL  
 MECHANICAL  
 ELECTRICAL

DESIGNED BY: P.E.  
 DRAWN BY: H.N.  
 APPROVED BY: P.E.

PROJECT  
 3130 WOODROFFE AVENUE  
 SEMI-DETACHED HOME

DRAWING TITLE  
 BUILDING ELEVATIONS

PROJECT NO.  
 0391  
 DATE  
 MAR 29, 2022

**A-200**