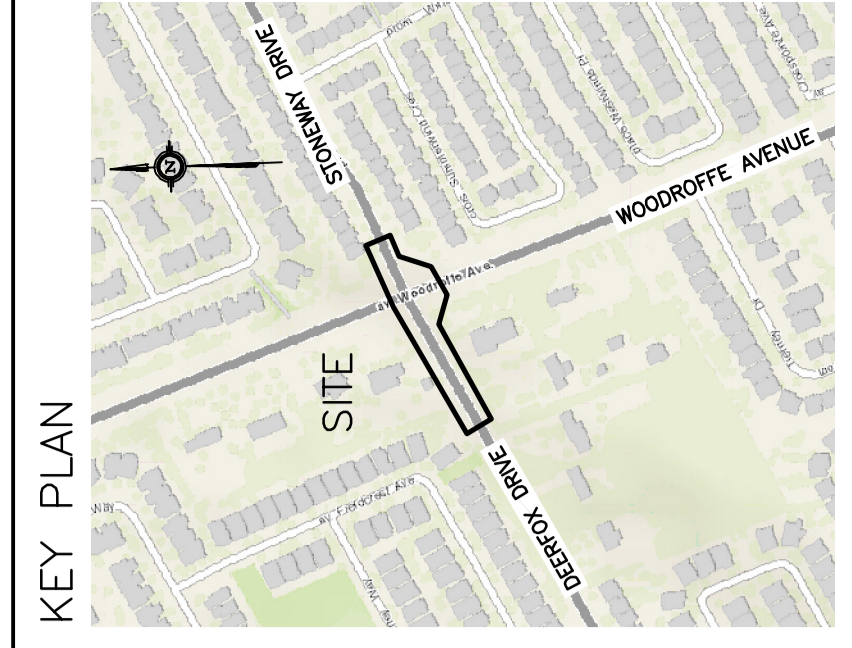


CB	CATCH-BASIN
MH	STORM MANHOLE
CB/MH	CATCH BASIN/MANHOLE
MH	SANITARY MANHOLE
VC	VALVE CHAMBER
SPL	SPRINGLINE OF PIPE
INV	INVERT OF PIPE
SAN	SANITARY SEWER
ST	STORM SEWER
WS/WV	WATER SERVICE/WATERMAIN
CS	CURB STOP & STANDPOST
VB	VALVE & VALVE BOX
FH	FIRE HYDRANT
	EXISTING GRADE ELEVATION
OHW	OVER HEAD WIRE
H	HYDRO
B	BELL TELEPHONE
CAB	CABLE
G	GAS
T	TRAFFIC
---	PROPERTY LINE



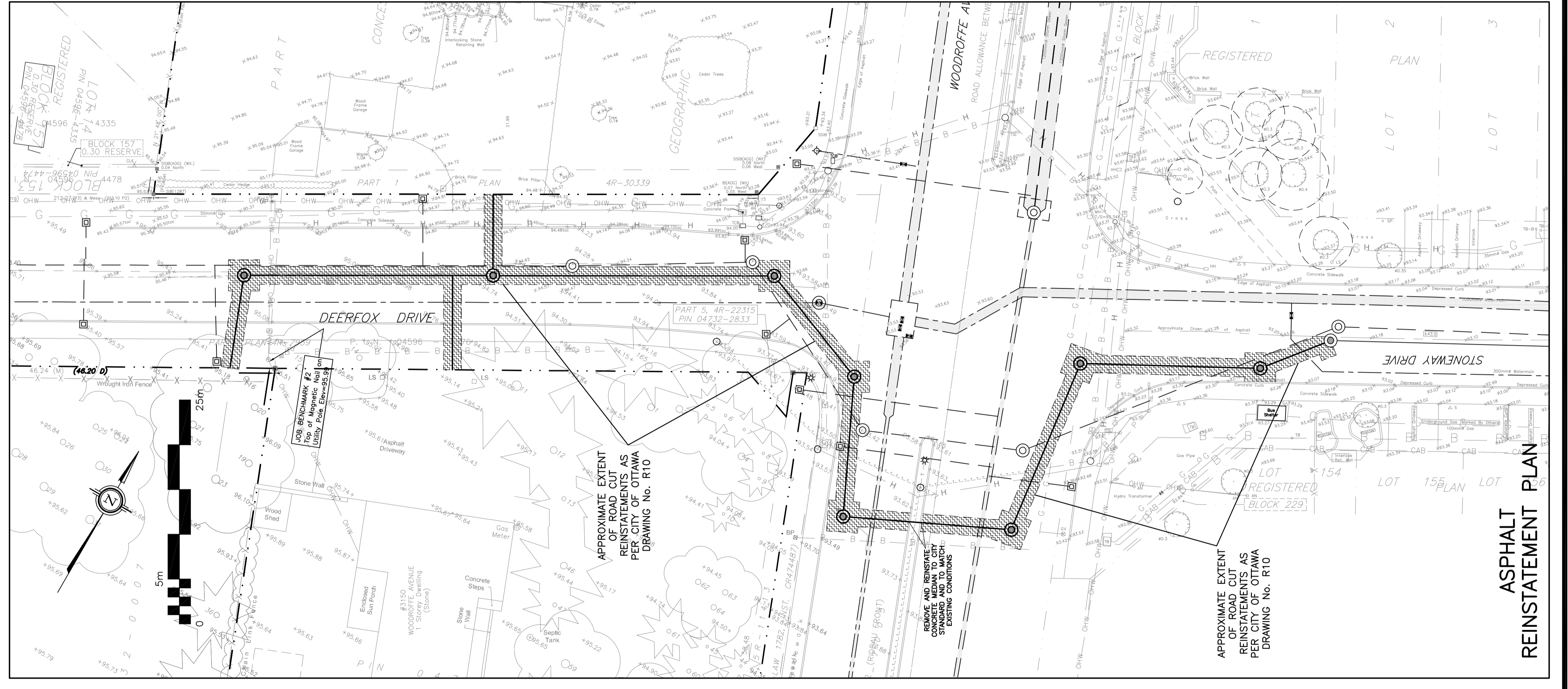
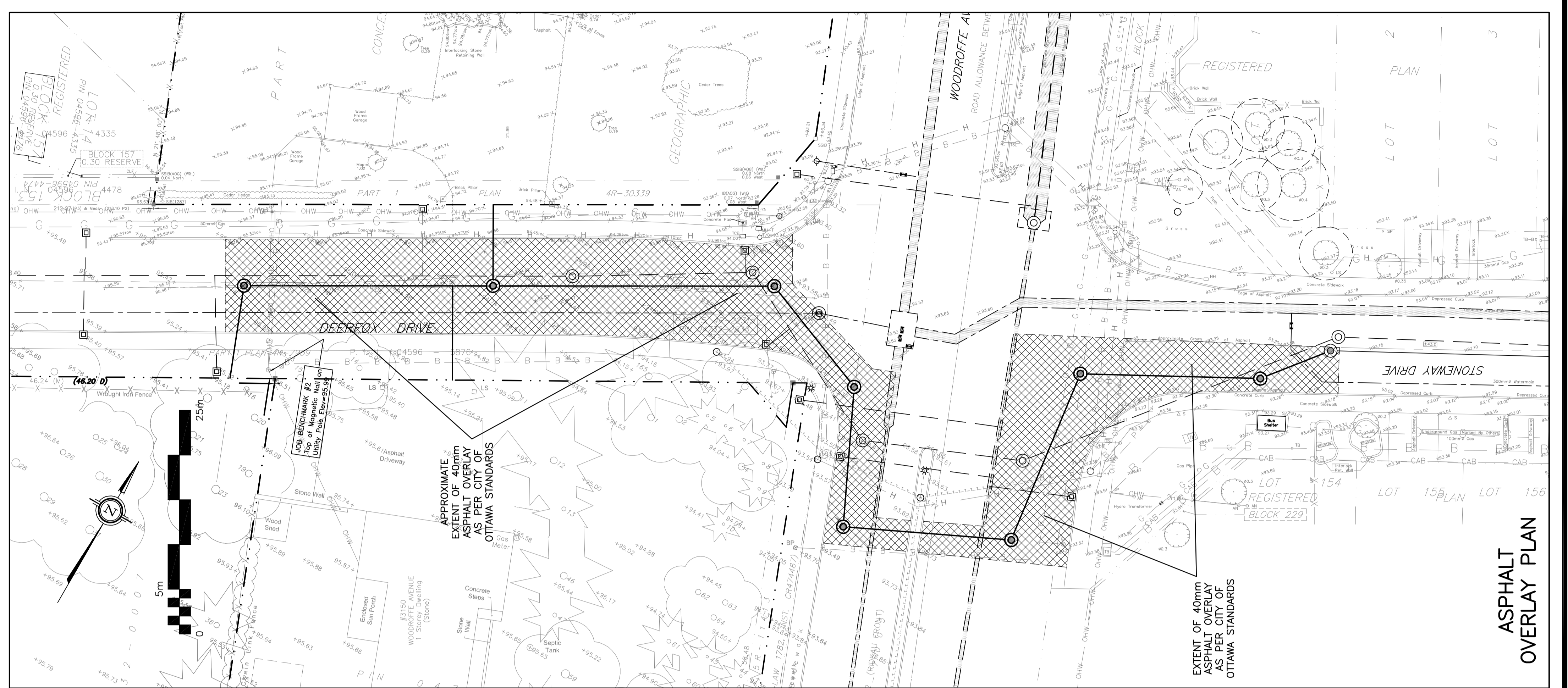
No.	DATE	REVISION
3	FEB 14-23	RE-ISSUED TO CITY FOR APPROVAL
2	JAN 27-23	RE-ISSUED TO CITY FOR APPROVAL
1	DEC 22-22	ISSUED TO CITY FOR APPROVAL

D. B. GRAY ENGINEERING INC.
 Surveyor (Engineer - Consulting & Planning - Survey & Utility Survey - Infrastructure)
 700 Long Point Circle
 Ottawa, Ontario K1G 0A4
 613-825-8044
 dgray@dbgrayengineering.com

MUNICIPAL SANITARY SEWER EXTENSION CROSSING WOODROFFE AVENUE FROM STONEWAY DRIVE TO DEERFOX DRIVE OTTAWA, ONTARIO

Drawing Title
ASPHALT REINSTATEMENT AND OVERLAY PLANS

Engineer's Seal
 D.B. GRAY
 FEB 14-23
 17016502
 NOT VALID UNLESS SIGNED & DATED



APPROVED
 By Lily Xu at 12:49 pm, Apr 27, 2023

Lily Xu

LILY XU, MCP, RPP
 MANAGER, DEVELOPMENT REVIEW SOUTH
 PLANNING, INFRASTRUCTURE & ECONOMIC
 DEVELOPMENT DEPARTMENT, CITY OF OTTAWA