

| PARKING CALCULATIONS | | | |
|--|---------------------|-----------------------|--------------|
| MOTOR VEHICLE PARKING | | | |
| REQUIRED - PARKING CALCULATIONS MAIN BUILDING (INCL. ADDITION) | | | |
| GRADES 7&8 = 1.5 STALLS/CLASS x 19 CLASSROOMS = 29 SPACES | | | |
| GRADES 9-12 = 2 STALLS/CLASS x 37 CLASSROOMS = 74 SPACES | | | |
| TOTAL REQUIRED PARKING SPACES MAIN BUILDING | 103 SPACES | | |
| REQUIRED - PARKING CALCULATIONS 16 EXISTING PORTABLES | | | |
| GRADES 7&8 = 1.5 STALLS/CLASS x 8 PORTABLES = 12 SPACES | | | |
| GRADES 9-12 = 2 STALLS/CLASS x 8 PORTABLES = 16 SPACES | | | |
| TOTAL REQUIRED PORTABLE PARKING SPACES | 28 SPACES | | |
| TOTAL REQUIRED ADDITIONAL PARKING SPACES FOR THE PHYSICALLY DISABLED PER CITY OF OTTAWA ACCESSIBILITY DESIGN STANDARD 3.1.2 TABLE 3. | | | |
| TYPE A | 2 SPACES | | |
| TYPE B | 3 SPACES | | |
| PROVIDED PARKING SPACES | | | |
| SPACES @ 5.2m X 2.6m | 136 SPACES | | |
| TYPE A BARRIER FREE SPACES @ 5.2m X 3.4m MIN. | 2 SPACES | | |
| TYPE B BARRIER FREE SPACES @ 5.2m X 2.6m | 3 SPACES | | |
| TOTAL SPACES PROVIDED | 141 SPACES | | |
| REQUIRED BICYCLE PARKING | | | |
| | GROSS AREA | SPACES PER | SPACES REQ'D |
| MAIN BUILDING INCLUDING ADDITION | 7,963m ² | 1 / 100m ² | 80 SPACES |
| EXISTING PORTABLES | 1,072m ² | 1 / 100m ² | 11 SPACES |
| TOTAL REQUIRED PARKING SPACES | 91 SPACES | | |
| TOTAL SPACES PROVIDED | 108 SPACES | | |
| LOADING SPACES (3.5m X 7m) | | | |
| | USE | TABLE 113A | SPACES REQ'D |
| SCHOOL | 9,035m ² | COLUMN VI | 2 SPACES |
| TOTAL SPACES PROVIDED | 2 SPACES | | |

| SITE DATA | | | |
|---|--------------------------|---|--|
| ANNIS, O'SULLIVAN, VOLLEBECK SURVEYING LTD. (613)-727-0850 JOB NO: 19381-17 | | LOT AREA 50,587 m ² | |
| LEGAL DESCRIPTION: PART OF LOTS 2 AND 3 CONCESSION 3 GEOGRAPHIC TOWNSHIP OF GLOUCESTER CITY OF OTTAWA | | FOOTPRINT EXISTING SCHOOL FOOTPRINT 6,866 m ² NEW ADDITION FOOTPRINT 1,050 m ² EXISTING PORTABLES FOOTPRINT 1,157 m ² | |
| | | GROSS FLOOR AREA (GFA) (AS PER CITY OF OTTAWA ZONING DEFINITION) EXISTING SCHOOL GFA 6,835 m ² NEW ADDITION GFA 1,328 m ² EXISTING PORTABLES GFA 1,072 m ² TOTAL GROSS FLOOR AREA 9,035 m ² | |
| CITY OF OTTAWA ZONING | | | |
| ZONING - I1B SUBZONE | REQUIRED | PROVIDED | |
| LOT AREA | MIN. 400.0m ² | 50,597m ² | |
| LOT WIDTH | MIN. 15.0m | 209m | |
| LOT COVERAGE | MAX. 35% | 15% | |
| BUILDING HEIGHT | MAX. 13.0m | 11.8m | |
| FRONT YARD SETBACK | MIN. 7.5m | 10.5m | |
| REAR YARD SETBACK | MIN. 7.5m | 154.9m | |
| INTERIOR SIDE YARD SETBACK | MIN. 7.5m | 43.0m | |
| CORNER SIDE YARD SETBACK | MIN. 4.5m | 9.1m | |

- ### DRAWING NOTES
- EXISTING PORTABLES
 - EXISTING PRECAST CONCRETE SHED
 - EXISTING GARBAGE ENCLOSURE
 - EXISTING TRANSFORMER
 - ARMOUR STONE SEATING CIRCLE NEW LOCATION

- ### GENERAL NOTES
- EXTENT OF CONTRACT IS LIMITED TO WITHIN PROPERTY EXCEPT WHERE SHOWN OTHERWISE.
 - ALL WORK OUTSIDE PROPERTY LINE TO BE CONSTRUCTED TO CITY OF OTTAWA CONSTRUCTION STANDARDS.
 - FOR LANDSCAPE/PLANTING DETAILS SEE DRAWING AS PREPARED BY JBLA.
 - FOR SITE GRADING INFORMATION SEE GRADING & DRAINAGE DRAWING AS PREPARED BY WSP.
 - FOR SITE SERVICES INFORMATION SEE SITE SERVICES DRAWING AS PREPARED BY WSP.
 - FOR SOIL INVESTIGATION REPORT REFER TO REPORT PREPARED BY EXP SERVICES.
 - SLOPES OF CONCRETE/PAVING AT DEPRESSED CURBS SHALL NOT EXCEED 5%.
 - CONTRACTOR TO VERIFY ALL DIMENSIONS ON SITE AND REPORT ANY ERRORS TO THE ARCHITECT. CONTRACTOR TO COORDINATE WITH ALL DRAWINGS.
 - FOR SITE SURVEY INFORMATION, SEE TOPOLOGICAL SURVEY DRAWING PREPARED BY .

LEGEND

| | |
|--|---|
| | BARRIER FREE PARKING |
| | BUILDING ENTRANCE/EXIT |
| | EXISTING BOLLARD TO REMAIN |
| | EXISTING CURB |
| | EXISTING DEPRESSED CURB |
| | EXISTING SEMI-MOUNTABLE DEPRESSED CURB |
| | EXISTING CHAIN LINK FENCE TO REMAIN |
| | TO BE DEMOLISHED / REMOVED |
| | ROAD CENTER LINE |
| | FIRE ROUTE |
| | SET BACK LINE |
| | PROPERTY LOT LINE |
| | EXISTING FIRE ROUTE SIGN TO REMAIN |
| | EXISTING HANDICAPPED PARKING SIGN TO REMAIN |
| | EXISTING DROP-OFF SIGN TO REMAIN |
| | EXISTING ONE WAY SIGN TO REMAIN |
| | EXISTING NO ENTRY SIGN TO REMAIN |
| | EXISTING NO PARKING SIGN |
| | EXISTING LOADING AREA SIGN TO REMAIN |
| | EXISTING MISC. TRAFFIC SIGN TO REMAIN |
| | EXISTING LIGHT STANDARD TO REMAIN |
| | EXISTING IRON BAR (REFER TO SURVEY) |
| | EXISTING FIRE DEPARTMENT CONNECTION TO REMAIN |
| | EXISTING FIRE HYDRANT TO REMAIN |
| | EXISTING MAN HOLE TO REMAIN |
| | EXISTING CATCH BASIN TO REMAIN |
| | EXISTING FLAG POLE TO REMAIN |
| | NEW BOLLARD |
| | NEW CURB |
| | NEW DEPRESSED CURB |
| | NEW MAN HOLE (REFER TO CIVIL) |
| | NEW CATCH BASIN (REFER TO CIVIL) |

LEGEND

| | |
|--|--|
| | SHADE INDICATES EXISTING TO REMAIN |
| | EXISTING UNIT PAVERS TO REMAIN |
| | EXISTING UNIT PAVERS WITH HEAVY DUTY GRANULAR BASE TO REMAIN |
| | EXISTING HEAVY DUTY ASPHALT PAVING TO REMAIN |
| | EXISTING LIGHT DUTY ASPHALT PAVING TO REMAIN |
| | EXISTING CONCRETE WALK TO REMAIN |
| | EXISTING CRUSHED STONE PATHWAY TO REMAIN |
| | EXISTING MULCH TO REMAIN |
| | EXISTING TREES TO REMAIN (REFER TO LANDSCAPE DOCUMENTS) |
| | EXISTING ARMOUR STONE RETAINING WALL |
| | NEW ASPHALT - LIGHT DUTY (REFER TO SPEC.) |
| | NEW CONCRETE WALK |
| | NEW GRASS (REFER TO LANDSCAPE DOCUMENTS) |
| | NEW TREES (REFER TO LANDSCAPE DOCUMENTS) |

| | | | |
|---|---|------------|------------------------------|
| 2 | 0 | 2023/04/26 | SPC COMMENTS 01 RESPONSE |
| 1 | 0 | 2022/11/11 | ISSUED FOR SITE PLAN CONTROL |

| ISSUE NO. | REV. NO. | DATE | ISSUE |
|-----------|----------|------|-------|
| | | | |

LES IDÉES, CONCEPTS, DISPOSITIONS ET PLANS MONTRÉS OU REPRÉSENTÉS PAR CE DESSIN APPARTIENNENT À EDWARD J. CUHACI AND ASSOCIATES ARCHITECTS INC. ET ONT ÉTÉ CRÉÉS ET DÉVELOPPÉS POUR ÊTRE UTILISÉS DANS LE CADRE DU PRÉSENT PROJET. ILS NE DOIVENT PAS ÊTRE UTILISÉS À D'AUTRES FINS NI COMMUNIQUÉS À QUI QUE CE SOIT SANS LA PERMISSION ÉCRITE DE EDWARD J. CUHACI AND ASSOCIATES ARCHITECTS INC.

L'ARCHITECTE DÉCLINE TOUTE RESPONSABILITÉ DÉCOULANT DE PROBLÈMES FAISANT SUITE AU NON-RESPECT DES PLANS ET DEVIS OU DE L'INTENTION DU CONCEPT QU'ILS TRANSMETTENT OU DE TOUTS PROBLÈMES POUVANT RÉSULTER DU DÉFAUT DE TIERS D'OBTENIR OU DE SUIVRE LES INSTRUCTIONS DE L'ARCHITECTE RELATIVEMENT AUX ERREURS, OMISSIONS, INCOHÉRENCES, AMBIGUITÉS OU CONTRADICTIONS ALLÉGUÉES.

L'ENTREPRENEUR DOIT VÉRIFIER TOUTES LES DIMENSIONS SUR PLACE ET INFORMER L'ARCHITECTE DE TOUT ÉCART AVANT LE DÉBUT DES TRAVAUX. NE PAS MESURER LES DESSINS À L'ÉCHELLE.

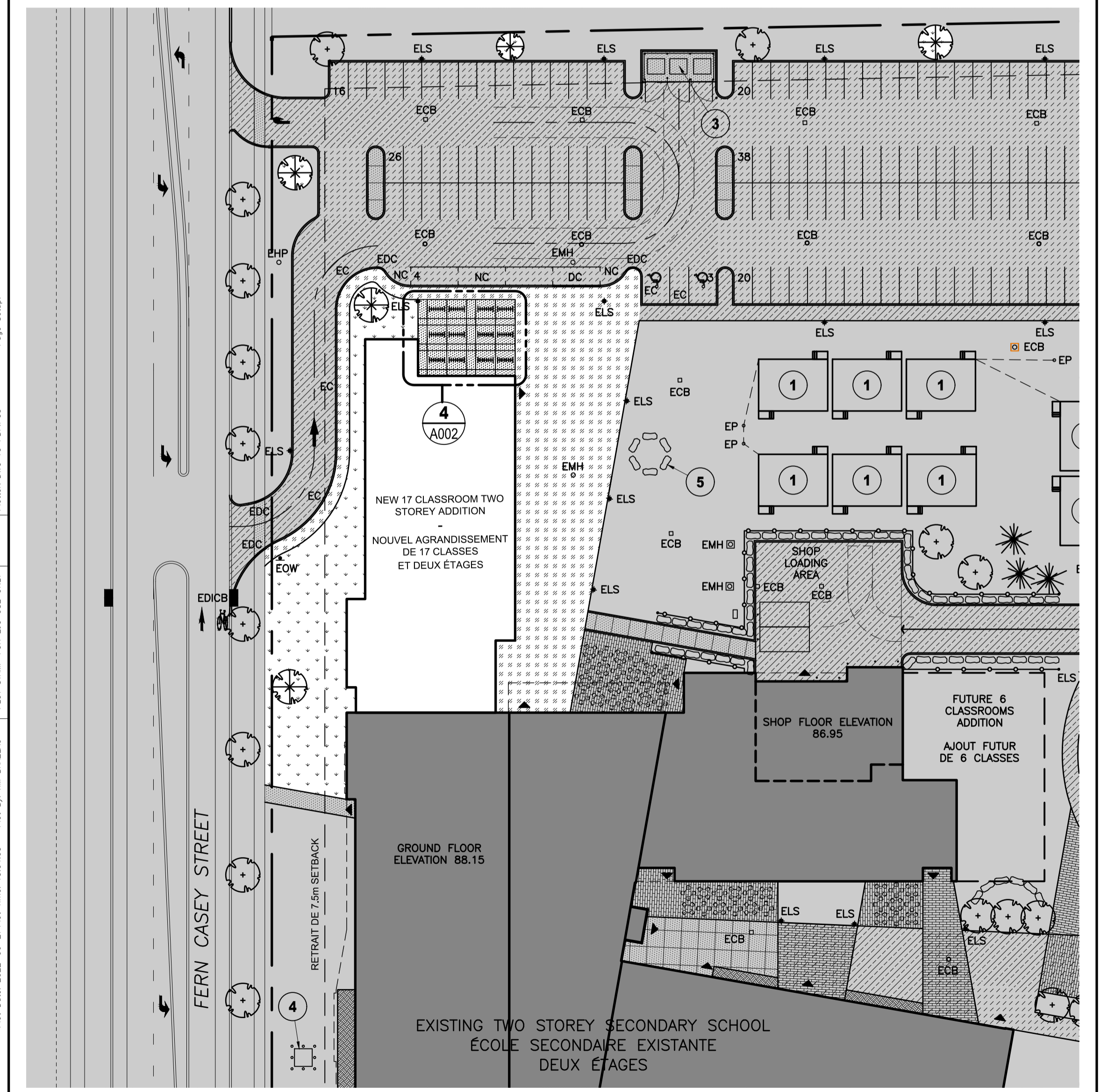
ALL IDEAS, DESIGNS, ARRANGEMENTS, AND PLANS INDICATED OR REPRESENTED BY THIS DRAWING ARE OWNED BY AND THE PROPERTY OF EDWARD J. CUHACI AND ASSOCIATES INC. AND WERE CREATED, EVOLVED, AND DEVELOPED FOR USE ON AND IN CONNECTION WITH THE SPECIFIED PROJECT. NONE OF THE IDEAS, DESIGNS, ARRANGEMENTS OR PLANS SHALL BE USED BY OR DISCLOSED TO ANY PERSON, FIRM, OR CORPORATION FOR ANY PURPOSE WHATSOEVER WITHOUT THE WRITTEN PERMISSION OF EDWARD J. CUHACI AND ASSOCIATES INC.

THE ARCHITECT WAIVES ANY AND ALL RESPONSIBILITY AND LIABILITY FOR PROBLEMS WHICH ARISE FROM FAILURE TO FOLLOW THESE PLANS, SPECIFICATIONS, AND THE DESIGN INTENT THEY CONVEY, OR FOR PROBLEMS WHICH ARISE FROM OTHERS' FAILURE TO OBTAIN AND/OR FOLLOW THE ARCHITECT'S GUIDANCE WITH RESPECT TO ANY ERRORS, OMISSIONS, INCONSISTENCIES, AMBIGUITIES OR CONFLICTS WHICH ARE ALLEGED.

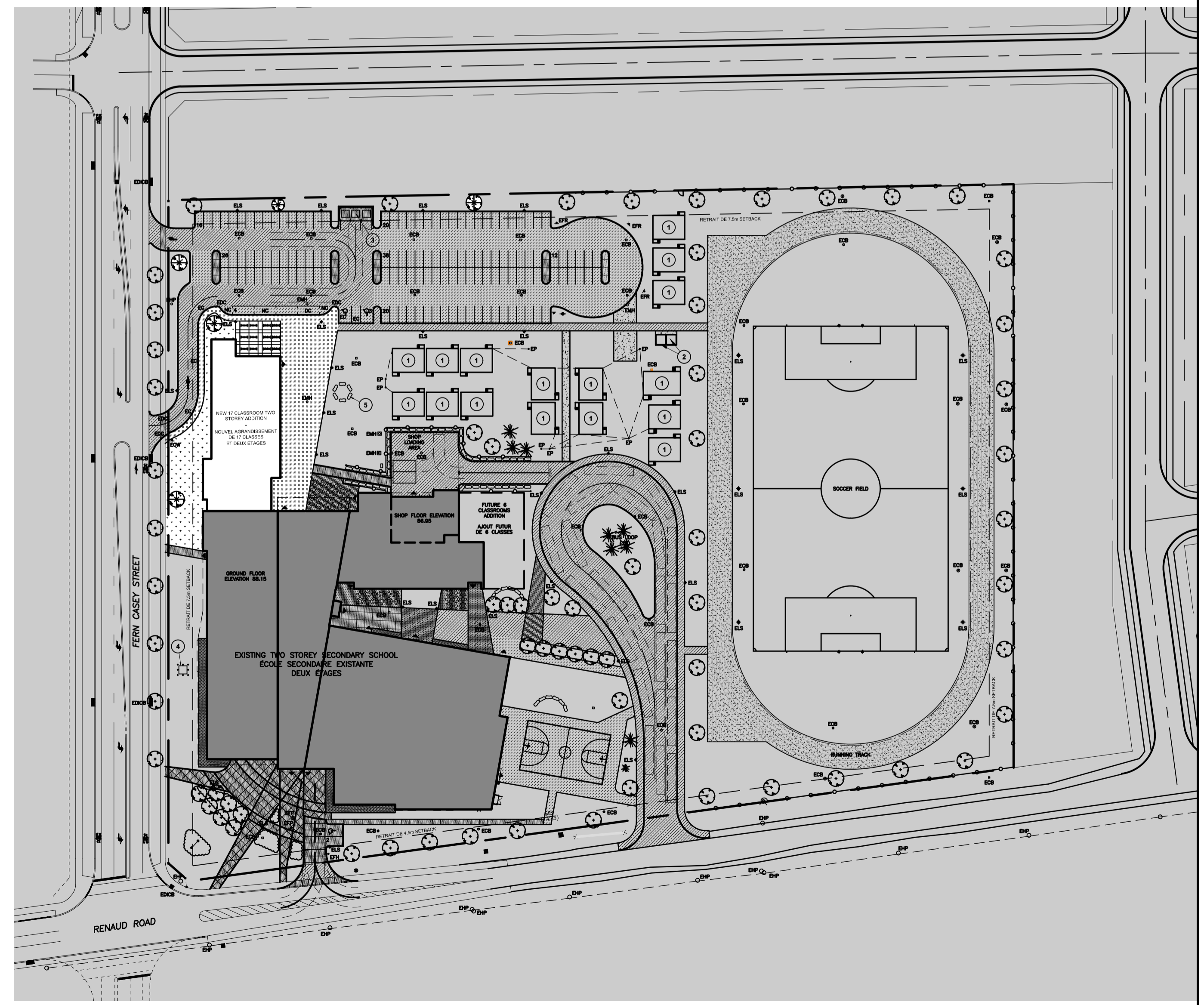
CONTRACTOR TO VERIFY ALL DIMENSIONS AND NOTIFY THE ARCHITECT OF ANY DISCREPANCIES BEFORE WORK COMMENCES. DO NOT SCALE DRAWINGS

TRUE NORTH

PLAN NORTH



1 SITE PLAN - ADDITION
A001 1:500



2 SITE PLAN - OVERALL
A001 1:1000

EDWARD J. CUHACI & ASSOCIATES ARCHITECTS Inc.
171 Slater St. Suite 100, Ottawa, Ontario, K1P 5H7
Fax: (613) 238-1944 Telephone: (613) 238-7135 E-mail: info@jcuhaci.com

PROJECT TITLE/TITRE DU PROJET
COLLÈGE CATHOLIQUE MER BLEUE - ADDITION
6401 RENAUD RD, OTTAWA, ON, K1W 0H8

CONSEIL DES ÉCOLES CATHOLIQUES DU CENTRE-EST
4000, RUE LABELLE, OTTAWA, ON K1J 1A1

DRAWING TITLE/TITRE DU DESSIN
SITE PLAN

| | | | |
|---------------------------|------------------|---------------|--------------|
| SCALE ÉCHELLE | PROJ. No 2237 | ISSUE No 1 | REV. No 0 |
| DRAWN BY DESSINÉ PAR | DRAWING/DESSIN | | |
| CHECKED BY VÉRIFIÉ PAR | JJ | | |
| DATE | 2022 | | |

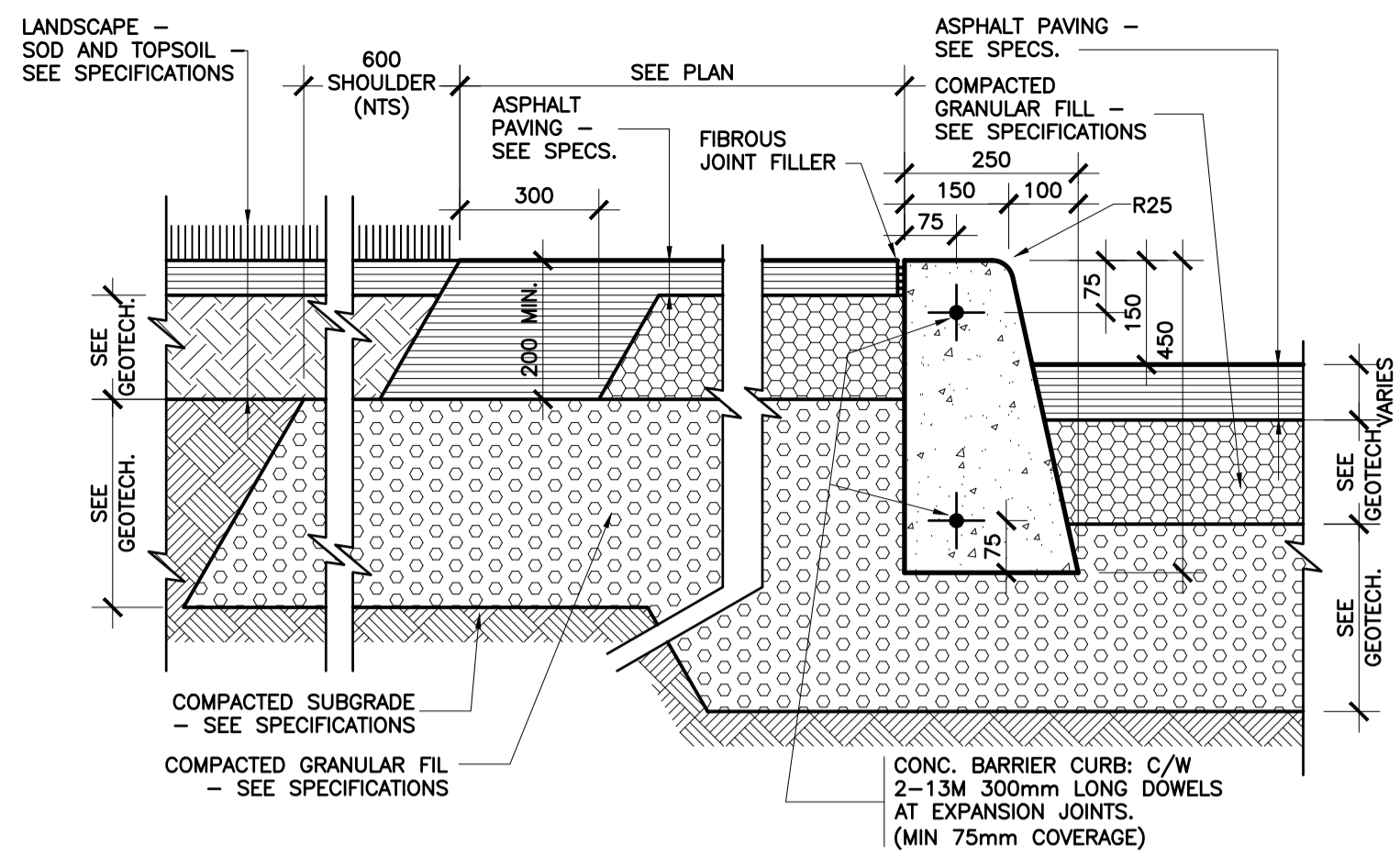
A001

FICHER ACAD FILE: 2237-A001 SPC.dwg

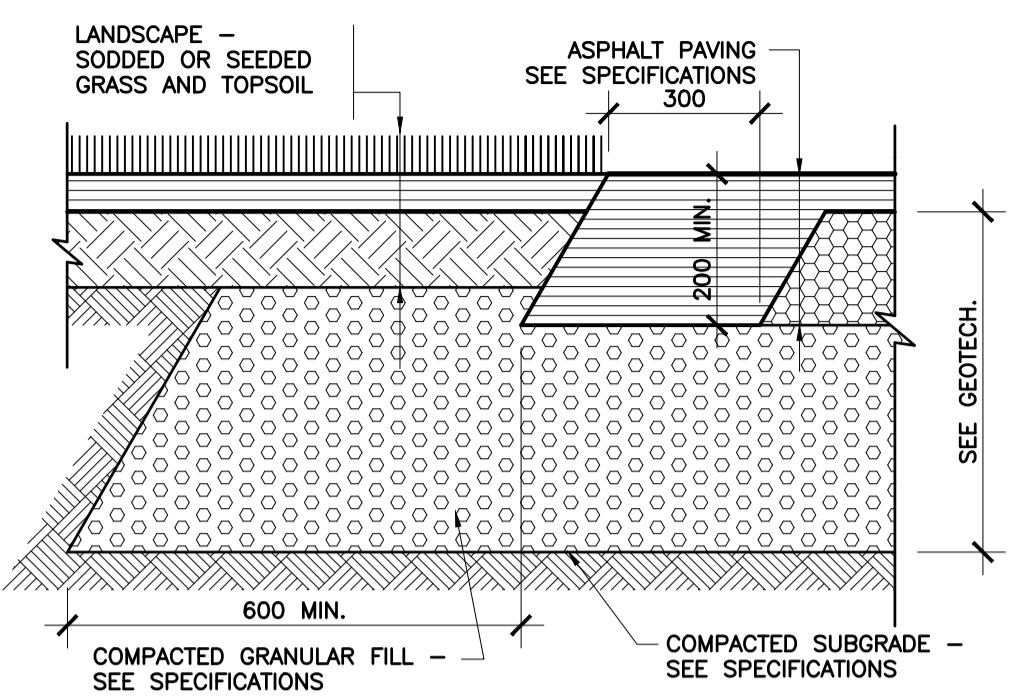
Plot Date: 2022-06-27 Plot Time: 15:54:53 Plot By: JM BRUNOUI
 PLOT STAMP FOR E&C USE ONLY
 PLOTTER: DWG TO PDF PLOT3
 Page Setup:

D07-12-23-0009

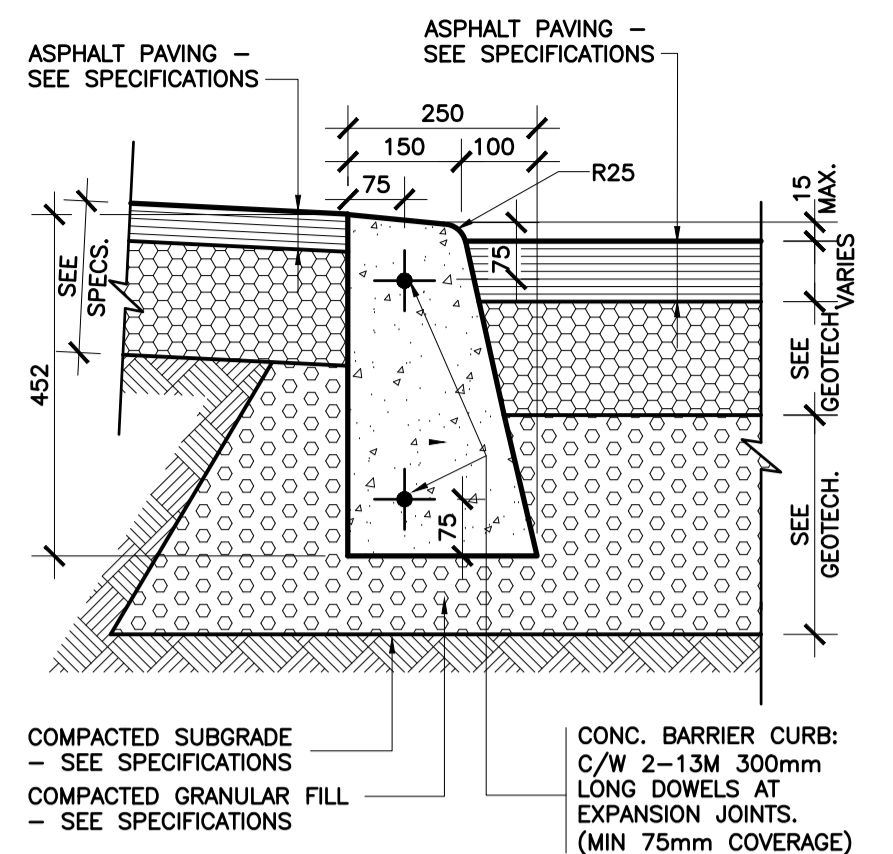
#XXXXXX



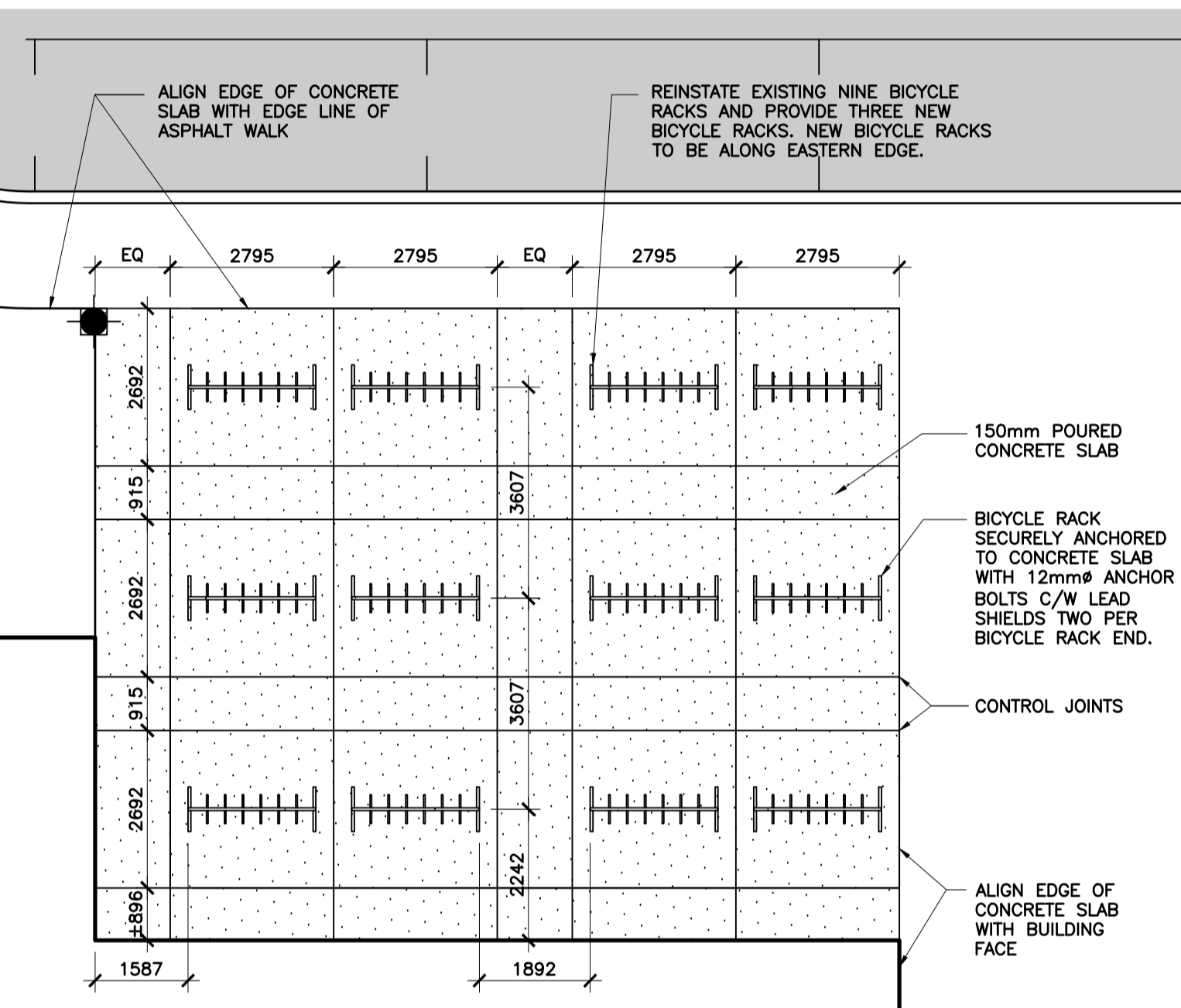
1
SECTION DETAIL
ASPHALT SIDEWALK
A002 1:10



2
SECTION DETAIL
ASPHALT AT GRASS
A002 1:10



3
SECTION DETAIL
DEPRESSED CURB AT ASPHALT WALK
A002 1:10



4
PLAN DETAIL
BICYCLE PARKING
A002 1:100

| 2 | 0 | 2023/04/26 | SPC COMMENTS 01 RESPONSE |
|-----------|----------|------------|------------------------------|
| 1 | 0 | 2022/11/11 | ISSUED FOR SITE PLAN CONTROL |
| ISSUE NO. | REV. NO. | DATE | ISSUE |

LES IDÉES, CONCEPTS, DISPOSITIONS ET PLANS MONTRÉS OU REPRÉSENTÉS PAR CE DESSIN APPARTIENNENT À EDWARD J. CUHACI AND ASSOCIATES ARCHITECTS INC. ET ONT ÉTÉ CRÉÉS ET DÉVELOPPÉS POUR ÊTRE UTILISÉS DANS LE CADRE DU PRÉSENT PROJET. ILS NE DOIVENT PAS ÊTRE UTILISÉS À D'AUTRES FINS NI COMMUNIQUÉS À QUI QUE CE SOIT SANS LA PERMISSION ÉCRITE DE EDWARD J. CUHACI AND ASSOCIATES ARCHITECTS INC.

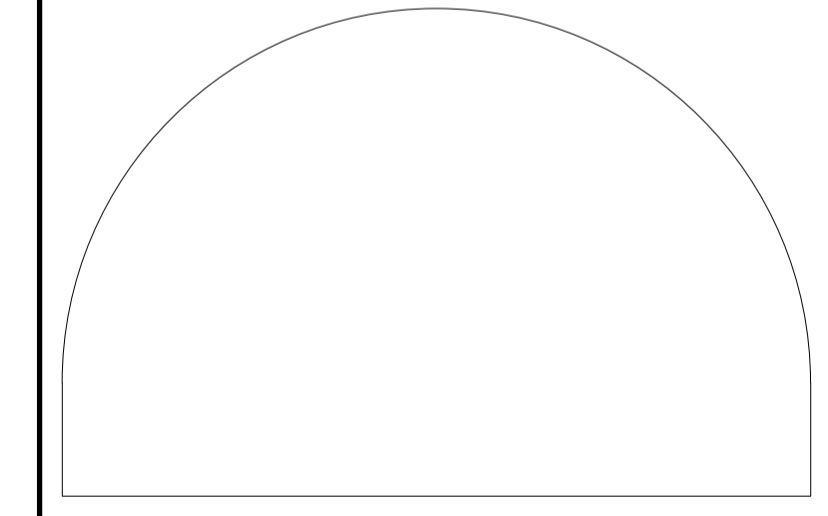
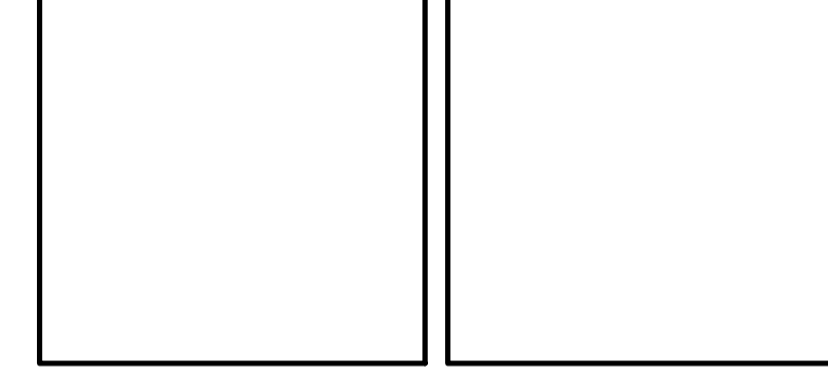
L'ARCHITECTE DÉCLINE TOUTE RESPONSABILITÉ DÉCOULANT DE PROBLÈMES FAISANT SUITE AU NON-RESPECT DES PLANS ET DEVIS OU DE L'INTENTION DU CONCEPT QU'ILS TRANSMETTENT OU DE TOUTS PROBLÈMES POUVANT RÉSULTER DU DÉFAUT DE TIERS D'OBTENIR OU DE SUIVRE LES INSTRUCTIONS DE L'ARCHITECTE RELATIVEMENT AUX ERREURS, OMISSIONS, INCOHÉRENCES, AMBIGUITÉS OU CONTRADICTIONS ALLÉGUÉES.

L'ENTREPRENEUR DOIT VÉRIFIER TOUTES LES DIMENSIONS SUR PLACE ET INFORMER L'ARCHITECTE DE TOUT ÉCART AVANT LE DÉBUT DES TRAVAUX. NE PAS MESURER LES DESSINS À L'ÉCHELLE.

ALL IDEAS, DESIGNS, ARRANGEMENTS, AND PLANS INDICATED OR REPRESENTED BY THIS DRAWING ARE OWNED BY AND THE PROPERTY OF EDWARD J. CUHACI AND ASSOCIATES INC. AND WERE CREATED, EVOLVED, AND DEVELOPED FOR USE ON AND IN CONNECTION WITH THE SPECIFIED PROJECT. NONE OF THE IDEAS, DESIGNS, ARRANGEMENTS OR PLANS SHALL BE USED BY OR DISCLOSED TO ANY PERSON, FIRM, OR CORPORATION FOR ANY PURPOSE WHATSOEVER WITHOUT THE WRITTEN PERMISSION OF EDWARD J. CUHACI AND ASSOCIATES INC.

THE ARCHITECT WAIVES ANY AND ALL RESPONSIBILITY AND LIABILITY FOR PROBLEMS WHICH ARISE FROM FAILURE TO FOLLOW THESE PLANS, SPECIFICATIONS, AND THE DESIGN INTENT THEY CONVEY, OR FOR PROBLEMS WHICH ARISE FROM OTHERS' FAILURE TO OBTAIN AND/OR FOLLOW THE ARCHITECT'S GUIDANCE WITH RESPECT TO ANY ERRORS, OMISSIONS, INCONSISTENCIES, AMBIGUITIES OR CONFLICTS WHICH ARE ALLEGED.

CONTRACTOR TO VERIFY ALL DIMENSIONS AND NOTIFY THE ARCHITECT OF ANY DISCREPANCIES BEFORE WORK COMMENCES. DO NOT SCALE DRAWINGS



EDWARD J. CUHACI & ASSOCIATES ARCHITECTS Inc.
171 Slater St. Suite 100, Ottawa, Ontario, K1P 5H7
Fax: (613) 238-1944 Telephone: (613) 238-7135 E-mail: info@cuhaci.com

PROJECT TITLE/TITRE DU PROJET
COLLÈGE CATHOLIQUE MER BLEUE - ADDITION
6401 RENAUD RD, OTTAWA, ON, K1W 0H8

CONSEIL DES ÉCOLES CATHOLIQUES DU CENTRE-EST
4000, RUE LABELLE, OTTAWA, ON K1J 1A1

DRAWING TITLE/TITRE DU DESSIN
SITE DETAILS

| | | | |
|---------------------------|------------------|--------------------------------------|--------------|
| SCALE ÉCHELLE | PROJ. No 2237 | ISSUE No 1 | REV. No 0 |
| DRAWN BY DESSINÉ PAR | TB | DRAWING/DESSIN | |
| CHECKED BY VÉRIFIÉ PAR | JJ | A002 | |
| DATE | 2022 | FICHIER ACAD FILE: 2237-A002 SPC.dwg | |

LEGEND

- EXISTING BUILDING
- TILT-UP CONCRETE PANEL - PAINT COLOUR 1
- TILT-UP CONCRETE PANEL - PAINT COLOUR 2
- TILT-UP CONCRETE PANEL - PAINT COLOUR 3
- TILT-UP CONCRETE PANEL - PAINT COLOUR 4
- REUSED EXISTING COMPOSITE ALUMINUM PANELS
- THIN BRICK VENEER ON TILT-UP PANEL
- SPANDREL GLAZING
- GLAZED CURTAIN WALL

1 0 2022/11/11 ISSUED FOR SITE PLAN CONTROL

LES IDÉES, CONCEPTS, DISPOSITIONS ET PLANS MONTRÉS OU REPRÉSENTÉS PAR CE DESSIN APPARTIENNENT À EDWARD J. CUHACI AND ASSOCIATES ARCHITECTS INC. ET ONT ÉTÉ CRÉÉS ET DÉVELOPPÉS POUR ÊTRE UTILISÉS DANS LE CADRE DU PRÉSENT PROJET. ILS NE DOIVENT PAS ÊTRE UTILISÉS À D'AUTRES FINS NI COMMUNIQUÉS À QUI QUE CE SOIT SANS LA PERMISSION ÉCRITE DE EDWARD J. CUHACI AND ASSOCIATES ARCHITECTS INC.

L'ARCHITECTE DÉCLINE TOUTE RESPONSABILITÉ DÉCOULANT DE PROBLÈMES FAISANT SUITE AU NON-RESPECT DES PLANS ET DEVIS OU DE L'INTENTION DU CONCEPT QU'ILS TRANSMETTENT OU DE TOUTS PROBLÈMES POUVANT RÉSULTER DU DÉFAUT DE TIERS D'OBTENIR OU DE SUIVRE LES INSTRUCTIONS DE L'ARCHITECTE RELATIVEMENT AUX ERREURS, OMISSIONS, INCOHÉRENCES, AMBIGUITÉS OU CONTRADICTIONS ALLÉGUÉES.

L'ENTREPRENEUR DOIT VÉRIFIER TOUTES LES DIMENSIONS SUR PLACE ET INFORMER L'ARCHITECTE DE TOUT ÉCART AVANT LE DÉBUT DES TRAVAUX. NE PAS MESURER LES DESSINS À L'ÉCHELLE.

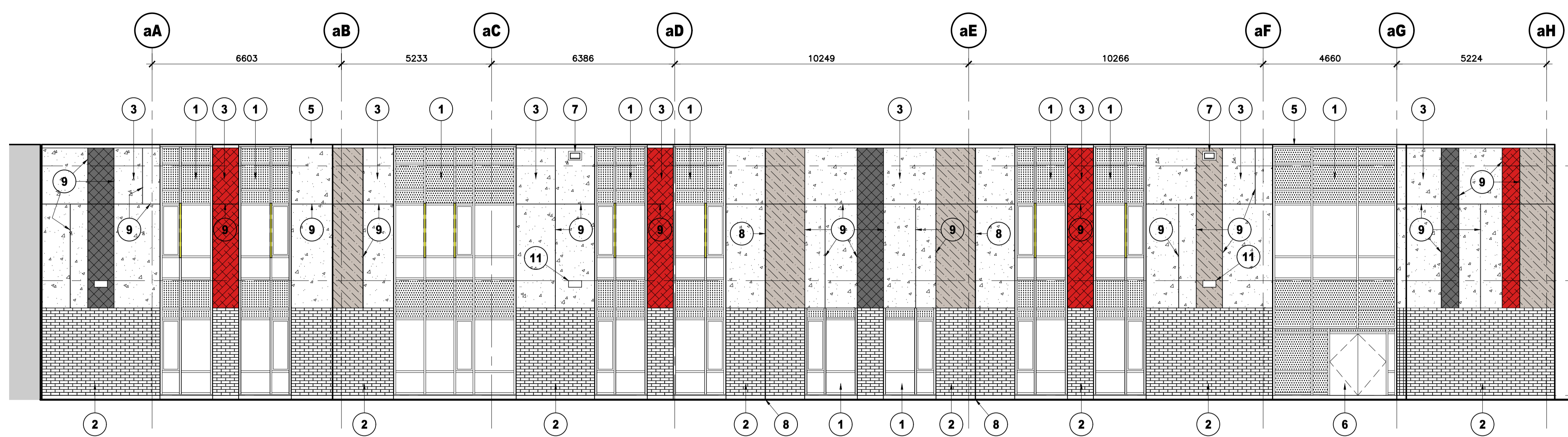
ALL IDEAS, DESIGNS, ARRANGEMENTS, AND PLANS INDICATED OR REPRESENTED BY THIS DRAWING ARE OWNED BY AND THE PROPERTY OF EDWARD J. CUHACI AND ASSOCIATES INC. AND WERE CREATED, EVOLVED, AND DEVELOPED FOR USE ON AND IN CONNECTION WITH THE SPECIFIED PROJECT. NONE OF THE IDEAS, DESIGNS, ARRANGEMENTS OR PLANS SHALL BE USED BY OR DISCLOSED TO ANY PERSON, FIRM, OR CORPORATION FOR ANY PURPOSE WHATSOEVER WITHOUT THE WRITTEN PERMISSION OF EDWARD J. CUHACI AND ASSOCIATES INC.

THE ARCHITECT WAIVES ANY AND ALL RESPONSIBILITY AND LIABILITY FOR PROBLEMS WHICH ARISE FROM FAILURE TO FOLLOW THESE PLANS, SPECIFICATIONS, AND THE DESIGN INTENT THEY CONVEY, OR FOR PROBLEMS WHICH ARISE FROM OTHERS' FAILURE TO OBTAIN AND/OR FOLLOW THE ARCHITECT'S GUIDANCE WITH RESPECT TO ANY ERRORS, OMISSIONS, INCONSISTENCIES, AMBIGUITIES OR CONFLICTS WHICH ARE ALLEGED.

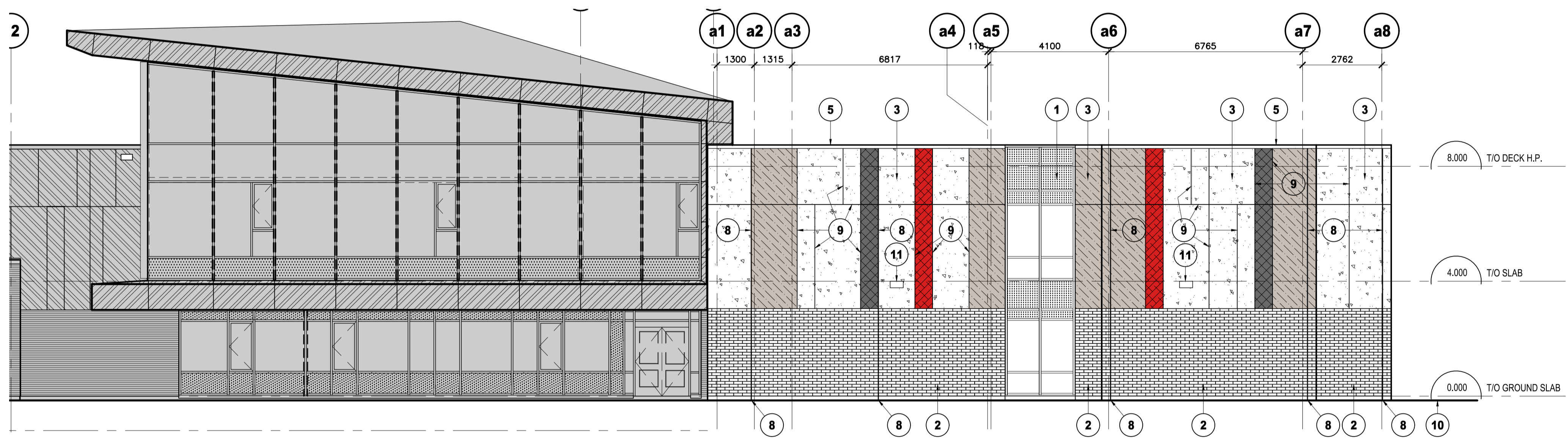
CONTRACTOR TO VERIFY ALL DIMENSIONS AND NOTIFY THE ARCHITECT OF ANY DISCREPANCIES BEFORE WORK COMMENCES. DO NOT SCALE DRAWINGS

DRAWING NOTES

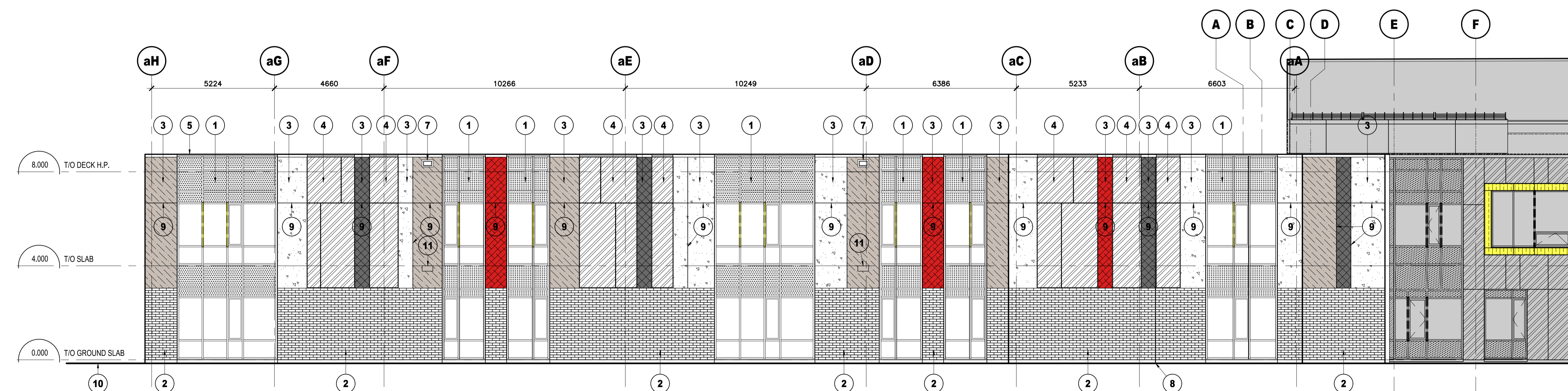
- 1 NEW CURTAIN WALL ASSEMBLY, REFER TO WINDOW SCHEDULE
- 2 NEW TILT-UP CONCRETE PANEL WITH THIN BRICK VENEER
- 3 NEW TILT-UP CONCRETE PANEL WITH PAINT FINISH, REFER TO LEGEND.
- 4 NEW TILT-UP CONCRETE PANEL WITH RELOCATED EXISTING COMPOSITE ALUMINUM PANELS. REFER TO DETAILS FOR ARRANGEMENT INFORMATION.
- 5 NEW PARAPET CAP FLASHING
- 6 NEW ALUMINUM DOOR, REFER TO DOOR SCHEDULE
- 7 NEW OVERFLOW ROOF SCUPPER
- 8 NEW TILT-UP CONCRETE PANEL JOINT
- 9 NEW TILT-UP CONCRETE 13mm WIDE REVEAL JOINTS, REFER TO DETAIL. ALIGN WITH CENTER OF NEIGHBOURING CURTAIN WALL MULLIONS WHERE APPLICABLE. ALIGN WITH EDGE OF CURTAIN WALL ROUGH OPENING/BRICK RETURN FACE WHERE APPLICABLE.
- 10 GRADE, REFER TO CIVIL DOCUMENTS
- 11 EXTERIOR WALL MOUNTED LIGHT FIXTURE, REFER TO ELECTRICAL CENTER LIGHTS ON PANEL BETWEEN PANEL VERTICAL REVEALS AND PANEL EDGE.



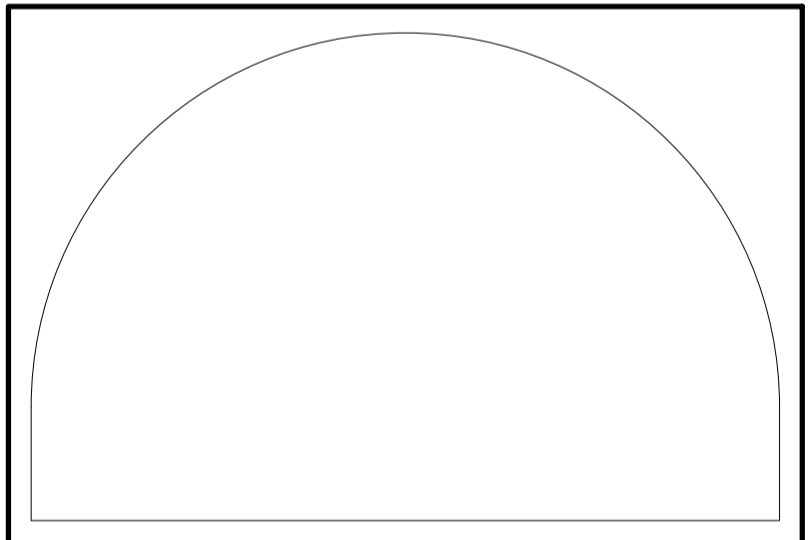
2 EAST ADDITION ELEVATION
A200 1:100



3 SOUTH ADDITION ELEVATION
A200 1:100



4 WEST ADDITION ELEVATION
A200 1:100



EDWARD J. CUHACI & ASSOCIATES ARCHITECTS Inc.
171 Slater St, Suite 100, Ottawa, Ontario, K1P 5H7
Fax: (613) 238-1944 Telephone: (613) 238-7135 E-mail: info@edcuhaci.com

PROJECT TITLE/TITRE DU PROJET
COLLÈGE CATHOLIQUE MER BLEUE - ADDITION
6401 RENAUD RD, OTTAWA, ON, K1W 0H8

CONSEIL DES ÉCOLES CATHOLIQUES DU CENTRE-EST
4000, RUE LABELLE, OTTAWA, ON K1J 1A1

DRAWING TITLE/TITRE DU DESSIN
SITE PLAN

| | | | |
|---------------------------|------------------|---------------|--------------|
| SCALE ÉCHELLE | PROJ. No 2237 | ISSUE No 1 | REV. No 0 |
| DRAWN BY DESSINÉ PAR | DRAWING/DESSIN | | |
| CHECKED BY VÉRIFIÉ PAR | TB/JJ | | |
| DATE | 2022 | | |

A200

FICHER ACAD FILE: 2237-A200 SPC.001