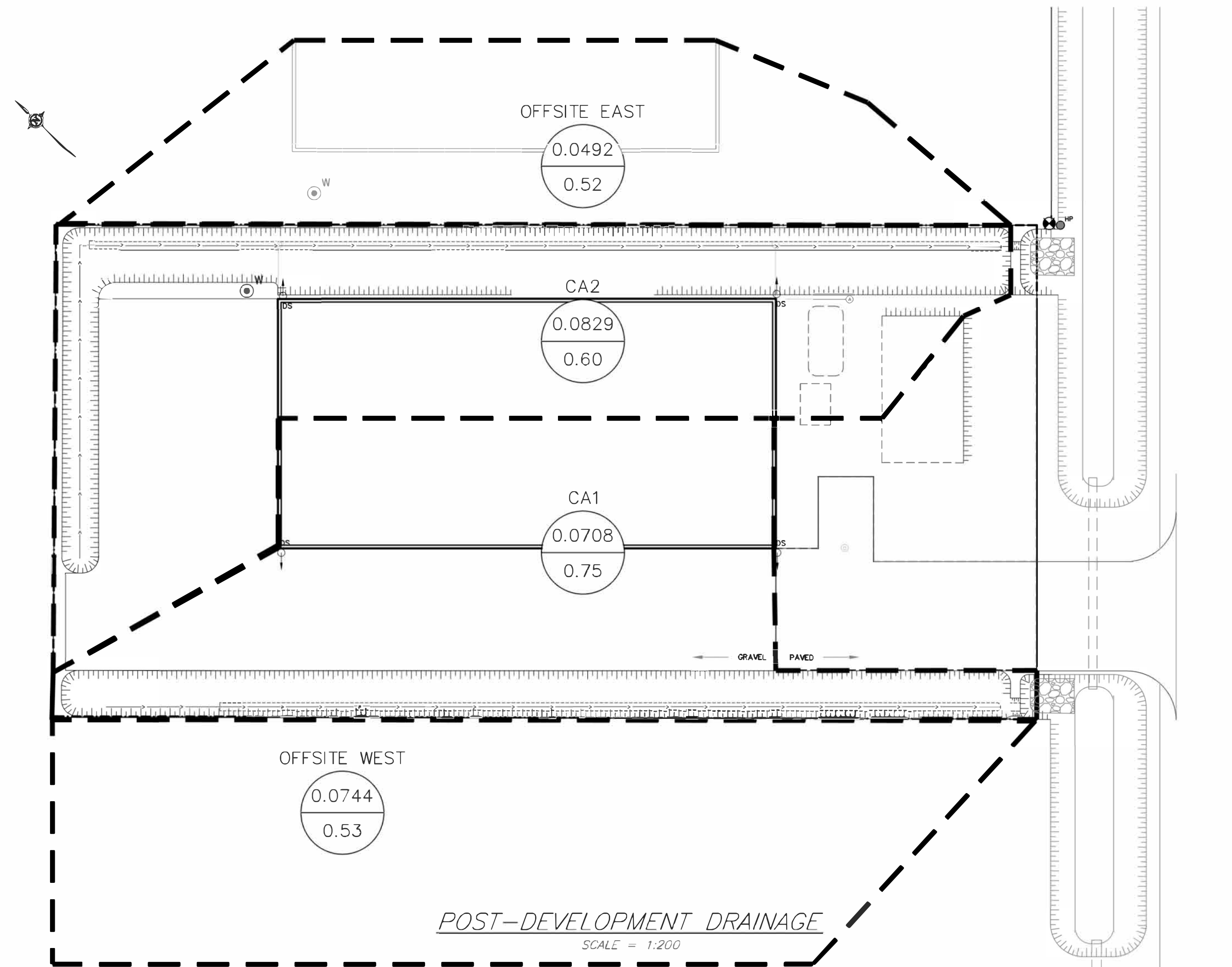


PRE-DEVELOPMENT DRAINAGE

SCALE = 1:200



POST-DEVELOPMENT DRAINAGE

SCALE = 1:200

APPROVED

By Cheryl McWilliams at 11:17 am, Apr 26, 2023

Cheryl McWilliams

CHERYL MCWILLIAMS
PLANNER
PLANNING, INFRASTRUCTURE & ECONOMIC
DEVELOPMENT DEPARTMENT, CITY OF OTTAWA

DRAWING NUMBER: 210430-SWM



SCALE: AS NOTED

LEGEND (STORM WATER MANAGEMENT)

- CONTROLLED
- 0.39
- 0.34
- CATCHMENT LABEL
- CATCHMENT AREA (HECTARES)
- RUNOFF COEFFICIENT
- CATCHMENT AREA BOUNDARY
- DIRECTION OF FLOW
- PROPERTY LINE
- TOP OF SLOPE
- CONTROLLED AREA
- UNCONTROLLED AREA
- DIRECTION OF FLOW

No.	REVISION	DATE	BY
4	Add City of Ottawa Plan and File Numbers	FEB 10, 2023	SD
3	LOWER A PORTION OF THE BOTTOM OF WEST SWALE 2m	JAN. 18, 2023	SD
2	REVISIONS PER 2nd REVIEW COMMENTS	NOV. 17, 2022	SD
1	REVISIONS PER 1st REVIEW COMMENTS	SEPT. 8, 2022	ML
0	ISSUED FOR SPC APPLICATION	AUG. 13, 2021	ML
#	REVISION ITEM / DESCRIPTION	REV. DATE	INT.

K Kollaard Associates
Engineers (613) 860-0923
info@kollaard.ca

P.O. BOX 189, 210 PRESCOTT ST.
KEMPTVILLE, ONTARIO
K0G 1J0 FAX (613) 258-0475
http://www.kollaard.ca

CLIENT:
CITY WYE'D ELECTRIC LTD (SCOTT WINCH)

PROJECT:
PROPOSED LIGHT INDUSTRIAL BUILDING

LOCATION:
140 REIS ROAD,
CARP, ON

	DESIGNED BY: ML	CHECKED BY: SD
	DRAWN BY: ML	APPROVED BY: SD
DATE: AUG. 11, 2021		KOLLAARD FILE NUMBER: 210430

DRAWING NUMBER: 210430-SWM

DRAWING NAME:
STORMWATER MANAGEMENT PLAN