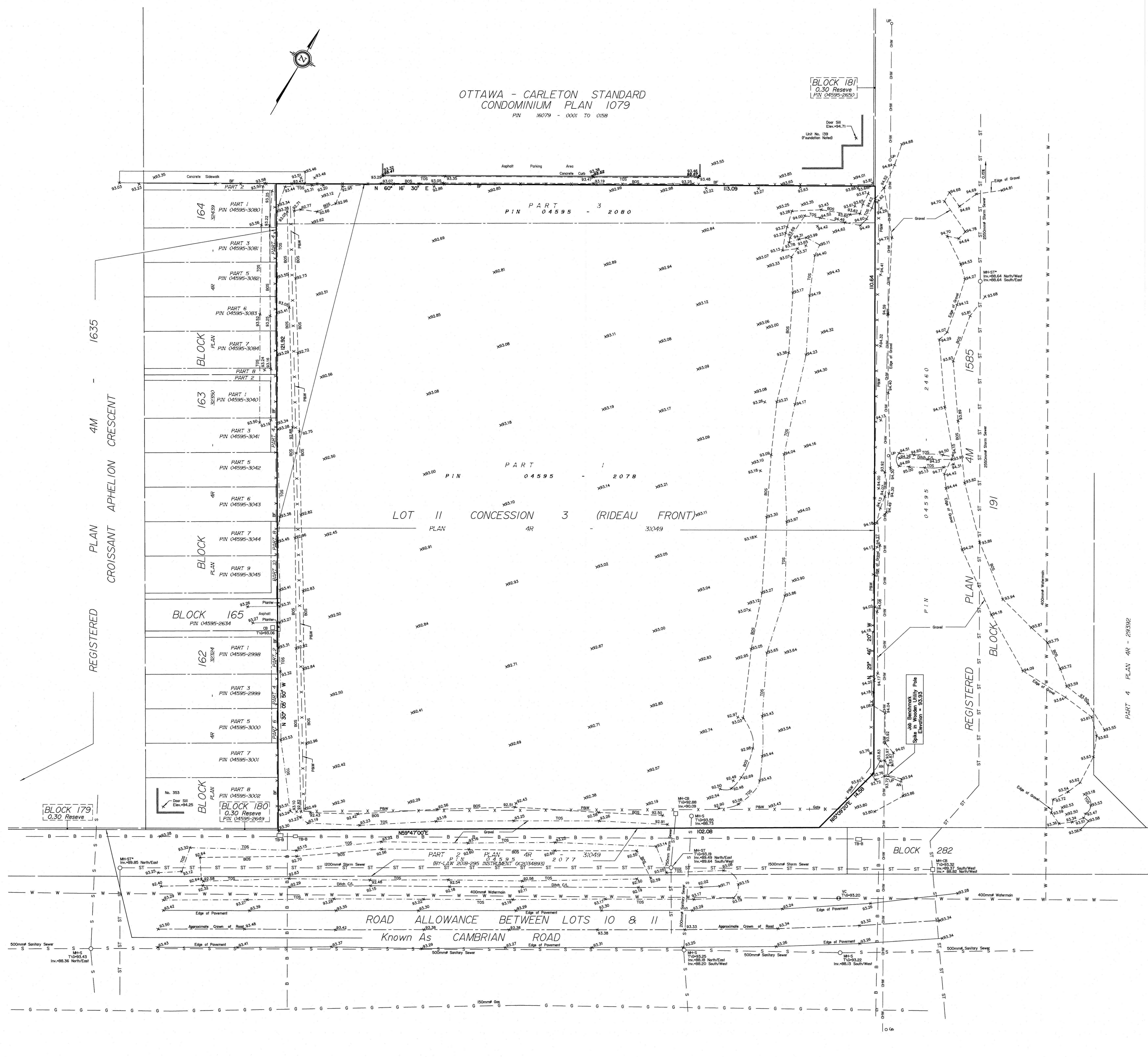


Oct. 21, 2022
 Date
 J. E. Anderson
 Ontario Land Surveyor

OTTAWA - CARLETON STANDARD
 CONDOMINIUM PLAN 1079
 PIN 16079 - 0001 TO 0158



Notes & Legend

- Denotes
- MH-ST Maintenance Hole (Storm Sewer)
 - MH-S Maintenance Hole (Sanitary)
 - ⊕ VC Valve Chamber (Watermain)
 - CB Catch Basin
 - ⊕ TB-B Bell Terminal Box
 - BF Board Fence
 - P&W Post and Wire Fence
 - UP Utility Pole
 - AN Anchor
 - OW Overhead Wires
 - ST Underground Storm Sewer
 - S Underground Sanitary Sewer
 - W Underground Water
 - B Underground Bell
 - ∅ Diameter
 - + 85.00 Location of Elevations
 - + 85.00 Top of Concrete Curb Elevation
 - C/L Centreline
 - Property Line
 - TOS Top of Slope
 - BOS Bottom of Slope

Boundary information compiled from Registered Plan 4M-1635
 and Plan 4R-31049
 SITE AREA = 13626 m²

ELEVATION NOTES
 1. Elevations shown are geoidetic and are referred to the CGVD28 geoidetic datum, derived from control monument No. 01668071 having an elevation of 89.742 metres.
 2. It is the responsibility of the user of this information to verify that the job benchmark has not been altered or disturbed and that it's relative elevation and description agrees with the information shown on this drawing.

UTILITY NOTES
 1. This drawing cannot be accepted as acknowledging all of the utilities and it will be the responsibility of the user to contact the respective utility authorities for confirmation.
 2. Only visible surface utilities were located.
 3. Underground utility data derived from City of Ottawa utility sheet reference CC-B-20 & CC-B-21.
 4. Sanitary and storm sewer grades and inverts were derived from City of Ottawa Plans Reference D07-16-16-0023 P1 Plan No. 17566 (Sheet 18 & 20).
 5. A field location of underground plant by the pertinent utility authority is mandatory before any work involving breaking ground, probing, excavating etc.
 6. Location of Storm and Sewer Manhole marked with * derived from City of Ottawa Plans Reference D07-16-16-0023 P1 Plan No. 17566 (Sheet 18 & 20)