

Distances shown on this plan are ground distances and can be converted to grid distances by multiplying by the combined scale factor of 0.999946.

Bearings are MTM grid, derived from simultaneous GPS observations from monument A to B, shown hereon, having a bearing of N21°36'40"W and are referred to the Central Meridian of MTM Zone 9 (76°30' West Longitude) NAD-83 (original).

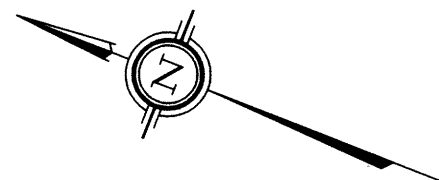
Coordinate values are to urban accuracy in accordance with O. Reg. 216/10.

. Point A Northing 5032298.85 Easting 372685.52  
 . Point B Northing 5032213.83 Easting 372719.20

Caution: Coordinates cannot, in themselves, be used to re-establish corners or boundaries shown on this plan.

CUMMINGS AVENUE (Formerly Dubeau Street)  
 (BY-LAW 75/67, INST. GL81387)

REGISTERED PLAN 217  
 PIN 04269 - 0129



I REQUIRE THIS PLAN TO BE DEPOSITED UNDER THE LAND TITLES ACT.

DATE: March 5/13

*V. Andrew Shelp*  
 V. ANDREW SHELPLEP  
 ONTARIO LAND SURVEYOR

PLAN 4R-26865

RECEIVED AND DEPOSITED DATE: March 5/13

*C. Holloway*  
 Representative For:  
 LAND REGISTRAR FOR THE  
 LAND TITLES DIVISION OF  
 OTTAWA-CARLETON NO. 4.

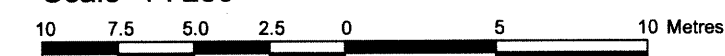
SCHEDULE			
PART	PART OF LOT	REGISTERED PLAN	ALL OF PIN
1			04265-0026
2	1	217	04265-0027

PLAN OF SURVEY OF

PART OF LOT 1  
 REGISTERED PLAN 217  
 CITY OF OTTAWA

Surveyed by Annis, O'Sullivan, Vollebek Ltd.

Scale 1:250



Metric

DISTANCES AND COORDINATES SHOWN ON THIS PLAN ARE IN METRES AND CAN BE CONVERTED TO FEET BY DIVIDING BY 0.3048.

Surveyor's Certificate

I CERTIFY THAT:

- This survey and plan are correct and in accordance with the Surveys Act, the Surveys Act, the Land Titles Act and the regulations made under them.
- The survey was completed on the 21st day of February, 2013.

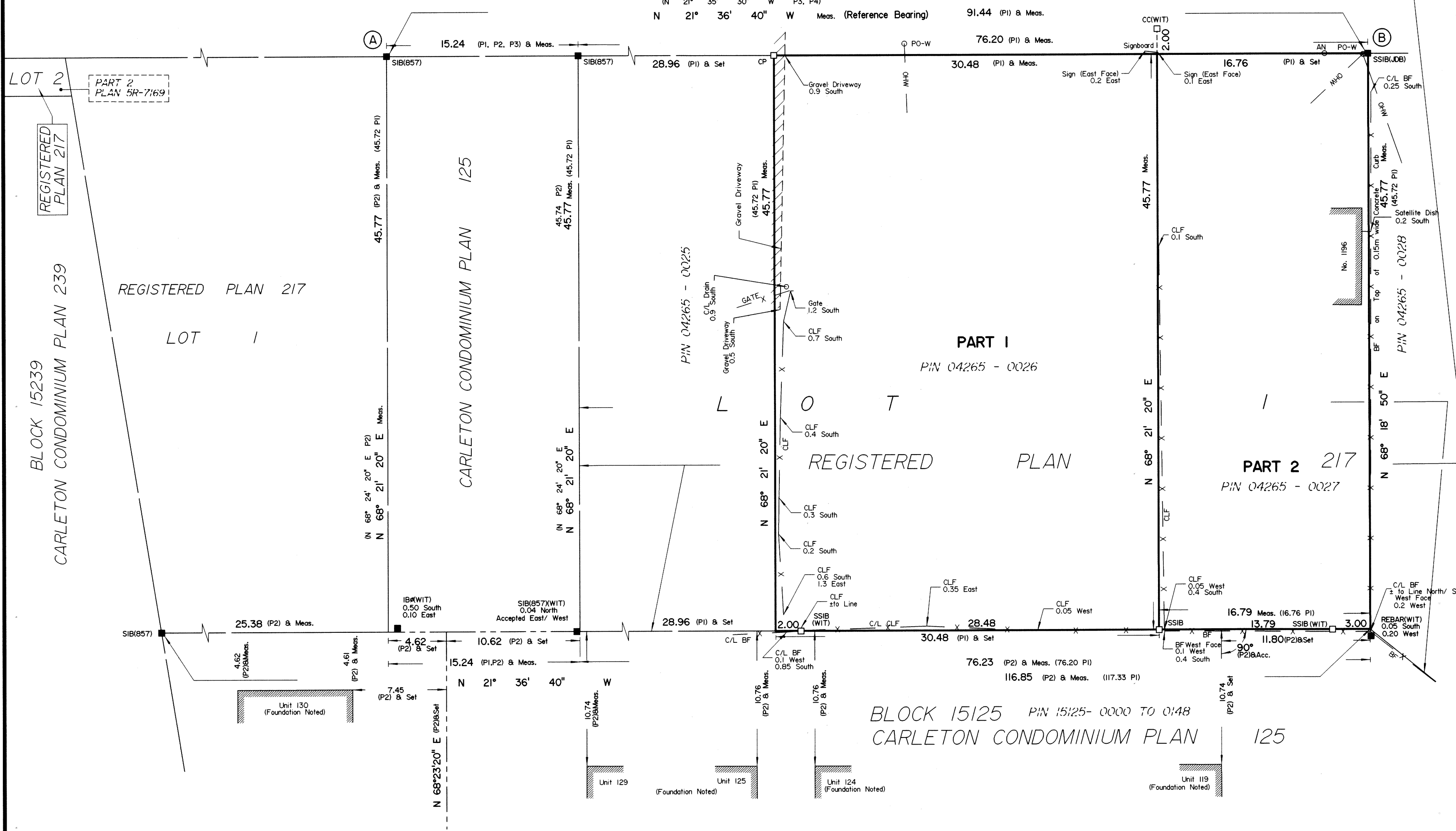
March 5/13  
 Date

*V. Andrew Shelp*  
 V. Andrew Shelp  
 Ontario Land Surveyor

Notes & Legend

- Denotes Survey Monument Found
- Survey Monument Planted
- SIB Standard Iron Bar
- SSIB Short Standard Iron Bar
- IB Iron Bar
- CC Cut Cross
- CP Concrete Pin
- (WIT) Witness
- (AOG) Annis, O'Sullivan, Vollebek Ltd.
- Meas. Measured
- (P1) (990) Plan December 3, 1963
- (P2) Carleton Condominium Plan No. 125
- (P3) Plan 5R-7169
- (P4) Carleton Condominium Plan No. 239
- BF Board Fence
- CLF Chain Link Fence
- C/L Centreline
- ow Overhead Wires
- PO-W Wooden Pole
- AN Anchor
- ∅ Round
- Prop. Proportioned

**ANNIS, O'SULLIVAN, VOLLEBEK LTD.**  
 14 Concourse Gate, Suite 500  
 Nepean, Ont. K2E 7S6  
 Phone: (613) 727-0850 / Fax: (613) 727-1079  
 Email: Nepean@aovltd.com



LOT 2  
 PART 2  
 PLAN 5R-7169

REGISTERED  
 PLAN 217

BLOCK 15239  
 CARLETON CONDOMINIUM PLAN 239

Unit 130  
 (Foundation Noted)

Unit 129  
 (Foundation Noted)

Unit 125  
 (Foundation Noted)

Unit 124  
 (Foundation Noted)

Unit 119  
 (Foundation Noted)