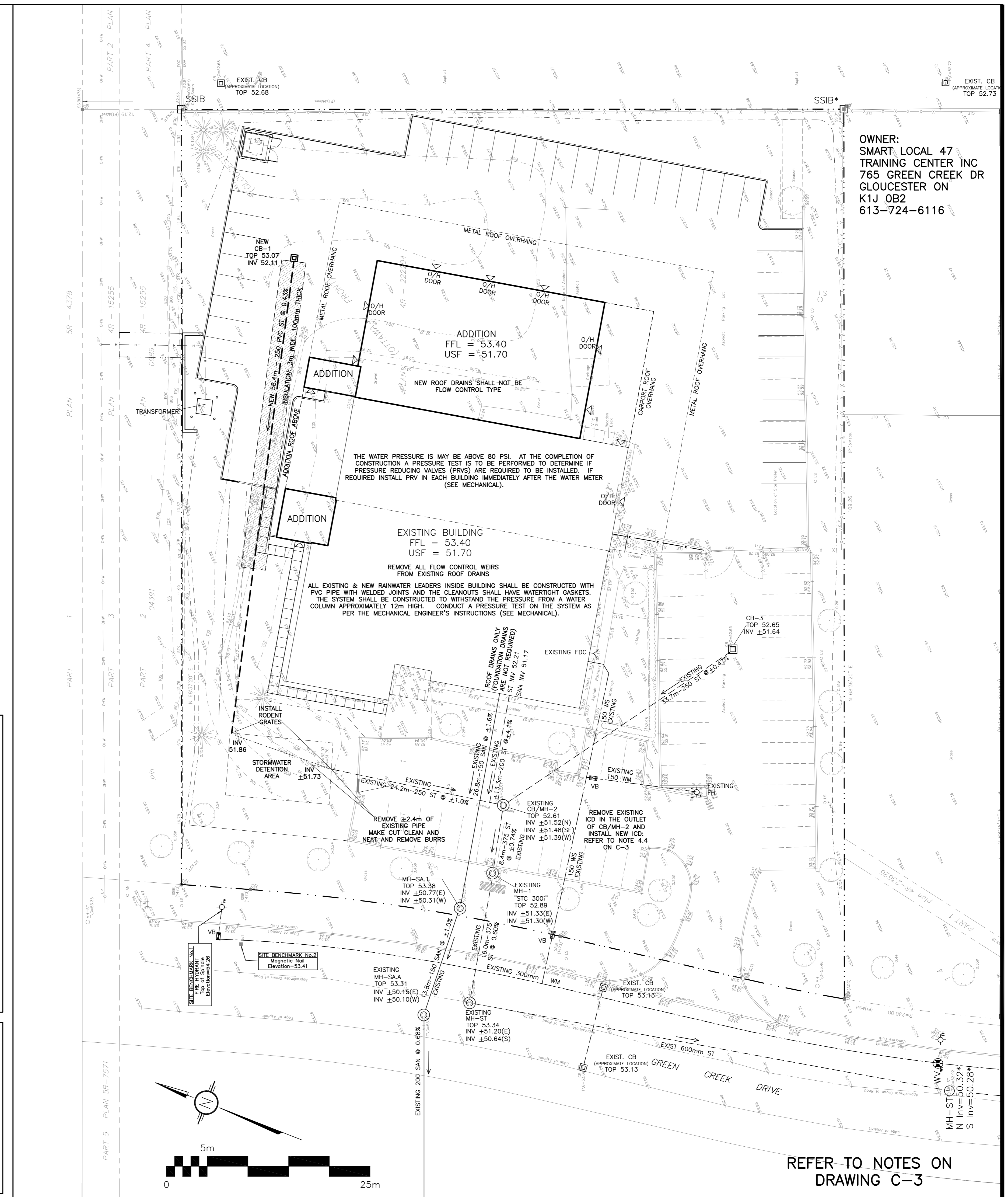
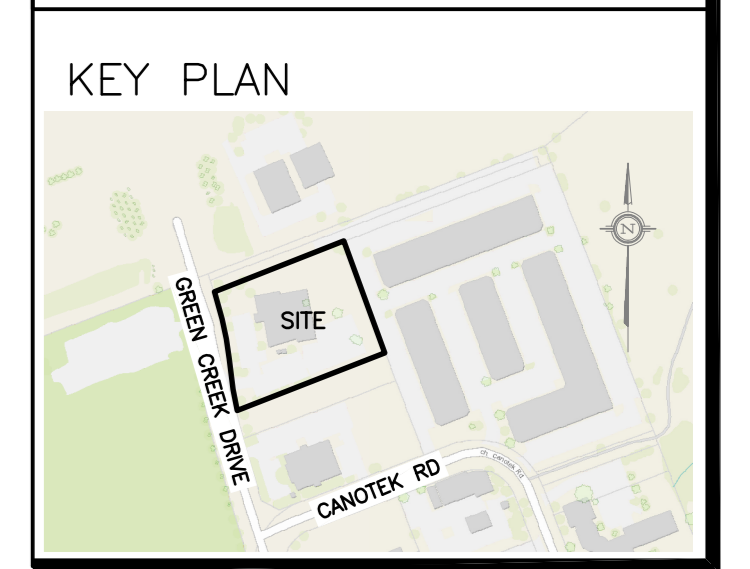


| CATCH-BASIN & MANHOLE SCHEDULE |       |             |                               |                 |                  |  |
|--------------------------------|-------|-------------|-------------------------------|-----------------|------------------|--|
| REF                            | TOP   | SIZE        | TYPE                          | INVERT AT INLET | INVERT AT OUTLET | NOTES  |
| STORM SEWER                    |       |             |                               |                 |                  |  |
| CB-1                           | 53.07 | 600 x 600mm | PRE-CAST CONCRETE CATCH-BASIN | -               | 52.11            | TO OPSD 705.010 & CITY OF OTTAWA STANDARDS - FRAME & COVER TO CITY OF OTTAWA DRAWING No. S19.1 |



| DRAWING LEGEND |                            |
|----------------|----------------------------|
| CB             | CATCH BASIN                |
| MH             | MANHOLE                    |
| CB/MH          | CATCH BASIN/MANHOLE        |
| SPL            | SPRINGLINE OF PIPE         |
| INV            | INVERT OF PIPE             |
| SAN            | SANITARY SEWER             |
| ST             | STORM SEWER                |
| WS/WM          | WATER SERVICE/WATERMAIN    |
| CS             | CURB STOP & STANDPOST      |
| VB             | VALVE & VALVE BOX          |
| FH             | FIRE HYDRANT               |
| FDC            | FIRE DEPARTMENT CONNECTION |
| WM             | WATER METER                |
| +67.89         | EXISTING GRADE ELEVATION   |
| +67.89         | PROPOSED GRADE ELEVATION   |
| 2%             | EXISTING SLOPE OF GRADE    |
| 2%             | PROPOSED SLOPE OF GRADE    |
| →              | EMERGENCY OVERLAND FLOW    |
| T.O.S.         | TOP OF SLOPE               |
| B.O.S.         | BOTTOM OF SLOPE            |
| ---            | CENTERLINE OF SWALE        |
| ---            | PROPERTY LINE              |
| ---            | SILT FENCE BARRIER         |
| ---            | 150mm CURB/DEPRESSED CURB  |
| ---            | LIGHT-DUTY PAVEMENT        |
| ---            | HEAVY-DUTY PAVEMENT        |
| ---            | CONCRETE                   |
| ---            | LANDSCAPE                  |
| F.F.L.         | FIRST FLOOR ELEVATION      |
| T.O.F.         | TOP OF FOUNDATION          |
| U.S.F.         | UNDERSIDE OF FOOTING       |



| No. | DATE      | REVISION                   |
|-----|-----------|----------------------------|
| 5   | APR 21-23 | RE-ISSUED FOR APPROVAL     |
| 4   | JUN 30-22 | RE-ISSUED FOR APPROVAL     |
| 3   | MAR 26-21 | ISSUED FOR APPROVAL        |
| 2   | DEC 4-20  | ISSUED FOR BUILDING PERMIT |
| 1   | SEP 10-20 | ISSUED FOR COORDINATION    |

**D. B. GRAY ENGINEERING INC.**  
 Stormwater Management - Grading & Drainage - Storm & Sanitary Sewers - Watermain  
 700 Long Point Circle 613-425-8044  
 Ottawa, Ontario d.gray@dbgrayengineering.com

Project  
**SMART LOCAL 47 TRAINING CENTRE**  
 765 GREEN CREEK DRIVE  
 OTTAWA, ONTARIO

Drawing Title  
**SITE SERVICING PLAN**

Engineer's Seal  
  
 Drawn D.B.G.  
 Hor. Scale 1:250  
 Vert. Scale  
 Date SEP 10-20  
 Job 20014  
 Drawing No.  
**C-1**  
 of 3  
 NOT VALID UNLESS SIGNED & DATED

REFER TO NOTES ON DRAWING C-3

D07-12-21-0235 #18689