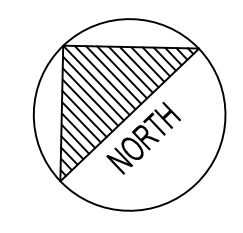
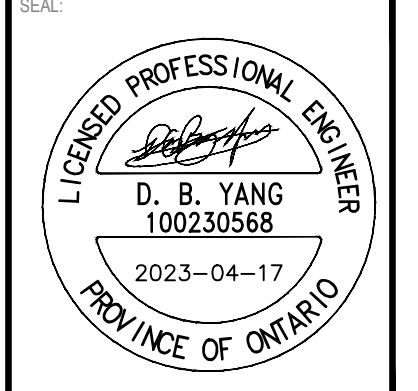




ARCHITECTURE 49

1345 ROSEMOUNT AVENUE
CORNWALL, ONTARIO, CANADA K6J 3E5
TEL: 613-933-5602 | FAX: 613-936-0335 | ARCHITECTURE49.COM



864 LADY ELLEN PLACE,
OTTAWA



DISCLAIMER: THIS DRAWING AND DESIGN IS COPYRIGHT PROTECTED WHICH SHALL NOT BE USED, REPRODUCED OR REVISED WITHOUT WRITTEN PERMISSION BY WSP. THE CONTRACTOR SHALL CHECK AND VERIFY ALL DIMENSIONS AND UTILITY LOCATIONS AND REPORT ALL ERRORS AND OMISSIONS PRIOR TO COMMENCING WORK. THIS DRAWING IS NOT TO BE SCALED.

ISSUED FOR	REVISION	DATE	DESCRIPTION
2		2023-04-17	REVISED AS PER CITY COMMENTS
1		2022-12-16	ISSUED FOR SPA

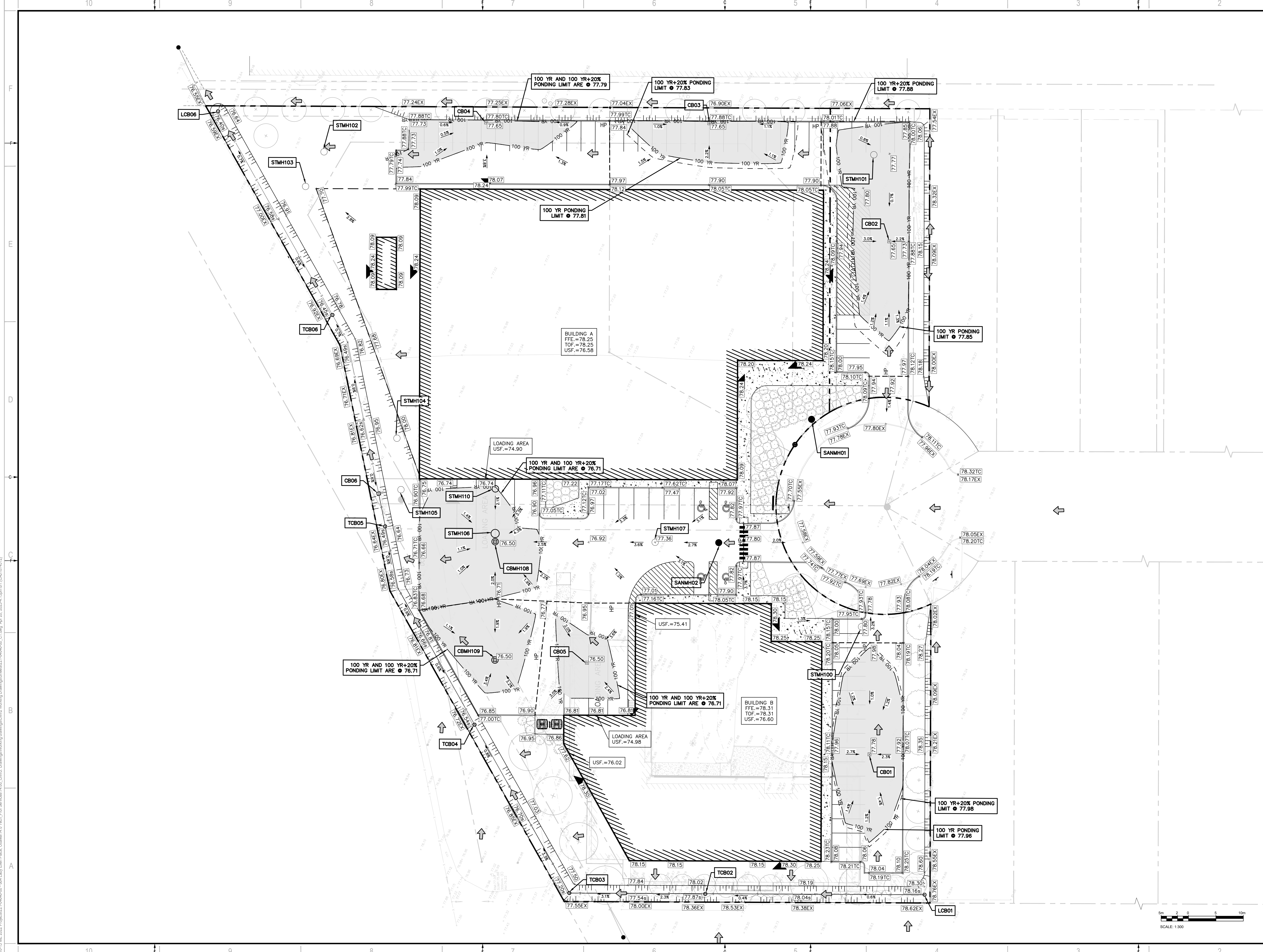
PROJECT NO:	221-04646-00	DATE:	APRIL 2023
ORIGINAL SCALE:	1:300	IF THIS BAR IS NOT 25mm LONG, ADJUST YOUR PLOTTING SCALE.	
DESIGNED BY:	DY		
DRAWN BY:	JT		
CHECKED BY:	DY		

DISCIPLINE:	CIVIL
TITLE:	REMOVAL PLAN
SHEET NUMBER:	C02
SHEET #:	2 OF 6
ISSUE:	REVISED AS PER CITY COMMENTS
DATE OF:	2023-04-17
REV #:	0

V:\10-13-ME-2022-Projects\221-04646-00 - 864 Lady Ellen Place, Ottawa\14.0 Tech Prod Services\14.00_Civil3_Drawing\Working Drawings\Sheet\221-04646-00_C1.dwg, Apr 17, 2023, 10:50am BY: CAUT070423

D07-12-22-0175

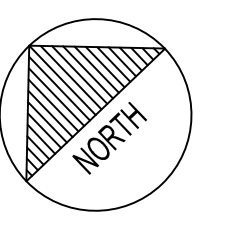
#18904



2011 QUEENVIEW DR.
OTTAWA, ONTARIO
CANADA K2B 8K2
T: 613-829-2900
F: 613-829-8299
WWW.WSP.COM

ARCHITECTURE 49

1345 ROSSEMOUNT AVENUE
CORNWALL, ONTARIO, CANADA K6J 3E5
TEL: 613-933-5602 | FAX: 613-936-0335 | ARCHITECTURE49.COM



**864 LADY ELLEN PLACE,
OTTAWA**

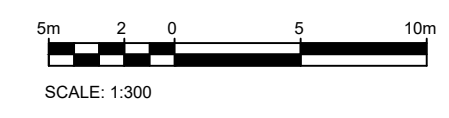


DISCLAIMER: THIS DRAWING AND DESIGN IS COPYRIGHT PROTECTED WHICH SHALL NOT BE USED, REPRODUCED OR REVISED WITHOUT WRITTEN PERMISSION BY WSP. THE CONTRACTOR SHALL CHECK AND VERIFY ALL DIMENSIONS AND UTILITY LOCATIONS AND REPORT ALL ERRORS AND OMISSIONS PRIOR TO COMMENCING WORK. THIS DRAWING IS NOT TO BE SCALED.

ISSUED FOR	REVISION	DATE	DESCRIPTION
2		2023-04-17	REVISED AS PER CITY COMMENTS
1		2022-12-16	ISSUED FOR SPA

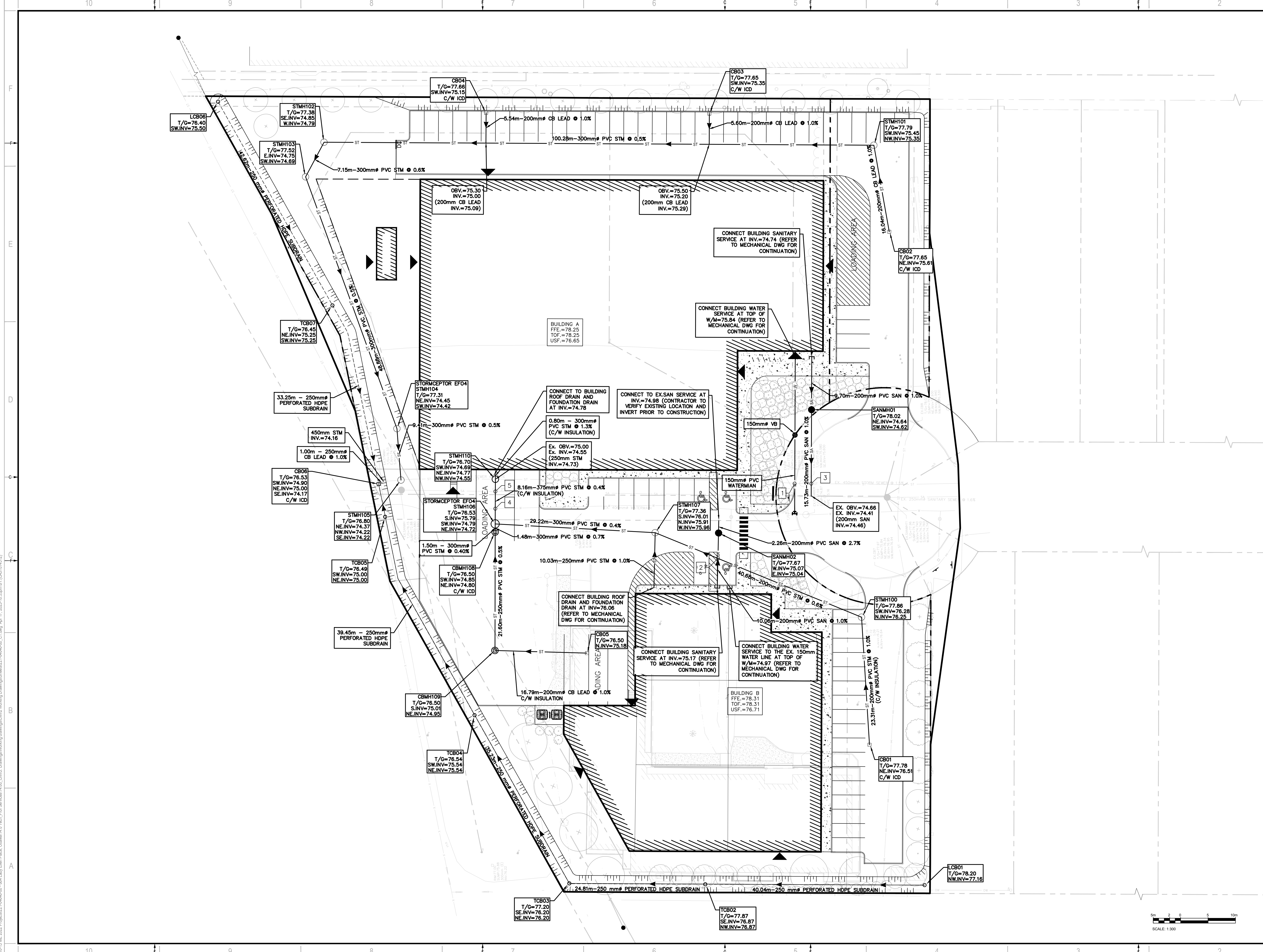
PROJECT NO:	221-04646-00	DATE:	APRIL 2023
ORIGINAL SCALE:	1:300	IF THIS BAR IS NOT 25mm LONG, ADJUST YOUR PLOTTING SCALE.	
DESIGNED BY:	DY		
DRAWN BY:	JT		
CHECKED BY:	DY		
DISCIPLINE:	CIVIL		

TITLE:	GRADING PLAN		
SHEET NUMBER:	C03		
SHEET #:	3	OF	6
ISSUE:	REVISED AS PER CITY COMMENTS		
DATE OF:	2023-04-17	REV #:	0



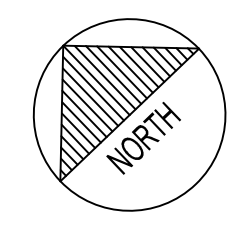
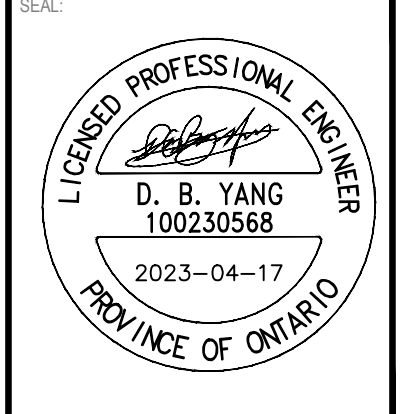
V:\10-13 ME 2022 Project\221-04646-00 - 864 Lady Ellen Place, Ottawa\14.0 Tech - Final Services\14.00_Civil3_Drawing\Working Drawings\Sheet\221-04646-00_C1.dwg Apr 20, 2023 4:13pm BY CAUT074512

D07-12-22-0175



ARCHITECTURE 49

1345 ROSSEMOUNT AVENUE
CORNWALL, ONTARIO, CANADA K6J 3E5
TEL: 613-933-5602 | FAX: 613-936-0335 | ARCHITECTURE49.COM



864 LADY ELLEN PLACE,
OTTAWA



DISCLAIMER: THIS DRAWING AND DESIGN IS COPYRIGHT PROTECTED WHICH SHALL NOT BE USED, REPRODUCED OR REVISED WITHOUT WRITTEN PERMISSION BY WSP. THE CONTRACTOR SHALL CHECK AND VERIFY ALL DIMENSIONS AND UTILITY LOCATIONS AND REPORT ALL ERRORS AND OMISSIONS PRIOR TO COMMENCING WORK. THIS DRAWING IS NOT TO BE SCALED.

IS	RE	DATE	DESCRIPTION
2		2023-04-17	REVISED AS PER CITY COMMENTS
1		2022-12-16	ISSUED FOR SPA

PROJECT NO:	221-04646-00	DATE:	APRIL 2023
ORIGINAL SCALE:	1:300	IF THIS BAR IS NOT 25mm LONG, ADJUST YOUR PLOTTING SCALE.	
DESIGNED BY:	DY		
DRAWN BY:	JT		
CHECKED BY:	DY		
DISCIPLINE:	CIVIL		

TITLE:	SERVICING PLAN		
SHEET NUMBER:	C04		
SHEET #:	4	OF	6
ISSUE:	REVISED AS PER CITY COMMENTS		
DATE OF:	2023-04-17	REV #:	0

V:\10-13-13-2022-10-53pm BY: CAJ\0101921

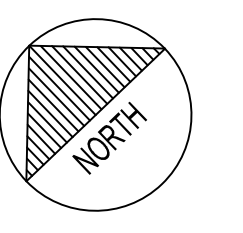
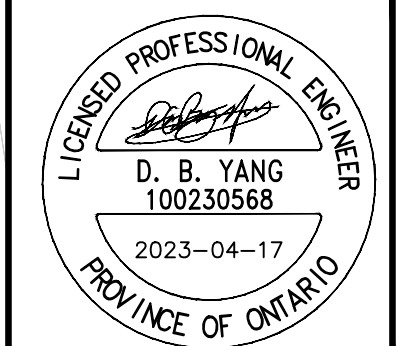
#18904

Drainage Area	CB NO.	Total (Ha)	Grass C=0.20	Asphalt C=0.90	Roof C=1.00	Cavg	100YR Pounding Depth	100YR Pounding Area	100YR Pounding Volume	100YR Pounding Depth+20% Depth	100YR+20% Pounding Area	100YR+20% Pounding Volume
S-101	CB02	0.085	0.012	0.073			0.80	0.20	330.00	29.00	0.23	375.00
S-102	CB03	0.049		0.049			0.90	0.16	162.00	13.00	0.18	188.00
S-103	CB04	0.048		0.048			0.90	0.14	165.00	12.00	0.14	165.00
S-104	CBMH108	0.133		0.133			0.90	0.21	373.00	37.00	0.21	373.00
S-105	CBMH109	0.035		0.035			0.90	0.21	223.00	21.00	0.21	223.00
S-106	CB05	0.035		0.035			0.90	0.21	130.00	12.00	0.21	130.00
S-107	CB01	0.082	0.020	0.062			0.73	0.18	350.00	23.00	0.20	365.00
S-109	CB06	0.202	0.200	0.002			0.21					
S-BLDG A		0.405			0.405	1.00						
S-BLDG B		0.175			0.175	1.00						
Uncontrolled												
S-108a		0.002	0.002				0.20					
S-108b		0.025	0.025				0.20					
S-110		0.004	0.004				0.20					
S-111		0.076	0.038	0.038			0.55					
Total		1.640	0.557	0.503	0.580	0.70		1733	147.00		1819	166.00



ARCHITECTURE 49

1345 ROSSEMOUNT AVENUE
CORNWALL, ONTARIO, CANADA K6J 3E5
TEL: 613-933-5602 | FAX: 613-936-0335 | ARCHITECTURE49.COM



864 LADY ELLEN PLACE,
OTTAWA

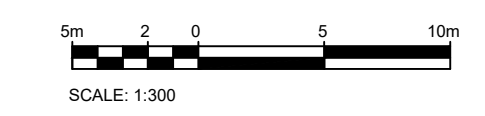
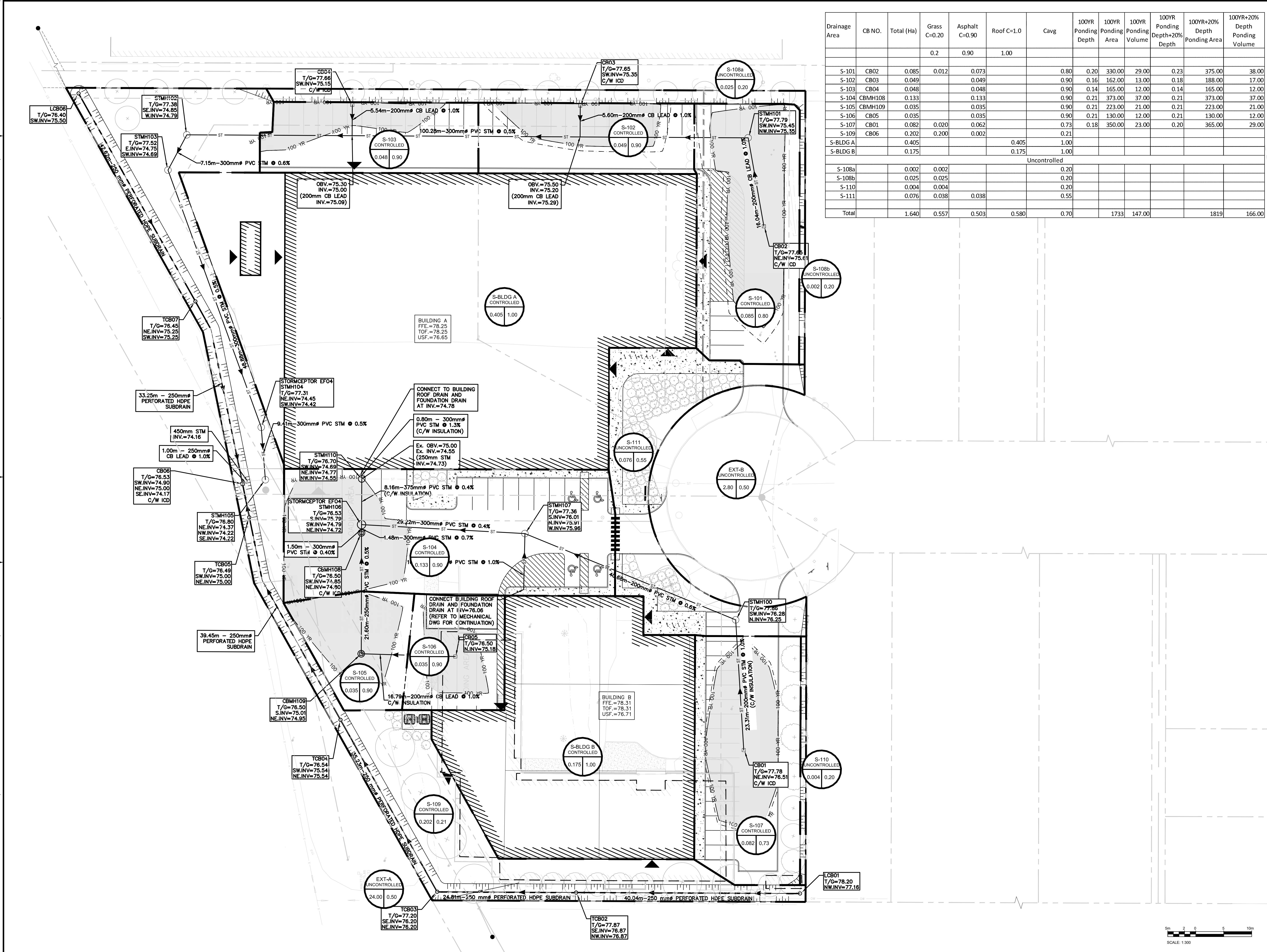


DISCLAIMER: THIS DRAWING AND DESIGN IS COPYRIGHT PROTECTED WHICH SHALL NOT BE USED, REPRODUCED OR REVISED WITHOUT WRITTEN PERMISSION BY WSP. THE CONTRACTOR SHALL CHECK AND VERIFY ALL DIMENSIONS AND UTILITY LOCATIONS AND REPORT ALL ERRORS AND OMISSIONS PRIOR TO COMMENCING WORK. THIS DRAWING IS NOT TO BE SCALED.

ISSUED FOR	REVISION	DATE	DESCRIPTION
2		2023-04-17	REVISED AS PER CITY COMMENTS
1		2022-12-16	ISSUED FOR SPA

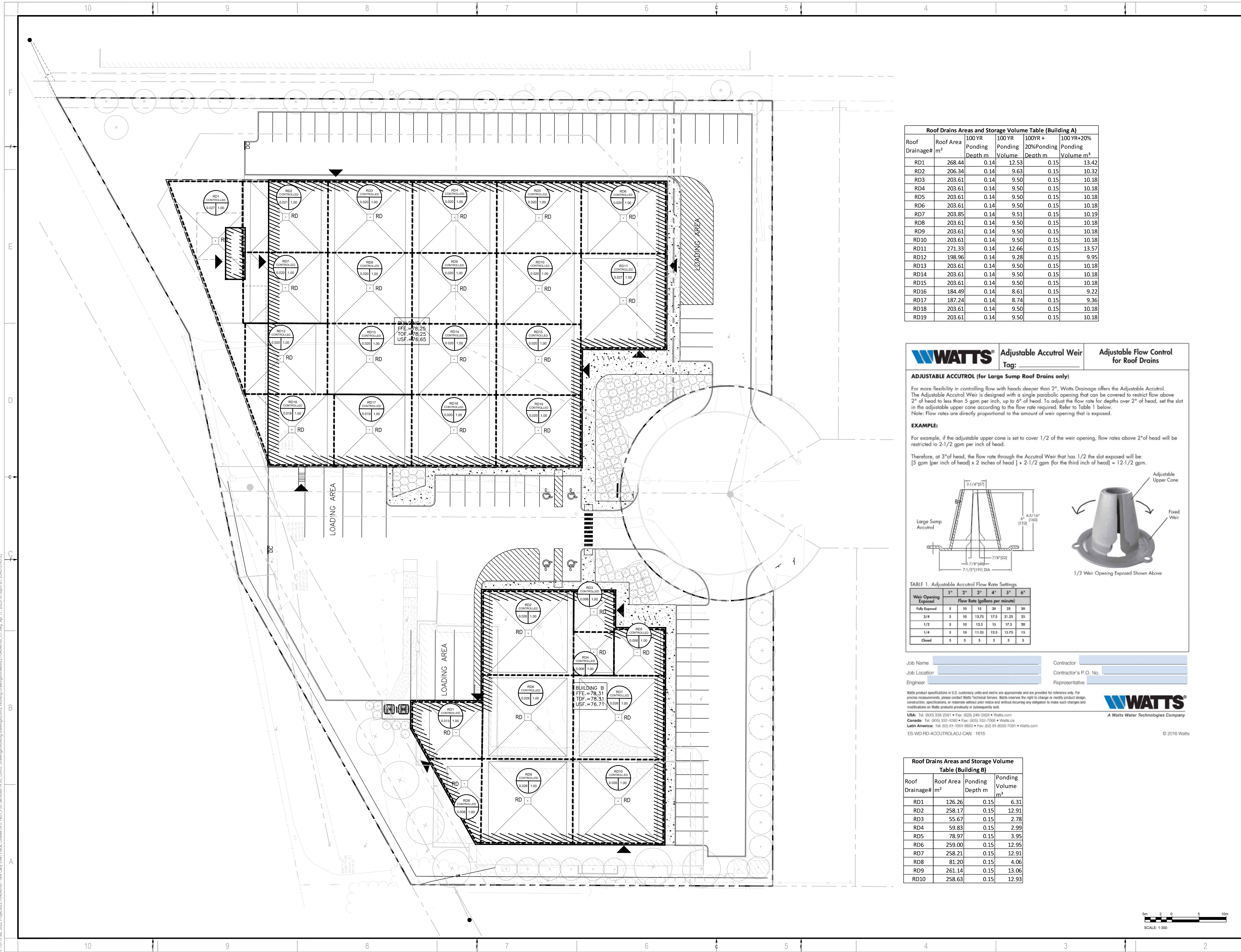
PROJECT NO:	221-04646-00	DATE:	APRIL 2023
ORIGINAL SCALE:	1:300	IF THIS BAR IS NOT 25mm LONG, ADJUST YOUR PLOTTING SCALE.	
DESIGNED BY:	DY		
DRAWN BY:	JT		
CHECKED BY:	DY		
DISCIPLINE:	CIVIL		

TITLE:	STORM DRAINAGE AREA PLAN		
SHEET NUMBER:	C05		
SHEET #:	5	OF	6
ISSUE:	REVISED AS PER CITY COMMENTS		
DATE OF:	2023-04-17	REV #:	0



V:\10-13-ME-2022-Projects\221-04646-00 - 864 Lady Ellen Place, Ottawa\14.0 Tech Prod Services\14.00_Civil\Drawings\Working Drawings\Sheet\221-04646-00_C1.dwg Apr 17 2023 10:57am BY:CAJ/DY/03/23

D07-12-22-0175



Roof Drains Areas and Storage Volume Table (Building A)

Roof Drainage#	Roof Area m ²	100 YR Ponding Depth m	100 YR Ponding Volume	100YR+ 20%Ponding Depth m	100YR+20% Ponding Volume m ³
RD1	268.44	0.14	12.53	0.15	13.42
RD2	206.34	0.14	9.63	0.15	10.32
RD3	203.61	0.14	9.50	0.15	10.18
RD4	203.61	0.14	9.50	0.15	10.18
RD5	203.61	0.14	9.50	0.15	10.18
RD6	203.61	0.14	9.50	0.15	10.18
RD7	203.85	0.14	9.51	0.15	10.19
RD8	203.61	0.14	9.50	0.15	10.18
RD9	203.61	0.14	9.50	0.15	10.18
RD10	203.61	0.14	9.50	0.15	10.18
RD11	271.33	0.14	12.66	0.15	13.57
RD12	198.96	0.14	9.28	0.15	9.95
RD13	203.61	0.14	9.50	0.15	10.18
RD14	203.61	0.14	9.50	0.15	10.18
RD15	203.61	0.14	9.50	0.15	10.18
RD16	184.49	0.14	8.61	0.15	9.22
RD17	187.24	0.14	8.74	0.15	9.36
RD18	203.61	0.14	9.50	0.15	10.18
RD19	203.61	0.14	9.50	0.15	10.18

WATTS Adjustable Accutrol Weir Adjustable Flow Control for Roof Drains

ADJUSTABLE ACCUTROL (for Large Sump Roof Drains only)

For more flexibility in controlling flow with heads deeper than 2", Watts Drainage offers the Adjustable Accutrol. The Adjustable Accutrol Weir is designed with a single parabolic opening that can be covered to restrict flow above 2" of head to less than 5 gpm per inch, up to 6" of head. To adjust the flow rate for depths over 2" of head, set the slot in the adjustable upper cone according to the flow rate required. Refer to Table 1 below.

Note: Flow rates are directly proportional to the amount of weir opening that is exposed.

EXAMPLE:

For example, if the adjustable upper cone is set to cover 1/2 of the weir opening, flow rates above 2" of head will be restricted to 2-1/2 gpm per inch of head.

Therefore, at 3" of head, the flow rate through the Accutrol Weir that has 1/2 the slot exposed will be: [5 gpm (per inch of head) x 2 inches of head] + 2-1/2 gpm (for the third inch of head) = 12-1/2 gpm.

TABLE 1 Adjustable Accutrol Flow Rate Settings

Weir Opening Exposed	Flow Rate (gallons per minute)					
	1"	2"	3"	4"	5"	6"
Fully Exposed	5	10	15	20	25	30
3/4	5	10	13.75	17.5	21.25	25
1/2	5	10	12.5	15	17.5	20
1/4	5	10	11.25	12.5	13.75	15
Closed	5	5	5	5	5	5

Job Name: _____ Contractor: _____
 Job Location: _____ Contractor's P.O. No.: _____
 Engineer: _____ Representative: _____

Watts product specifications in U.S. customary units and metric are approximate and are provided for reference only. For precise measurements, please contact Watts Technical Service. Watts reserves the right to change or modify product design, construction, specifications, or materials without prior notice and without incurring any obligation to make such changes and modifications to Watts products previously or subsequently sold.

USA: Tel: (800) 338-2581 • Fax: (828) 248-0820 • Watts.com
 Canada: Tel: (905) 332-4050 • Fax: (905) 332-7068 • Watts.ca
 Latin America: Tel: (52) 81-1001-8600 • Fax: (52) 81-8000-7091 • Watts.com

ES-WD-RD-ACCUTROLADJ-CAN 1615 © 2016 Watts

Roof Drains Areas and Storage Volume Table (Building B)

Roof Drainage#	Roof Area m ²	Ponding Depth m	Ponding Volume m ³
RD1	126.26	0.15	6.31
RD2	258.17	0.15	12.91
RD3	55.67	0.15	2.78
RD4	59.83	0.15	2.99
RD5	78.97	0.15	3.95
RD6	259.00	0.15	12.95
RD7	258.21	0.15	12.91
RD8	81.20	0.15	4.06
RD9	261.14	0.15	13.06
RD10	258.63	0.15	12.93

wsp
 2011 QUEENSVIEW DR.
 OTTAWA, ONTARIO
 CANADA K2B 8K2
 T: 613-829-2900
 F: 613-829-8299
 WWW.WSP.COM

ARCHITECTURE | 49
 1345 ROSSEMOUNT AVENUE
 CORNWALL, ONTARIO, CANADA K6J 3E5
 TEL: 613-933-5602 | FAX: 613-936-0335 | ARCHITECTURE49.COM

CLIENT: **ACCESS STORAGE**

864 LADY ELLEN PLACE,
 OTTAWA

2023-04-17

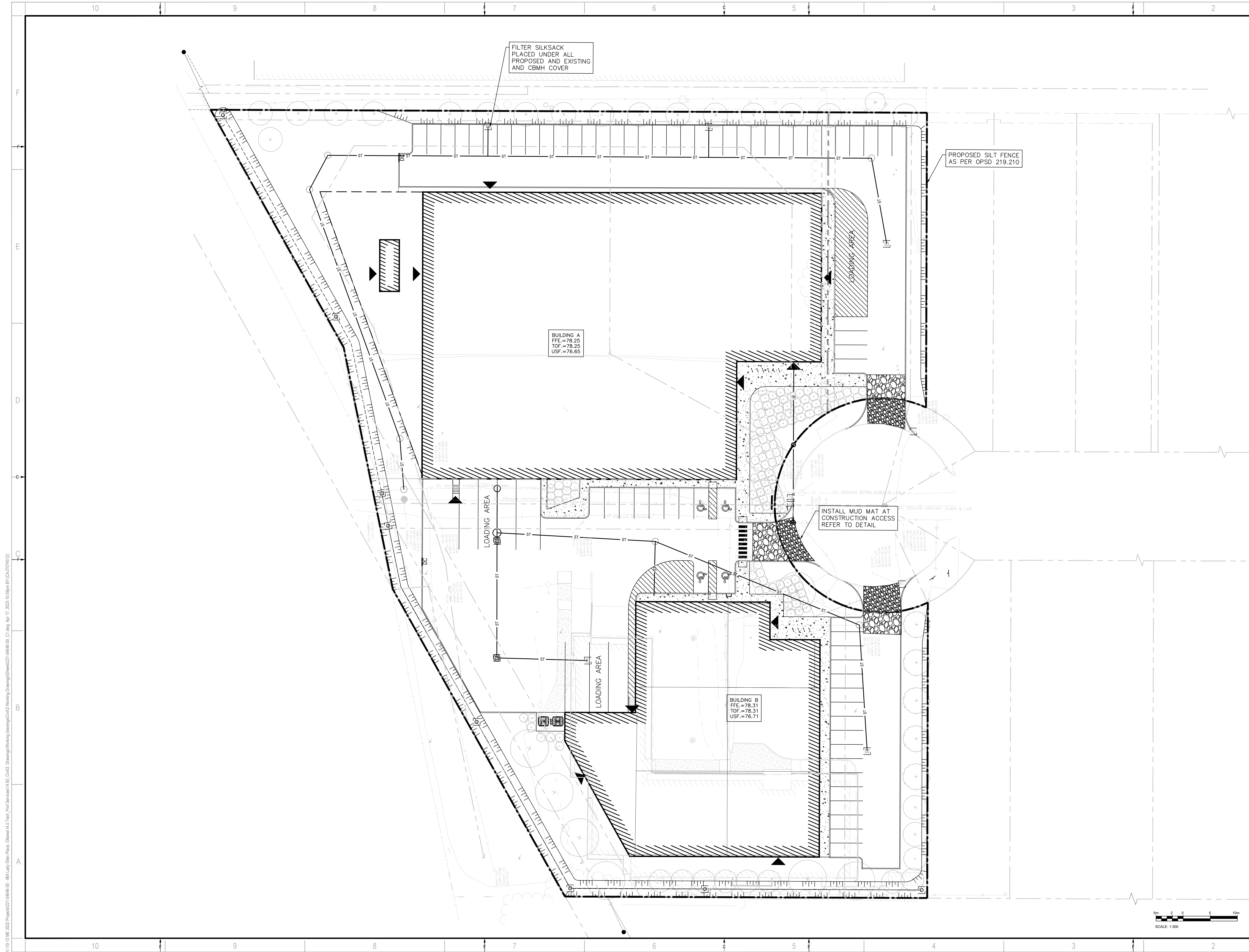
REVISIONS:

NO.	DATE	DESCRIPTION
2	2023-04-17	REVISED AS PER CITY COMMENTS
1	2022-12-16	ISSUED FOR SPA

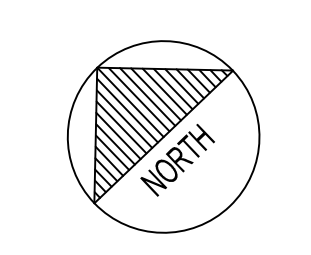
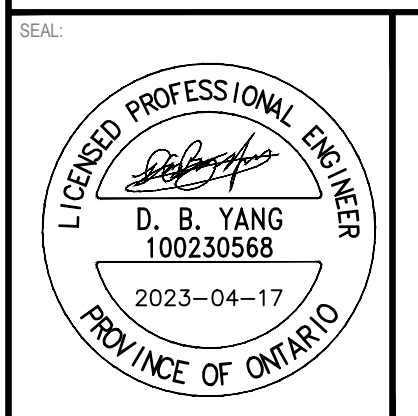
PROJECT NO: 221-04646-00 DATE: APRIL 2023
 ORIGINAL SCALE: 1:300
 DESIGNED BY: DY
 DRAWN BY: JT
 CHECKED BY: DY
 DISCIPLINE: CIVIL
 TITLE: ROOF DRAINAGE AREA PLAN
 SHEET NUMBER: C05A
 SHEET # 5 OF 6
 ISSUE: REVISED AS PER CITY COMMENTS
 DATE OF: 2023-04-17

V:\10-13.ME.2022.Projects\221-04646-00 - 864 Lady Ellen Place, Ottawa\14.0 Tech_Plan_Services\14.00_Civil\3_Drawing\Working Drawings\Sheet\221-04646-00_C1.dwg Apr 17, 2023 10:58pm BY: CAUT070323

D07-12-22-0175



ARCHITECTURE 49
 1345 ROSSEMOUNT AVENUE
 CORNWALL, ONTARIO, CANADA K6J 3E5
 TEL: 613-933-5602 | FAX: 613-936-0335 | ARCHITECTURE49.COM



864 LADY ELLEN PLACE,
 OTTAWA



DISCLAIMER: THIS DRAWING AND DESIGN IS COPYRIGHT PROTECTED WHICH SHALL NOT BE USED, REPRODUCED OR REVISED WITHOUT WRITTEN PERMISSION BY WSP. THE CONTRACTOR SHALL CHECK AND VERIFY ALL DIMENSIONS AND UTILITY LOCATIONS AND REPORT ALL ERRORS AND OMISSIONS PRIOR TO COMMENCING WORK. THIS DRAWING IS NOT TO BE SCALED.

IS	RE	DATE	DESCRIPTION
2		2023-04-17	REVISED AS PER CITY COMMENTS
1		2022-12-16	ISSUED FOR SPA

PROJECT NO:	221-04646-00	DATE:	APRIL 2023
ORIGINAL SCALE:	1:300	IF THIS BAR IS NOT 25mm LONG, ADJUST YOUR PLOTTING SCALE.	
DESIGNED BY:	DY		
DRAWN BY:	JT		
CHECKED BY:	DY		

DISCIPLINE:	CIVIL		
TITLE:	EROSION AND SEDIMENT CONTROL PLAN		
SHEET NUMBER:	C06		
SHEET #:	6	OF	6
ISSUE:	REVISED AS PER CITY COMMENTS		REV #
DATE OF:	2023-04-17		0

V:\10-13 ME 2022 Project\221-04646-00 - 864 Lady Ellen Place, Ottawa\14.0 Tech Prod Services\14.00_Civil_Drawing\Working drawings\06\14.00_C06.dwg, Apr 17, 2023, 10:58pm BY: CAUT070323