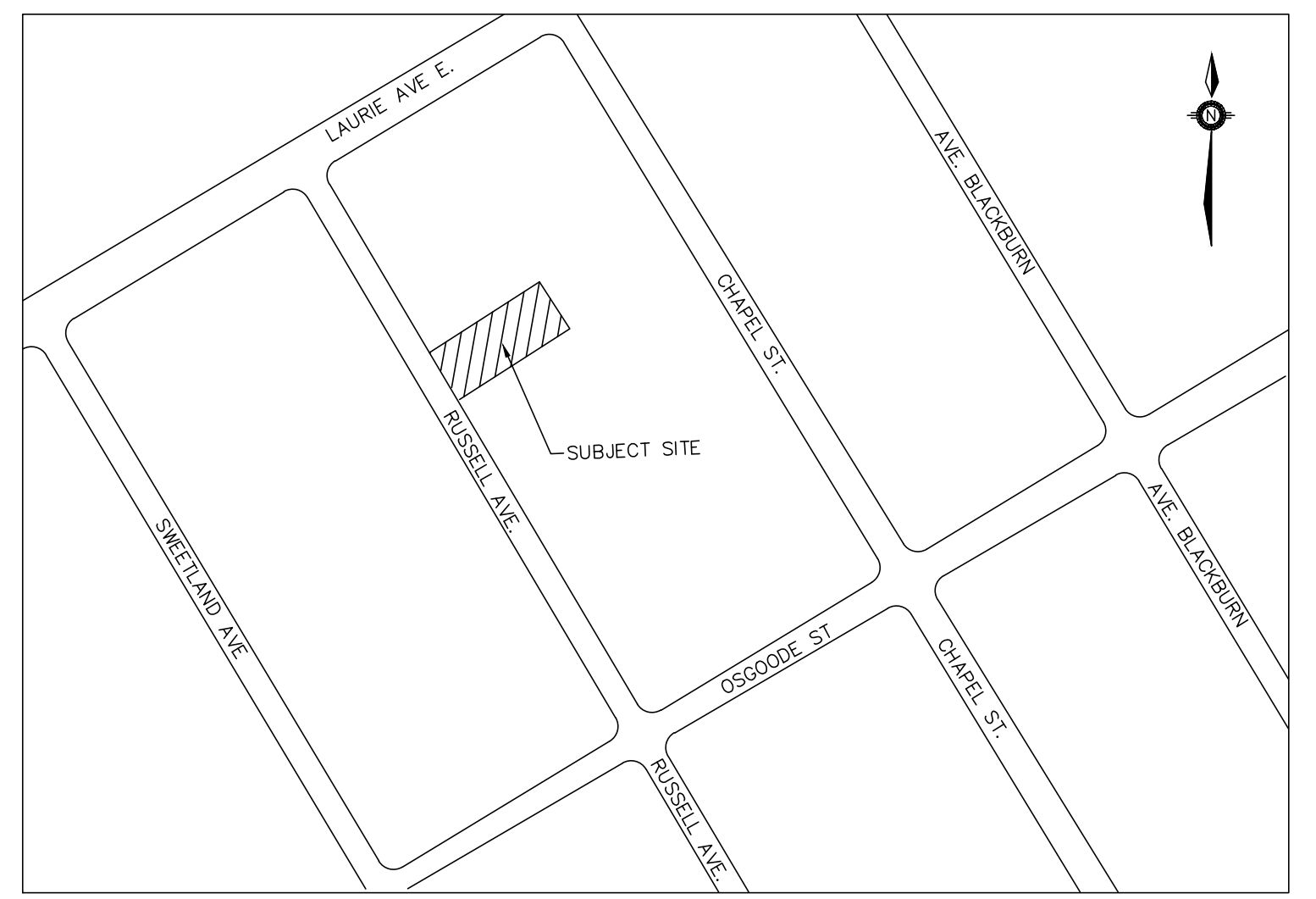
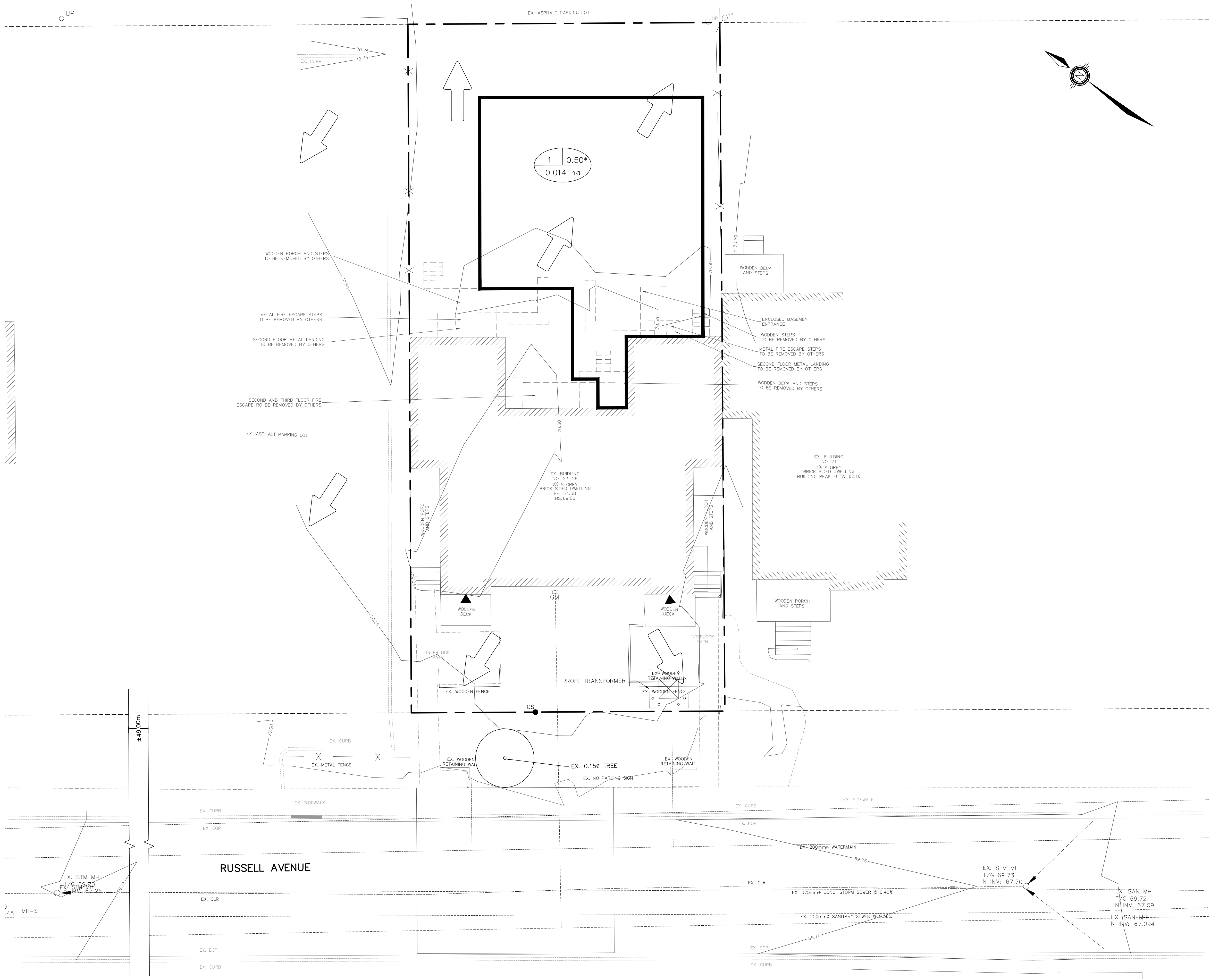
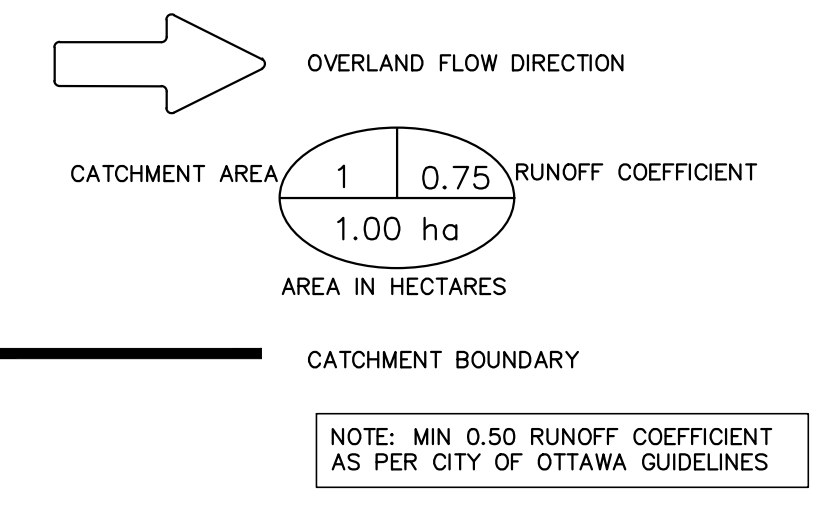


C:\Users\jwells\AppData\Local\Temp\AcPublish...18604A\22030 - Base Sub 3.dwg Layout: STM-1 Plotted Apr 12, 2023 @ 11:33am by wells @ PEARSON ENGINEERING LTD.



KEY MAP  
N.T.S.

LEGEND



RUSSELL AVENUE

**BENCHMARK**  
MAGNETIC NAIL IN UTILITY POLE LOCATED AT THE NORTH EAST CORNER OF THE PROPOSED SITE.  
ELEVATION: 70.98

NO.	REVISION NOTE	DATE	BY
02.	AS PER 2ND SUBMISSION COMMENTS	04/12/23	NW
01.	AS PER CITY COMMENTS	01/11/23	JM



SMART LIVING PROPERTIES  
29 RUSSELL AVE,  
CITY OF OTTAWA

PRE-DEVELOPMENT STORM  
CATCHMENT PLAN



DESIGNED BY	NW	HORIZ SCALE	1:100	PROJECT #	22030
DRAWN BY	JM	VERT SCALE	N/A	DRAWING #	STM-1
CHECKED BY	MWD	DATE	MAY 2022	REVISION #	1