

METRIC
DISTANCES AND ELEVATIONS SHOWN ON THIS PLAN ARE IN METRES
AND CAN BE CONVERTED TO FEET BY DIVIDING BY 0.3048

APPROVED
By Molly Smith at 3:30 pm, Apr 21, 2023

Molly Smith
MOLLY SMITH
PLANNER II
PLANNING, REAL ESTATE & ECONOMIC DEVELOPMENT
DEPARTMENT, CITY OF OTTAWA

TOPOGRAPHIC SURVEY OF
PART OF LOT 31, CONCESSION 10,
PART OF LOT 32, CONCESSION 11
AND
PART OF THE ROAD ALLOWANCE BETWEEN
CONCESSIONS 10 & 11
(CLOSED BY-LAW 23-71, INST. CT140597)
GEOGRAPHIC TOWNSHIP OF GOULBOURN
NOW CITY OF OTTAWA

SCALE 1 : 250
0 5 10 20 25 metres

FAIRHALL, MOFFATT & WOODLAND LIMITED
ONTARIO LAND SURVEYORS

- ELEVATION NOTES**
- ELEVATIONS SHOWN HEREON ARE REFERRED TO GEODETIC DATUM (CGVD28).
 - ELEVATIONS FOR MANHOLE COVERS AND CATCH BASINS HAVE TO BE INDEPENDENTLY CONFIRMED BEFORE THEY CAN BE ACCEPTED FOR FINAL DESIGN OR CONSTRUCTION PURPOSES.
 - IT IS THE RESPONSIBILITY OF THE USER OF THIS INFORMATION TO VERIFY THAT THE JOB BENCHMARKS HAVE NOT BEEN ALTERED OR DISTURBED AND THAT THEIR RELATIVE ELEVATION AND DESCRIPTION AGREE WITH THE INFORMATION SHOWN ON THIS DRAWING.

- UTILITY NOTES**
- THIS DRAWING CANNOT BE ACCEPTED AS ACKNOWLEDGING ALL OF THE UNDERGROUND UTILITIES AND IT WILL BE THE RESPONSIBILITY OF THE USER TO CONTACT THE RESPECTIVE UTILITY AUTHORITIES FOR CONFIRMATION OR LOCATION.
 - UNDERGROUND UTILITIES, AS REPORTED ON THIS DRAWING, ARE BASED ON AN ACTUAL 'FIELD LOCATE' BY THE RESPECTIVE UTILITY AGENCIES BUT HAVE BEEN COMPILED FROM DATA OBTAINED FROM THE FOLLOWING SOURCES:
a) CITY OF OTTAWA PUBLIC UTILITY REGISTRY
b) UNDERGROUND SERVICE LOCATORS USL-1
 - BEFORE ANY WORK INVOLVING PROBING, EXCAVATING, ETC., A FIELD LOCATION OF UNDERGROUND PLANT BY THE PERTINENT UTILITY AUTHORITY IS MANDATORY.

- NOTES**
- BEARINGS ARE GRID, DERIVED FROM WESTERLY LIMIT OF PARTS 30 AND 32 SHOWN ON PLAN SR-10105 HAVING A BEARING OF N 10° 45' 50" W AND ARE REFERRED TO THE CENTRAL MERIDIAN, 76°30' W LONGITUDE MTM ZONE 8, NAD83 ORIGINAL.
 - DISTANCES ARE GROUND AND CAN BE CONVERTED TO GRID BY MULTIPLYING BY THE COMBINED SCALE FACTOR 0.999919.
 - REVISION: JUNE 07, 2018 - ADDITIONAL UNDERGROUND SERVICES ON THE PROPERTY.
 - REVISION: SEPTEMBER 08, 2022 - UPDATED PLAN TO REFLECT CHANGES TO PARKING LOT.

LEGEND

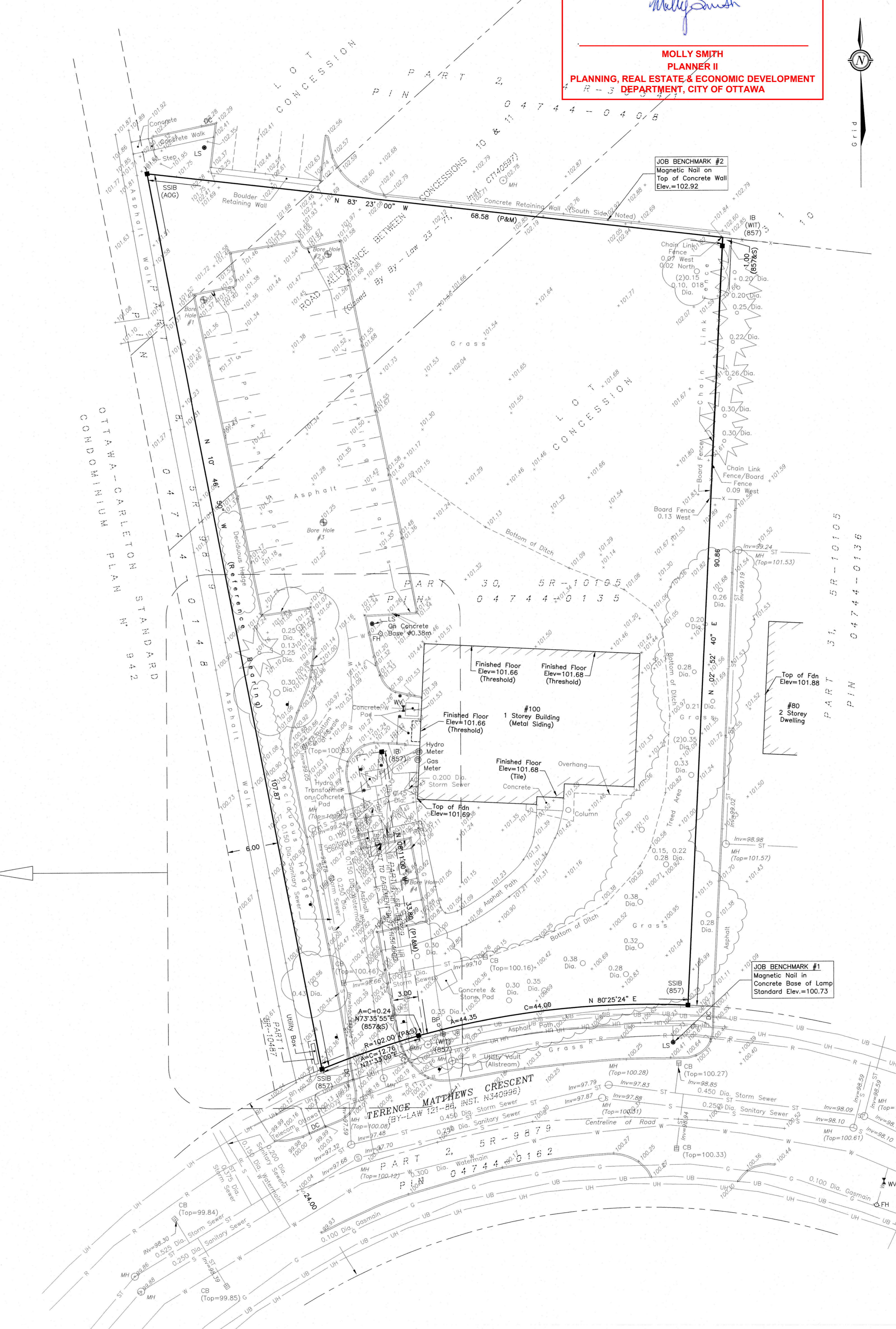
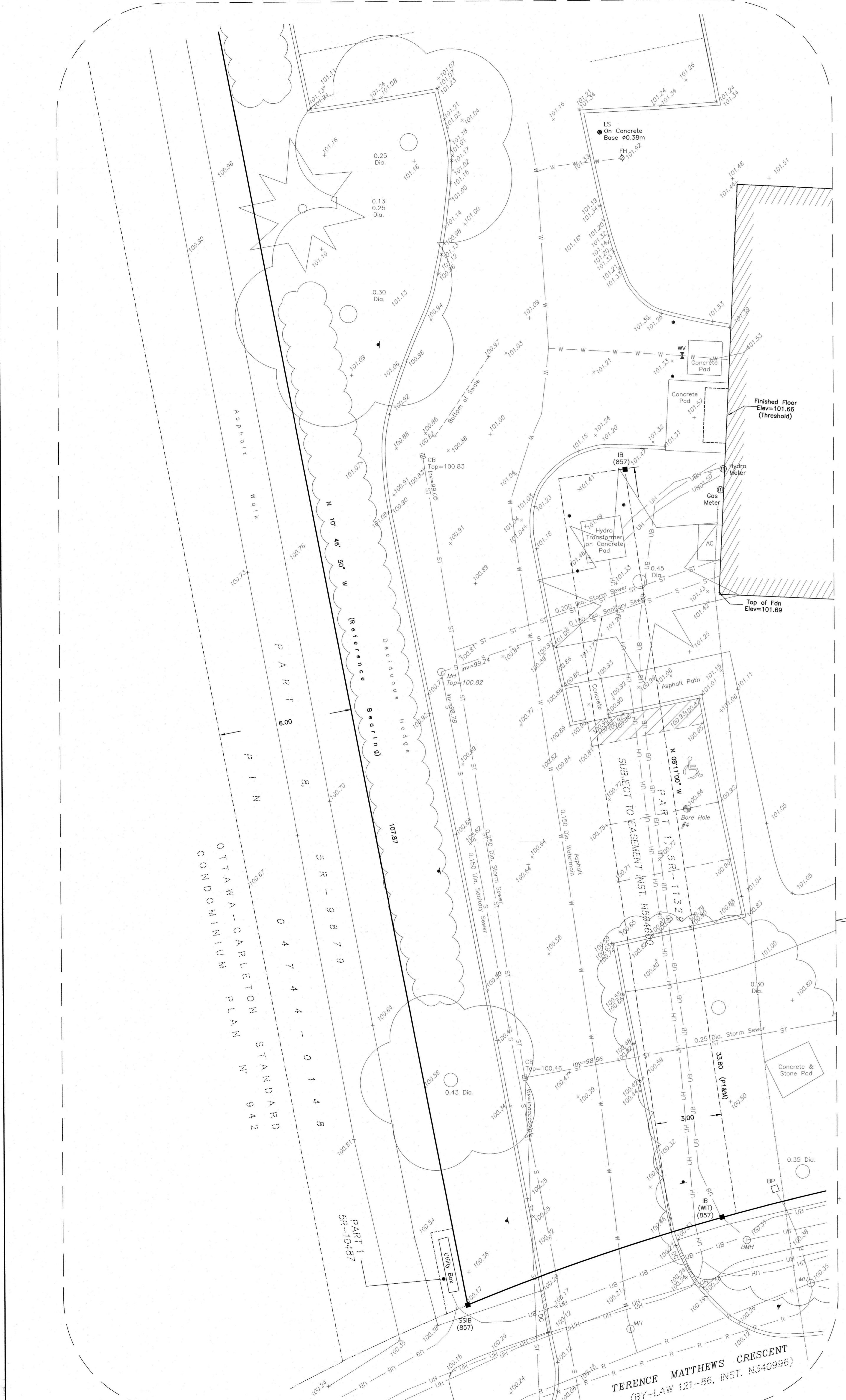
■	SURVEY MONUMENT FOUND	---	OVERHEAD UTILITY WIRES
SIB	STANDARD IRON BAR	---	UNDERGROUND HYDRO
SSIB	SHORT STANDARD IRON BAR	---	UNDERGROUND BELL
IB	IRON BAR	---	GAS MAIN
(P)	PLAN SR-10105	---	ROGERS COMMUNICATION
(P1)	PLAN SR-11329	---	STORM SEWER
(S)	SET	---	SANITARY SEWER
(M)	MEASURED	---	CURB
(857)	FAIRHALL, MOFFATT & WOODLAND LIMITED, O.L.S. (REF. 318 - 10 GOULBOURN)		
(AOG)	ANNIS, O'SULLIVAN, VOLLEBEKK LTD., O.L.S.		
(SU)	SOURCE UNKNOWN		
(WIT)	WITNESS		
PIN	PROPERTY IDENTIFIER NUMBER		
(FDN)	FOUNDATION		
DIA.	DIAMETER		
INV.	INVERT		
DC	DEPRESSED CURB		
CB	CATCH BASIN		
MH	MANHOLE		
LS	LAMP STANDARD		
UP	UTILITY POLE		
BP	BELL PEDESTAL		
WV	WATER VALVE		
FH	FIRE HYDRANT		
---	GUY WIRE AND ANCHOR		
●	BOLLARD		
▲	SIGN		
★	CONIFEROUS TREE		
○	DECIDUOUS TREE		
---	WATERMAIN		

SURVEYOR'S CERTIFICATE

I CERTIFY THAT:
1. THIS SURVEY AND PLAN ARE CORRECT AND IN ACCORDANCE WITH THE SURVEYS ACT, THE SURVEYORS ACT, THE LAND TITLES ACT AND THE REGULATIONS MADE UNDER THEM.
2. THE SURVEY WAS COMPLETED ON AUGUST 27, 2022.

2022/09/12
DATE

JOHN H. GUTRI
ONTARIO LAND SURVEYOR



© COPYRIGHT 2022. REPRODUCTION, ALTERATION OR DISTRIBUTION OF THIS PLAN WITHOUT THE WRITTEN CONSENT OF FAIRHALL, MOFFATT & WOODLAND LIMITED IS PROHIBITED.

SCALE 1 : 100
0 1 2 3 4 5 10 metres

ASSOCIATION OF ONTARIO
LAND SURVEYORS
PLAN SUBMISSION FORM
2056650

THIS PLAN IS NOT VALID
UNLESS IT IS AN EMBOSSED
ORIGINAL COPY
ISSUED BY THE SURVEYOR
REGISTERED IN THE PROVINCE OF ONTARIO
REGISTRATION NO. 1028-198297-29 (B)

JOB No.
A C 2 2 7 0 0
E 354050, N 5016671

Fairhall
Moffatt &
Woodland
LIMITED
OTTAWA
Ontario Land Surveyors
Surveying and Land Information Services
100-600 TERRY FOX DRIVE, KANATA, ONTARIO K2L 4B6
TEL: (613) 591-2290 FAX: (613) 591-1495
www.fmw.com

REFERENCE No.
318 (a)-10 GOULBOURN
S:\085\AC227\DWG\085P2022
TP_AC227.dwg (ns)