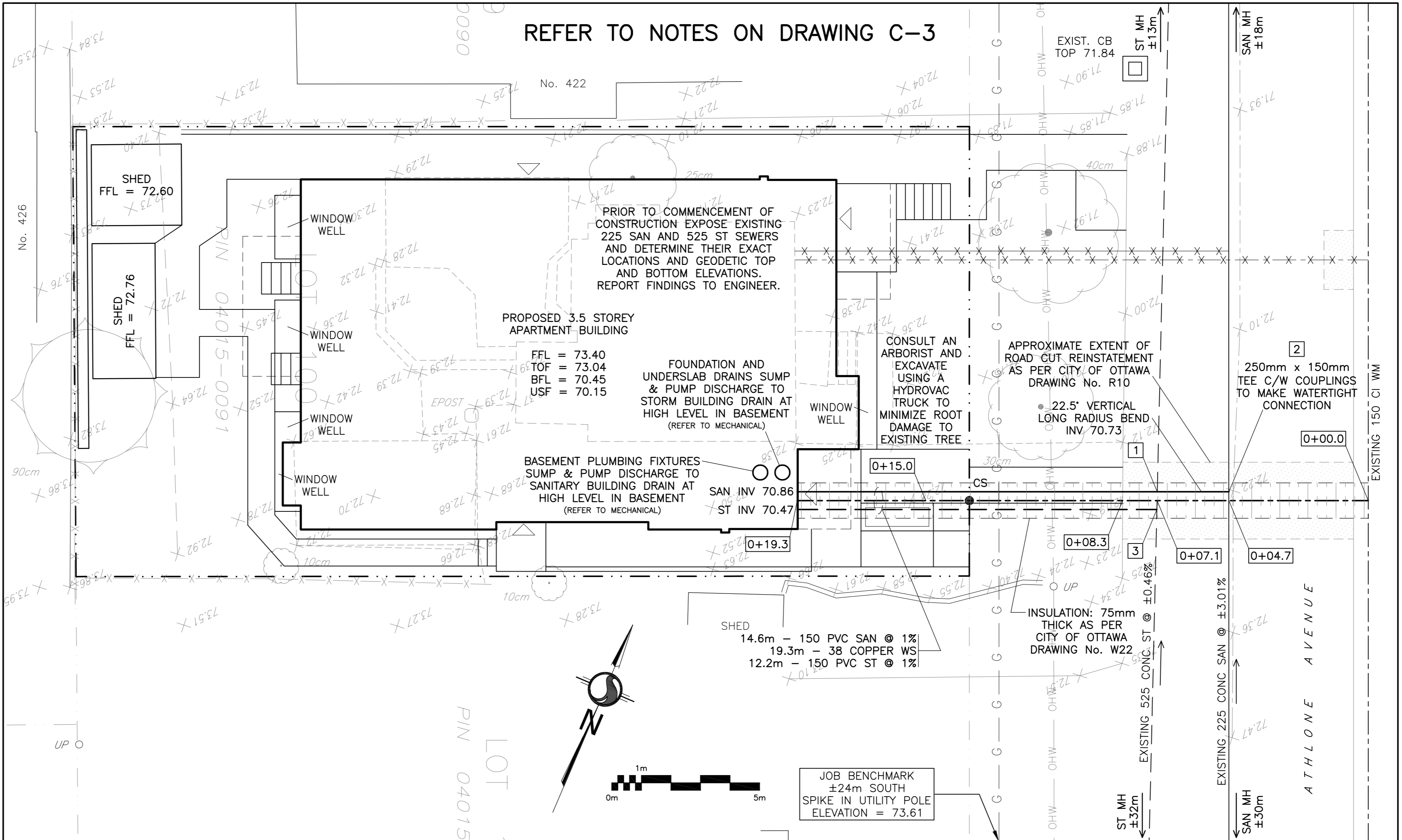
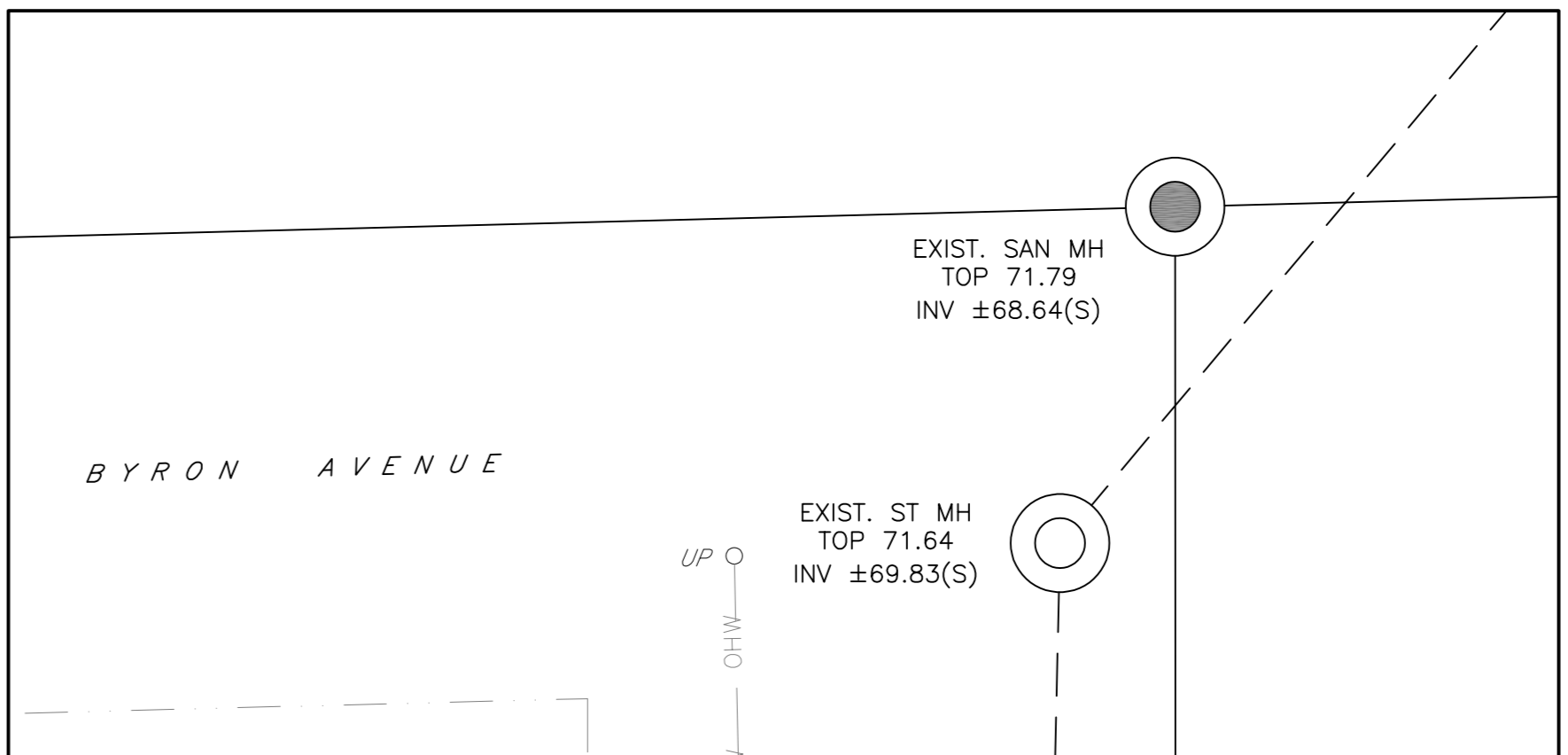
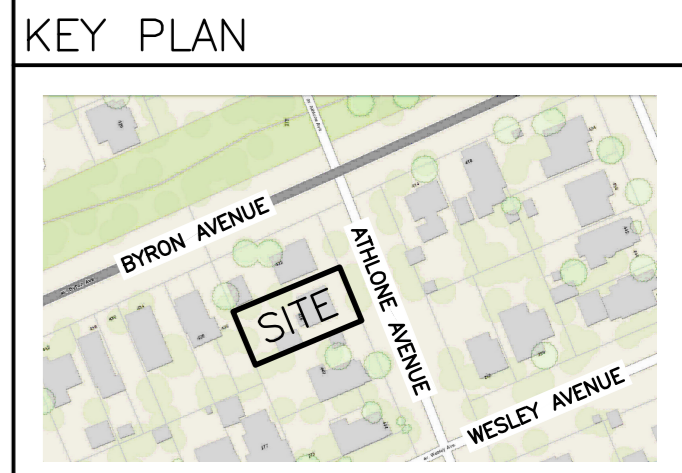


REF	DETAILS	CLEARANCE	REF	DETAILS	CLEARANCE
1	150 SAN INV 70.74 525 ST TOP ±70.59	±150mm	2	150 SAN INV 69.80 225 SAN SPL ±69.80	-
3	150 ST OBV 70.50 525 ST OBV ±70.50	-			



### LEGEND

- FFL FINISHED FLOOR ELEVATION
- TOF TOP OF FOUNDATION
- BFL BASEMENT FLOOR ELEVATION
- USF UNDERSIDE OF FOOTING
- PROPERTY LINE
- CB CATCH-BASIN
- MH STORM MANHOLE
- MH SANITARY MANHOLE
- CS CURB STOP & STANDPOST
- SAN SANITARY SEWER
- ST STORM SEWER
- WS/WM WATER SERVICE/WATERMAIN
- OBV OBVERT OF PIPE
- SPL SPRINGLINE OF PIPE
- INV INVERT OF PIPE
- ±99.99 EXISTING GRADE ELEVATION
- 150mm BARRIER CURB

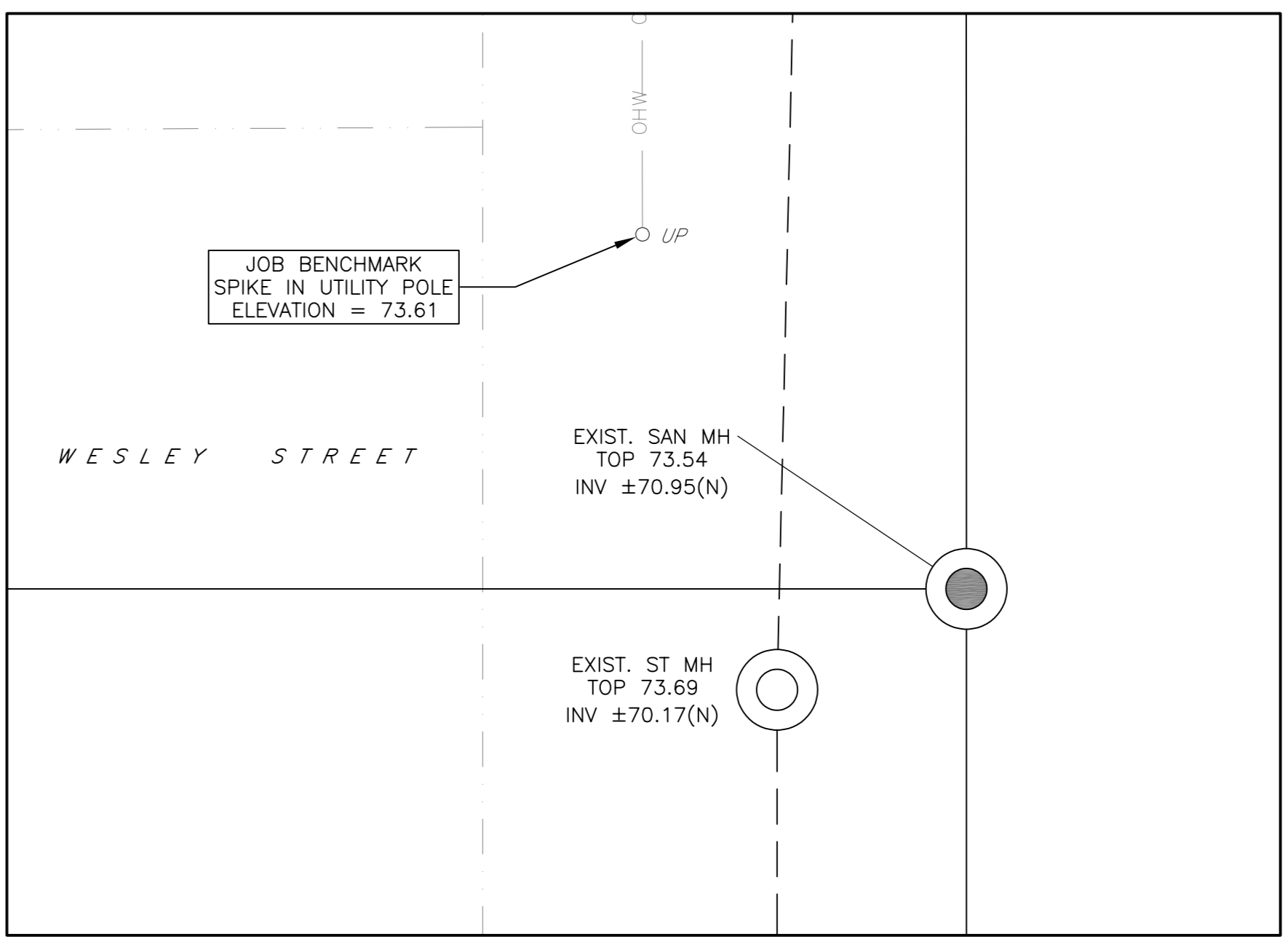
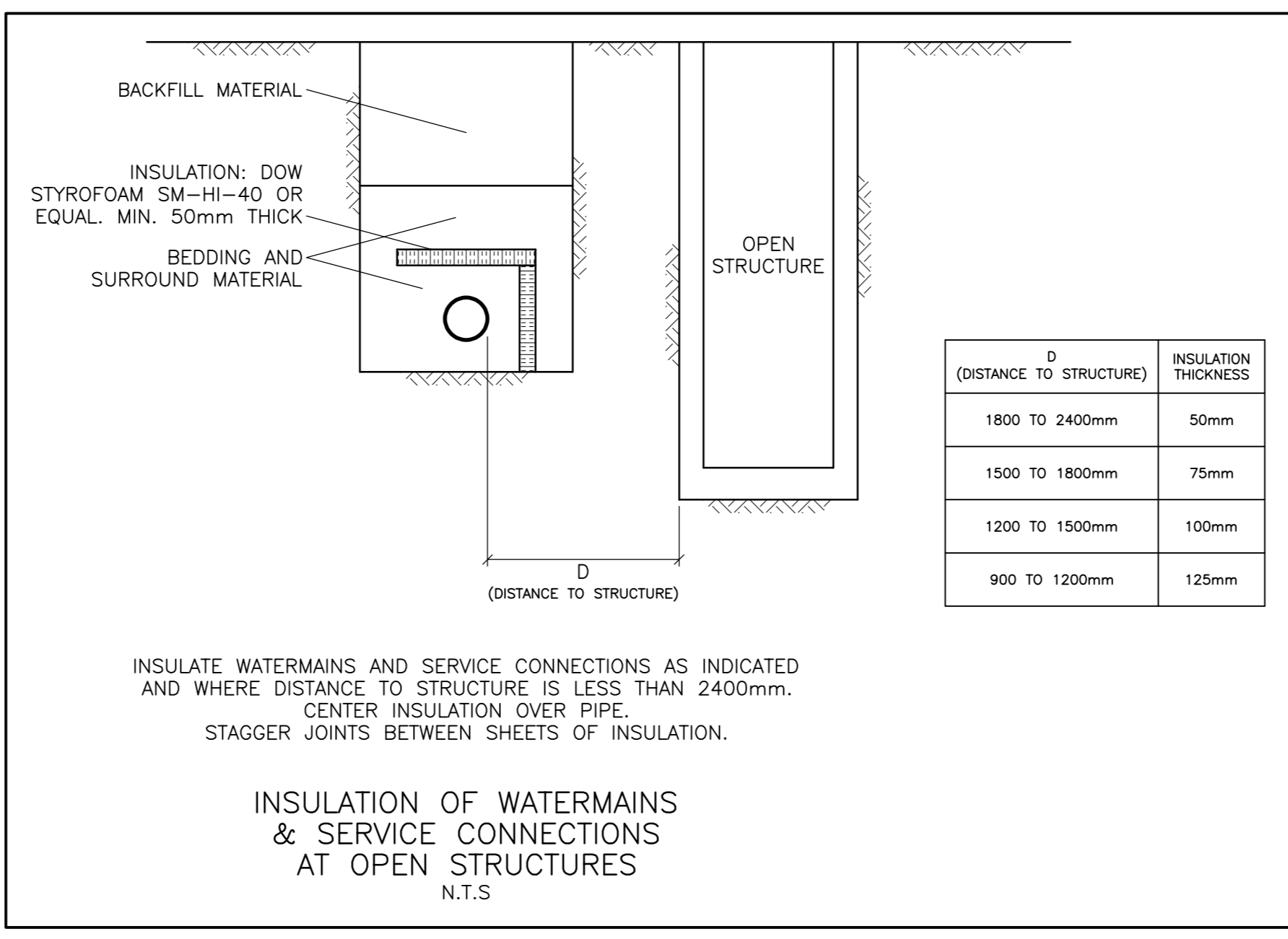


No.	DATE	REVISION
3	APR 3-23	RE-ISSUED FOR APPROVAL
2	MAY 16-22	ISSUED FOR APPROVAL
1	MAY 5-22	ISSUED FOR COORDINATION

### WATER SERVICE PROFILE TABLE

MATERIAL:  
38mm COPPER ASTM B88 TYPE "K" SOFT

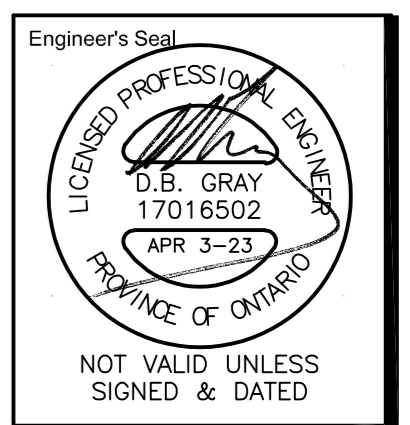
STATION	DESCRIPTION	GRADE ELEVATION	TOP OF PIPE	DEPTH OF COVER	NOTES
0+00.0	TVS CONNECTION TO 150mm MUNICIPAL WATERMAIN TO CITY OF OTTAWA STANDARDS	±72.17	±70.37	±1.80	START OF INSULATION IN SHALLOW TRENCH: 75mm THICK
0+04.7	-	±72.22	70.12	±2.10	38 WS U/S 70.08 225 SAN TOP 69.93
0+07.1	-	±72.19	69.73	±2.46	525 ST U/S 69.88 38 WS TOP 69.73
0+08.3	-	±72.17	69.77	2.40	EDGE OF ROAD
0+13.5	38mm CURB STOP & SERVICE POST TO CITY OF OTTAWA STANDARDS	72.44	70.04	2.40	ON PROPERTY LINE
0+15.0	-	72.46	70.06	2.40	START OF INSULATION AT OPEN STRUCTURE: 75mm THICK
0+19.3	-	72.64	70.10	2.54	ENTRY INTO BUILDING END OF INSULATION AT OPEN STRUCTURE: 75mm THICK



**D. B. GRAY ENGINEERING INC.**  
 Stormwater Management - Grading & Drainage - Storm & Sanitary Sewers - Watermain  
 700 Long Point Circle 613-425-8044  
 Ottawa, Ontario d.gray@dbgrayengineering.com

Project  
**PROPOSED 3.5-STOREY APARTMENT BUILDING**  
 436 ATHLONE AVENUE  
 OTTAWA, ONTARIO

Drawing Title  
**SITE SERVICING PLAN**



Drawn D.B.G.  
 H. Scale 1:100  
 V. Scale  
 Date MAY 5-22  
 Job No. 22027

Drawing No.  
**C-1**  
 of 3