

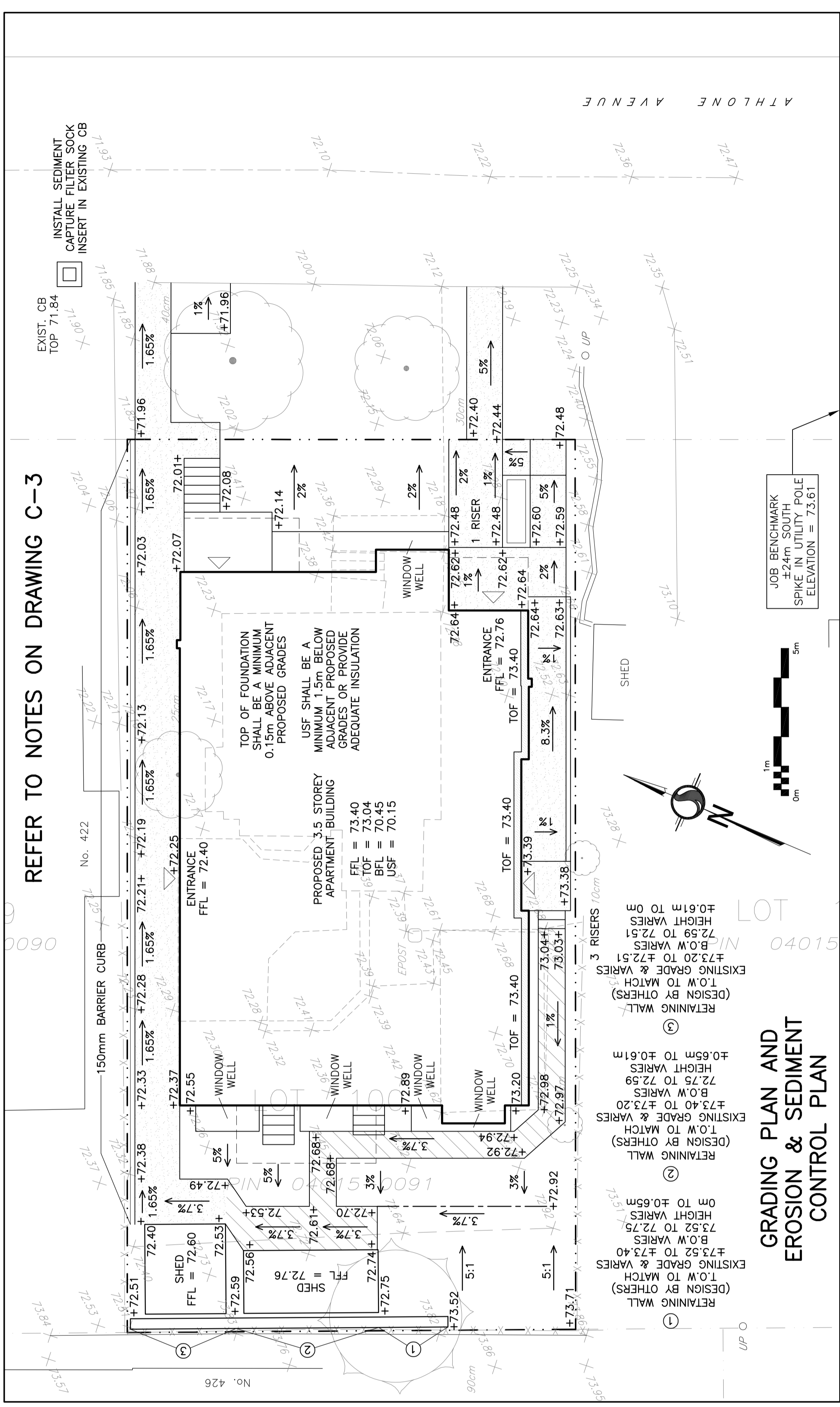
**EXISTING CONDITIONS,  
REMOVALS &  
DECOMMISSIONING PLAN**

**KEY PLAN**



**LEGEND**

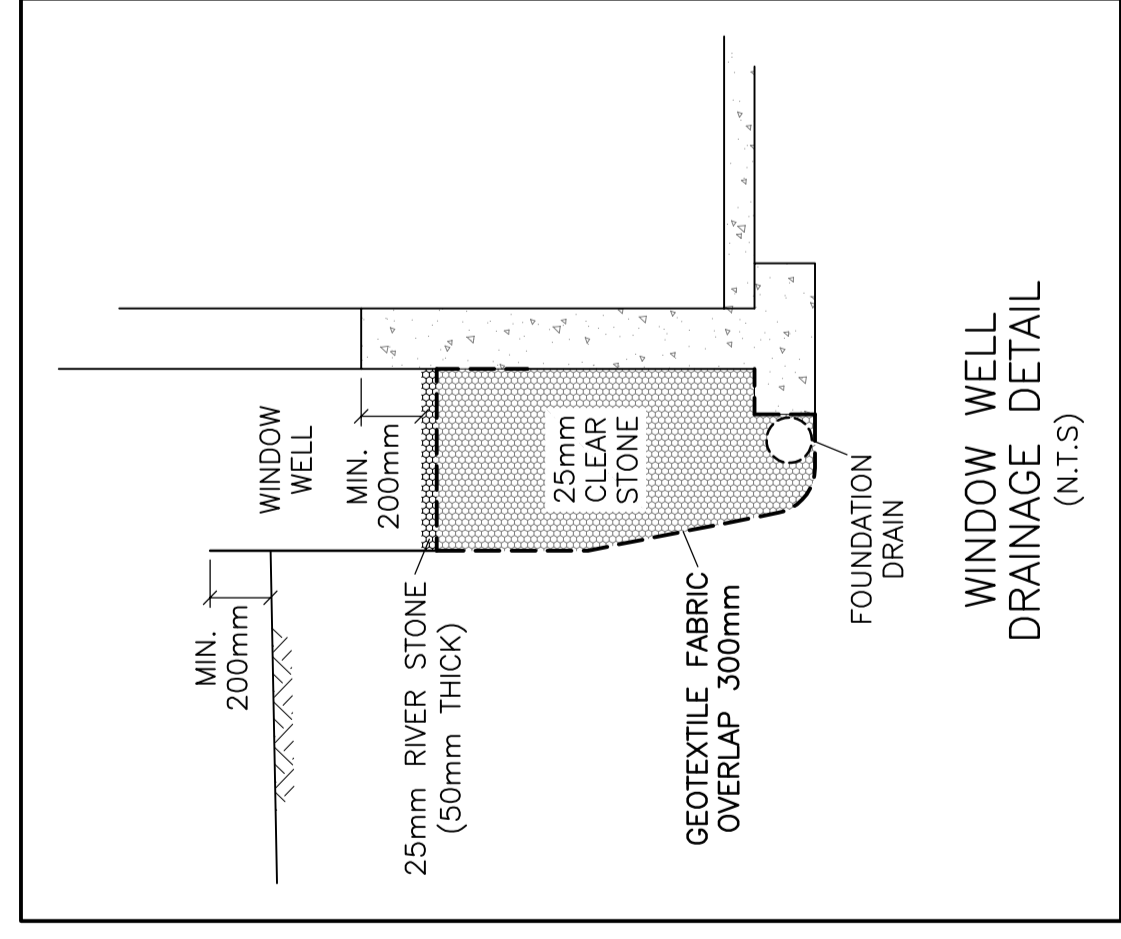
FFL	FINISHED FLOOR ELEVATION
TOF	TOP OF FOUNDATION
BFL	BASEMENT FLOOR ELEVATION
USF	UNDERSIDE OF FOOTING
- - -	PROPERTY LINE
CB	CATCH-BASIN
99.99	EXISTING GRADE ELEVATION
+99.99	PROPOSED GRADE ELEVATION
2%	PROPOSED SLOPE OF GRADE
- - -	CENTERLINE OF SWALE
=====	150mm BARRIER CURB
	PAVEMENT
.....	CONCRETE



**GRADING PLAN AND  
EROSION & SEDIMENT  
CONTROL PLAN**

**REFER TO NOTES ON DRAWING C-3**

**REFER TO NOTES ON DRAWING C-3**



**D. B. GRAY ENGINEERING INC.**  
 Professional Engineers  
 700 Long Point Circle  
 Ottawa, Ontario  
 613-425-8044  
 d.gray@dbgrayengineering.com

**PROPOSED 3.5-STORY  
APARTMENT BUILDING  
436 ATHLONE AVENUE  
OTTAWA, ONTARIO**

**EXISTING CONDITIONS,  
GRADING PLAN AND  
SEDIMENT CONTROL PLAN**

Engineer's Seal  
 D.B. GRAY  
 17016502  
 APR 3-23  
 PROFESSIONAL ENGINEER  
 REG. NO. 17016502

Drawn: D.B.G.  
 H. Scale: 1:100  
 V. Scale: 1:100  
 Date: MAY 5-22  
 Job No.: 22027

Project: PROPOSED 3.5-STORY APARTMENT BUILDING  
 Drawing Title: EXISTING CONDITIONS, GRADING PLAN AND SEDIMENT CONTROL PLAN

Drawing No.: **C-2**  
 of **3**

NOT VALID UNLESS SIGNED & DATED

No.	DATE	REVISION
3	APR 3-23	RE-ISSUED FOR APPROVAL
2	MAY 16-22	ISSUED FOR APPROVAL
1	MAY 5-22	ISSUED FOR COORDINATION