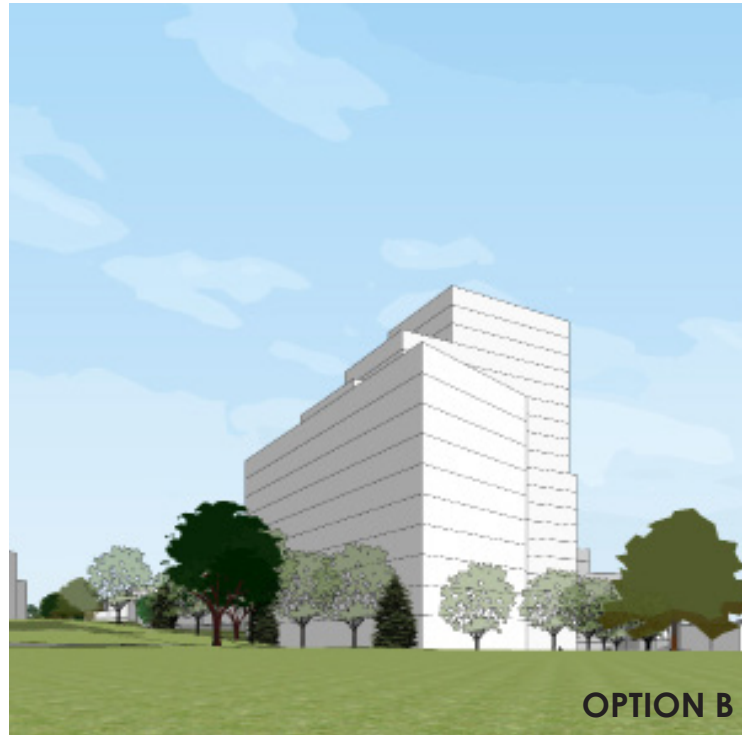
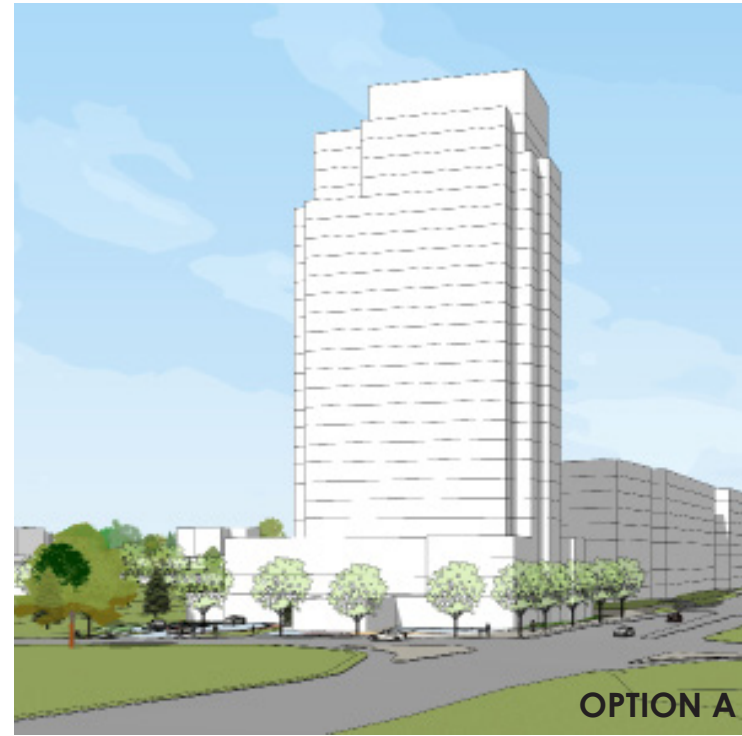




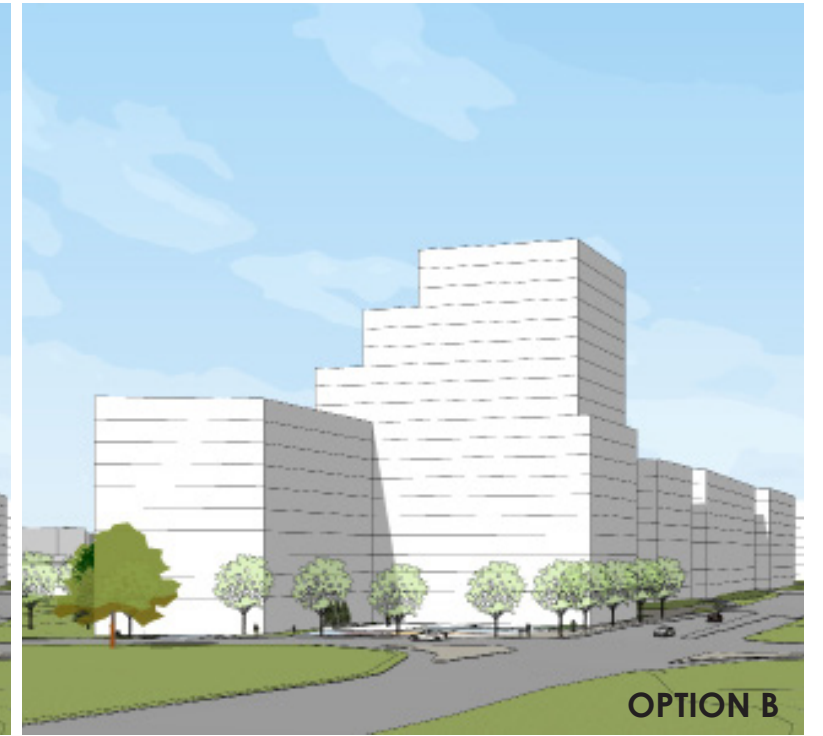
OPTION A



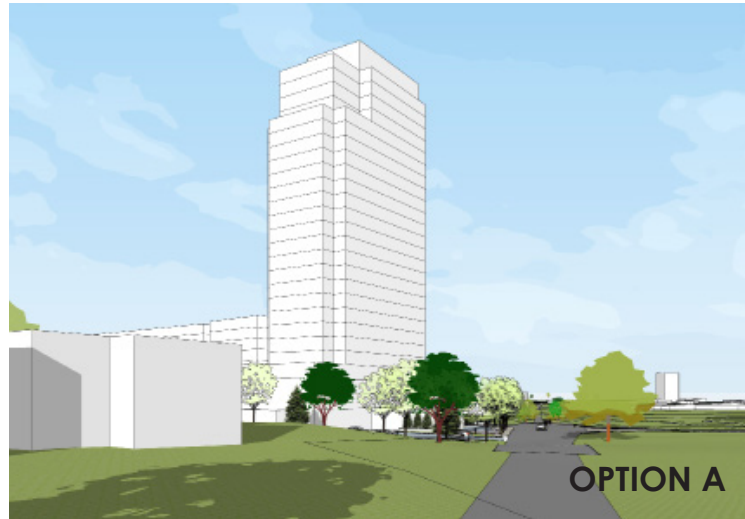
OPTION B



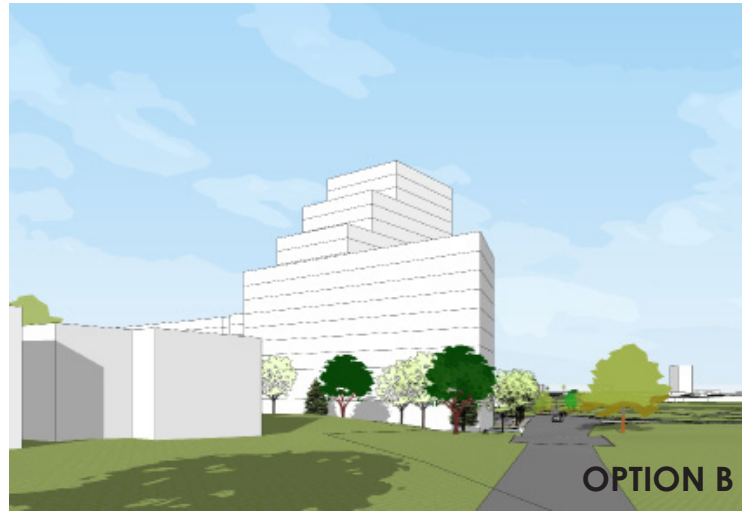
OPTION A



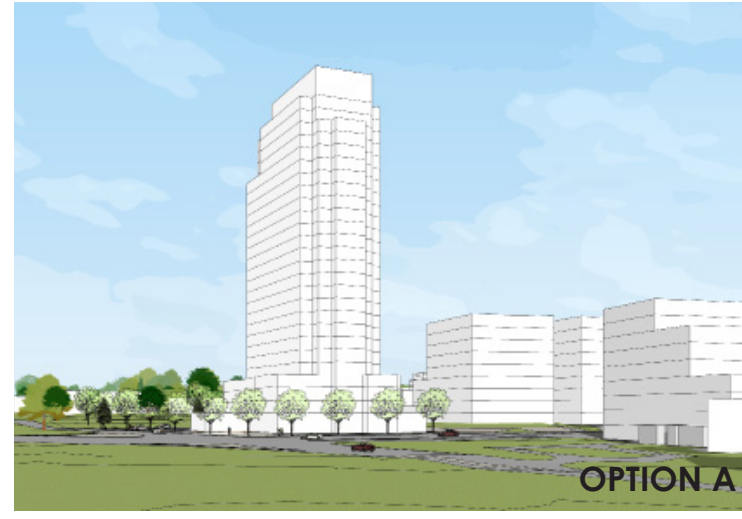
OPTION B



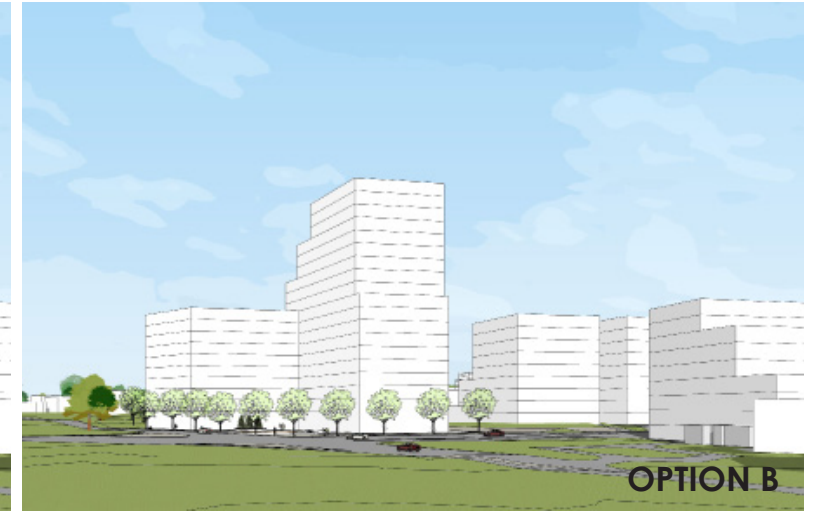
OPTION A



OPTION B



OPTION A



OPTION B

OPTION A - UDRP SUBMISSION

DEVELOPMENT SUMMARY

Proposed GFA (Construction area) : 258,472 sq.ft.
 Building height: 26 Storeys (88m from average grade).

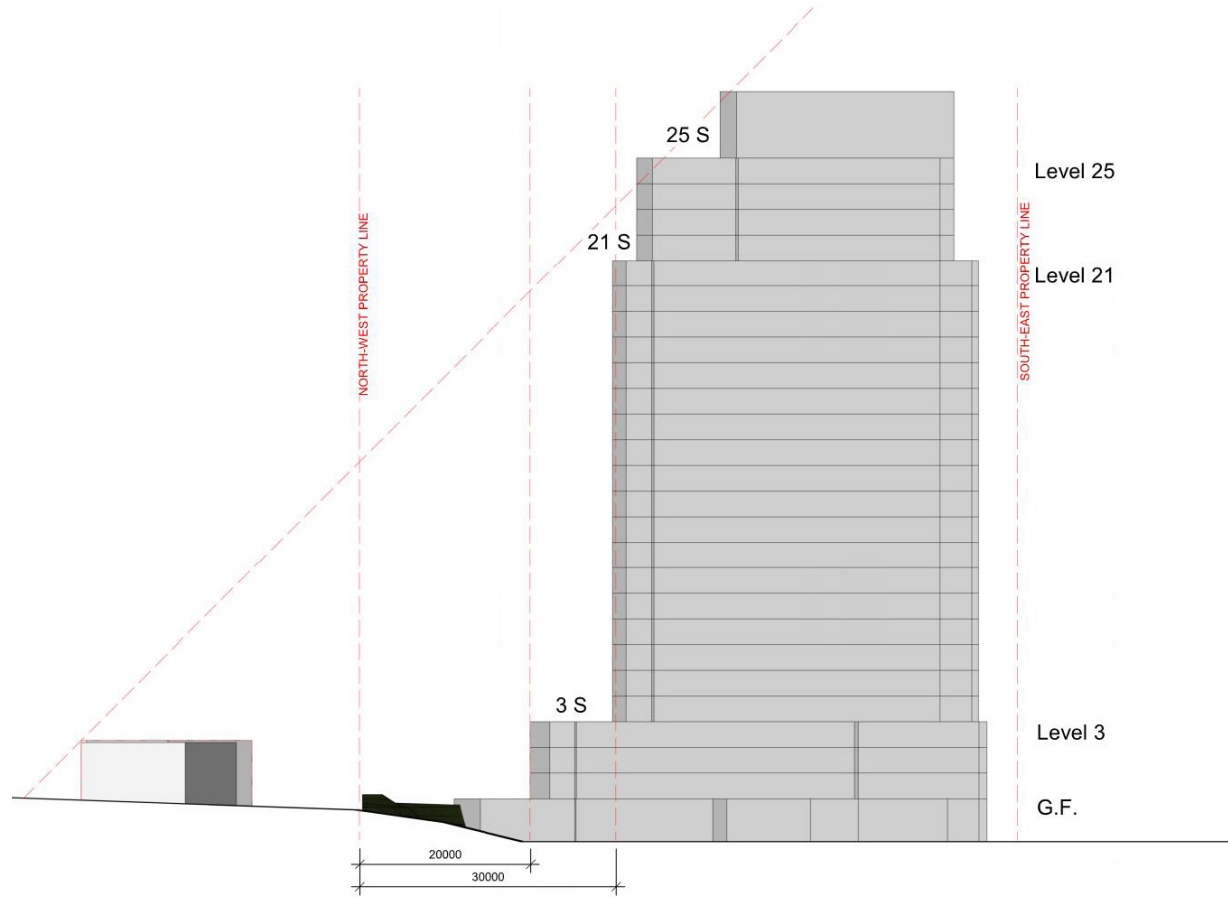
- G.F.: 23,992 sq.ft.
- L1 - L3: 14,307 sq.ft.
- L4 - L21: 8,905 sq.ft.
- L22 - L25: 7,905 sq.ft.
- L26 - L27: 7,730 sq.ft.

OPTION B - ALTERNATIVE MASSING OPTION

DEVELOPMENT SUMMARY

Proposed GFA (Construction area) : 279,756 sq.ft.
 Building height: 18 Storeys (59m from average grade).

- G.F. - L9: 20,485 sq.ft.
- L10 - L12: 10,386 sq.ft.
- L13 - L15: 8,390 sq.ft.
- L16 - L18: 6,190 sq.ft.

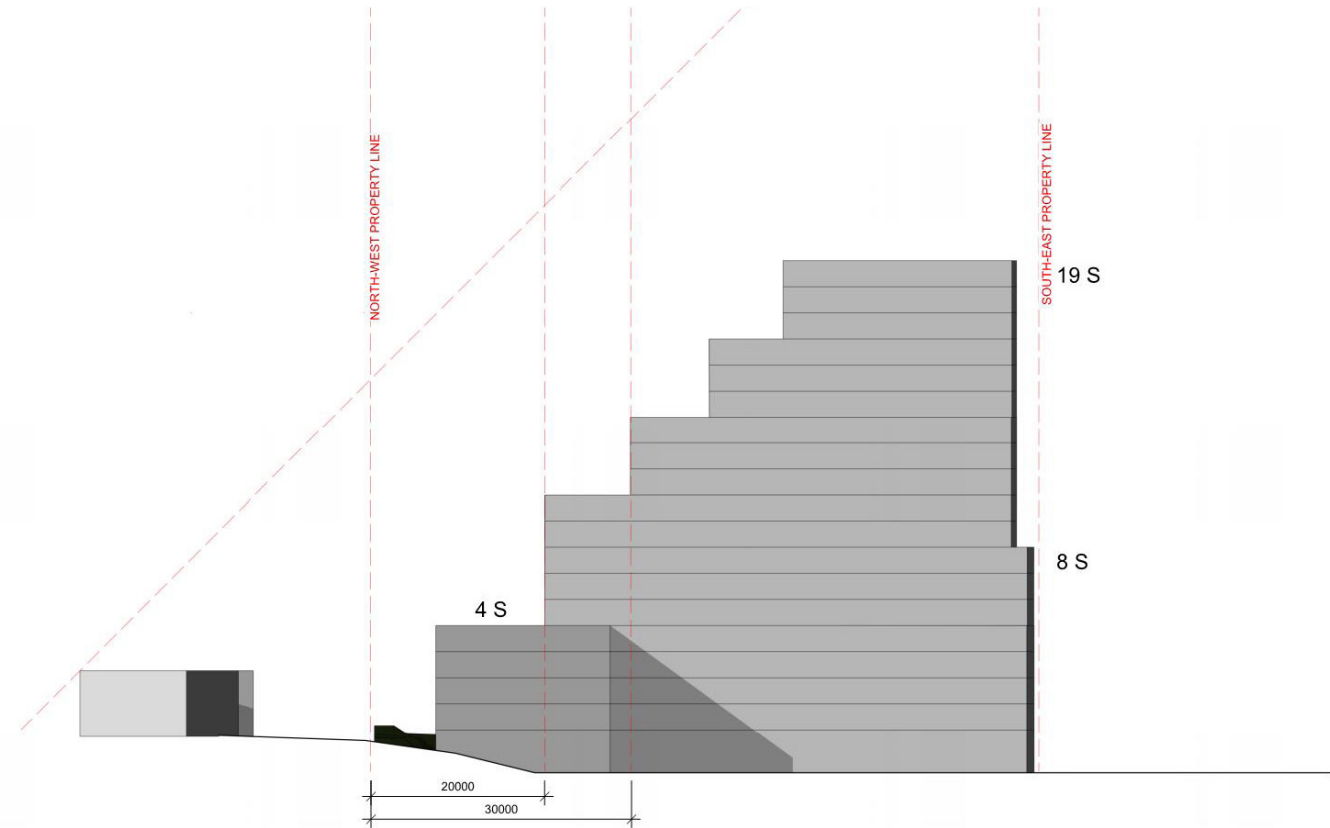


OPTION A - UDRP SUBMISSION - West elevation

DEVELOPMENT SUMMARY

Proposed GFA (Construction area) : 258,472 sq.ft.
 Building height: 26 Storeys (88m from average grade).

- G.F.: 23,992 sq.ft.
- L1 - L3: 14,307 sq.ft.
- L4 - L21: 8,905 sq.ft.
- L22 - L25: 7,905 sq.ft.
- L26 - L27: 7,730 sq.ft.



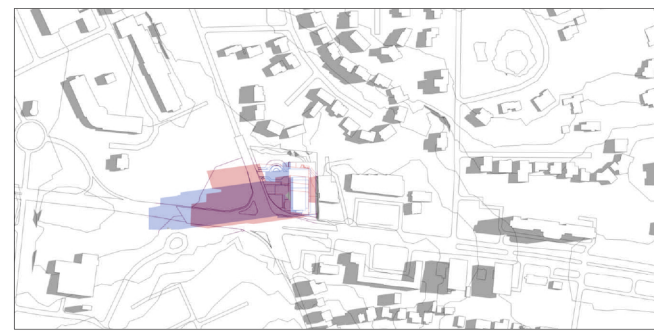
OPTION B - ALTERNATIVE MASSING OPTION - West elevation

DEVELOPMENT SUMMARY

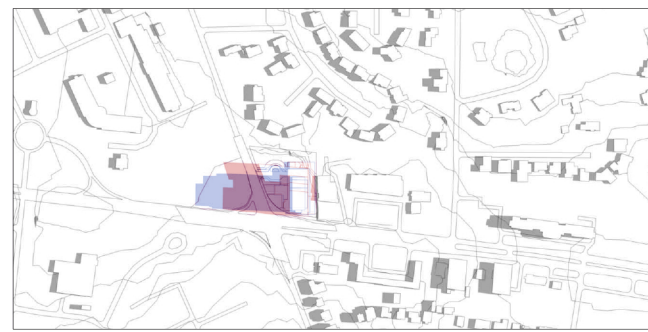
Proposed GFA (Construction area) : 279,756 sq.ft.
 Building height: 18 Storeys (59m from average grade).

- G.F. - L9: 20,485 sq.ft.
- L10 - L12: 10,386 sq.ft.
- L13 - L15: 8,390 sq.ft.
- L16 - L18: 6,190 sq.ft.

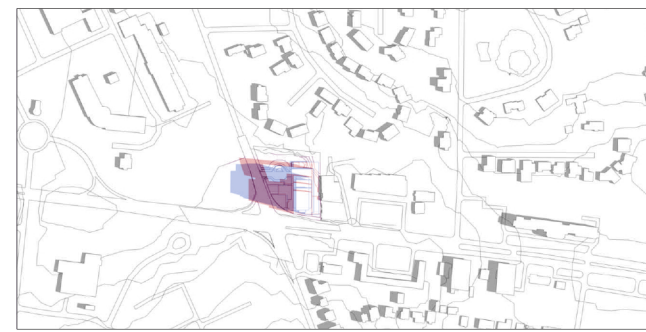
JUNE 21 (DST)



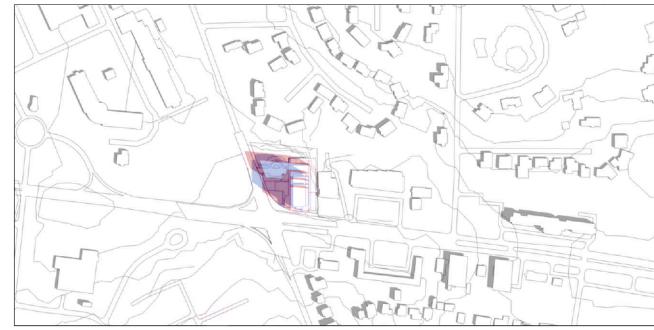
8:00 AM



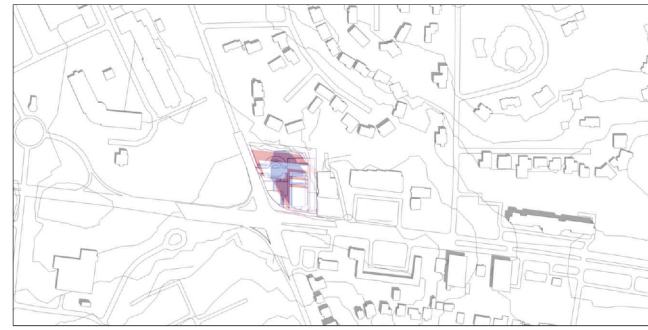
9:00 AM



10:00 AM



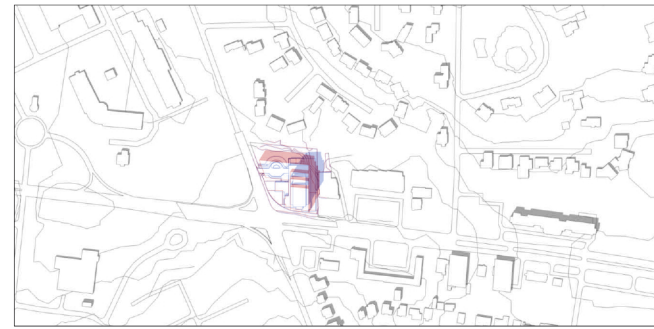
11:00 AM



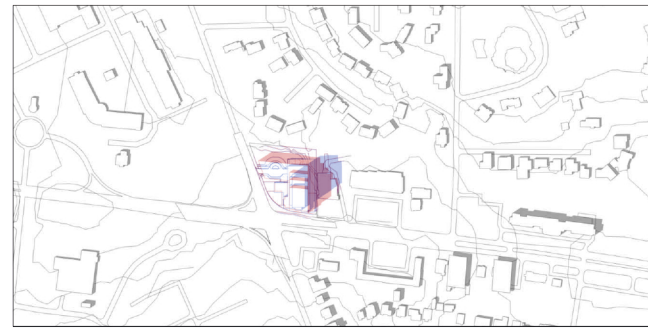
12:00 PM



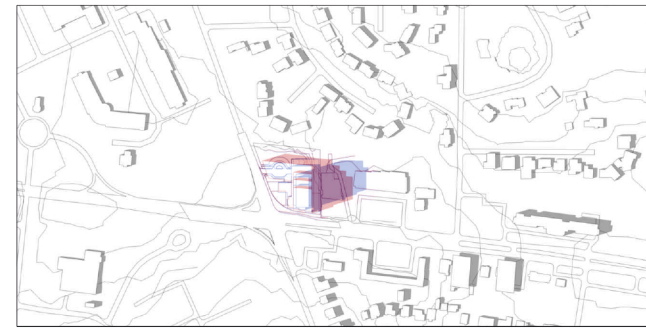
1:00 PM



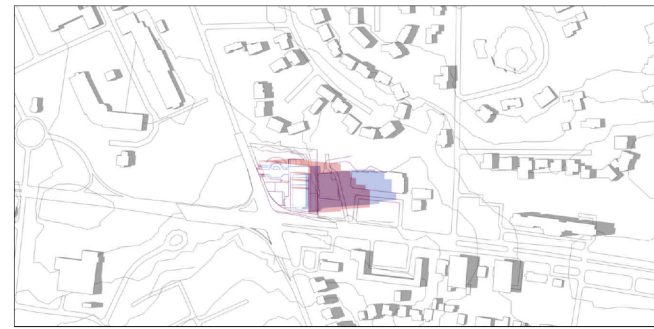
2:00 PM



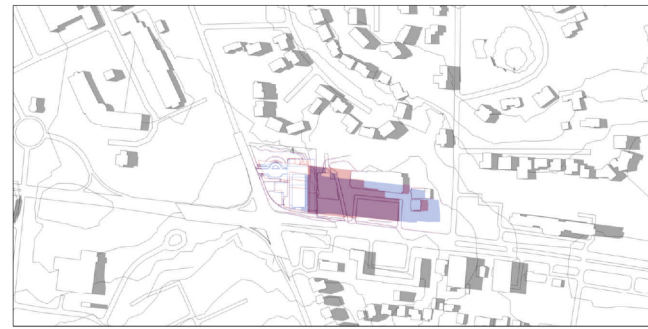
3:00 PM



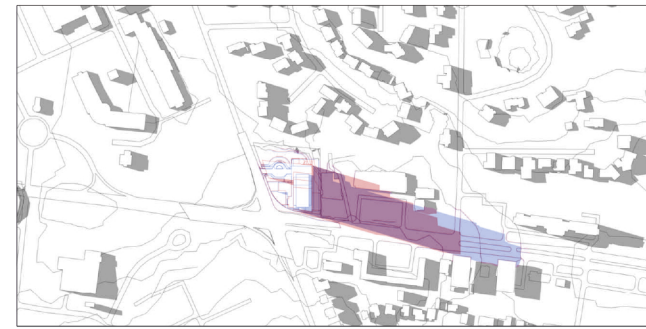
4:00 PM



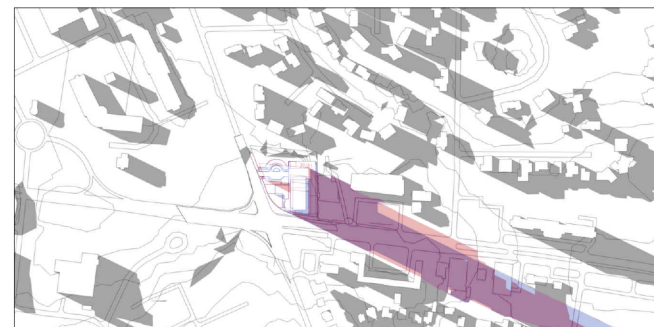
5:00 PM



6:00 PM



7:00 PM



8:00 PM

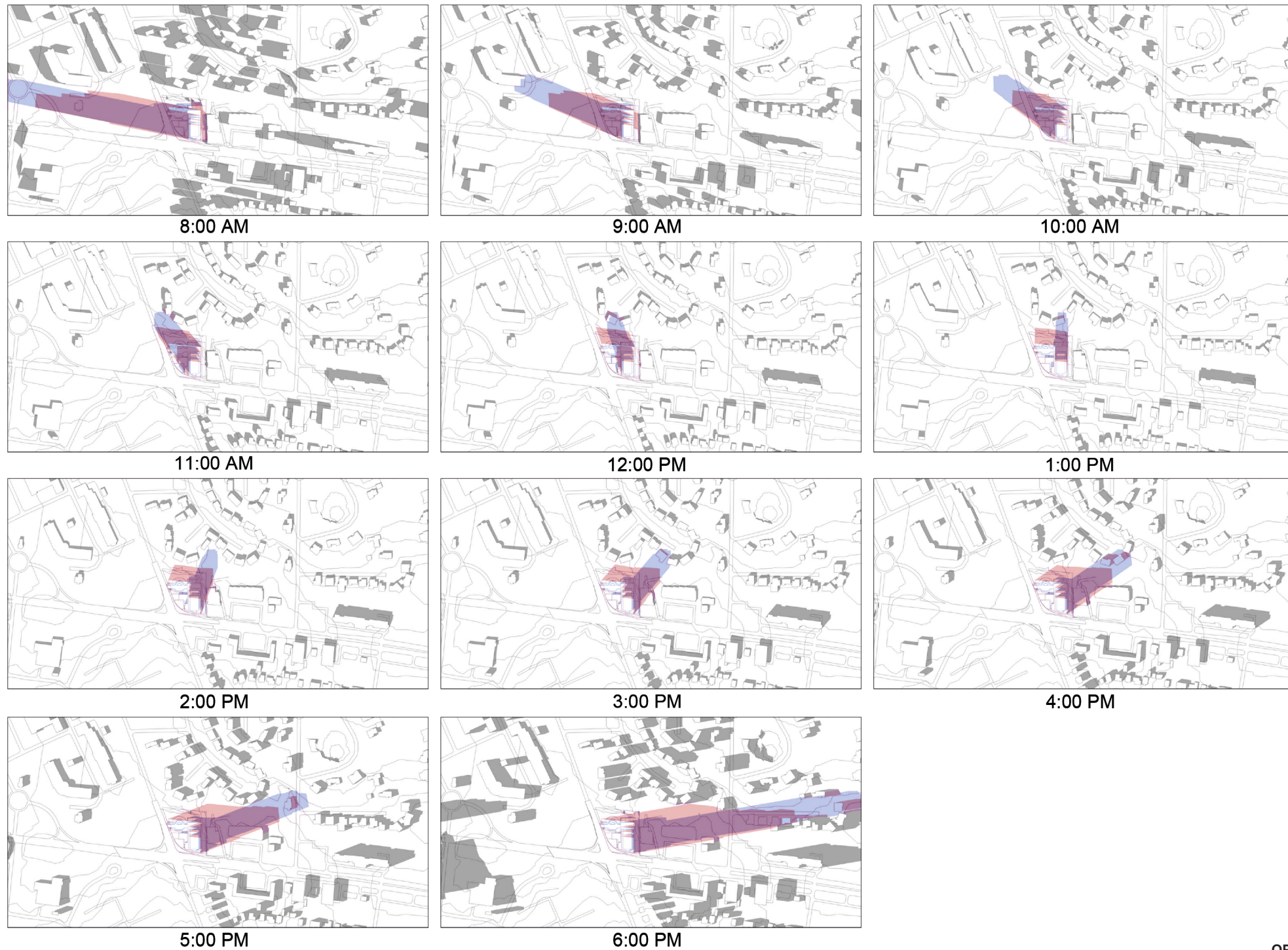
OPTION A - UDRP SUBMISSION



OPTION B - ALTERNATIVE MASSING OPTION



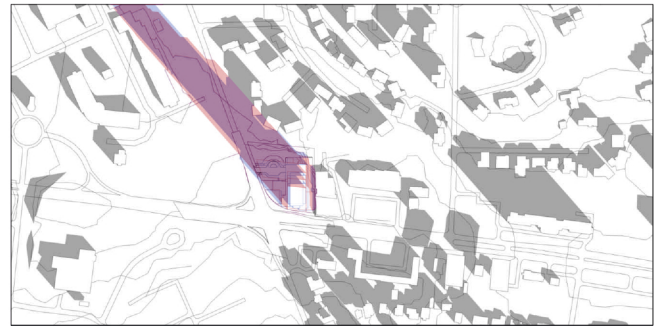
SEPTEMBER 21 (DST)



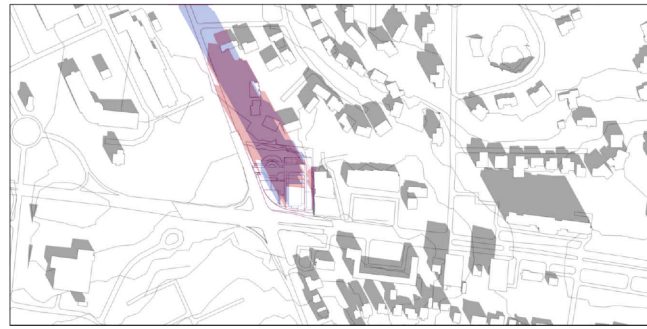
OPTION A - UDRP SUBMISSION

OPTION B - ALTERNATIVE MASSING OPTION

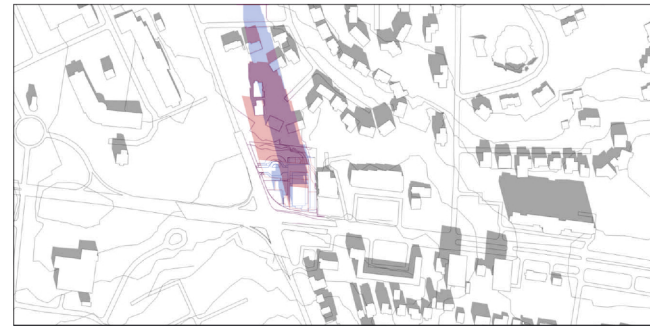
DECEMBER 21



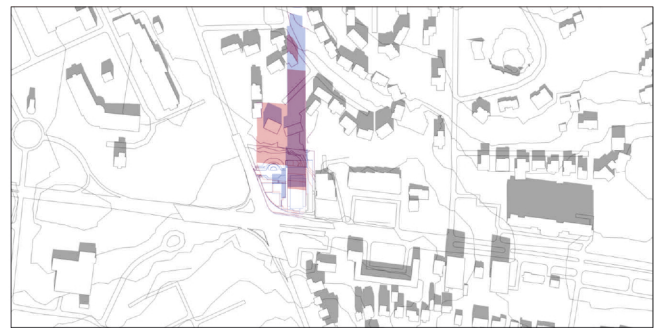
9:00 AM



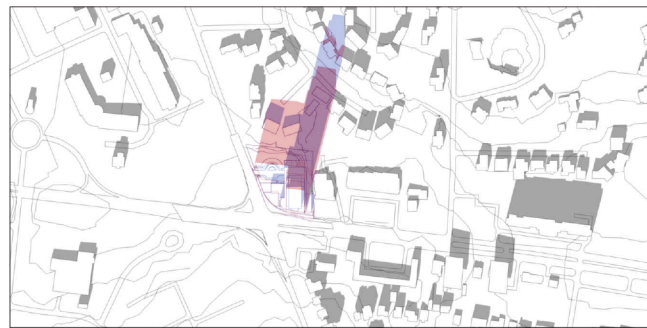
10:00 AM



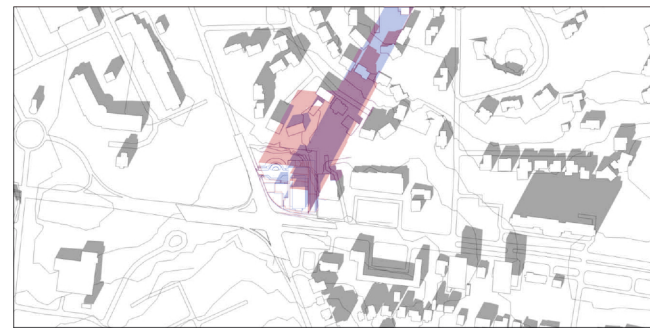
11:00 AM



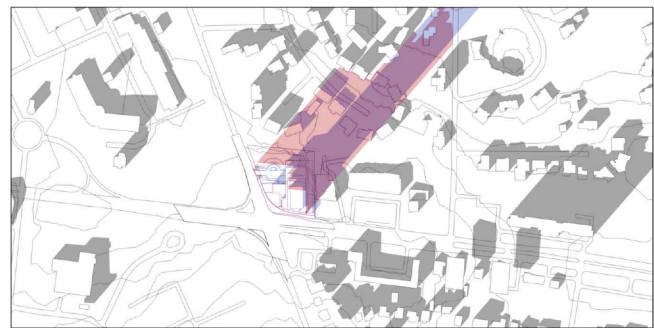
12:00 PM



1:00 PM



2:00 PM



3:00 PM

OPTION A - UDRP SUBMISSION



OPTION B - ALTERNATIVE MASSING OPTION

