

1 SITE PLAN - DEMOLITION WORK
E1 SCALE: 1:400

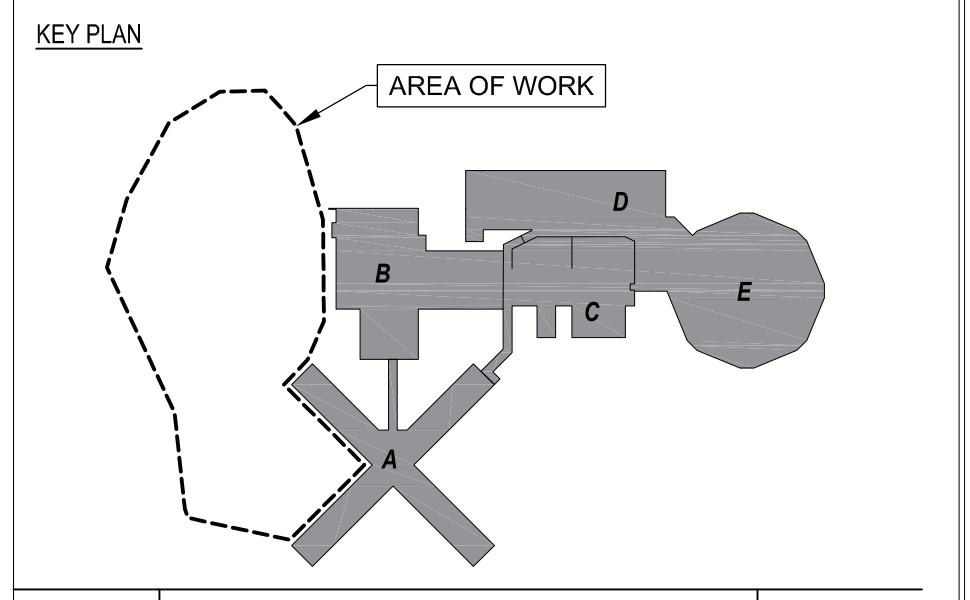
DRAWINGS LIST	
DWG	DESCRIPTION
E1	ELECTRICAL DRAWING LIST, LEGENDS, AND SITE PLAN - DEMOLITION WORK
E2	ELECTRICAL SITE PLAN - NEW WORK
E3	ELECTRICAL DETAILS
E4	ELECTRICAL LIGHTING CALCULATIONS

ABBREVIATIONS LEGEND	
ABBREVIATION	DESCRIPTION
(E)	INDICATES EXISTING DEVICE TO REMAIN
(X)	INDICATES EXISTING DEVICE TO BE DISCONNECTED AND REMOVED
(N)	INDICATES NEW DEVICE TO BE PROVIDED
(R)	DISCONNECT AND REINSTALL EXISTING ITEM TO ACCOMMODATE NEW CONSTRUCTION
C/W	COMPLETE WITH
N.T.S.	NOT TO SCALE
S	SURFACE MOUNTED
WP	WEATHER PROOF

ELECTRICAL LEGEND - LINE TYPES	
	NEW ITEM TO BE PROVIDED
	EXISTING ITEM TO REMAIN
	EXISTING TO BE REMOVED
	AREA OF WORK

SYMBOLS	
SYMBOL	DESCRIPTION
	LIGHT STANDARD - NUMBER OF HEADS AS INDICATED

DRAWING NOTES	
①	DISCONNECT AND REMOVE EXISTING LIGHT POLE BASES, POLES, AND HEADS.
②	EXISTING POST MOUNTED RECEPTACLE FOR BLOCK HEATERS.



No	Revisions	Date
04		
03		
02	99% DESIGN REVIEW	2023.03.15
01	90% DESIGN REVIEW	2022.12.23

Orientation Seal

The Contractor shall check and verify all dimensions and report all errors and omissions to the IO-Owner's/MBS Designee (as applicable) for his/her written direction before proceeding with the Work.

A Detail No
 B Sheet No where detailed

PROJECT ENGINEER: CIVIL, STRUCTURAL, MECHANICAL & ELECTRICAL

J2g Consultants Inc.
 ENGINEERS • PLANNERS • PROJECT MANAGERS
 1150 MORRISON DRIVE, SUITE 410, OTTAWA, ON K2H 8S9
 PHONE: 613-828-7800 FAX: 613-828-2600
 J2g Project #: 20-5060A

ARCHITECT:
DREESSEN CARDINAL ARCHITECTS INC.
 1350 WELLINGTON STREET WEST,
 OTTAWA, ON
 K1Y 3C1
 TEL 613-725-2294
 WWW.ARCHITECTSDCA.COM

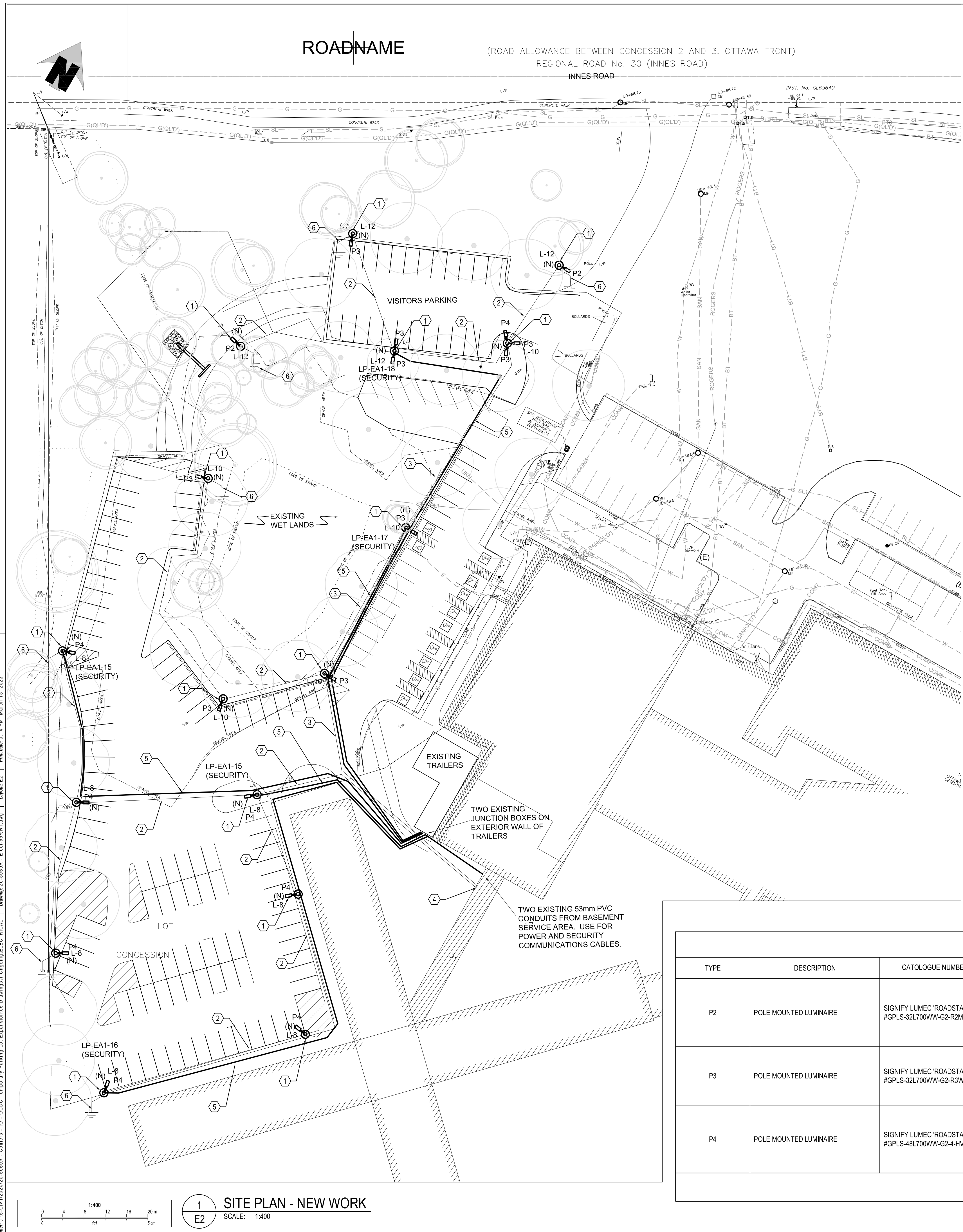
AMIS N B
 Project
**OTTAWA CARLETON DETENTION CENTRE
 TEMPORARY PARKING LOT EXPANSION**
 Location
 INNES ROAD, GLOUCESTER TOWNSHIP
 OTTAWA
 IO Project No Site No Building No

Client
MCSCS

Drawing Title
**ELECTRICAL DRAWING LIST, LEGENDS,
 AND SITE PLAN - DEMOLITION WORK**

Scale AS NOTED	Date DECEMBER 2020
Drawn by E.YEH	Substantial Performance Date -
Designed by A.DEMMINGS	Drawing No E1
Approved by	of
CAD File NAME	

File: J:\S:\2020\20-5060A - Colliers - IO - ODDC Temporary Parking Lot Expansion\Drawings\11\Original\ELECTRICAL - Drawing 20-5060A - Elec-09\91.dwg | Layer: E1 | Plot date: 3:14 PM March 15, 2023 | 24x36in



ROADNAME (ROAD ALLOWANCE BETWEEN CONCESSION 2 AND 3, OTTAWA FRONT)
REGIONAL ROAD No. 30 (INNES ROAD)
INNES ROAD

1 SITE PLAN - NEW WORK
SCALE: 1:400

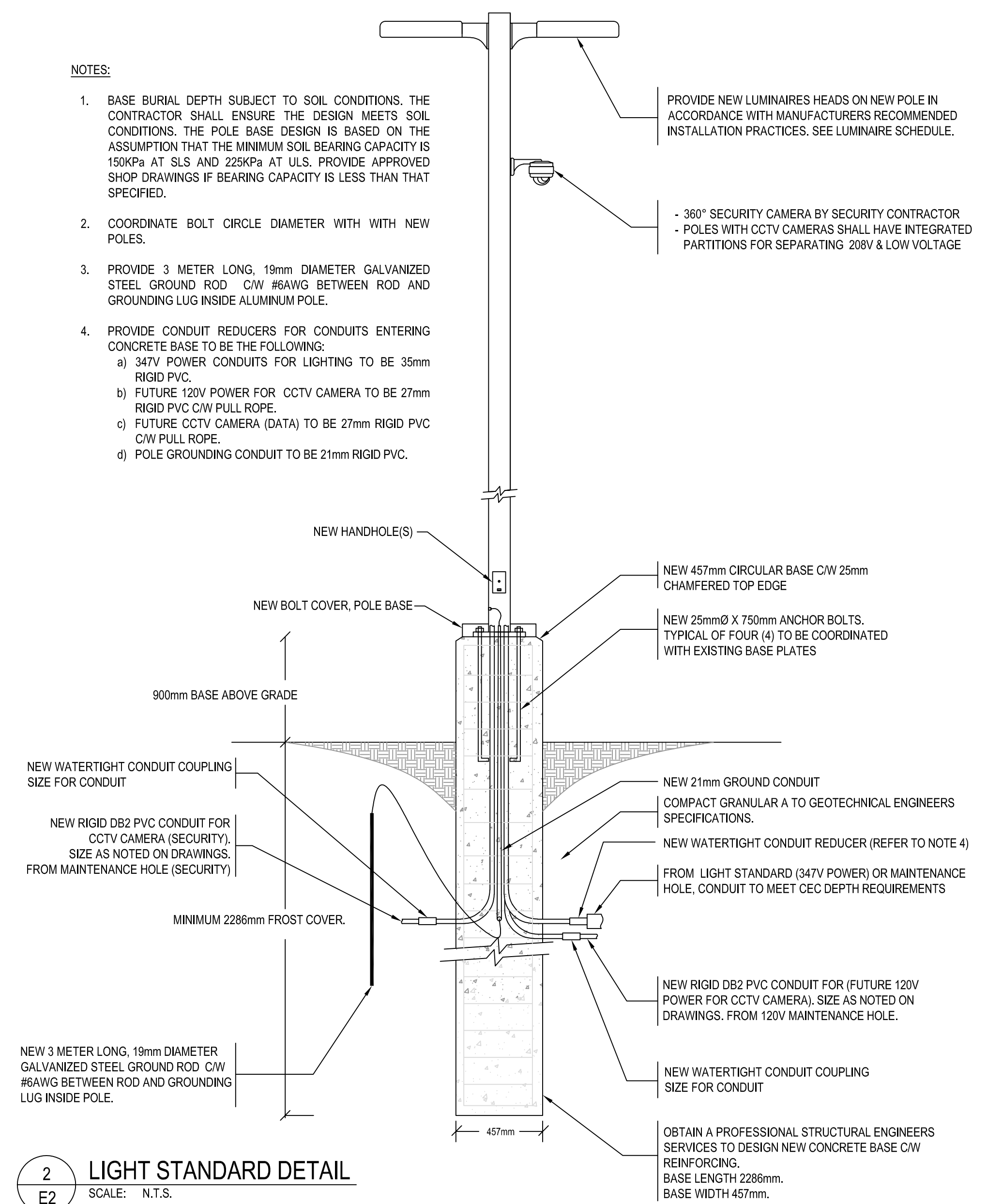
DRAWING NOTES

- ① PROVIDE NEW CONCRETE BASE, POLE AND LIGHT FIXTURE HEAD. SEE LIGHT STANDARD DETAIL BELOW AND LUMINAIRE SCHEDULE.
- ② PROVIDE 2#10AWG + GROUND IN 53MM PVC CONDUIT FOR POWER TO LUMINAIRE
- ③ PROVIDE 4#10AWG + GROUND IN 53MM PVC CONDUIT FOR POWER TO LUMINAIRE
- ④ REUSE EXISTING CORE DRILLED HOLE THROUGH EXTERIOR WALL. RUN NEW WIRING INTO EXISTING JUNCTION BOX FOR EXTERIOR LIGHTING. CONNECT NEW LIGHTING TO EXISTING EXTERIOR LIGHTING CIRCUITS AND CONTROLS.
- ⑤ PROVIDE TWO 53MM PVC CONDUITS FROM TWO JUNCTION BOXES MOUNTED ON WALL OF PORTABLES. PROVIDE PULL ROPE INSIDE ONE CONDUIT FOR SECURITY EQUIPMENT. PROVIDE 2#10AWG + GROUND IN SECOND CONDUIT FOR POWER TO POLE MOUNTED SECURITY EQUIPMENT AND ELECTRICALLY CONNECT. COORDINATE EXACT LOCATIONS AND CONNECTION REQUIREMENTS WITH SECURITY CONTRACTOR.
- ⑥ PROVIDE NEW 3M LONG, 19MM DIAMETER GALVANIZED GROUND ROD AND #8AWG INSULATED GROUND CONDUCTOR & CONNECT.

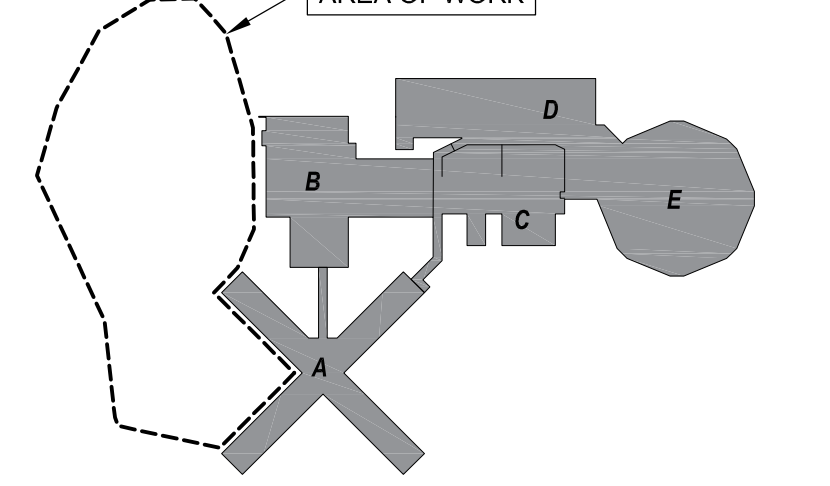
NOTES:

1. BASE BURIAL DEPTH SUBJECT TO SOIL CONDITIONS. THE CONTRACTOR SHALL ENSURE THE DESIGN MEETS SOIL CONDITIONS. THE POLE BASE DESIGN IS BASED ON THE ASSUMPTION THAT THE MINIMUM SOIL BEARING CAPACITY IS 150KPa AT SLS AND 225KPa AT ULS. PROVIDE APPROVED SHOP DRAWINGS IF BEARING CAPACITY IS LESS THAN THAT SPECIFIED.
2. COORDINATE BOLT CIRCLE DIAMETER WITH WITH NEW POLES.
3. PROVIDE 3 METER LONG, 19mm DIAMETER GALVANIZED STEEL GROUND ROD C/W #8AWG BETWEEN ROD AND GROUNDING LUG INSIDE ALUMINUM POLE.
4. PROVIDE CONDUIT REDUCERS FOR CONDUITS ENTERING CONCRETE BASE TO BE THE FOLLOWING:
 - a) 347V POWER CONDUITS FOR LIGHTING TO BE 35mm RIGID PVC.
 - b) FUTURE 120V POWER FOR CCTV CAMERA TO BE 27mm RIGID PVC C/W PULL ROPE.
 - c) FUTURE CCTV CAMERA (DATA) TO BE 27mm RIGID PVC C/W PULL ROPE.
 - d) POLE GROUNDING CONDUIT TO BE 21mm RIGID PVC.

2 LIGHT STANDARD DETAIL
SCALE: N.T.S.



KEY PLAN



No	Revisions	Date
04		
03		
02	99% DESIGN REVIEW	2023.03.15
01	90% DESIGN REVIEW	2022.12.23

Orientation Seal

The Contractor shall check and verify all dimensions and report all errors and omissions to the IO-Owner's/MBS Designee (as applicable) for his/her written direction before proceeding with the Work.

A Detail No
B Sheet No where detailed

PROJECT ENGINEER: CIVIL, STRUCTURAL, MECHANICAL & ELECTRICAL

Jp2g Consultants Inc.
ENGINEERS - PLANNERS - PROJECT MANAGERS
1150 MORRISON DRIVE, SUITE 410, OTTAWA, ON K2H 8S9
PHONE: 613-828-7800 FAX: 613-828-2600
Jp2g Project #: 20-5050A

ARCHITECT:
DREESSEN CARDINAL ARCHITECTS INC.
1350 WELLINGTON STREET WEST,
OTTAWA, ON
K1Y 3C1
TEL 613-725-2294
WWW.ARCHITECTSDCA.COM

Ontario
Infrastructure Ontario

AMIS N B
Project
OTTAWA CARLETON DETENTION CENTRE
TEMPORARY PARKING LOT EXPANSION

Location
INNES ROAD, GLOUCESTER TOWNSHIP
OTTAWA
IO Project No Site No Building No

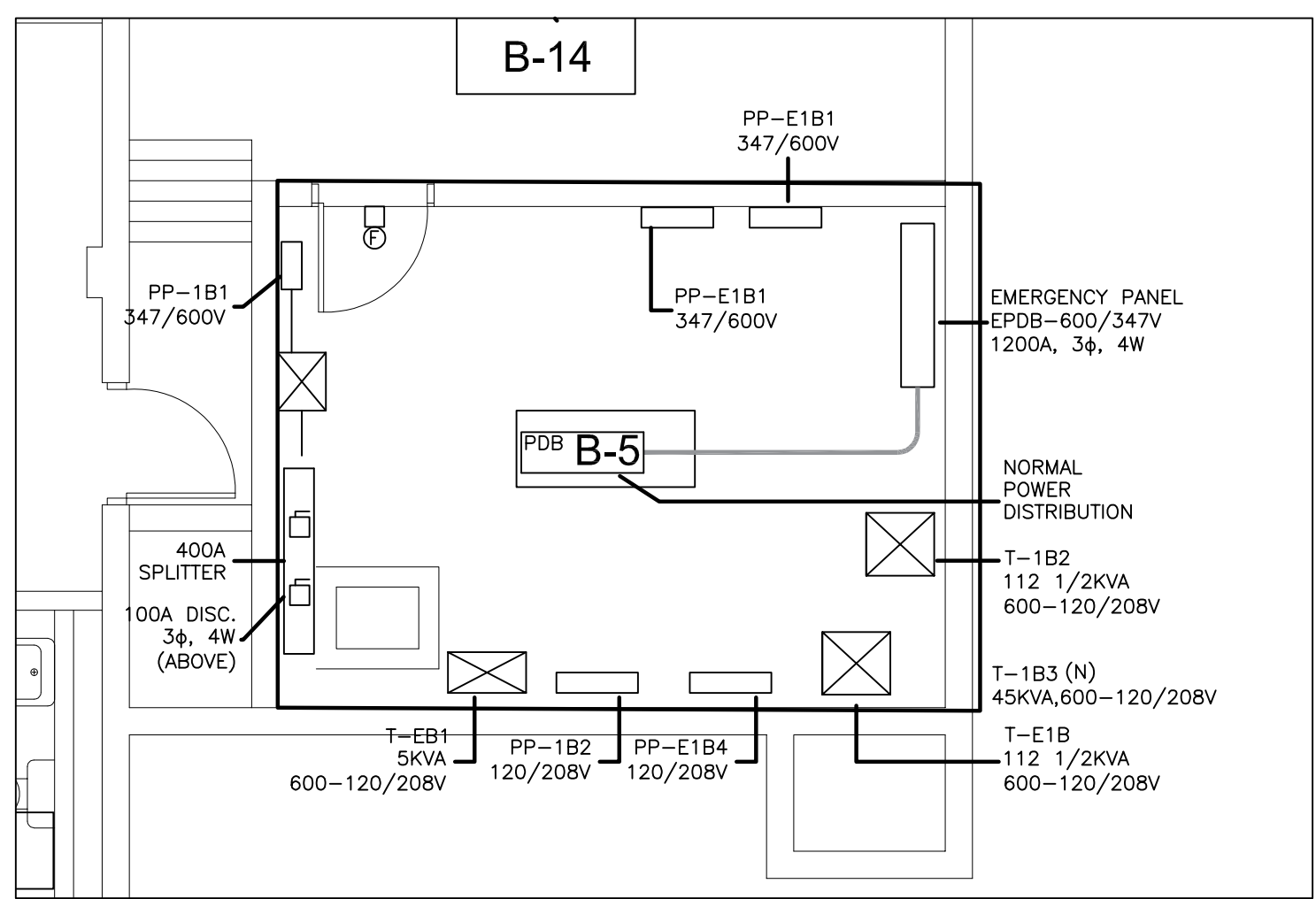
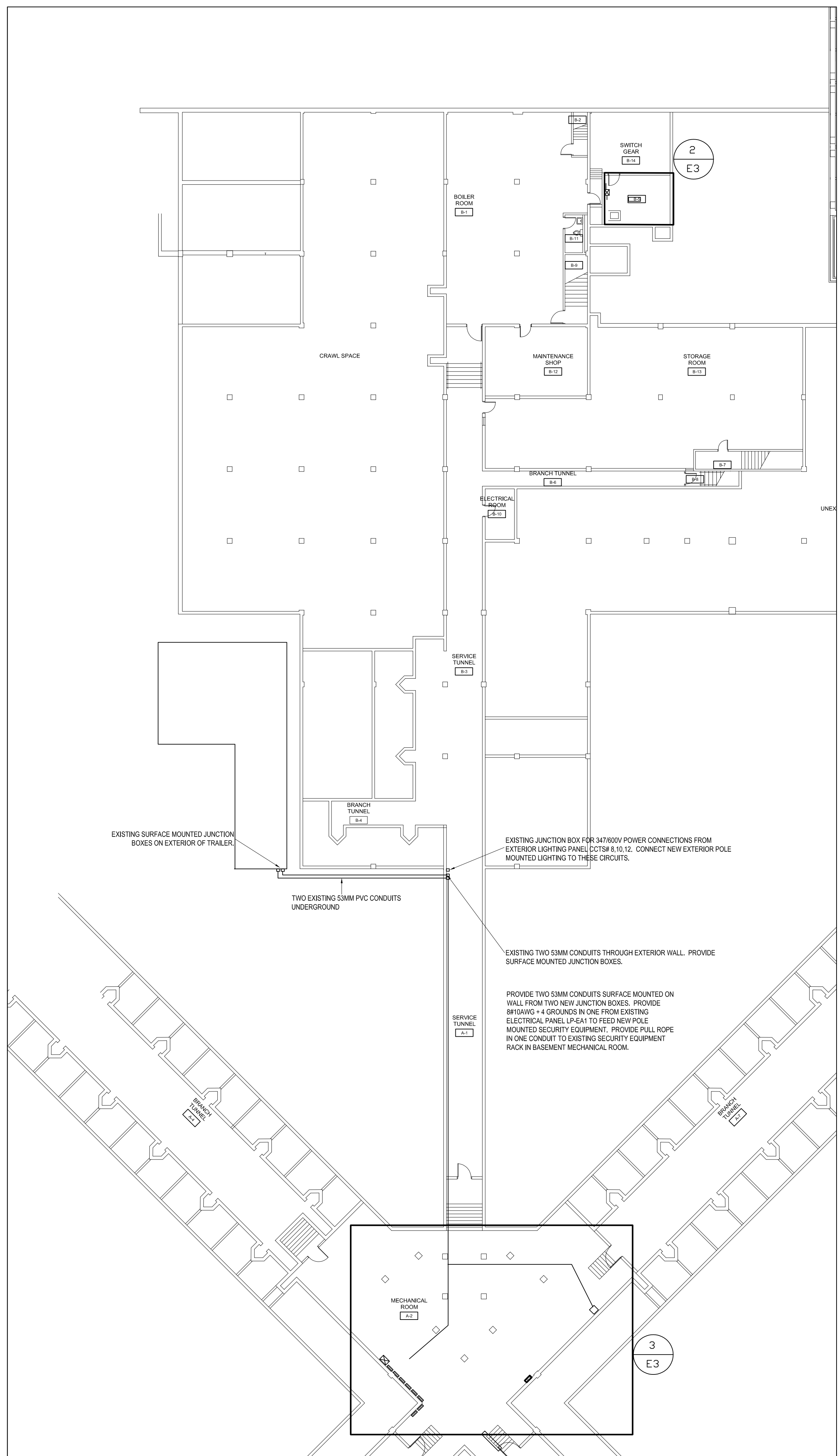
Client
MCSCS

Drawing Title
ELECTRICAL SITE PLAN - NEW WORK

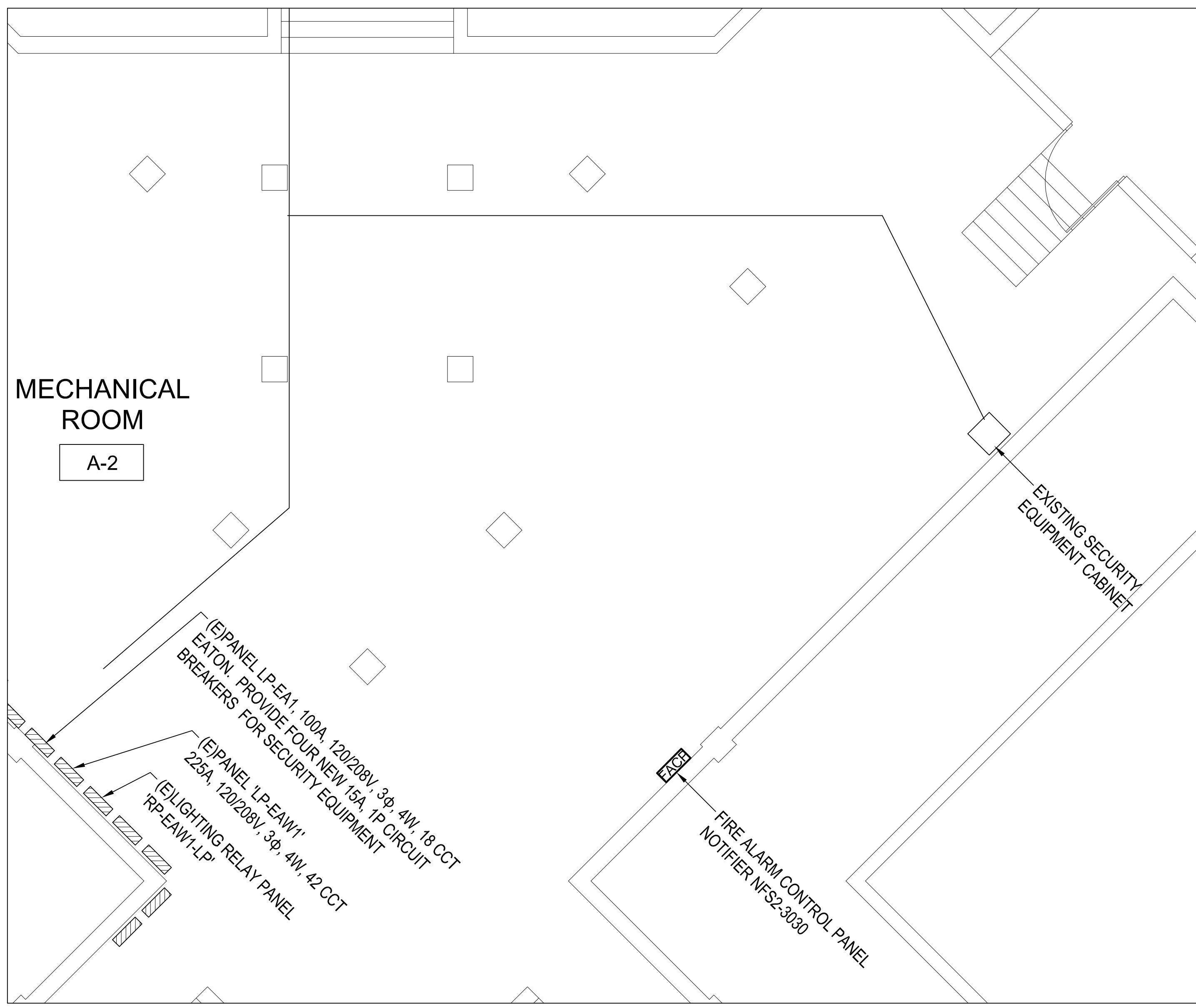
Scale AS NOTED	Date DECEMBER 2020
Drawn by E.YEH	Substantial Performance Date -
Designed by A.DEMINGS	Drawing No E2 of
Approved by	CADD File NAME

LUMINAIRE SCHEDULE									
TYPE	DESCRIPTION	CATALOGUE NUMBER (DESIGN BASIS)	LUMENS	TYPE	WATTS	COLOUR	VOLTS	MOUNTING	REMARKS
P2	POLE MOUNTED LUMINAIRE	SIGNIFY LUMECC 'ROADSTAR' #GPLS-32L700WW-G2-R2M-HVU-DMG-HS-BR	5,740	LED	71	3000K	347V	POLE	EXTERIOR POLE MOUNTED LUMINAIRE C/W DIE-CAST ALUMINUM HOUSING, THERMOSET POWDER COAT FINISH, ACRYLIC LENSES, 48 HIGH EFFICIENCY LONG-LIFE LEDs, ELECTRONIC DRIVER WITH 700MA DRIVE CURRENT, ZERO UPLIGHT, TYPE 2 MEDIUM DISTRIBUTION OPTICS, LOW EPA, SUITABLE FOR WET LOCATIONS, IP65 RATED, DARK BRONZE COLOURED FINISH. SLIP FITTER MOUNTING, MOUNTED ON 7.6 METRE TALL ABOVE GRADE PRECAST CONCRETE DIRECT BURIED POLE WITH 1.2 METER LONG ELLIPTICAL MOUNTING ARM
P3	POLE MOUNTED LUMINAIRE	SIGNIFY LUMECC 'ROADSTAR' #GPLS-32L700WW-G2-R3W-HVU-DMG-HS-BR	6,018	LED	71	3000K	347V	POLE	EXTERIOR POLE MOUNTED LUMINAIRE C/W DIE-CAST ALUMINUM HOUSING, THERMOSET POWDER COAT FINISH, ACRYLIC LENSES, 48 HIGH EFFICIENCY LONG-LIFE LEDs, ELECTRONIC DRIVER WITH 700MA DRIVE CURRENT, ZERO UPLIGHT, TYPE 3 WIDE DISTRIBUTION OPTICS, LOW EPA, SUITABLE FOR WET LOCATIONS, IP65 RATED, DARK BRONZE COLOURED FINISH. SLIP FITTER MOUNTING, MOUNTED ON 7.6 METRE TALL ABOVE GRADE PRECAST CONCRETE DIRECT BURIED POLE WITH 1.2 METER LONG ELLIPTICAL MOUNTING ARM
P4	POLE MOUNTED LUMINAIRE	SIGNIFY LUMECC 'ROADSTAR' #GPLS-48L700WW-G2-4-HVU-DMG-HS-BR	9,872	LED	106.5	3000K	347V	POLE	EXTERIOR POLE MOUNTED LUMINAIRE C/W DIE-CAST ALUMINUM HOUSING, THERMOSET POWDER COAT FINISH, ACRYLIC LENSES, 48 HIGH EFFICIENCY LONG-LIFE LEDs, ELECTRONIC DRIVER WITH 700MA DRIVE CURRENT, ZERO UPLIGHT, TYPE 4 DISTRIBUTION OPTICS, LOW EPA, SUITABLE FOR WET LOCATIONS, IP65 RATED, DARK BRONZE COLOURED FINISH. SLIP FITTER MOUNTING, MOUNTED ON 7.6 METRE TALL ABOVE GRADE PRECAST CONCRETE DIRECT BURIED POLE WITH 1.2 METER LONG ELLIPTICAL MOUNTING ARM

File: J:\S-Civil\2020-20-5060A - Colliers - 10 - ODDC Temporary Parking Lot Expansion\05 Drawings\11 Original\ELECTRICAL - Drawing 20-5060A - Elec-09\11.dwg | Layer: E3 | Plot Date: 21:14 PM, March 15, 2023 | 24x36in



2
E3 BASEMENT VAULT B BLOCK- ELECTRICAL ROOM
 SCALE: 1:50



3
E3 BASEMENT VAULT A BLOCK- ELECTRICAL ROOM
 SCALE: 1:50

1
E3 BASEMENT VAULT B BLOCK- ELECTRICAL ROOM
 SCALE: 1:200

KEY PLAN

No	Revisions	Date
04		
03		
02	99% DESIGN REVIEW	2023.03.15
01	90% DESIGN REVIEW	2022.12.23

Orientation Seal

The Contractor shall check and verify all dimensions and report all errors and omissions to the IO-Owner's/MBS Designee (as applicable) for his/her written direction before proceeding with the Work.

A	A Detail No
B	B Sheet No where detailed

PROJECT ENGINEER: CIVIL, STRUCTURAL, MECHANICAL & ELECTRICAL

J2g Consultants Inc.
 ENGINEERS - PLANNERS - PROJECT MANAGERS
 1150 MORRISON DRIVE, SUITE 410, OTTAWA, ON K2H 8S9
 PHONE: 613-828-7800 FAX: 613-828-2600
 J2g Project #: 20-5060A

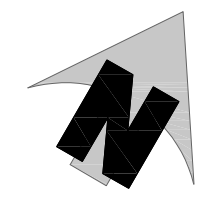
ARCHITECT:
DREESSEN CARDINAL ARCHITECTS INC.
 1350 WELLINGTON STREET WEST,
 OTTAWA, ON
 K1Y 3C1
 TEL 613-725-2294
 WWW.ARCHITECTSDCA.COM

AMIS N B
 Project
**OTTAWA CARLETON DETENTION CENTRE
 TEMPORARY PARKING LOT EXPANSION**
 Location
**INNES ROAD, GLOUCESTER TOWNSHIP
 OTTAWA**
 IO Project No Site No Building No

Client
MCSCS

Drawing Title
ELECTRICAL DETAILS

Scale AS NOTED	Date DECEMBER 2020
Drawn by E.YEH	Substantial Performance Date -
Designed by A.DEMMINGS	Drawing No E3 of
Approved by	CADD File NAME

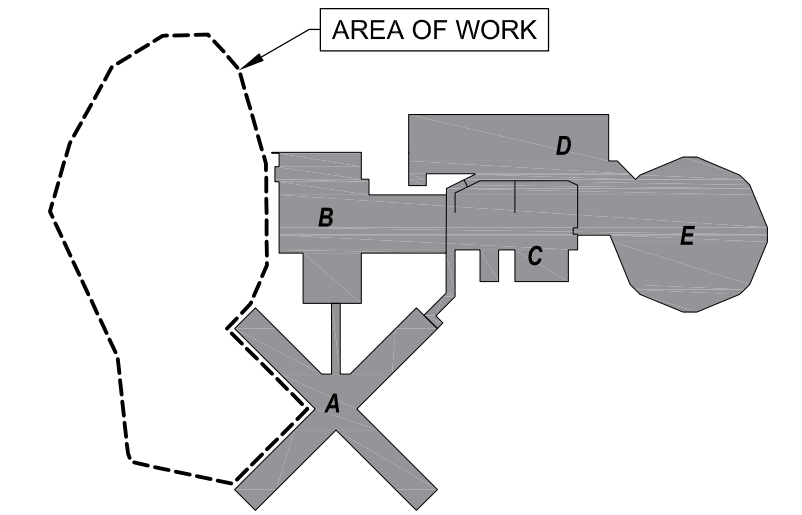


INNES ROAD

NOTES:

1. THESE CALCULATIONS ARE A SIMULATION OF REAL WORLD CONDITIONS. MANY FACTORS INCLUDING DIRT, LED AGE, WEATHER CONDITIONS AND LANDSCAPING WILL AFFECT THE ACTUAL MEASURED LIGHTING LEVELS ON THE SITE.
2. CALCULATED VALUES ARE IN LUX. CALCULATION POINTS ARE 2 M APART.
3. THESE CALCULATIONS DO NOT INCLUDE LIGHT FROM SOURCES OUTSIDE THE PROPERTY (STREET LIGHTS AND FROM ADJACENT PROPERTIES) NOR FROM BUILDING MOUNTED LIGHTS ON THIS PROPERTY.

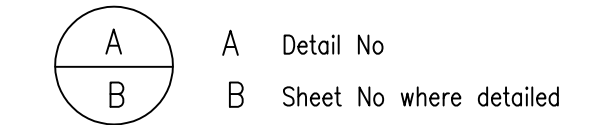
KEY PLAN



No	Revisions	Date
04		
03		
02	99% DESIGN REVIEW	2023.03.15
01	90% DESIGN REVIEW	2022.12.23

Orientation	Seal
-------------	------

The Contractor shall check and verify all dimensions and report all errors and omissions to the IO-Owner's/MBS Designee (as applicable) for his/her written direction before proceeding with the Work.



PROJECT ENGINEER: CIVIL, STRUCTURAL, MECHANICAL & ELECTRICAL

Jp2g Consultants Inc.
 ENGINEERS - PLANNERS - PROJECT MANAGERS
 1150 MORRISON DRIVE, SUITE 410, OTTAWA, ON K2H 8S9
 PHONE: 613-828-7800 FAX: 613-828-2600
 Jp2g Project #: 20-5060A

ARCHITECT:

DREESSEN CARDINAL ARCHITECTS INC.

1350 WELLINGTON STREET WEST,
 OTTAWA, ON
 K1Y 3C1

TEL 613-725-2294
 WWW.ARCHITECTSDCA.COM

AMIS N B

Project
 OTTAWA CARLETON DETENTION CENTRE
 TEMPORARY PARKING LOT EXPANSION

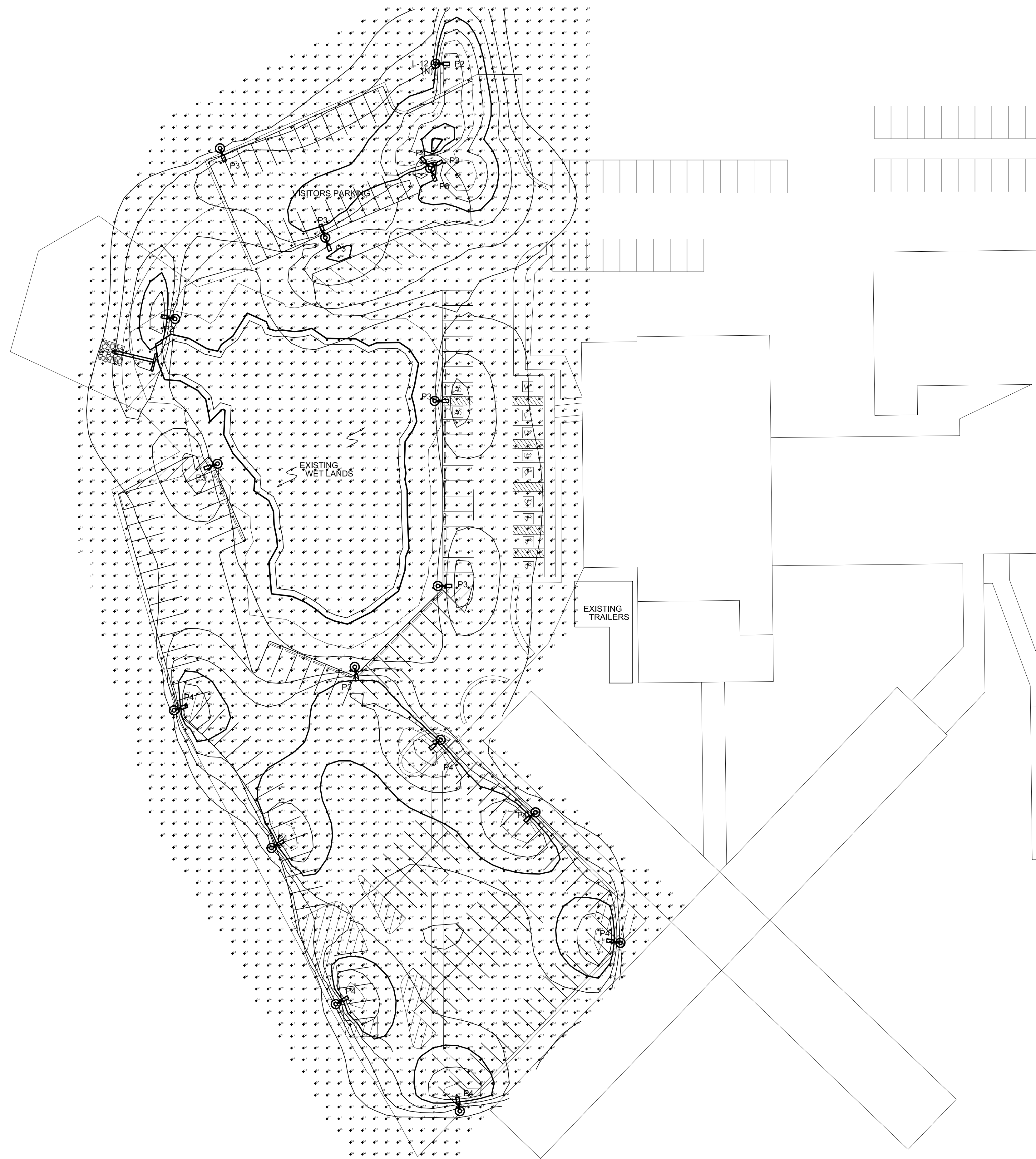
Location
 INNES ROAD, GLOUCESTER TOWNSHIP
 OTTAWA

IO Project No Site No Building No

Client
 MCSCS

Drawing Title
 ELECTRICAL SITE PLAN
 LIGHTING LEVEL CALCULATIONS

Scale AS NOTED	Date DECEMBER 2020
Drawn by E.YEH	Substantial Performance Date -
Designed by A.DEMMINGS	Drawing No E4 of
Approved by	CAD File NAME



1 SITE PLAN - LIGHTING CALCULATIONS
 SCALE: 1:400
 E4

File: J:\S-Civil\2020-20-5060A - Collars - IO - ODDC Temporary Parking Lot Expansion\Drawings\10\ongoing\ELECTRICAL - Drawing 20-5060A - Elec-01\NS1.dwg | Layer: E4 | Plot date: 3:14 PM March 15, 2023 | 24x36in