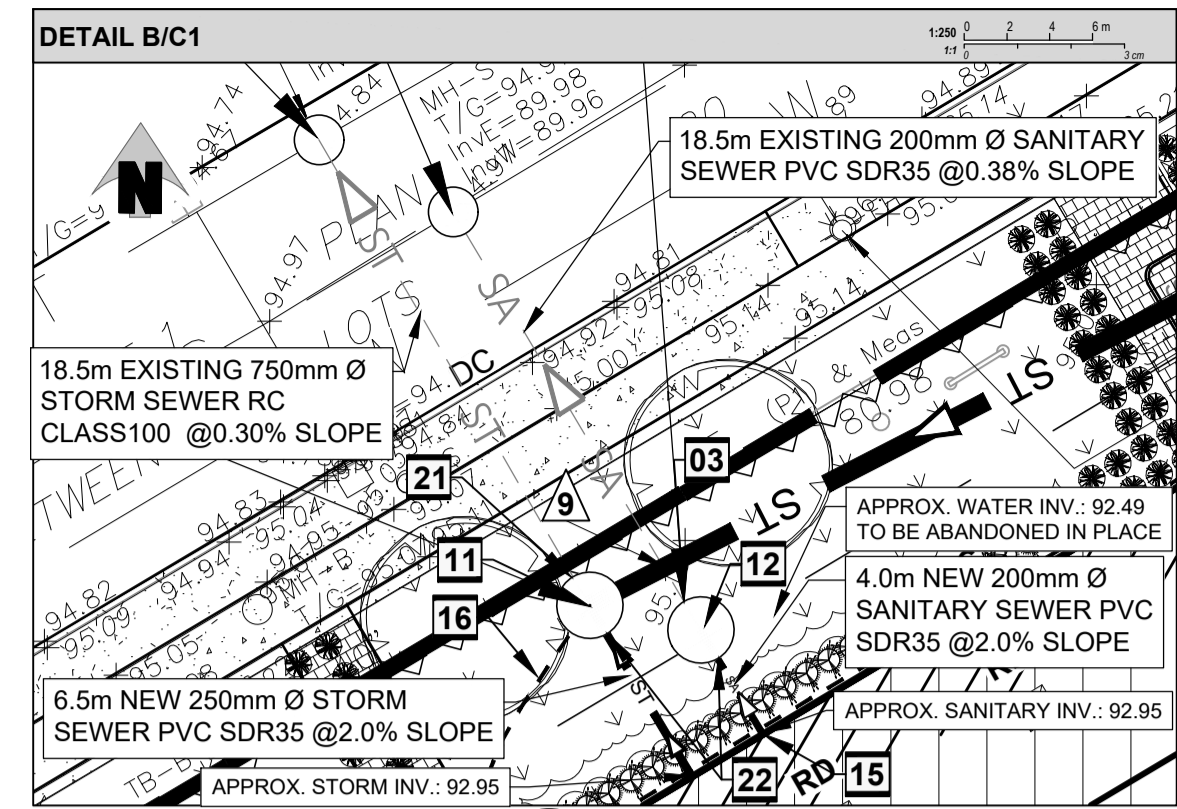
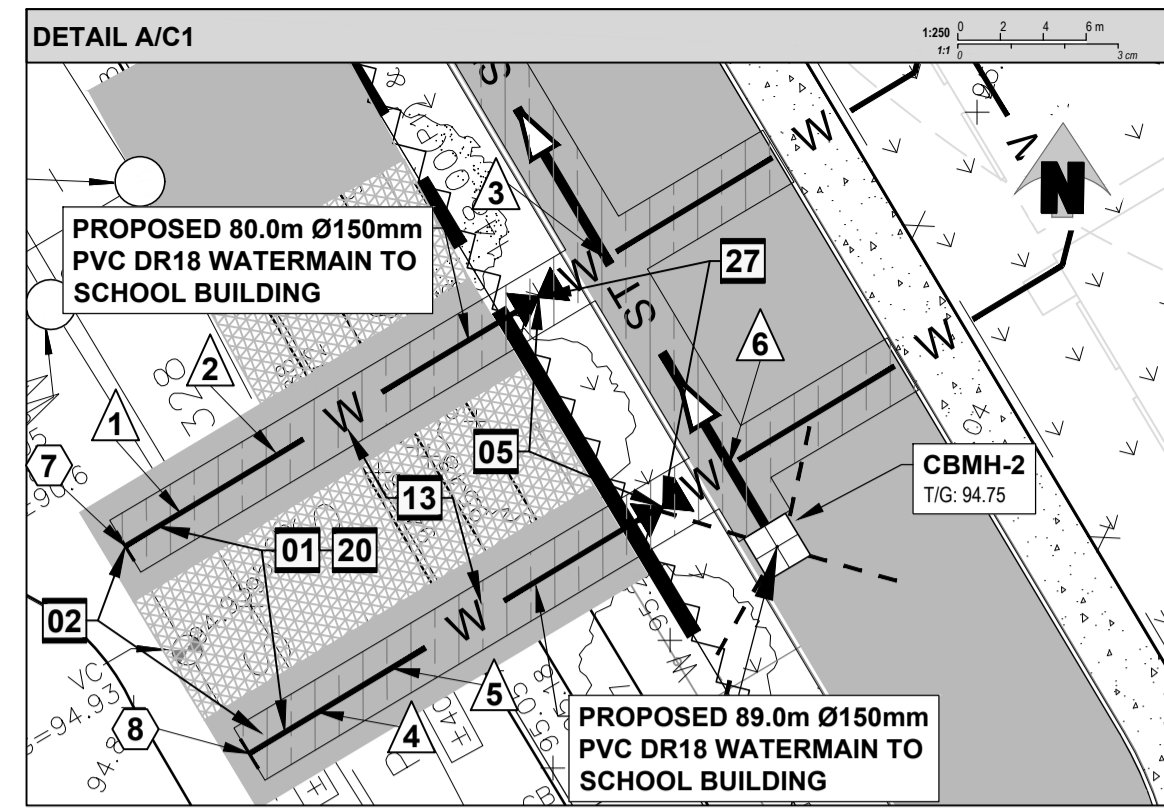


LEGEND	
	PROPERTY LINE
	EXISTING BUILDING
	DEPRESSED CURB
	BREAK OF SLOPE - NEW
	EXISTING SANITARY SEWER
	EXISTING STORM SEWER
	EXISTING WATERMAIN
	NEW SANITARY SEWER
	NEW STORM SEWER
	NEW WATERMAIN
	NEW FENCE
	NEW SILT FENCE
	NEW PERFORATED DRAIN PIPE
	NEW PERIMETER FOUNDATION DRAINAGE TO BE CONNECTED TO THE NEW STORM SEWER
	NEW LIGHT DUTY ASPHALT
	NEW HEAVY DUTY ASPHALT
	NEW CONCRETE SIDEWALK
	NEW GRASS
	NEW REINFORCED GRASS
	NEW INSULATION
	MILLING & OVERLAY 50mm THICK HEAVY DUTY ASPHALT AS PER CITY SPECS
	PRECAST PAVERS
	SEE SHEET NUMBER "C3"
	EXISTING CATCHBASIN
	EXISTING CATCHBASIN MANHOLE
	EXISTING MANHOLES
	NEW CATCHBASIN
	NEW CATCHBASIN MANHOLE
	NEW SANITARY MANHOLE
	NEW STORM MANHOLE
	NEW WATER VALVE
	NEW INLET CONTROL DEVICE
	NEW ROOF DRAIN
	NEW SCUPPER AT 150mm ABOVE ROOF DRAIN LEVEL
	SEWER FLOW DIRECTION
	BUILDING ENTRANCE
	FIRE HYDRANT
	SEWER CAP
	NEW SIAMESE CONNECTION



**A** DETAIL  
C1 Scale: 1:250

**B** DETAIL  
C1 Scale: 1:250

**APPROVED**  
By Lily Xu at 3:30 pm, Apr 04, 2023

**LILY XU, MCIP, RPP**  
MANAGER, DEVELOPMENT REVIEW SOUTH  
PLANNING, INFRASTRUCTURE & ECONOMIC  
DEVELOPMENT DEPARTMENT, CITY OF OTTAWA

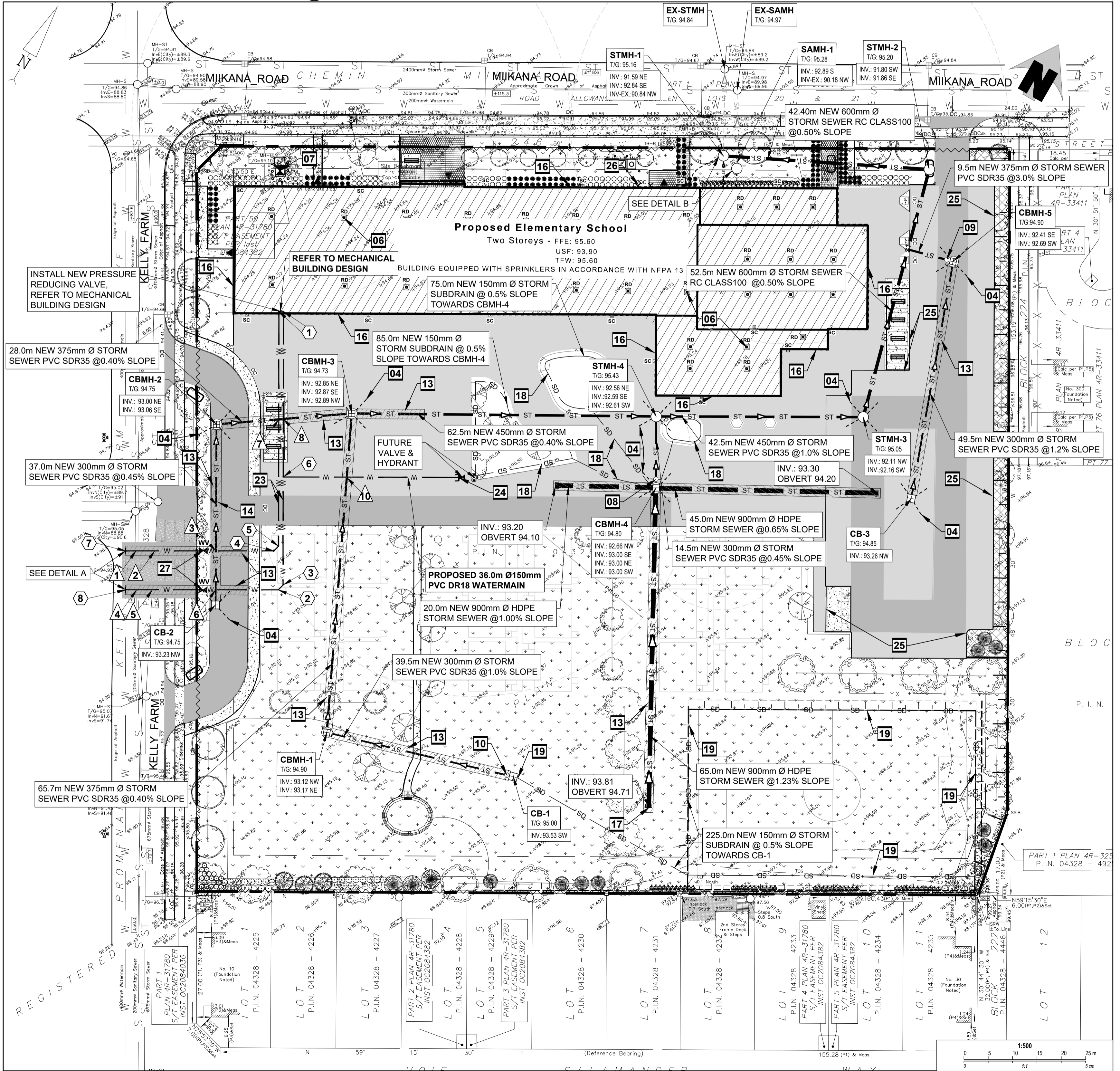


**DRAWING NOTES**

- SUPPLY AND INSTALL NEW 150mm Ø PVC DR18 WATER MAIN SERVICE, MINIMUM 2.4m COVER. OTHERWISE PROVIDE HD40 THERMAL INSULATION IN ACCORDANCE WITH CITY OF OTTAWA STANDARD DETAIL DRAWING W22. CONTRACTOR SHALL BE RESPONSIBLE FOR OBTAINING AND PAYING FOR A WATER PERMIT FROM THE CITY OF OTTAWA FOR INSPECTION, DISINFECTION (CHLORINATION) AND TESTING. COORDINATE NEW WATER SERVICE CONNECTION WITH MECHANICAL PLANS.
- INSTALLATION OF NEW SERVICE CONNECTION TEE TO EXISTING MUNICIPAL WATERMAIN TO BE COMPLETED BY CITY OF OTTAWA FORCES. EXCAVATION, BACKFILL AND RE-INSTATEMENT BY CONTRACTOR.
- EXISTING SANITARY STUB APPROXIMATE INVERT: 90.18 INVERTS TO BE CONFIRMED BY CONTRACTOR PRIOR TO CONSTRUCTION. CONTRACTOR TO PROVIDE UNDERGROUND UTILITY LOCATES BY DAYLIGHTING PRIOR TO CONSTRUCTION.
- INSTALL FOUR WAY 3.0m LONG 150mm Ø PERFORATED SUBDRAIN WRAPPED IN GEOTEXTILE SOCK EXTENDING FROM CBM/STUB AT PAVEMENT SUBGRADE LEVEL. PROVIDE WATERTIGHT CONNECTION.
- SUPPLY AND INSTALL NEW 150mm WATER VALVE AT PROPERTY LINE. VALVE BOX ASSEMBLY AS PER CITY OF OTTAWA STANDARD DETAIL DRAWING W24 AND W50.
- SUPPLY AND INSTALL WATTS ROOF DRAIN CONTROLS TO BE INSTALLED ON ROOF DRAINS. MAXIMUM DISCHARGE 55.5 l/s TOTAL. MAXIMUM ROOF PONDING DEPTH 0.15m. REFER TO MECHANICAL PLANS FOR SPECIFIC ROOF SETTINGS. 5-YEAR PONDING VOLUME: 27m<sup>3</sup>. 100-YEAR PONDING VOLUME: 38m<sup>3</sup>.
- EXISTING TRANSFORMER AND BOLLARDS TO REMAIN.
- SUPPLY AND INSTALL NEW INLET CONTROL DEVICE FLOW REGULATOR AT CATCHBASIN MANHOLE, CBM-4 OUTLET. MAXIMUM DISCHARGE 39.9 l/s AT 2.33m HEAD AND ORIFICE DIAMETER AT 111mm.
- SUPPLY AND INSTALL NEW INLET CONTROL DEVICE FLOW REGULATOR AT CATCHBASIN, CB-1 OUTLET. MAXIMUM DISCHARGE 45 l/s AT 1.56m HEAD AND ORIFICE DIAMETER AT 109mm.
- INSTALL NEW STORM MANHOLE, STMH-3 AND 250mm Ø STUB. PROVIDE WATERTIGHT CONNECTION.
- INSTALL NEW SANITARY MANHOLE, SAMH-1 AND 200mm Ø SANITARY SEWER PIPE FROM BUILDING TO CONNECT THE EXISTING 200mm Ø STUB. PROVIDE WATERTIGHT CONNECTION.
- PROVIDE 100mm HIGH LOAD RIGID INSULATION PLACED WITHIN SUBGRADE. INSULATION SHALL BE 2.0m WIDE ABOVE PIPE WHERE INDICATED.
- INSTALL NEW STORM MANHOLE, STMH-1 AND 675mm Ø STORM SEWER PIPE TO CONNECT TO THE EXISTING STORM MANHOLE EX-STMH AT INVERT 91.15. PROVIDE WATERTIGHT CONNECTION.
- CONNECT SERVICES TO INTERIOR PLUMBING 1.0m FROM BUILDING FOUNDATION. REFER TO MECHANICAL AND ARCHITECTURAL PLANS.
- NEW PERIMETER FOUNDATION DRAINAGE (REFER TO ARCHITECTURAL) TO BE CONNECTED TO THE NEW STORM SEWER.
- SUPPLY AND INSTALL NEW 900mm Ø HDPE STORMWATER STORAGE PIPE COMPLETE WITH NEW 900mm Ø CAP AT APPROXIMATE INVERT: 92.80m FOR STORMWATER MANAGEMENT PURPOSES.
- SUPPLY AND INSTALL NEW 150mm Ø PERFORATED DRAIN PIPE CW FILTER SOCK AS PER CITY DETAIL S9. CONNECT SUBDRAIN TO CBM-4. PROVIDE WATERTIGHT CONNECTION.
- SUPPLY AND INSTALL NEW 150mm Ø PERFORATED DRAIN PIPE CW FILTER SOCK. CONNECT SOCCER FIELD SUBDRAIN TO CB-1. PROVIDE WATERTIGHT CONNECTION.
- SUPPLY AND INSTALL NEW WATERMAIN IN ACCORDANCE WITH CITY OF OTTAWA STANDARD DETAIL DRAWING W50 (TYPICAL PRIVATE SERVICE >100mm CONNECTION PROCEDURE).
- EXISTING STORM STUB APPROXIMATE INVERT: 90.84. INVERTS TO BE CONFIRMED BY CONTRACTOR PRIOR TO CONSTRUCTION. CONTRACTOR TO PROVIDE UNDERGROUND UTILITY LOCATES BY DAYLIGHTING PRIOR TO CONSTRUCTION.
- SUPPLY AND INSTALL BACKFLOW VALVES ON SANITARY AND STORM BUILDING CONNECTION AS PER CITY OF OTTAWA REQUIREMENT. CONTRACTOR TO PROVIDE SHOP DRAWINGS FOR PRO-FLEX PROCO 790 DUCK-BILL TYPE AS FOLLOWS:
  - SANITARY BACKWATER VALVE, 8" SIZE (200mm).
  - STORM BACKWATER VALVE, 10" SIZE (250mm).
  - VALVE CLAMP LOCATIONS AT DISCHARGE.
- ALL WATERMAIN SHALL BE PROVIDED WITH TRACER WIRE AS PER CITY OF OTTAWA STANDARD DETAILS AND SPECIFICATIONS.
- INSTALL UNDERGROUND CAP WITH METAL BOX FOR CONNECTION TO THE FUTURE FIRE HYDRANT VALVE.
- SUBDRAINS SHOULD BE INSTALLED ON THE SIDES OF THE ACCESS ROAD AND PARKING AREA. SEE GEOTECHNICAL NOTES AND REFER TO GEOTECHNICAL REPORT.
- NEW SIAMESE CONNECTION.
- INSTALL NEW DISTRICT METER AREA (DMA) CHAMBER AND VALVE AS PER CITY OF OTTAWA STANDARD DETAIL DRAWING W3.

**GENERAL NOTES**

- DESIGN AND CONSTRUCTION IS TO BE IN ACCORDANCE WITH MOST RECENT ONTARIO BUILDING CODE.
- THE CONTRACTOR IS RESPONSIBLE FOR CHECKING AND VERIFYING ALL DIMENSIONS WITH RESPECT TO SITE CONDITIONS AND ALL MATERIALS TO THE PROJECT. ANY DISCREPANCY SHALL BE REPORTED TO THE ENGINEER.
- THIS DRAWING IS TO BE READ IN CONJUNCTION WITH ALL MATERIAL RELEVANT TO THE PROJECT.
- ADDITIONAL DRAWINGS MAY BE ISSUED FOR CLARIFICATION TO ASSIST PROPER EXECUTION OF WORK. SUCH DRAWINGS WILL HAVE THE SAME MEANINGS AND INTENT AS IF THEY WERE INCLUDED WITH THE CONTRACT DOCUMENTS.
- CONTRACTOR MUST COMPLY WITH LOCAL BY-LAWS, ONTARIO OCCUPATIONAL HEALTH AND SAFETY ACT AND ALL REGULATIONS SET BY AUTHORITIES HAVING JURISDICTION. IN CASE OF CONFLICT OR DISCREPANCY, THE MORE STRINGENT REQUIREMENTS SHALL APPLY.
- CONTRACTOR RESPONSIBLE FOR OBTAINING ALL REQUIRED UTILITY LOCATES, DAYLIGHTING, INSPECTIONS, PERMITS, AND APPROVALS, INCLUDING ALL ASSOCIATED COSTS. LOCATION OF EXISTING UTILITIES ARE APPROXIMATE ONLY AND BASED ON BEST AVAILABLE INFORMATION.



No.	DESCRIPTION	YYYY-MM-DD
6	ISSUED FOR SITE PLAN CONTROL REV-4	2023-03-30
5	ISSUED FOR SITE PLAN CONTROL REV-3	2023-03-07
4	ISSUED FOR PERMIT REVIEW	2023-01-20
3	ISSUED FOR TENDER ISSUANCE	2022-11-18
2	ISSUED FOR SITE PLAN CONTROL REV-2	2022-10-27
1	ISSUED FOR SITE PLAN CONTROL REV-1	2022-06-28

**N45 ARCHITECTURE INC.**  
71 Bank Street, 7<sup>th</sup> Floor - Ottawa, Ontario K1P 5N2  
tel. 613.224.0095 fax 613.224.9811

project  
**Findlay Creek #2 Public School**  
820 Miikana Road, Ottawa, Ontario  
K1X 0G5

seal

drawing title Site Servicing Plan	scale As shown	date June 2022	project number 22-719	drawn by R.I.	checked by A.S.	drawing number <b>C1</b>	revision
--------------------------------------	-------------------	-------------------	--------------------------	------------------	--------------------	-----------------------------	----------

CONTRACTOR TO VERIFY ALL DIMENSIONS AND NOTIFY THE ARCHITECT OF ANY DISCREPANCIES BEFORE WORK COMMENCES.  
DO NOT SCALE DRAWINGS.