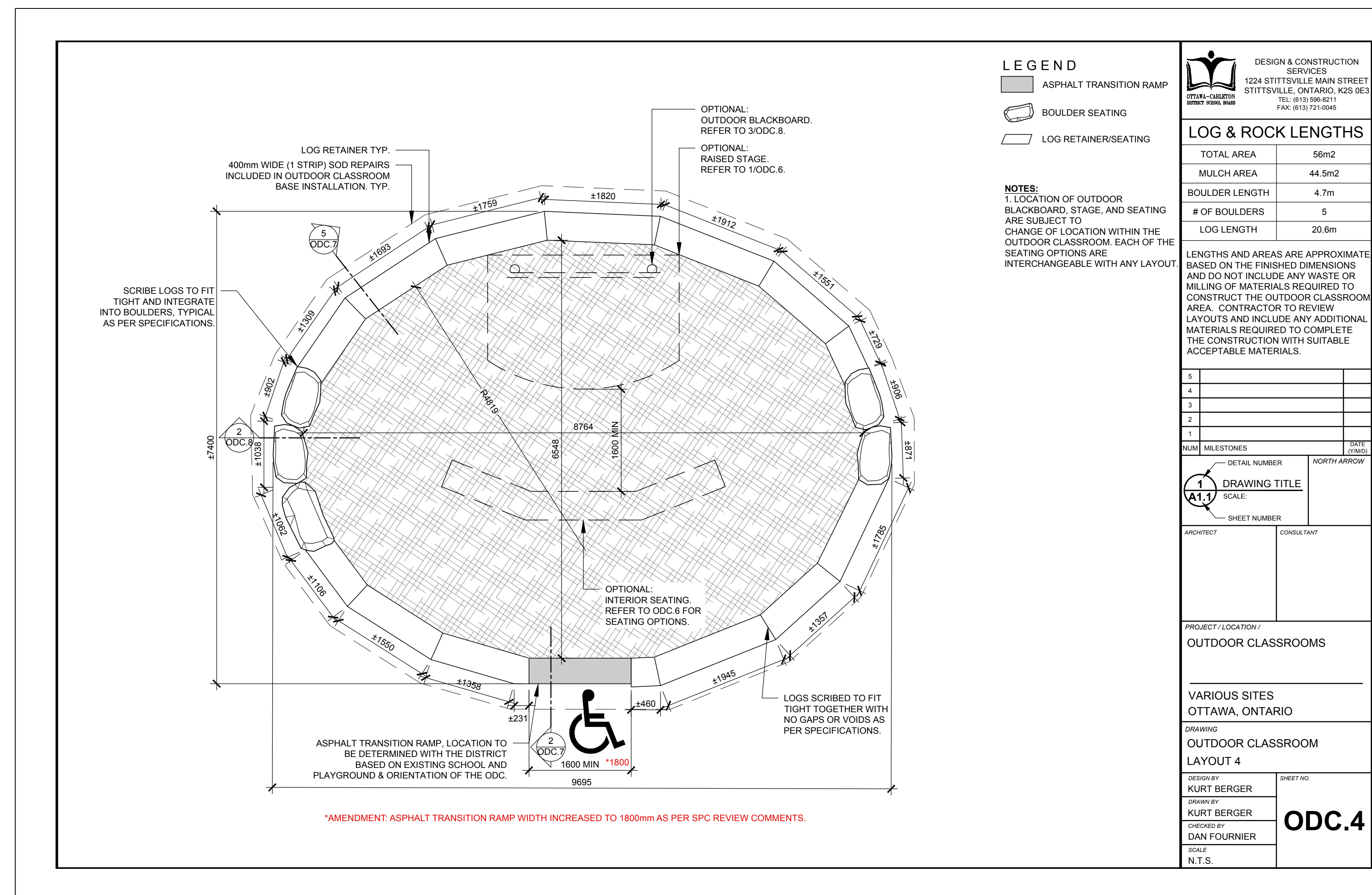


*Lily Xu*

**APPROVED**  
By Lily Xu at 3:27 pm, Apr 04, 2023

LILY XU, MCIP, RPP  
MANAGER, DEVELOPMENT REVIEW SOUTH  
PLANNING, INFRASTRUCTURE & ECONOMIC  
DEVELOPMENT DEPARTMENT, CITY OF OTTAWA



**GENERAL NOTES**

- All general site information and conditions compiled from existing plans, surveys and consultant's field notes. Report all discrepancies prior to any work. No responsibility is born by the Consultant for unknown subsurface conditions.
- The location of the utilities is approximate only, and the exact location should be determined by consulting the municipal authorities and utility companies concerned. The Contractor shall prove the location of utilities and shall be responsible for adequate protection from damage.
- All dimensions shown are to be verified on site prior to any construction. No deviations are to be made from the layouts as shown on this plan without prior consultation with the Landscape Architect and Owner.
- Obtain approval of Landscape Architect for granular base and layout of all pavement areas prior to construction.
- Stake planting locations and receive approval of Landscape Architect, prior to excavation of any planting pits. No substitutions of plant material shall be made without prior approval of the Landscape Architect.
- Where clay is encountered proper drainage must be ensured in tree/shrub pits, prior to planting. Have method approved by Landscape Architect.
- All sodded areas to receive a minimum of 150mm of topsoil over graded sub-base. If sod with mesh is used, mesh to be removed completely during sodding operations. Sod shall come from an approved source and shall be laid within 24 hours of being cut in the nursery. Only nursery sod shall be used.
- Final subgrade is to approved by the Landscape Architect prior to sod being laid.
- Maintain positive surface runoff through the entire construction period.
- Reinstall all areas and items damaged as a result of construction activities.

06		
05		
04		
03	Re-issued for Site Plan Control	2023/02/17
02	Re-issued for Site Plan Control	2022/11/04
01	Issued for Site Plan Control	2022/06/28
no.	revision	date

**N45 ARCHITECTURE INC.**  
71 Bank Street, 7th Floor - Ottawa, Ontario, K1P 5N2  
tel. 613.224.0095 fax 613.224.9811

**Ruhland & Associates Ltd**  
landscape architecture • urban design • site planning  
Ph 613-224-4744 Fx 613-224-1131 info@rala.ca www.rala.ca

FINDLAY CREEK #2 PUBLIC SCHOOL  
OTTAWA-CARLETON DISTRICT SCHOOL BOARD  
820 MIKANA ROAD  
OTTAWA, ON

north seal

**DETAILS**

scale	1:400	drawn by	A.A / T.F
date	2020-12-18	checked by	M.R.
project number	N45 20-600	drawing number	<b>L-03</b>
RA	20-1631	revision	

CONTRACTOR TO VERIFY ALL DIMENSIONS AND NOTIFY THE ARCHITECT OF ANY DISCREPANCIES BEFORE WORK COMMENCES.

DO NOT SCALE DRAWINGS

