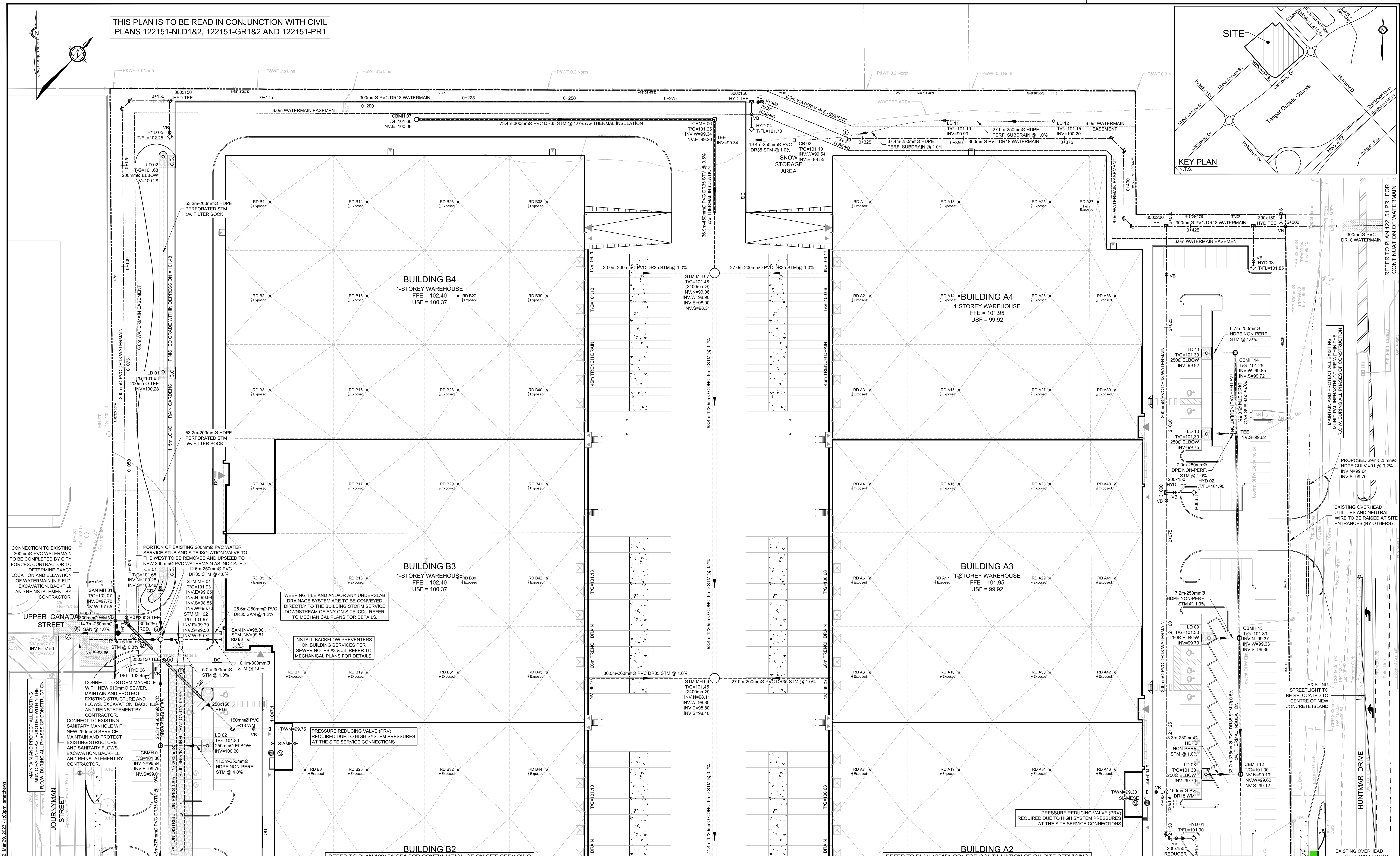
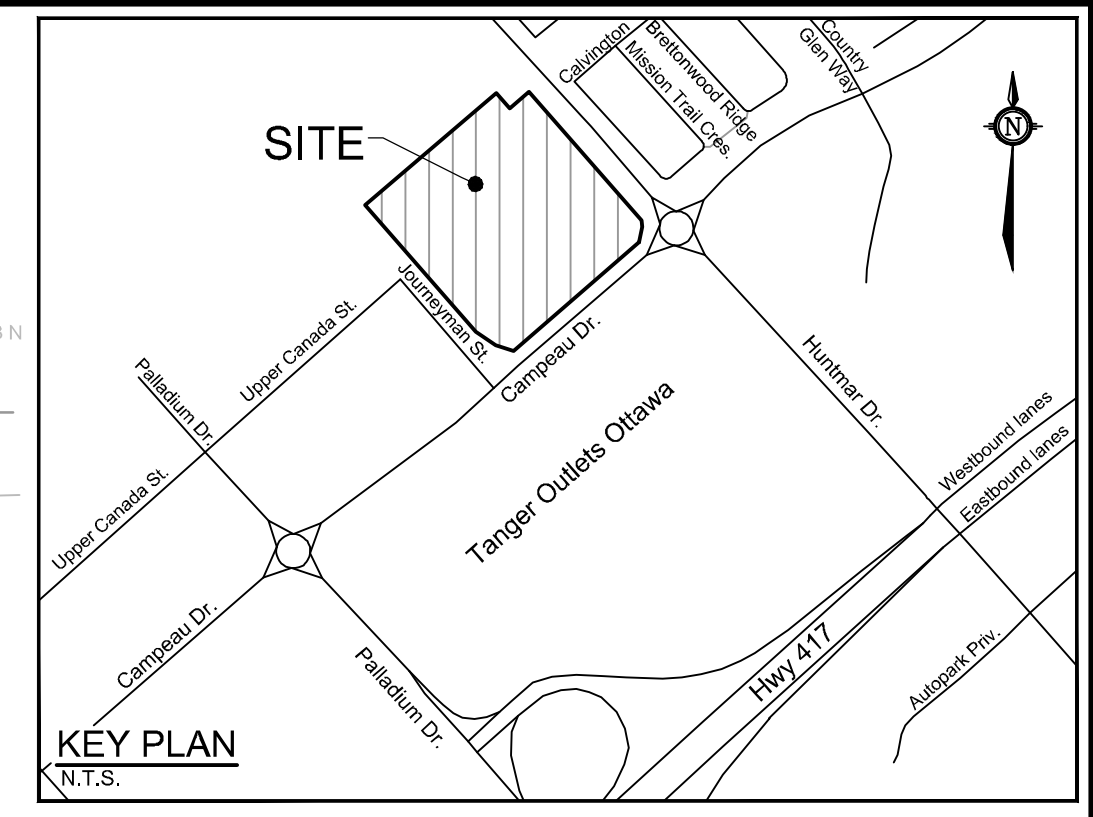


THIS PLAN IS TO BE READ IN CONJUNCTION WITH CIVIL PLANS 122151-NLD1&2, 122151-GR1&2 AND 122151-PR1



NOTE:
THE POSITION OF ALL POLE LINES, CONDUITS, WATERMANS, SEWERS AND OTHER UNDERGROUND AND OVERGROUND UTILITIES AND STRUCTURES IS NOT NECESSARILY SHOWN ON THE CONTRACT DRAWINGS, AND WHERE SHOWN, THE ACCURACY OF THE POSITION OF SUCH UTILITIES AND STRUCTURES IS NOT GUARANTEED. BEFORE STARTING WORK, DETERMINE THE EXACT LOCATION OF ALL SUCH UTILITIES AND STRUCTURES AND ASSUME ALL LIABILITY FOR DAMAGE TO THEM.

No.	REVISION	DATE	BY
2	REVISED PER CITY COMMENTS	MAR 30/23	DDB
1	ISSUED FOR CITY OF OTTAWA REVIEW	DEC 16/22	DDB

SCALE	DESIGN	CHECKED	DRAWN	CHECKED	APPROVED
1:400	SM / BM / DDB	DDB	DDB	SM	BM / DDB
1:400					DDB

FOR REVIEW ONLY

SCALE 1:400

PROFESSIONAL ENGINEER
D. D. BLAIR
100122737
PROVINCE OF ONTARIO

NOVATECH
Engineers, Planners & Landscape Architects
Suite 200, 240 Michael Cowpland Drive
Ottawa, Ontario, Canada K2M 1P6
Telephone: (613) 254-2643
Facsimile: (613) 254-5867
Website: www.novatech-eng.com

LOCATION
CITY OF OTTAWA
405 HUNTMAR DRIVE - WAREHOUSE DEVELOPMENT

DRAWING NAME
GENERAL PLAN OF SERVICES

PROJECT No. 122151
REV # 2
DRAWING No. 122151-GP2

D07-12-22-0186

#18906