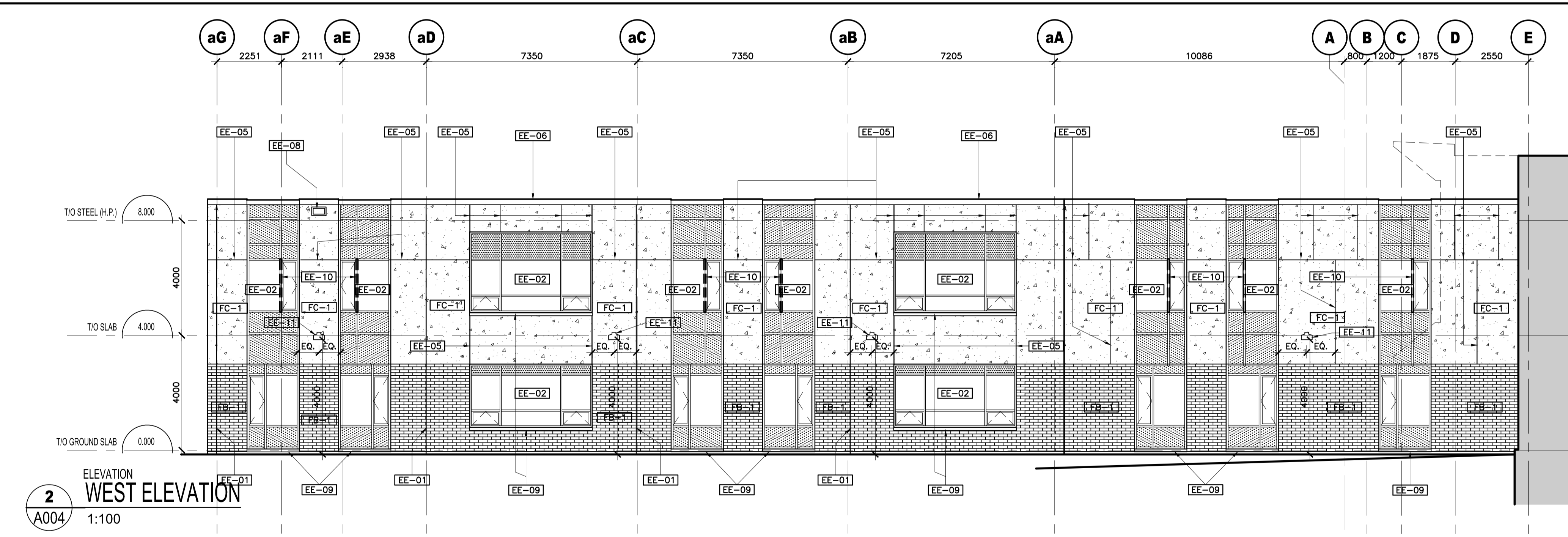
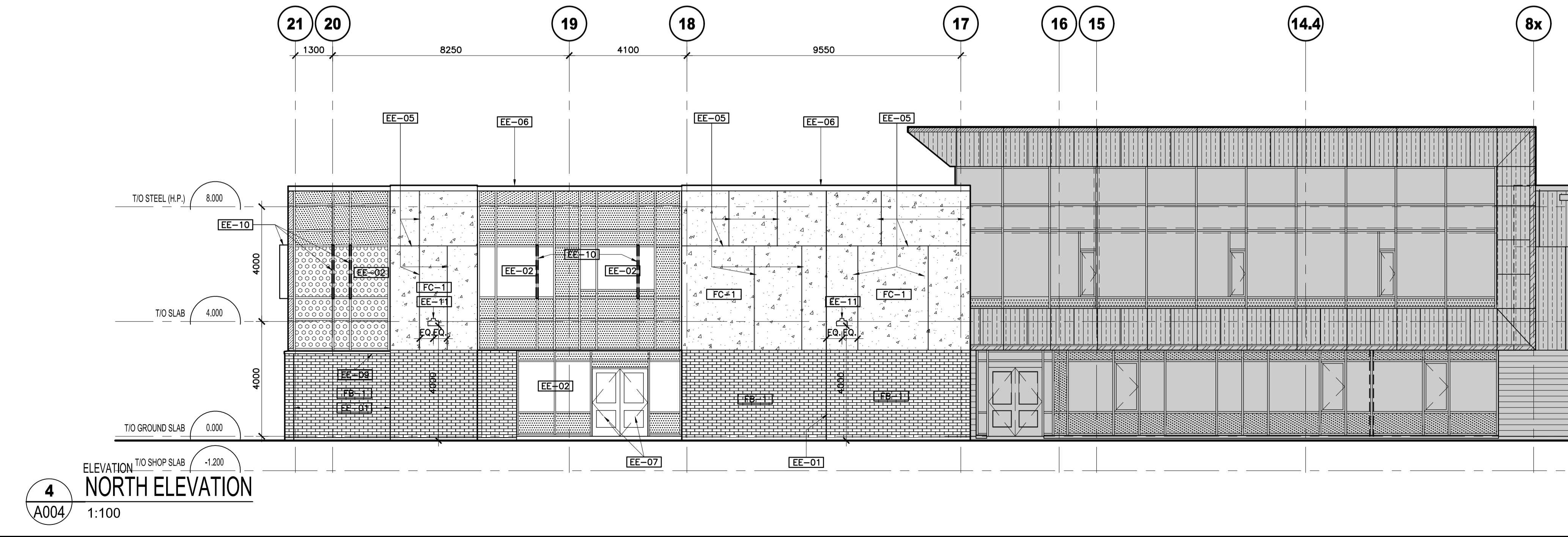


1 EAST ELEVATION
A004 1:100



2 WEST ELEVATION
A004 1:100



4 NORTH ELEVATION
A004 1:100

ELEVATION LEGEND

- INSULATED SPANDEL PANEL GLAZING WITH INSULATED BACK PAN BEHIND IN ALUMINUM CURTAIN WALL.
- VISION INSULATED GLASS UNITS IN ALUMINUM CURTAIN WALL.
- PRIVACY FILM INSTALLED ON INSIDE FACE OF VISION INSULATED GLASS UNITS.
- VISION INSULATED GLASS UNITS WITH CERAMIC FRIT COATED GLASS.
- TILT-UP CONCRETE PANEL WITH BRICK VENEER TYPE 1.
- TILT-UP CONCRETE PANEL WITH CONCRETE FINISH.
- RE-USED EXISTING PHENOLIC PANELS.
- TILT-UP PANEL BRICK VENEER TYPE 1.
- TILT-UP PANEL CONCRETE FINISH.
- RE-USED EXISTING PHENOLIC PANELS, GROUPED TOGETHER. REFER TO DEMOLITION ELEVATION DRAWING.

ELEVATION NOTES

- EE-1 19MM CONTROL JOINT BETWEEN TILT-UP PANELS
- EE-2 CURTAIN WALL SYSTEM, REFER TO WINDOW SCHEDULE
- EE-3 STRUCTURAL CONCRETE WYTHE BEHIND SPANDEL PANEL
- EE-4 TYPICAL 10mm PHENOLIC PANEL REVEALS
- EE-5 19MM WIDE REVEAL IN TILT-UP CONCRETE PANEL
- EE-6 PRE-FINISHED METAL CAP FLASHING
- EE-7 ALUMINUM SWING DOOR
- EE-8 ROOF OVERFLOW SCUPPER, SEE DETAILS ON A106
- EE-9 TYPICAL 2MM BRAKE FORMED ALUMINUM SILL FLASHING
- EE-10 300MM EXTRUDED ALUMINUM EXTENSION CURTAIN WALL CAP. REFER TO SPECIFICATIONS
- EE-11 EXTERIOR WALL MOUNTED LIGHT FIXTURE. REFER TO ELECTRICAL

1	1	2023/03/22	RE-ISSUED FOR SITE PLAN CONTROL
1	0	2022/11/01	ISSUED FOR SITE PLAN CONTROL

LES IDÉES, CONCEPTS, DISPOSITIONS ET PLANS MONTRÉS OU REPRÉSENTÉS PAR CE DESSIN APPARTIENNENT À EDWARD J. CUHACI AND ASSOCIATES ARCHITECTS INC. ET ONT ÉTÉ CRÉÉS ET DÉVELOPPÉS POUR ÊTRE UTILISÉS DANS LE CADRE DU PRÉSENT PROJET. ILS NE DOIVENT PAS ÊTRE UTILISÉS À D'AUTRES FINS NI COMMUNIQUÉS À QUI QUE CE SOIT SANS LA PERMISSION ÉCRITE DE EDWARD J. CUHACI AND ASSOCIATES ARCHITECTS INC.

L'ARCHITECTE DÉCLINE TOUTE RESPONSABILITÉ DÉCOULANT DE PROBLÈMES FAISANT SUITE AU NON-RESPECT DES PLANS ET DEVIS OU DE L'INTENTION DU CONCEPT QU'ILS TRANSMETTENT OU DE TOUTS PROBLÈMES POUVANT RÉSULTER DU DÉFAUT DE TIERS D'OBTENIR OU DE SUIVRE LES INSTRUCTIONS DE L'ARCHITECTE RELATIVEMENT AUX ERREURS, OMISSIONS, INCOHÉRENCES, AMBIGUITÉS OU CONTRADICTIONS ALLÉGUÉES.

L'ENTREPRENEUR DOIT VÉRIFIER TOUTES LES DIMENSIONS SUR PLACE ET INFORMER L'ARCHITECTE DE TOUT ÉCART AVANT LE DÉBUT DES TRAVAUX. NE PAS MESURER LES DESSINS À L'ÉCHELLE.

ALL IDEAS, DESIGNS, ARRANGEMENTS, AND PLANS INDICATED OR REPRESENTED BY THIS DRAWING ARE OWNED BY AND THE PROPERTY OF EDWARD J. CUHACI AND ASSOCIATES INC. AND WERE CREATED, EVOLVED, AND DEVELOPED FOR USE ON AND IN CONNECTION WITH THE SPECIFIED PROJECT. NONE OF THE IDEAS, DESIGNS, ARRANGEMENTS OR PLANS SHALL BE USED BY OR DISCLOSED TO ANY PERSON, FIRM, OR CORPORATION FOR ANY PURPOSE WHATSOEVER WITHOUT THE WRITTEN PERMISSION OF EDWARD J. CUHACI AND ASSOCIATES INC.

THE ARCHITECT WAIVES ANY AND ALL RESPONSIBILITY AND LIABILITY FOR PROBLEMS WHICH ARISE FROM FAILURE TO FOLLOW THESE PLANS, SPECIFICATIONS, AND THE DESIGN INTENT THEY CONVEY, OR FOR PROBLEMS WHICH ARISE FROM OTHERS' FAILURE TO OBTAIN AND/OR FOLLOW THE ARCHITECT'S GUIDANCE WITH RESPECT TO ANY ERRORS, OMISSIONS, INCONSISTENCIES, AMBIGUITIES OR CONFLICTS WHICH ARE ALLEGED.

CONTRACTOR TO VERIFY ALL DIMENSIONS AND NOTIFY THE ARCHITECT OF ANY DISCREPANCIES BEFORE WORK COMMENCES. DO NOT SCALE DRAWINGS

EDWARD J. CUHACI & ASSOCIATES ARCHITECTS Inc.
171 Slater St, Suite 100, Ottawa, Ontario, K1P 5H7
Fax: (613) 236-1944 Telephone: (613) 236-7155 E-mail: info@juhaci.com

PROJECT TITLE/TITRE DU PROJET
ÉCOLE SECONDAIRE CATHOLIQUE PAUL-DESMARIS - ADDITION
5315 ABBOTT STREET EAST
OTTAWA, ON

CONSEIL DES ÉCOLES CATHOLIQUES DU CENTRE-EST
4000, RUE LABELLE, OTTAWA, ON K1J 1A1

DRAWING TITLE/TITRE DU DESSIN
ELEVATIONS

SCALE ÉCHELLE	1:500	PROJ. No	2219	ISSUE No	1	REV. No	1
DRAWN BY DESSINÉ PAR	S.J.	DRAWING/DESSIN					A004
CHECKED BY VÉRIFIÉ PAR	J.J.						
DATE	JANUARY 2022	FICHER ACAD FILE: 2219-A004_SPC.dwg					