

SURVEYOR'S REAL PROPERTY REPORT

PART 1 Plan of
LOTS 184 AND 185
REGISTERED PLAN 246
CITY OF OTTAWA

Surveyed by Annis, O'Sullivan, Vollebek Ltd.

Scale 1 : 150



Metric
DISTANCES SHOWN ON THIS PLAN ARE IN METRES AND
CAN BE CONVERTED TO FEET BY DIVIDING BY 0.3048

Surveyor's Certificate

- I CERTIFY THAT:
- This survey and plan are correct and in accordance with the Surveys Act and the Surveyors Act and the regulations made under them.
 - The survey was completed on the 20th day of December, 2022.

DEC 21, 2022
Date

J. E. Anderson
J. E. Anderson
Ontario Land Surveyor

PART 2
THIS PLAN MUST BE READ IN CONJUNCTION WITH
SURVEY REPORT DATED: December 21, 2022

ANNIS, O'SULLIVAN, VOLLEBEK LTD. grants to Mark Holdings Inc. ("The Client"), their solicitors, mortgagees, and other related parties, permission to use original, signed, sealed copies of the Surveyor's Real Property Report in transactions involving The Client.

Notes & Legend

Denotes	
□	Survey Monument Planted
■	Survey Monument Found
SIB	Standard Iron Bar
SSIB	Short Standard Iron Bar
IB	Iron Bar
CC	Cut Cross
CP	Concrete Pin
IB#	Round Iron Bar
(WIT)	Witness
Meas.	Measured
(AOG)	Annis, O'Sullivan, Vollebek Ltd.
(PI)	Registered Plan 246
(P2)	(857) Plan Dated March 8, 2008
(P3)	5R-13104
○ MH-ST	Maintenance Hole (Storm Sewer)
○ MH-S	Maintenance Hole (Sanitary)
— ST —	Underground Storm Sewer
— S —	Underground Sanitary Sewer
— OHW —	Overhead Wires
○ UP	Utility Pole
□ CB	Catch Basin
□ T/G	Top of Grate
□ GM	Gas Meter
□ HM	Water Meter
○	Deciduous Tree
○	Diameter
○	Bollard
CLF	Chain Link Fence
BF	Board Fence
GR	Guard Rail
EOA	Edge of Asphalt
+ 66.00	Location of Elevations
+ 66.00*	Top of Concrete Curb Elevation
C/L	Centreline
—	Property Line

Bearings are grid, derived from Can-Net 2016 Real Time Network GPS observations referenced to Specified Control Points 01919680105 and 019196434761, MTM Zone 9 (76°30' West Longitude) NAD-83 (original).

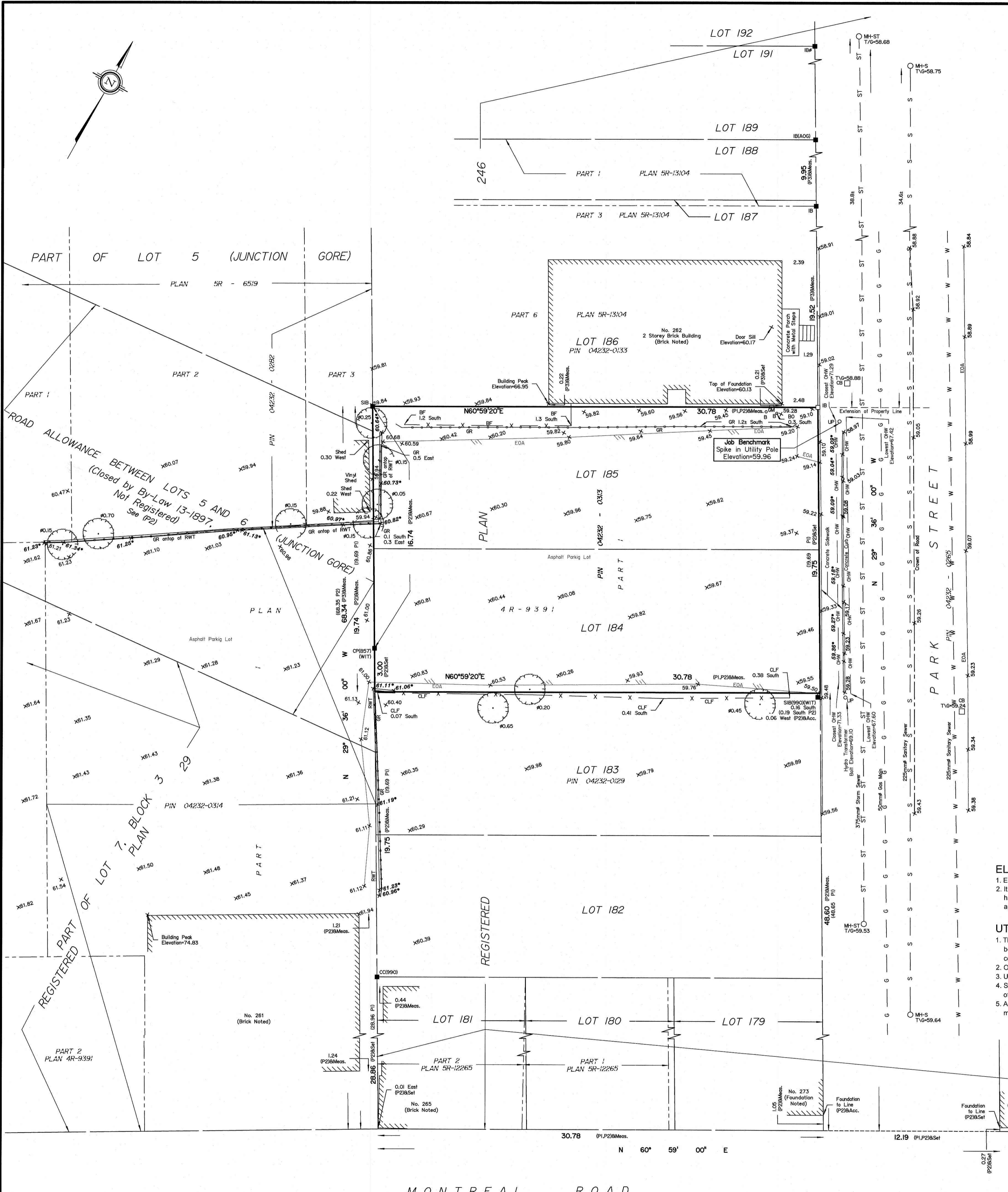
For bearing comparisons, a rotation of 0°54'45" counter-clockwise was applied to bearings on plan (P2) and a rotation of 1°6'00" counter-clockwise was applied to bearings on plan (P3)

ELEVATION NOTES

- Elevations shown are geodetic and are referred to the CGVD28 geodetic datum.
- It is the responsibility of the user of this information to verify that the job benchmark has not been altered or disturbed and that its relative elevation and description agrees with the information shown on this drawing.

UTILITY NOTES

- This drawing cannot be accepted as acknowledging all of the utilities and it will be the responsibility of the user to contact the respective utility authorities for confirmation.
- Only visible surface utilities were located.
- Underground utility data derived from City of Ottawa utility sheet reference D-17-05.
- Sanitary and storm sewer grades and inverts were not made available through City of Ottawa.
- A field location of underground plant by the pertinent utility authority is mandatory before any work involving breaking ground, probing, excavating etc.



MONTREAL ROAD

ASSOCIATION OF ONTARIO
LAND SURVEYORS
PLAN SUBMISSION FORM
V-40783

THIS PLAN IS NOT VALID UNLESS
IT IS AN EMBOSSED ORIGINAL
COPY ISSUED BY THE SURVEYOR
in accordance with
Regulation 1028, Section 29 (3).