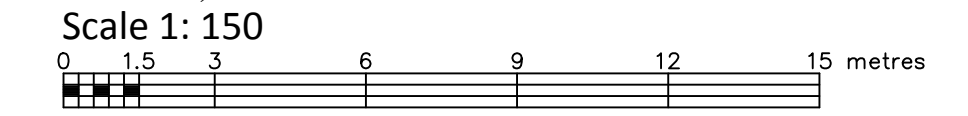


LOT 210 REGISTERED PLAN 14 LOTS 260 AND 261 AND PART OF LOT 259 REGISTERED PLAN 16 CITY OF OTTAWA FARLEY, SMITH & DENIS SURVEYING LTD. 2022 Scale 1: 150



Metric Note Distances on this plan are in metres and can be converted to feet by dividing by 0.3048.

Distance Note Distances shown on this plan are ground distances and can be converted to grid distances by multiplying by the combined scale factor of 0.99994.

Bearing Note Bearings and distances compiled from a plan by (1692) dated May 11, 2022 (File No. 132-22).

Elevation Notes 1. Elevations shown are geodetic and are referred to Geodetic Datum CGVD-1928 :1978. (Monument No. 1975-34238) 2. It is the responsibility of the user of this information to verify that the job benchmark has not been altered or disturbed and that its relative elevation and description agrees with the information shown on this drawing.

Utility Notes 1. This drawing cannot be accepted as acknowledging all of the utilities and it will be the responsibility of the user to contact the respective utility authorities for confirmation. 2. Only visible surface utilities were located. 3. Underground utility data derived from City of Ottawa utility sheet reference: E-10-21, E-10-25, 2621p&p1, 2621p&p2, 3067p&p2 & 3067p&p3. 4. Sanitary and storm sewer grades and inverts were derived from: Field measurement. 5. A field location of underground plant by the pertinent utility authority is mandatory before any work involving breaking ground, probing, excavating etc.

Note Updated topographic information along Rochester Street September 27, 2022.

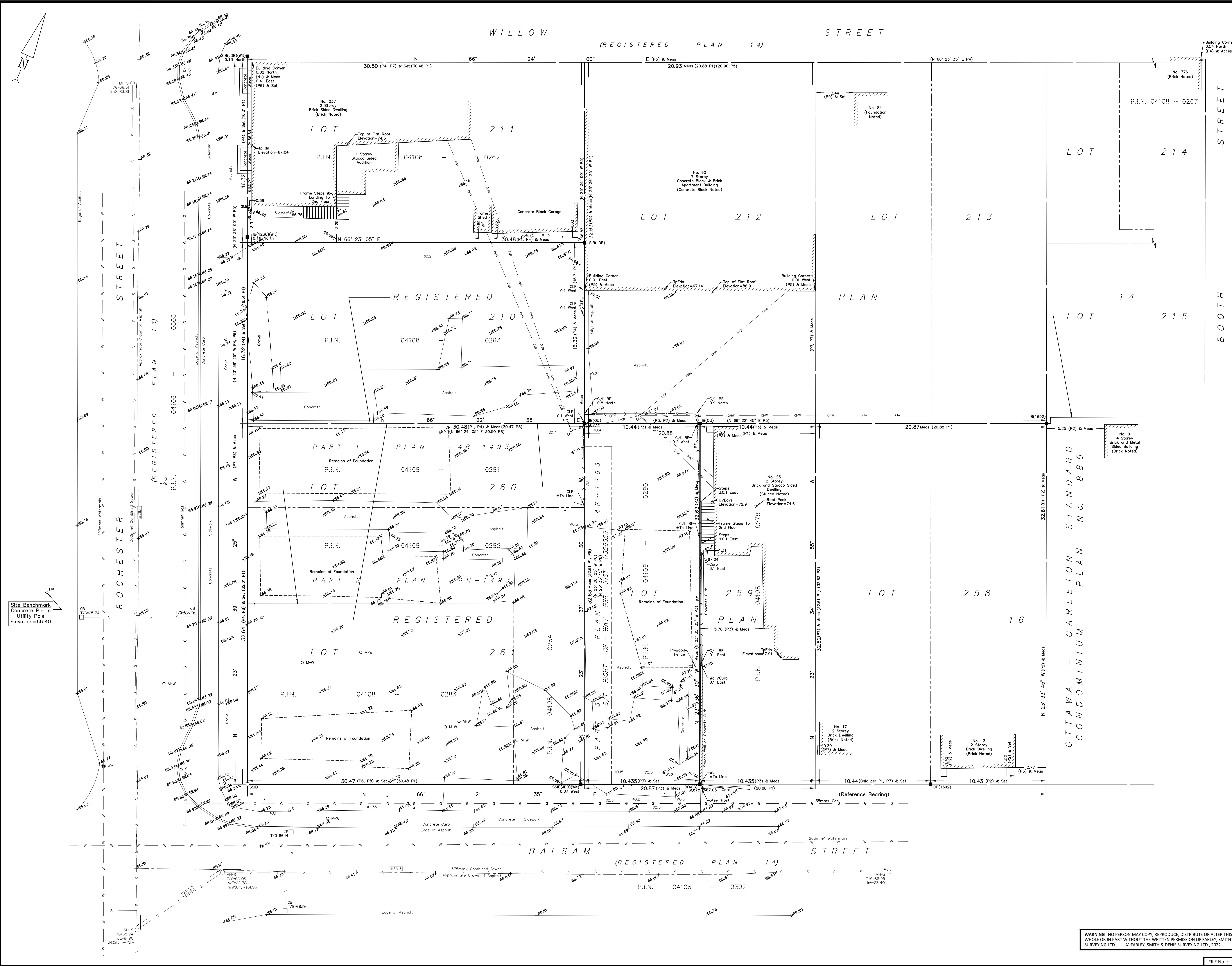
Notes & Legend table with symbols for Survey Monument Planted, Standard Iron Bar, etc., and a list of Denotes for various utility symbols.

Deciduous Tree - The symbol shown denotes location and trunk diameter only. Size of its' root system/overhead canopy may be smaller/larger than the symbol size depicted on this plan.

Site Area=1832.1 sq.m.

Caution 1. This is not a plan of survey and shall not be used except for the purpose indicated in the title block. 2. This sketch is protected by copyright.

Survey completion information: The survey was completed on the 22nd day of September, 2022. Date: February 6, 2023. Signature of Daniel Robinson, Ontario Land Surveyor. FARLEY, SMITH & DENIS SURVEYING LTD. ONTARIO LAND SURVEYORS CANADA LAND SURVEYORS. Unit 275, 30 COLONNADE ROAD, OTTAWA, ONTARIO K2E 7J6. TEL: (613) 727-8226 E-mail: fsdsurveys@belfnet.ca



WARNING NO PERSON MAY COPY, REPRODUCE, DISTRIBUTE OR ALTER THIS PLAN IN WHOLE OR IN PART WITHOUT THE WRITTEN PERMISSION OF FARLEY, SMITH & DENIS SURVEYING LTD. © FARLEY, SMITH & DENIS SURVEYING LTD., 2022.