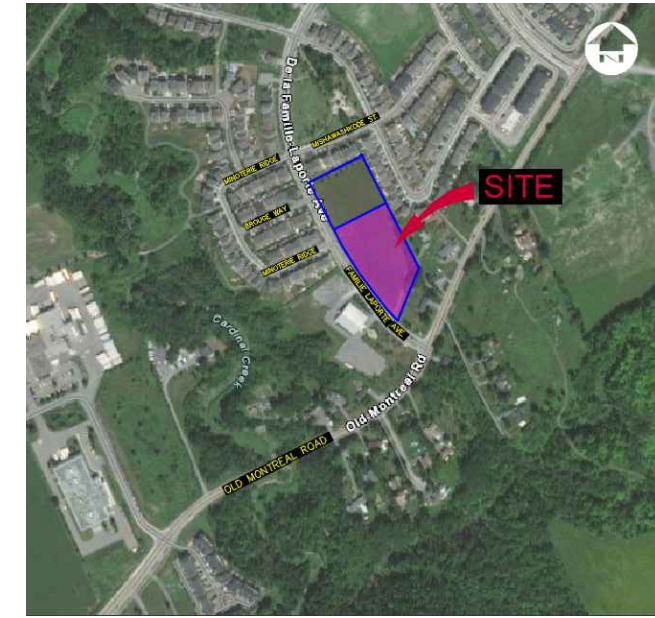


Conditions of Use

Verify elevations and/or dimensions on drawing prior to use. Report any discrepancies to Dillon Consulting Limited.
Do not scale dimensions from drawing.
Do not modify drawing, re-use it, or use it for purposes other than those intended at the time of its preparation without prior written permission from Dillon Consulting Limited.



NOTES:

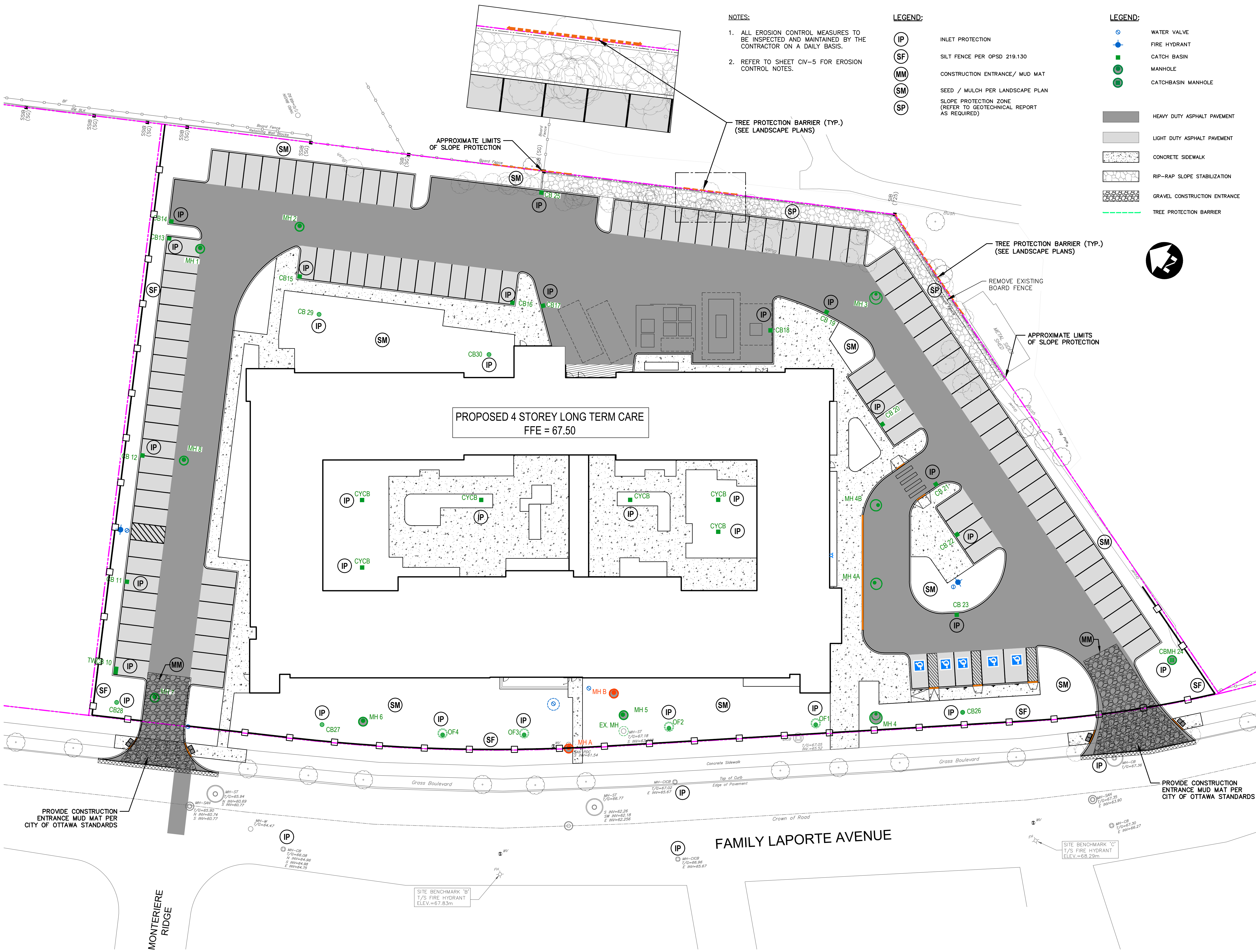
1. ALL EROSION CONTROL MEASURES TO BE INSPECTED AND MAINTAINED BY THE CONTRACTOR ON A DAILY BASIS.
2. REFER TO SHEET CIV-5 FOR EROSION CONTROL NOTES.

LEGEND:

- IP INLET PROTECTION
- SF SILT FENCE PER OPSD 219.130
- MM CONSTRUCTION ENTRANCE/ MUD MAT
- SM SEED / MULCH PER LANDSCAPE PLAN
- SP SLOPE PROTECTION ZONE (REFER TO GEOTECHNICAL REPORT AS REQUIRED)

LEGEND:

- Water Valve
- Fire Hydrant
- Catch Basin
- Manhole
- Catchbasin Manhole
- HEAVY DUTY ASPHALT PAVEMENT
- LIGHT DUTY ASPHALT PAVEMENT
- CONCRETE SIDEWALK
- RIP-RAP SLOPE STABILIZATION
- GRAVEL CONSTRUCTION ENTRANCE
- TREE PROTECTION BARRIER



5	24/03/2023	RE-ISSUED FOR SITE PLAN CONTROL APPLICATION AND ZONING BY-LAW AMENDMENT	CDP, DS
4	27/01/2023	RE-ISSUED FOR SITE PLAN CONTROL APPLICATION AND ZONING BY-LAW AMENDMENT	CDP, DS
3	27/01/2023	ISSUED FOR BUILDING PERMIT	CDP, DS
2	19/08/2022	RE-ISSUED FOR SITE PLAN CONTROL APPLICATION AND ZONING BY-LAW AMENDMENT	CDP, DS
1	12/02/2021	SPA / ZBA SUBMISSION	CDP

date: revision: by: revisions

All drawing and specifications are the property of the architect. The contractor shall verify all dimensions and information on site and report any discrepancy to architect before proceeding.

Arch Corp - Orleans

375 FAMILLE-LAPORTE AVENUE (formerly 1161 OLD MONTREAL RD.), ORLEANS ON, K4A 3N6

SOIL EROSION CONTROL PLAN

scale: 1:250
drawn by: DS
reviewed by: CDP
job number: 21-2647
plot date: March 24, 2023

CIV-3

FILENAME: C:\P\WORKING DIRECTORIES\PROJECTS\2021\2305\1066260\212647-03-CIV-COR.DWG PLOTTED BY: STOCKA, DORINA
 PLOT DATE: 2023-03-24 @ 12:16:13 PM PLOT SCALE: 1:250 STYLE: DILLON-STANDARD.CTB