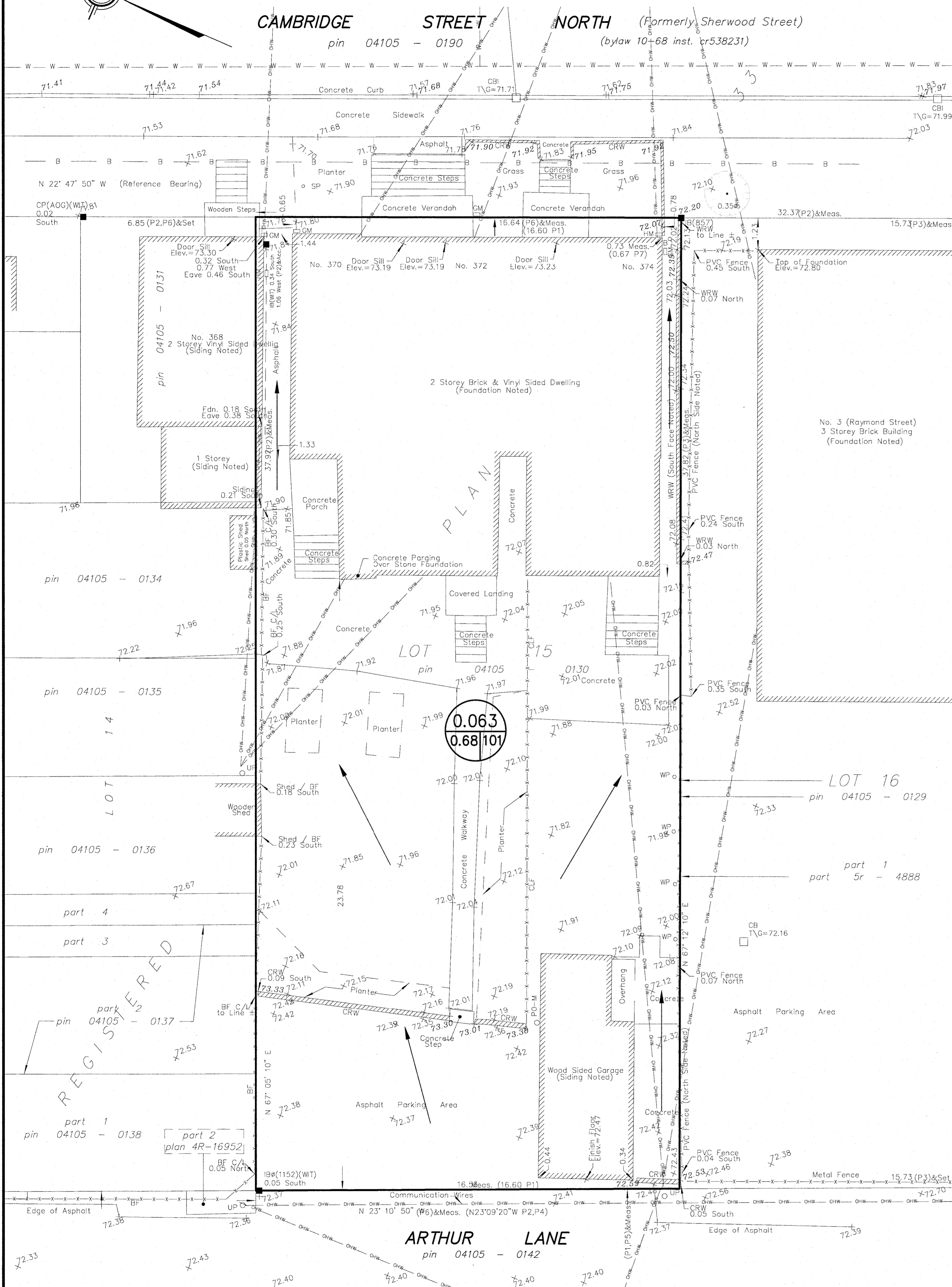
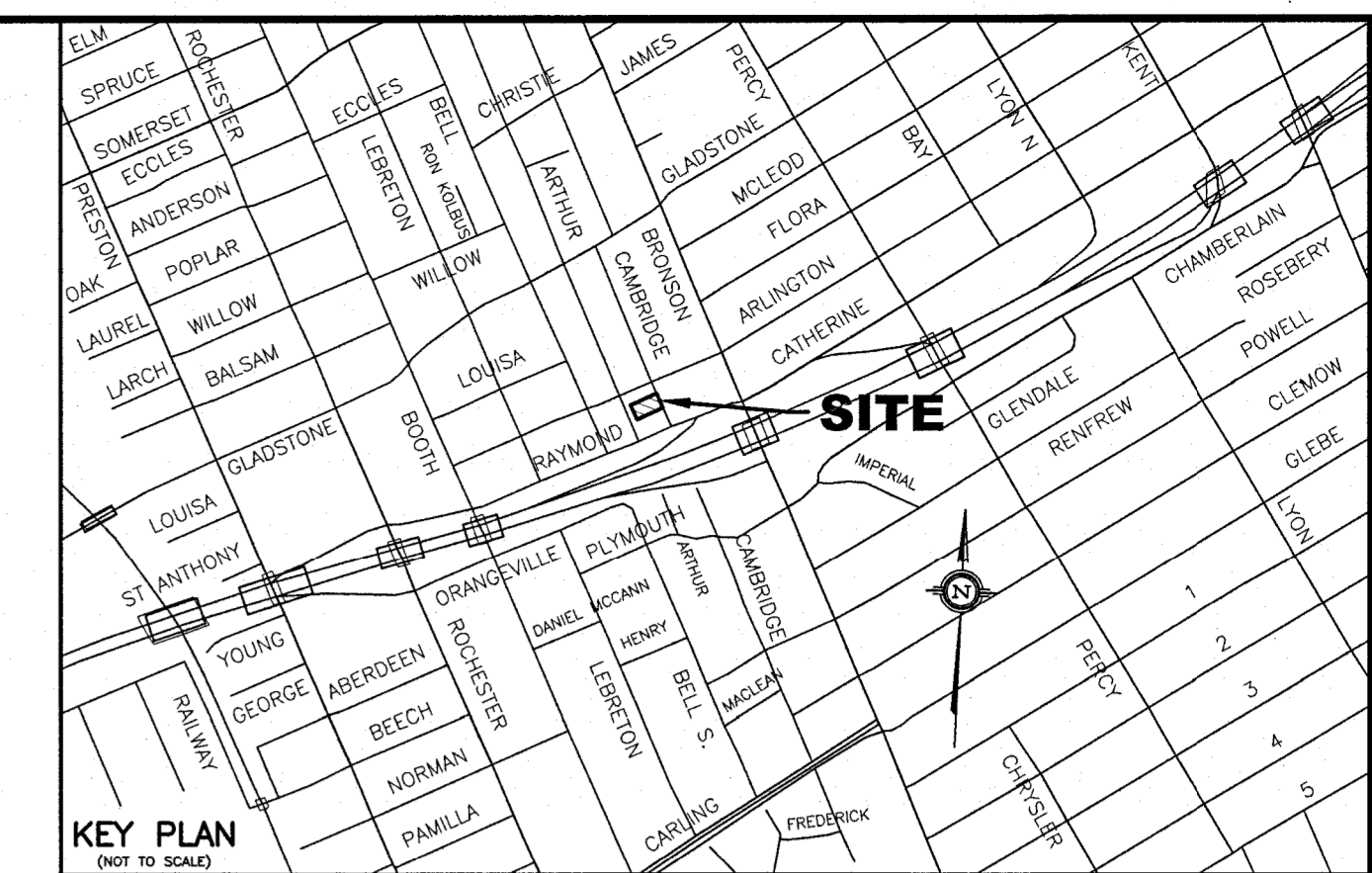
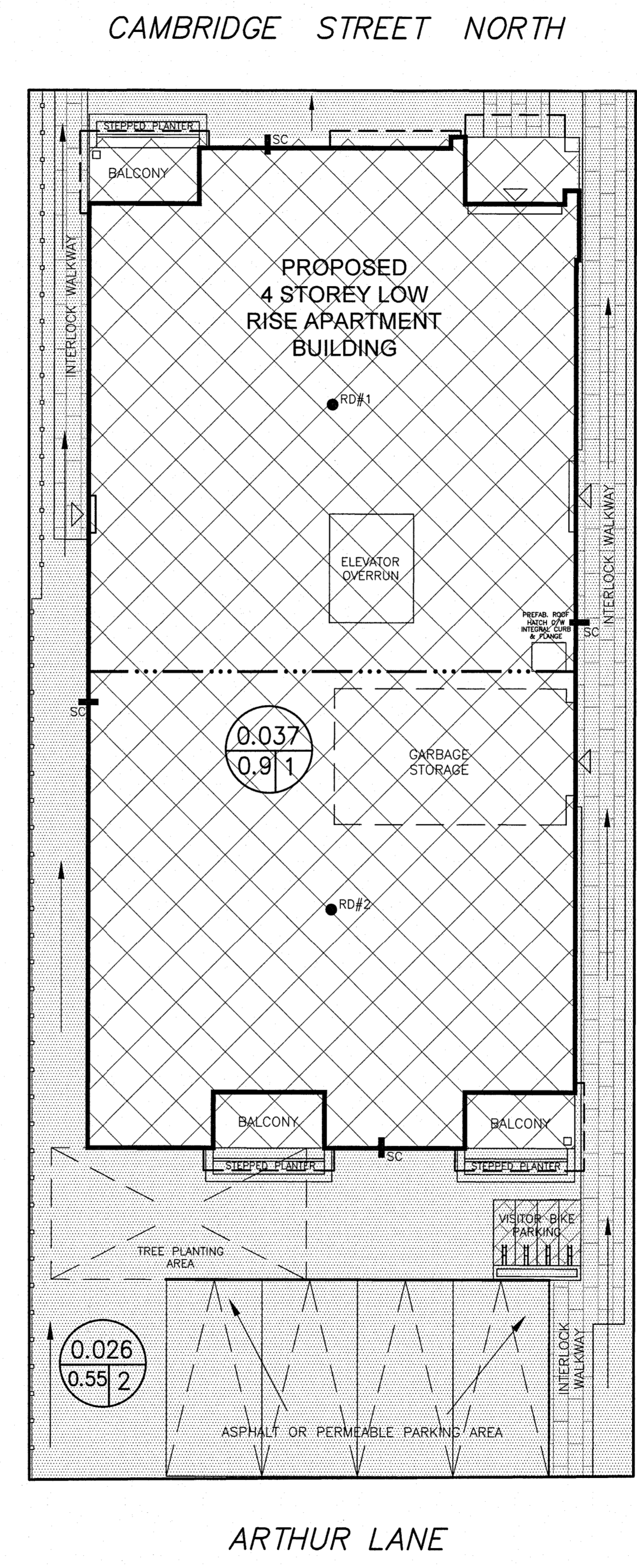


PRE - DEVELOPMENT STORM DRAINAGE AREA

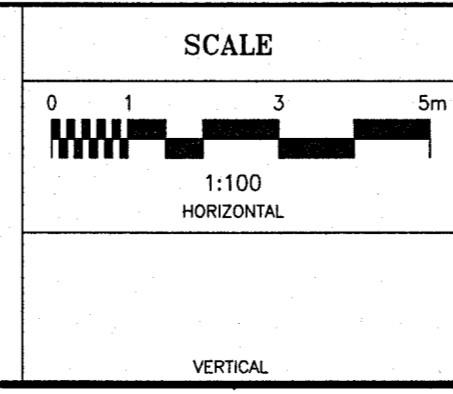
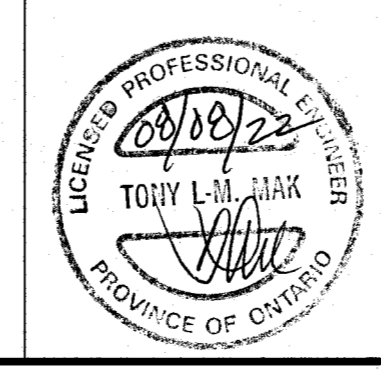


POST DEVELOPMENT STORM DRAINAGE AREA



- LEGEND**
- RD#1 PROPOSED ROOF DRAIN NUMBER AND LOCATION
 - SC PROPOSED ROOF SCUPPER LOCATION
 - — — PROPOSED HIGH RIDGE LINE
 - 0.002
0.9/2 DRAINAGE AREA IN HECTARES
DRAINAGE NODE NUMBER
 - COEFFICIENT OF RUNOFF
 - UN-CONTROLLED DRAINAGE AREA
 - CONTROLLED DRAINAGE AREA
- NOTES**
- NODE #1 REPRESENTS BUILDING ROOF AREA (SWM CONTROLLED AREA)
 - NODE #2 REPRESENTS UNCONTROLLED DRAINAGE AREA
 - NODE #101 REPRESENTS PRE-DEVELOPMENT DATA.

NO.	REVISION	DATE	BY
1	REVISIONS AS PER HOUSE DESIGNER'S LATEST REVISED SITE PLAN OF AUGUST 8, 2022	08/08/22	TLM



DESIGN	T.L.M.
CHECKED	T.L.M.
DRAWN BY	P.M.
CHECKED	T.L.M.
APPROVED	T.L.M.

PROJECT
370 CAMBRIDGE STREET NORTH
LOT 15
WEST CAMBRIDGE STREET NORTH
SOUTH OF STONE BOUNDARY
REGISTERED PLAN 33
CITY OF OTTAWA

DRAWING TITLE
STORM DRAINAGE AREA PLAN

<p>T.L. MAK ENGINEERING CONSULTANTS LTD. CONSULTING ENGINEERS</p>		
821-155	APRIL 2022	D-1