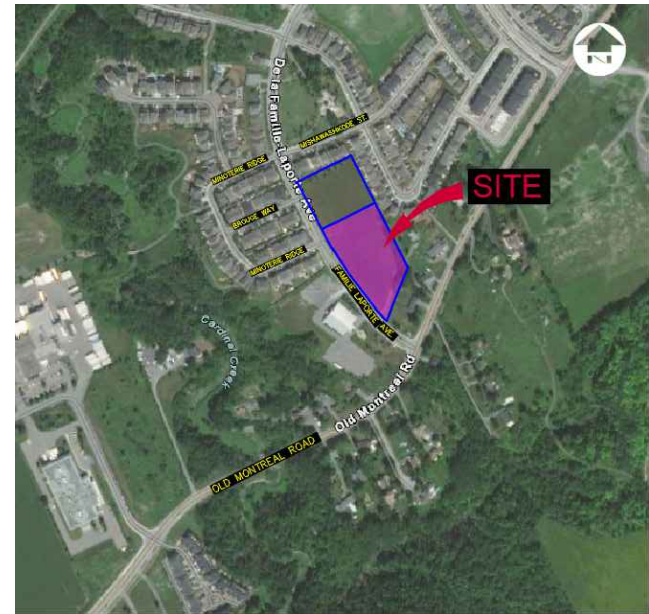


**Conditions of Use**

Verify elevations and/or dimensions on drawing prior to use. Report any discrepancies to Dillon Consulting Limited.  
Do not scale dimensions from drawing.  
Do not modify drawing, re-use it, or use it for purposes other than those intended at the time of its preparation without prior written permission from Dillon Consulting Limited.



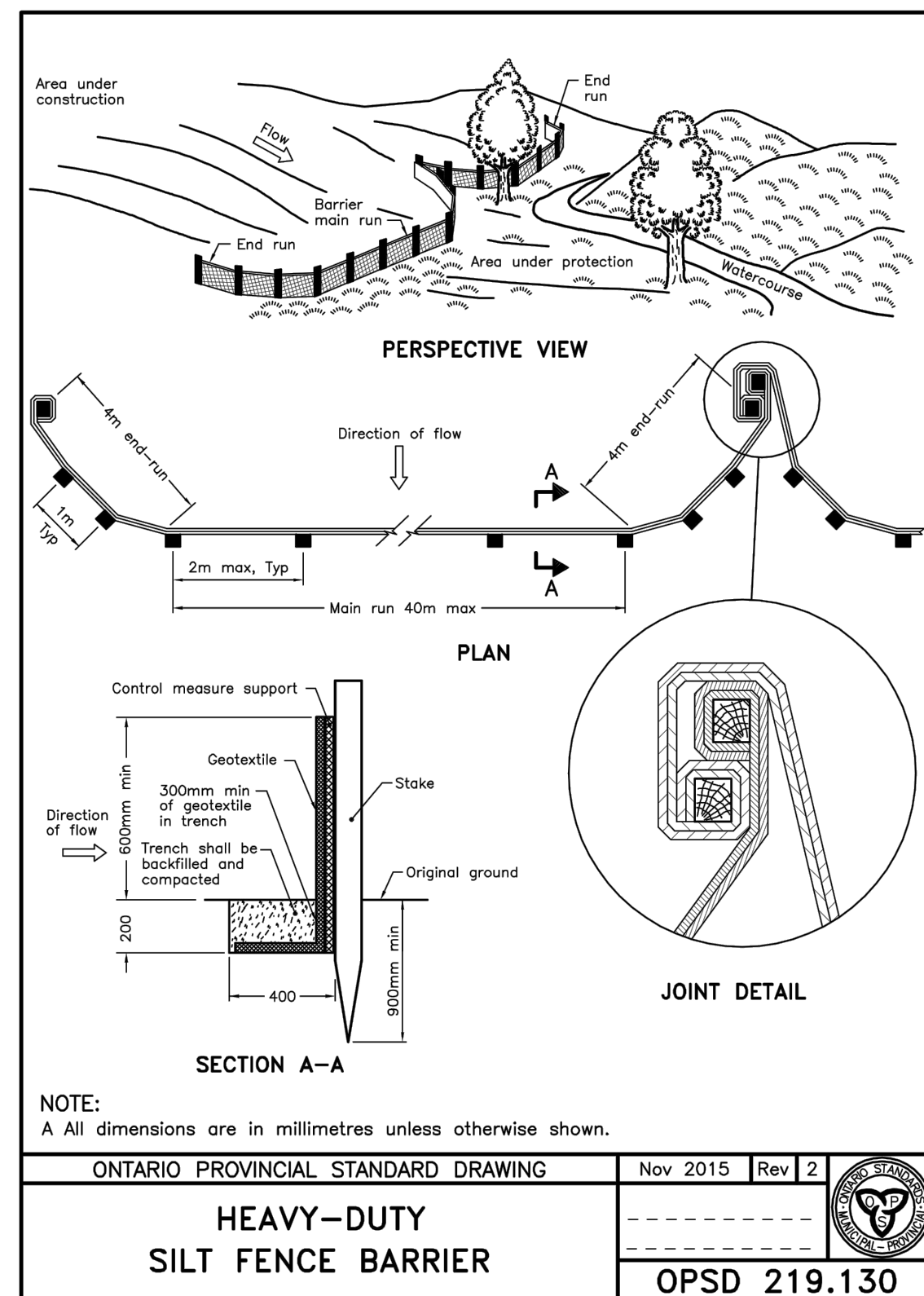
**EROSION AND SEDIMENT CONTROL**

**GENERAL NOTES:**

1. PROVIDE TEMPORARY DRAINAGE AND PUMPING AS NECESSARY TO KEEP EXCAVATIONS AND SITE FREE FROM WATER. TEMPORARY PUMPING TO BE COMPLETED IN ACCORDANCE WITH OPSS 518 "CONSTRUCTION SPECIFICATIONS FOR CONTROL OF WATER FROM DEWATERING OPERATIONS". DO NOT DISCHARGE WATER CONTAINING SUSPENDED MATERIALS INTO WATERCOURSES, SEWER OR DRAINAGE SYSTEMS. CONTROLLED DISPOSAL OR RUNOFF OF WATER CONTAINING SUSPENDED MATERIALS OR OTHER HARMFUL SUBSTANCES MUST BE COMPLETED IN ACCORDANCE WITH FEDERAL, PROVINCIAL AND MUNICIPAL REQUIREMENTS. SEE ALSO DEWATERING NOTES.
2. WORKS AROUND WATERCOURSES AND WETLANDS SHALL BE COMPLETED IN ACCORDANCE WITH THE MOST RECENT VERSION OF THE CONSERVATION AUTHORITY, MUNICIPAL, PROVINCIAL AND FEDERAL BEST MANAGEMENT PRACTICES. FUELING OPERATIONS SHALL NOT BE CONDUCTED AND FUELING TANK SHALL NOT BE LOCATED WITHIN 30.0m OF A ROADSIDE DITCH, MUNICIPAL DRAIN, NATURAL WATERCOURSE, WETLAND OR FIELD TILE.
3. INSTALLATION OF TEMPORARY EROSION AND SEDIMENT CONTROL MEASURES SHALL BE COMPLETED IN ACCORDANCE WITH THE CITY OF OTTAWA STANDARDS AND OPSS 577 "CONSTRUCTION SPECIFICATION FOR TEMPORARY EROSION AND SEDIMENT CONTROL MEASURES", EROSION AND SEDIMENT CONTROL GUIDELINES FOR URBAN CONSTRUCTION (DECEMBER 2006) AND THE CONTRACT DRAWINGS.
4. THE CONTRACTOR IS RESPONSIBLE FOR MAINTAINING TEMPORARY EROSION AND POLLUTION CONTROL FEATURES THROUGHOUT THE PROJECT. THE CONTRACTOR IS RESPONSIBLE FOR INSPECTING ALL TEMPORARY EROSION CONTROLS AFTER EACH RAINFALL AND AT LEAST DAILY DURING PROLONGED RAINFALL AND CLEARED OF ACCUMULATED SEDIMENT WHEN 50% OF CAPACITY IS REACHED. SILT FENCES ARE TO BE INSTALLED ALONG THE PROPERTY LINE. STRAW BALES SHALL BE INSTALLED IN ADDITION TO SILT FENCING WHEN FLOW IS CHANNLED IN A PARTICULAR DIRECTION TO THE RECEIVING COURSE OR WHERE WARRANTED. SILT FENCES SHALL NOT BE PERMITTED IN AREAS OF STANDING WATER. ONCE A VIGOROUS GROWTH IS ESTABLISHED IN THE RE-VEGETATED AREAS THE CONTROLS AND ACCUMULATED SEDIMENT SHALL BE REMOVED IN THEIR ENTIRETY WITHIN 30 DAYS OF DIRECTION FROM THE ENGINEER.
5. INLET CONTROL DEVICES TO BE INSTALLED ON ALL NEW SITE CATCH BASINS, AND ON ADJACENT ROADWAY CATCHBASINS THAT ARE SUBJECT TO SITE RUNOFF. INLET PROTECTION DEVICES (IP) TO BE CITY OF OTTAWA APPROVED INSERTS SUCH AS STORMSOK, SILTSAK, FLEXSTORM OR SENTINEL. FILTER BAGS ARE TO BE INSPECTED REGULARLY AND CLEANED AFTER EACH RAIN EVENT. INLET FILTERS TO REMAIN IN PLACE UNTIL FINAL RESTORATION HAS ESTABLISHED.
6. TEMPORARY CONSTRUCTION ENTRANCE TO FAMILLE-LAPORTE AVENUE. CONSTRUCTION ENTRANCE TO CONSIST OF A SOIL STABILIZATION GEOTEXTILE FABRIC COVERED WITH MINIMUM 300mm THICK STONE RIP-RAP MAT. RIP-RAP TO BE 100mm TO 200mm IN SIZE. IF THE CONSTRUCTION ENTRANCE DOES NOT SUFFICIENTLY PREVENT SEDIMENT FROM BEING TRACKED ONTO ADJACENT ROADWAYS, A WHEEL WASH MAY BE REQUIRED.

**SEQUENCING NOTES:**

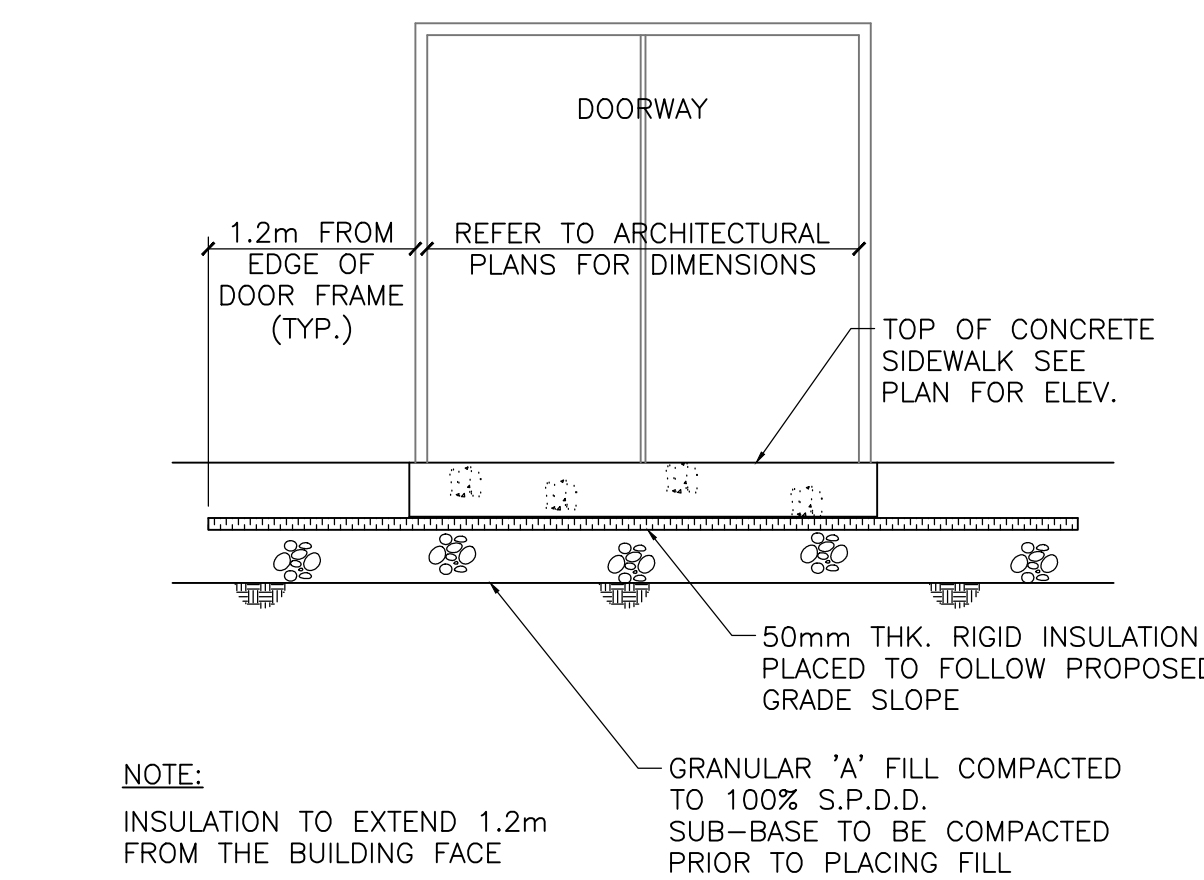
1. CONTRACTOR SHALL SUBMIT AN EROSION AND SEDIMENT CONTROL PLAN TO THE ENGINEER FOR APPROVAL.
2. INSTALL SILT CONTROL FENCING AROUND PERIMETER OF THE SITE AND CONSTRUCTION ENTRANCE.
3. STRIP TOPSOIL FROM WITHIN THE LIMITS OF GENERAL EARTHWORKS AND STORE TEMPORARILY WITHIN THE DESIGNATED AREAS AS DIRECTED BY THE OWNER.
4. REDISTRIBUTE TOPSOIL ON SITE AND RESTORE GRASSED AREAS AS PER CONTRACT SPECIFICATIONS.
5. ALL EROSION CONTROL MEASURES TO BE MONITORED AS A MINIMUM ON A WEEKLY BASIS AND KEPT IN A FUNCTIONAL STATE.
6. ONCE A VIGOROUS GROWTH IS ESTABLISHED IN THE REVEGETATED AREAS, THE CONTROLS AND ACCUMULATED SEDIMENT SHALL BE REMOVED IN THEIR ENTIRETY WITHIN 30 DAYS OF DIRECTION FROM THE ENGINEER.



**GENERAL NOTES:**

1. THE OWNER AND DILLON CONSULTING LIMITED DO NOT GUARANTEE THE ACCURACY OF THE UTILITIES SHOWN ON THE DRAWINGS. OTHER UTILITIES MAY BE PRESENT OR THE UTILITIES SHOWN MAY DIFFER IN SIZE OR LOCATION FROM THOSE SHOWN. THE CONTRACTOR SHALL NOTE THAT SERVICES FROM THE MAIN LINES ARE NOT SHOWN. THE CONTRACTOR ASSUMES FULL RESPONSIBILITY TO CONTACT THE VARIOUS UTILITY COMPANIES AND TO REPAIR ANY DAMAGE IT MAY CAUSE TO THESE UTILITIES OR TO OTHER THIRD PARTIES. THE CONTRACTOR AGREES TO INDEMNIFY THE OWNER AND DILLON CONSULTING LIMITED AGAINST ANY CLAIMS WHICH MAY ARISE FROM THE CONTRACTOR'S ACTIONS.
2. ALL WORKS SHALL COMPLY WITH THE CITY OF OTTAWA OR OPS STANDARDS.

ALL EXISTING INVERTS TO BE FIELD CHECKED PRIOR TO CONSTRUCTION



**SIDEWALK AT DOORWAY DETAIL**  
NOT TO SCALE

THE FOLLOWING CITY OF OTTAWA STANDARD DETAILS SHALL APPLY TO THIS CONTRACT	
SC1.1	CONCRETE BARRIER CURB FOR GRANULAR BASE PAVEMENT (MODIFIED OPSS-600.110)
SC1.4	CONCRETE BARRIER CURB WITH SIDEWALK
SC5	SIDEWALK CONSTRUCTION JOINTS
SC7.3	TWSI (TACTILE WALKING SURFACE INDICATOR) DETAIL
SC7.4	CURB RETURN ENTRANCES
S5	STANDARD TRENCH TERMINOLOGY
S6	SINGLE TRENCH (SEWER AND SEWER SERVICES)
S10	SUPPORT DETAIL FOR EXISTING UTILITY CROSSING OR WATERMAIN TRENCH
S19	HEAVY DUTY "FISH" TYPE SQUARE CATCH BASIN COVER (MODIFIED OPSS-400.07)
S19.1	HEAVY DUTY "FISH" TYPE SQUARE CATCH BASIN COVER
S24.1	STANDARD CIRCULAR STORM MAINTENANCE HOLE COVER
S25	STANDARD CIRCULAR FRAME FOR MAINTENANCE HOLES
S31	CATCH BASIN - ELBOW FOR REAR YARD DITCHED PIPE AND LANDSCAPING APPLICATIONS
R1	SUBDRAIN INSTALLATION DETAIL
R10	STANDARD TRENCH REINSTATEMENT IN PAVED SURFACE
W22	THERMAL INSULATION FOR WATERMAINS IN SHALLOW TRENCHES
W25.2	WATERMAIN CROSSING OVER SEWER
W25.4	THRUST BLOCK DIMENSION TABLES FOR PVC AND DI PIPE 400mm AND UNDER
W25.6	TABLES OF RESTRAINED LENGTHS FOR PVC AND DI PIPE 400mm AND UNDER
W3	CIRCULAR CHAMBER GATE VALVES
W40	PROTECTION FOR PVC WATERMAIN SYSTEM
W55	CONNECTION BETWEEN TRACER WIRE AND FITTING BOLT

THE FOLLOWING ONTARIO PROVINCIAL STANDARD DETAILS SHALL APPLY TO THIS CONTRACT	
701.010	PRECAST CONCRETE MAINTENANCE HOLE - 1200mm DIAMETER
705.010	PRECAST CONCRETE CATCH BASIN - 600x600mm
708.020	SUPPORT FOR PIPE AT CATCH BASIN OR MAINTENANCE HOLE
708.030	CATCH BASIN CONNECTION FOR FLEXIBLE MAIN PIPE SEWER
802.010	FLEXIBLE PIPE EMBEDMENT AND BACKFILL EARTH EXCAVATION
802.030	RIGID PIPE BEDDING, COVER, AND BACKFILL TYPE 1 OR 2 - EARTH EXCAVATION

#	date:	revision:	by:
5	24/03/2023	RE-ISSUED FOR SITE PLAN CONTROL APPLICATION AND ZONING BY-LAW AMENDMENT	CDP_DS
4	27/01/2023	RE-ISSUED FOR SITE PLAN CONTROL APPLICATION AND ZONING BY-LAW AMENDMENT	CDP_DS
3	27/01/2023	ISSUED FOR BUILDING PERMIT	CDP_DS
2	19/08/2022	RE-ISSUED FOR SITE PLAN CONTROL APPLICATION AND ZONING BY-LAW AMENDMENT	CDP_DS
1	12/02/2021	SPA / ZBA SUBMISSION	CDP



All drawing and specifications are the property of the architect. The contractor shall verify all dimensions and information on site and report any discrepancy to architect before proceeding.

Arch Corp - Orleans

375 FAMILLE-LAPORTE AVENUE (formerly 1161 OLD MONTREAL RD.), ORLEANS ON, K4A 3N6

**NOTES AND MISCELLANEOUS DETAILS**

scale: N.T.S.  
drawn by: DS  
reviewed by: CDP  
job number: 21-2647  
plot date: March 24, 2023  
drawing number:

**CIV-5**