

# 200/201 FRIEL STREET



LASHLEY + ASSOCIATES  
LANDSCAPE ARCHITECTURE  
& SITE ENGINEERING  
202-950 GLANSTONE AVENUE  
OTTAWA, ON K1Y 3E6  
T 613 233 8579  
F 613 233 4851  
W LashleyLA.com

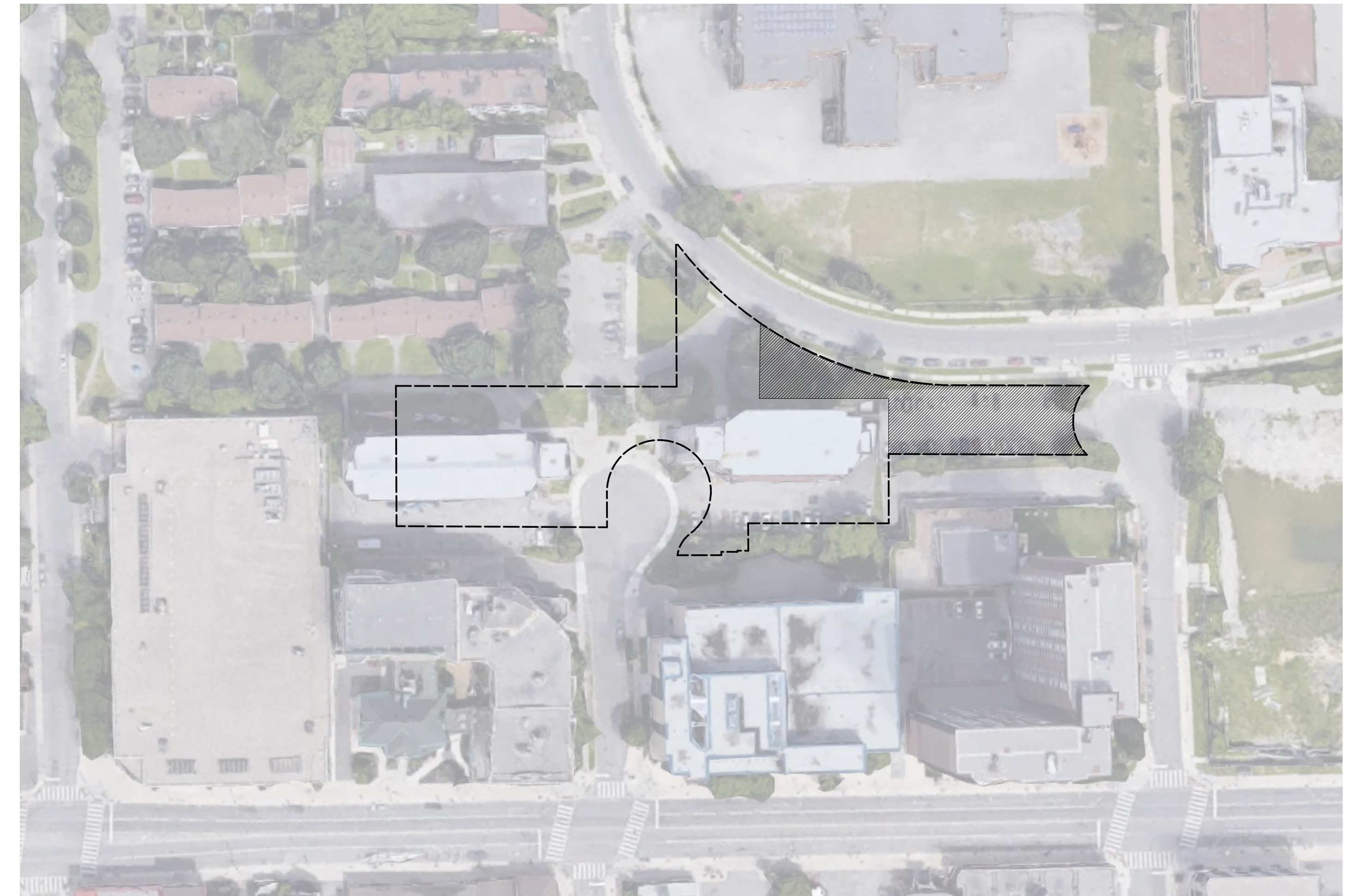
**diamond  
schmitt**

200/201, FRIEL STREET  
OTTAWA, ONTARIO  
ISSUED FOR  
REZONING AND SITE PLAN CONTROL

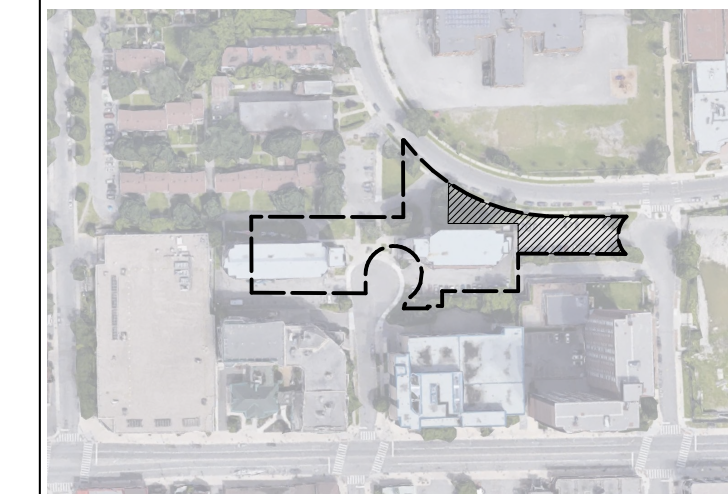
22 MARCH 2023

## DRAWING INDEX

- TREE PROTECTION PLAN TP -1
- DEMOLITION PLAN D1-1
- LANDSCAPE PLAN L1-1
- LANDSCAPE PLAN POPS AREA L1-2
- PLANTING PLAN L1-3
- DETAILS L2-1
- DETAILS L2-2



KEY PLAN 



KEY PLAN, NTS

**LANDSCAPE NOTES**

- All general site information and conditions compiled from architect's and engineer's plans and surveys.
- Do not scale this drawing.
- Report any discrepancies prior to commencing work. No responsibility is born by the Landscape Architect for unknown subsurface conditions.
- Reinstale all areas and items damaged as a result of construction activities to the satisfaction of the Landscape Architect.
- Drawing may not be used for construction until signed by Landscape Architect as issued for construction.
- The accuracy of the position of utilities is not guaranteed.
- Individual utility co. must be contacted for confirmation of utility existence and location prior to digging.
- This drawing is an instrument of service and requires the permission of the Landscape Architect for use. Copyright is reserved by the Landscape Architect, David M. Lashley.
- Plant material shall be No. 1 Grade and shall comply with the Metric Guide Specifications for Nursery stock (latest edition), published by Canadian Nursery Trades Association.
- Plant substitutions shall not be permitted unless approved by the Landscape Architect.
- Obtain approval of planting prior to digging.
- Topsoil shall be garden sirl mixture sandy loam with min. 5% organic matter and peat moss added at ratio of 1:10, topsoil to be approved by Landscape Architect.

**1 TREE PROTECTION PLAN**  
TP-01 Scale: 1:150

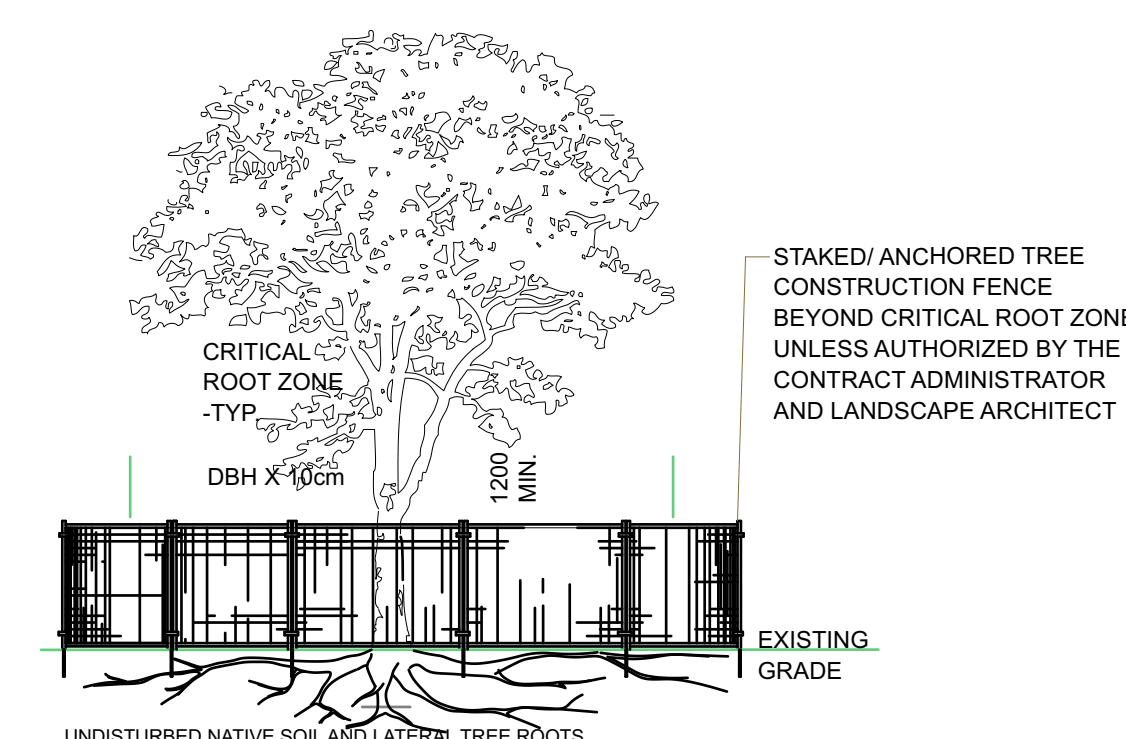
**LEGEND**

- Property Line
- Building Line
- Fence Line
- Tree Protection Line

- ID: Multiple values
- Action: Remove
- ID: Multiple values
- Action: Retain

**Existing Tree Report**

ID	Botanical Name	Common Name	DBH	Condition	Action	Notes
E01	Ulmus pumila	Siberian Elm	0.424	Average	Remove	
E02	Ulmus pumila	Siberian Elm	0.418	Poor	Remove	
E03	Ulmus pumila	Siberian Elm	0.205	Poor	Remove	Entwined in fence
E04	Acer nequundo	Manitoba Maple	0.3	Poor	Remove	Entwined in fence
E05	Acer nequundo	Manitoba Maple	0.22	Poor	Remove	Entwined in fence
E06	Acer nequundo	Manitoba Maple	0.17	Good	Remove	
E07	Celtis occidentalis	Hackberry	0.11	Good	Remove	
E08	Celtis occidentalis	Hackberry	0.19	Good	Remove	
E09	Pinus nigra	Austrian Pine	0.46	Good	Remove	
E10	Pinus nigra	Austrian Pine	0.43	Good	Remove	
E11	Tilia cordata	Little Leaf Linden	0.33	Good	Retain	
E12	Ulmus americana	American Elm	0.45	Good	Retain	
E13	Celtis occidentalis	Hackberry	0.14	Poor	Remove	
E14	Pinus nigra	Austrian Pine	0.34	Good	Retain	
E15	Pinus nigra	Austrian Pine	0.42	Average	Retain	
E16	Pinus nigra	Austrian Pine	0.26	Good	Retain	
E17	Pinus nigra	Austrian Pine	0.379	Average	Retain	
E18	Acer nequundo	Manitoba Maple	0.286	Average	Remove	
E19	Tilia cordata	Little Leaf Linden	0.32	Good	Retain	



- NOTES:**  
THE FOLLOWING PROTECTION MEASURES MUST BE IMPLEMENTED FOR RETAINED TREES, BOTH WITHIN THE WORK AREA AND ON ADJACENT PARCELS.
- UNDER THE GUIDANCE OF AN ARBORIST, ERECT A MODULAR FENCE AT THE CRITICAL ROOT ZONE (CRZ) OF TREES WHERE THE CRZ IS ESTABLISHED AS BEING 10 CENTIMETERS FROM THE TRUNK FOR EVERY CENTIMETER OF TRUNK DIAMETER AT BREAST HEIGHT.
  - TREE PROTECTION SHALL BE ERECTED TO PROVIDE A CONTINUOUS BARRICADE BETWEEN DESIGNATED TREES AND THE WORK AREA PRIOR TO CONSTRUCTION.
  - TUNNEL OR BORE WHEN DIGGING WITHIN THE CRZ OF A TREE.
  - ENSURE ALL EQUIPMENT AND CONSTRUCTION RELATED MATERIAL ARE NOT PLACED OR TEMPORARILY STORED WITHIN THE CRZ.
  - ENSURE EXHAUST FUMES FROM ALL EQUIPMENT ARE NOT DIRECTED TOWARDS ANY TREE'S CANOPY.
  - FLOODING OR DEPOSITION OF SEDIMENT SHALL BE PREVENTED WHERE TREES ARE LOCATED.
  - ALL DISTURBED ROOT SYSTEMS SHALL BE EXPOSED AND BACKFILLED IN ONE CONTINUOUS OPERATION TO MINIMIZE DESICCATION.
  - EXPOSED ROOTS SHALL BE KEPT CONTINUOUSLY MOIST DURING EXCAVATION.
  - REMOVE BROKEN AND DAMAGED ROOTS WITH SHARP PRUNING SHEARS.
  - THE TREE PROTECTION MODULAR FENCE IS TEMPORARY, SHALL BE MAINTAINED AT ALL TIMES DURING CONSTRUCTION OPERATIONS, AND SHALL BE REMOVED UPON COMPLETION OF WORK WHEN AGREED TO BY THE CONTRACT ADMINISTRATOR AND LANDSCAPE ARCHITECT.

A 2023-03-22 ISSUED FOR REZONING AND SITE PLAN CONTROL

NO.	DATE	DESCRIPTION

SEAL:

NORTH:

CONSULTANT: **diamond schmitt**

PROJECT: **OCH 200/201 FREIL STREET**  
200/201 FREIL STREET, OTTAWA, ONTARIO

DRAWING TITLE: **TREE PROTECTION PLAN**

DATE: 2023-03-14 DRAWING NO.: **TP-01**  
SCALE: AS NOTED  
DRAWN BY:  
LA PROJECT NO.: 22844-1



**1 DEMOLITION PLAN**  
D1-1 Scale: 1:150

**LEGEND**

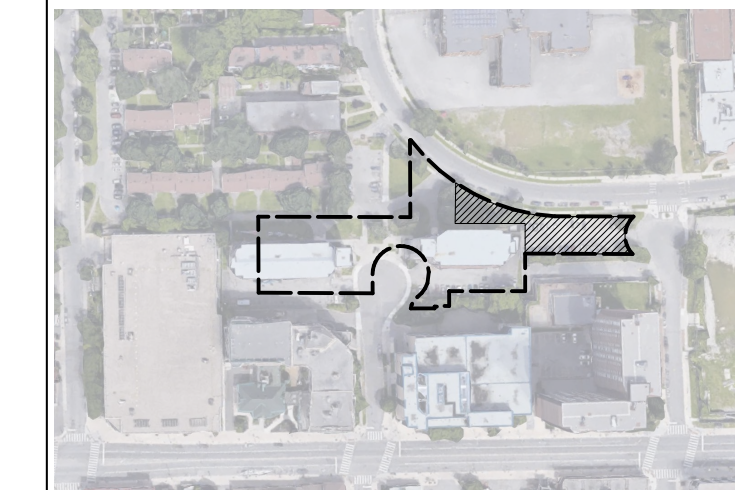
— Property Line

— Building Line

—X— Fence Line

○ ID: Multiple values  
Action: Remove

⊙ ID: Multiple values  
Action: Retain



KEY PLAN, NTS

**LANDSCAPE NOTES**

- All general site information and conditions compiled from architect's and engineer's plans and surveys.
- Do not scale this drawing.
- Report any discrepancies prior to commencing work. No responsibility is born by the Landscape Architect for unknown subsurface conditions.
- Reinstate all areas and items damaged as a result of construction activities to the satisfaction of the Landscape Architect.
- Drawing may not be used for construction until signed by Landscape Architect as issued for construction.
- The accuracy of the position of utilities is not guaranteed.
- Individual utility co. must be contacted for confirmation of utility existence and location prior to digging.
- This drawing is an instrument of service and requires the permission of the Landscape Architect for use. Copyright is reserved by the Landscape Architect, David M. Lashley.
- Plant material shall be No. 1 Grade and shall comply with the Metric Guide Specifications for Nursery stock (latest edition), published by Canadian Nursery Trades Association.
- Plant substitutions shall not be permitted unless approved by the Landscape Architect.
- Obtain approval of planting prior to digging.
- Topsail shall be garden silt mixture sandy loam with min. 5% organic matter and peat moss added at ratio of 1:10, topsail to be approved by Landscape Architect.

NO.	DATE	DESCRIPTION
A	2023-03-22	ISSUED FOR REZONING AND SITE PLAN CONTROL

	<p>NORTH:</p>
--	---------------



**CONSULTANT:**  
**diamond schmitt**

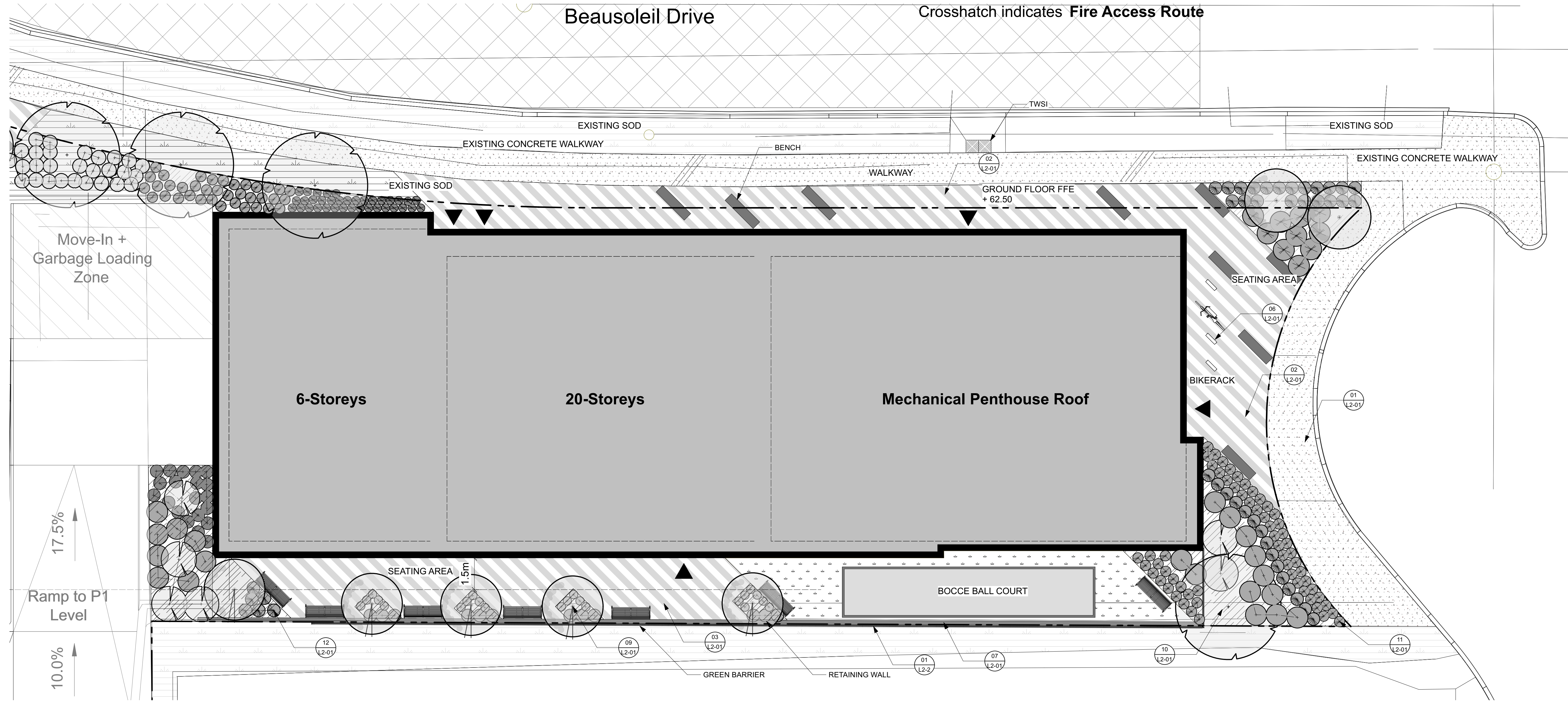
**PROJECT:**  
**OCH 200/201 FREIL STREET**  
200/201 FREIL STREET, OTTAWA, ONTARIO

**DRAWING TITLE:**  
**DEMOLITION PLAN**

<b>DATE:</b>	2023-03-14	<b>DRAWING NO.:</b>	<b>D1-1</b>
<b>SCALE:</b>	AS NOTED		
<b>DRAWN BY:</b>	MH		
<b>LA PROJECT NO.:</b>	22844-1		

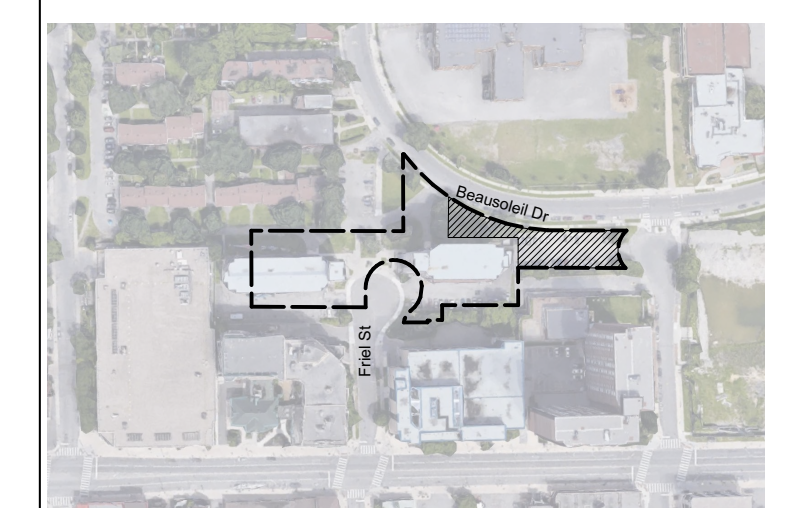
Beausoleil Drive

Crosshatch indicates Fire Access Route



1 LANDSCAPE PLAN  
L1-01 Scale: 1:100

- LEGEND**
- Property Line
  - Screen Willow Fence
  - Ornamental Steel Fence
  - Mulch
  - Existing green area
  - Artificial Turf
  - Unit Pavers
  - Light Duty Concrete Walkway
  - Site Furniture
  - Bike Rack



KEY PLAN, NTS

**LANDSCAPE NOTES**

1. All general site information and conditions compiled from architect's and engineer's plans and surveys.
2. Do not scale this drawing.
3. Report any discrepancies prior to commencing work. No responsibility is born by the Landscape Architect for unknown subsurface conditions.
4. Reinstlate all areas and items damaged as a result of construction activities to the satisfaction of the Landscape Architect.
5. Drawing may not be used for construction until signed by Landscape Architect as issued for construction.
6. The accuracy of the position of utilities is not guaranteed.
7. Individual utility co. must be contacted for confirmation of utility existence and location prior to digging.
8. This drawing is an instrument of service and requires the permission of the Landscape Architect for use. Copyright is reserved by the Landscape Architect, David M. Lashley.
9. Plant material shall be No. 1 Grade and shall comply with the Metric Guide Specifications for Nursery stock (latest edition), published by Canadian Nursery Trades Association.
10. Plant substitutions shall not be permitted unless approved by the Landscape Architect.
11. Obtain approval of planting prior to digging.
12. Topsoil shall be garden siri mixture sandy loam with min. 5% organic matter and peat moss added at ratio of 1:10, topsoil to be approved by Landscape Architect.

NO.	DATE	DESCRIPTION
A	2023-03-22	ISSUED FOR REZONING AND SITE PLAN CONTROL

SEAL:

NORTH:



CONSULTANT:  
**diamond schmitt**

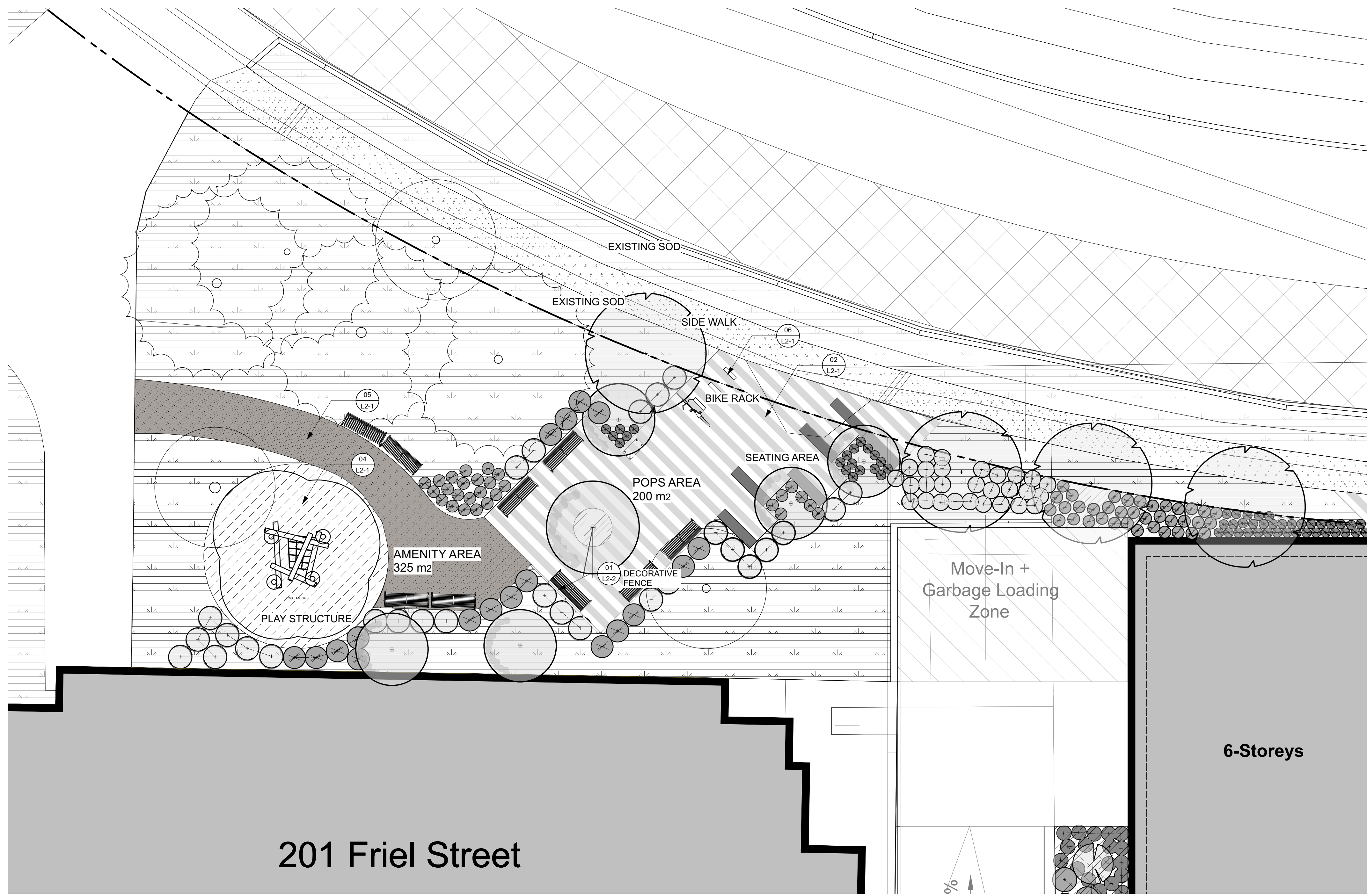
PROJECT:  
**OCH 200/201 FREIL STREET**  
200/201 FREIL STREET, OTTAWA,  
ONTARIO

DRAWING TITLE:  
**LANDSCAPE PLAN**

DATE:	2023-03-14	DRAWING NO.:	
SCALE:	AS NOTED		
DRAWN BY:	MH		
LA PROJECT NO.:	22844-1		

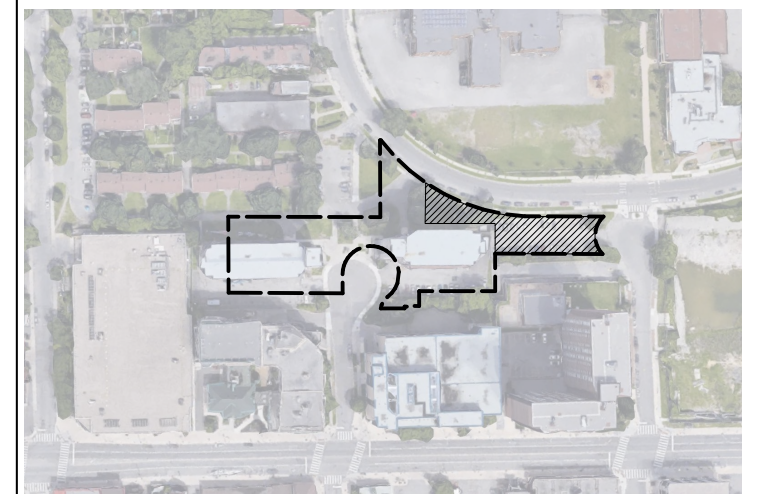
**L1-01**

L1-01



**LEGEND**

- Property Line
- Screen Willow Fence
- Ornamental Steel Fence
- Mulch
- Existing Green Area
- Engineered Wood Fiber
- Light Duty Asphalt
- Unit Pavers
- Light Duty Concrete Walkway
- Site Furniture
- Bike Rack



KEY PLAN, NTS

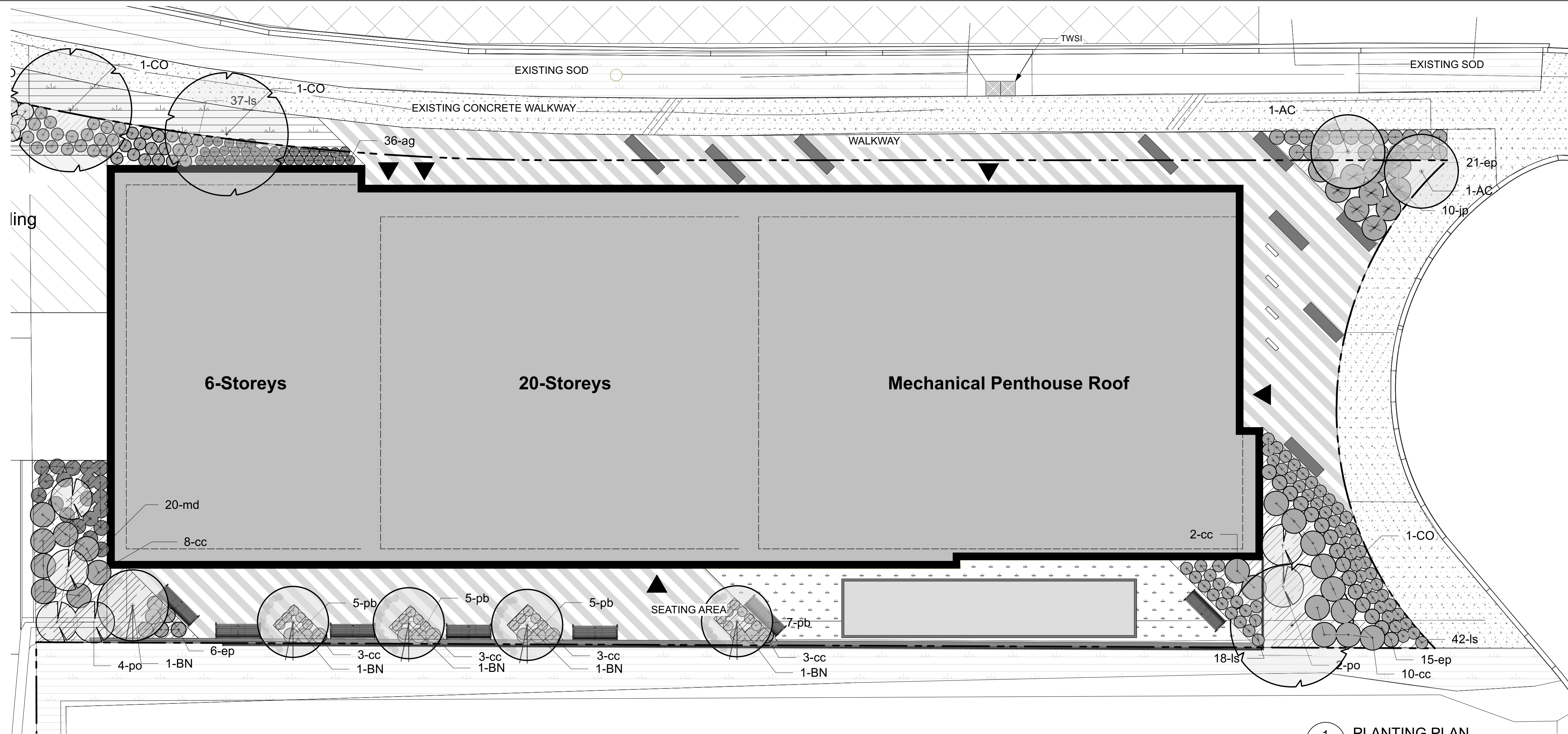
**LANDSCAPE NOTES**

1. All general site information and conditions compiled from architect's and engineer's plans and surveys.
2. Do not scale this drawing.
3. Report any discrepancies prior to commencing work. No responsibility is born by the Landscape Architect for unknown subsurface conditions.
4. Reinstale all areas and items damaged as a result of construction activities to the satisfaction of the Landscape Architect.
5. Drawing may not be used for construction until signed by Landscape Architect as issued for construction.
6. The accuracy of the position of utilities is not guaranteed.
7. Individual utility co. must be contacted for confirmation of utility existence and location prior to digging.
8. This drawing is an instrument of service and requires the permission of the Landscape Architect for use. Copyright is reserved by the Landscape Architect, David M. Lashley.
9. Plant material shall be No. 1 Grade and shall comply with the Metric Guide Specifications for Nursery stock (latest edition), published by Canadian Nursery Trades Association.
10. Plant substitutions shall not be permitted unless approved by the Landscape Architect.
11. Obtain approval of planting prior to digging.
12. Topsoil shall be garden silt mixture sandy loam with min. 5% organic matter and peat moss added at ratio of 1:10, topsoil to be approved by Landscape Architect.

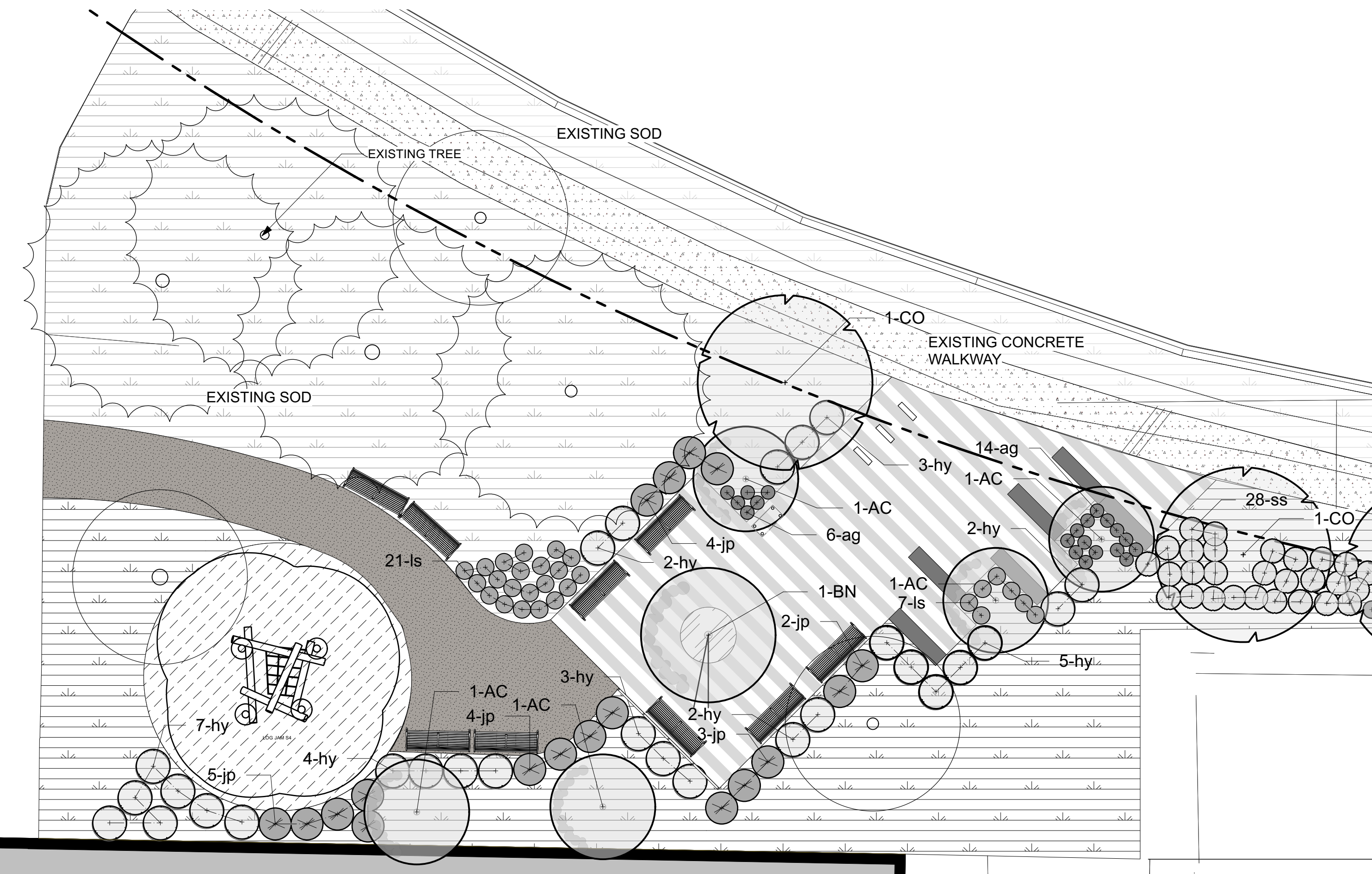
1 LANDSCAPE PLAN-POPS  
L1-02 Scale: 1:100

2023-03-22		ISSUED FOR REZONING AND SITE PLAN CONTROL	
DATE	DESCRIPTION		
	NORTH:		
<b>CONSULTANT:</b>			
<b>diamond schmitt</b>			
<b>PROJECT:</b>			
<b>OCH 200/201 FREIL STREET</b>			
200/201 FREIL STREET, OTTAWA, ONTARIO			
<b>DRAWING TITLE:</b>			
<b>LANDSCAPE PLAN-POPS</b>			
<b>DATE:</b>	2023-03-14	<b>DRAWING NO.:</b>	
<b>SCALE:</b>	AS NOTED	<b>L1-02</b>	
<b>DRAWN BY:</b>	MH		
<b>LA PROJECT NO.:</b>	22844-1		

- LEGEND**
- Property Line
  - Screen Willow Fence
  - Ornamental Steel Fence
  - Mulch
  - Existing Green Area
  - Engineered Wood Fiber
  - Light Duty Asphalt
  - Unit Pavers
  - Light Duty Concrete Walkway
  - Site Furniture
  - Bike Rack



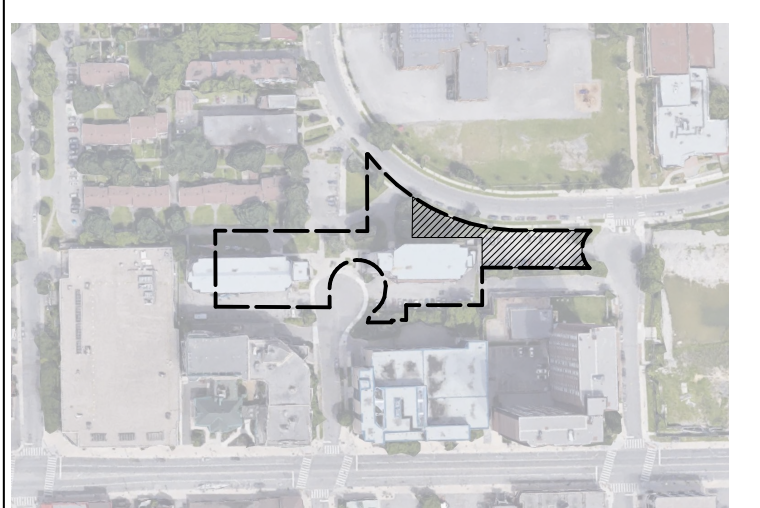
**1 PLANTING PLAN**  
L1-03 Scale: 1:100



**2 PLANTING PLAN**  
L1-03 Scale: 1:100

**Plant List - Basic**

ID	Qty	Botanical Name	Common Name	Size	Flower Color	Comments
AC	7	AMELANCHIER CANADENSIS	SERVICEBERRY	Clump 175 CM WB	White	Pot
ag	56	ALLIUM GIGANTEUM	ORNAMENTAL ONION	1 gal	Purple	Pot
BN	6	BETULA NIGRA	RIVER BIRCH	Clump 50 CM WB		Pot
cc	32	CALAMAGROSTIS CANADENSIS	CANADA BLUE-JOINT	1 gal	-	Pot
CO	5	CELTIS OCCIDENTALIS	COMMON HACKBERRY	50 mm Caliper	Floral Color	Pot
ep	42	ECHINACEA PURPUREA	PURPLE CONEFLOWER	1 gal	Purple	Pot
hy	28	HYDRANGEA ARBORESCENS	ANNABELLE HYDRANGEA	3 gal	White	Pot
jp	28	EUPATORIUM MACULATUM 'GATEWAY'	JOE PYE WEED BONESET	1 gal	Mauve-lilac	Pot
ls	125	LIATRIS SPICATA	DENSE BLAZING STAR	1 gal	Violet, Purple (deep)	Pot
md	20	MONARDA DIDYMA	BEE BALM	1 gal	Scarlet	Pot
pb	22	PHLOX BLUE MOON	WOODLAND PHLOX	1 gal	Violet	Pot
po	6	PHYSOCARPUS OPULIFOLIUS	COMMON NINEBARK	3 gal	White	Pot
ss	28	SCHIZACHYRIUM SCOPARIUM 'BLUE PARADISE'	LITTLE BLUESTEM	1 gal	-	Pot



KEY PLAN, NTS

**LANDSCAPE NOTES**

1. All general site information and conditions compiled from architect's and engineer's plans and surveys.
2. Do not scale this drawing.
3. Report any discrepancies prior to commencing work. No responsibility is born by the Landscape Architect for unknown subsurface conditions.
4. Reinstall all areas and items damaged as a result of construction activities to the satisfaction of the Landscape Architect.
5. Drawing may not be used for construction until signed by Landscape Architect as issued for construction.
6. The accuracy of the position of utilities is not guaranteed.
7. Individual utility co. must be contacted for confirmation of utility existence and location prior to digging.
8. This drawing is an instrument of service and requires the permission of the Landscape Architect for use. Copyright is reserved by the Landscape Architect, David M. Lashley.
9. Plant material shall be No. 1 Grade and shall comply with the Metric Guide Specifications for Nursery stock (latest edition), published by Canadian Nursery Trades Association.
10. Plant substitutions shall not be permitted unless approved by the Landscape Architect.
11. Obtain approval of planting prior to digging.
12. Topsoil shall be garden silt mixture sandy loam with min. 5% organic matter and peat moss added at ratio of 1:10, topsoil to be approved by Landscape Architect.

A 2023-03-22 ISSUED FOR REZONING AND SITE PLAN CONTROL

NO.	DATE	DESCRIPTION
SEAL:		
NORTH:		

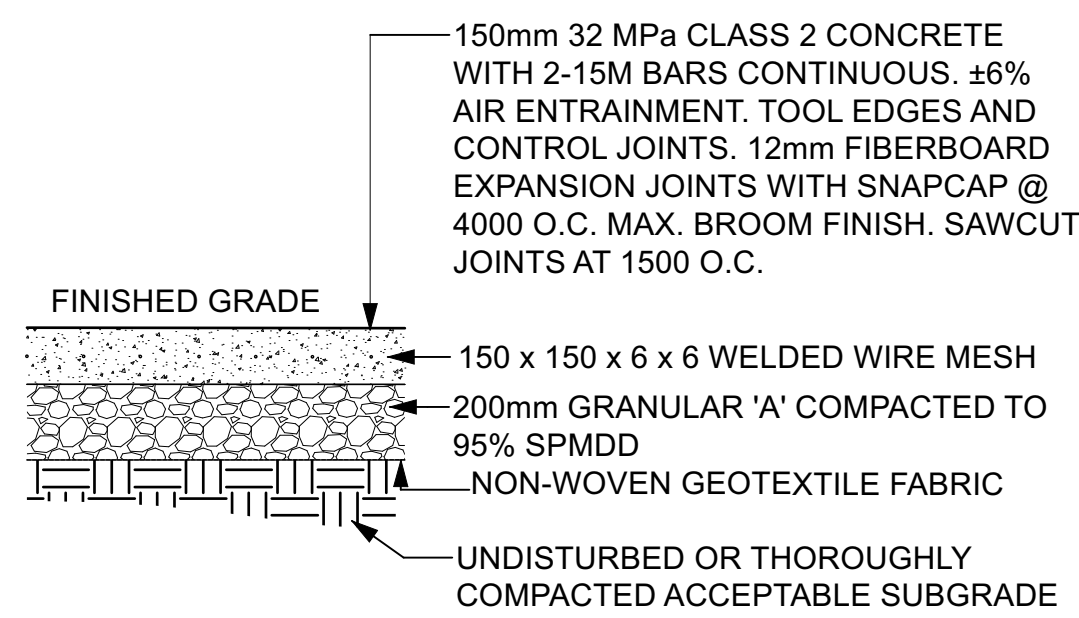


**CONSULTANT:**  
**diamond schmitt**

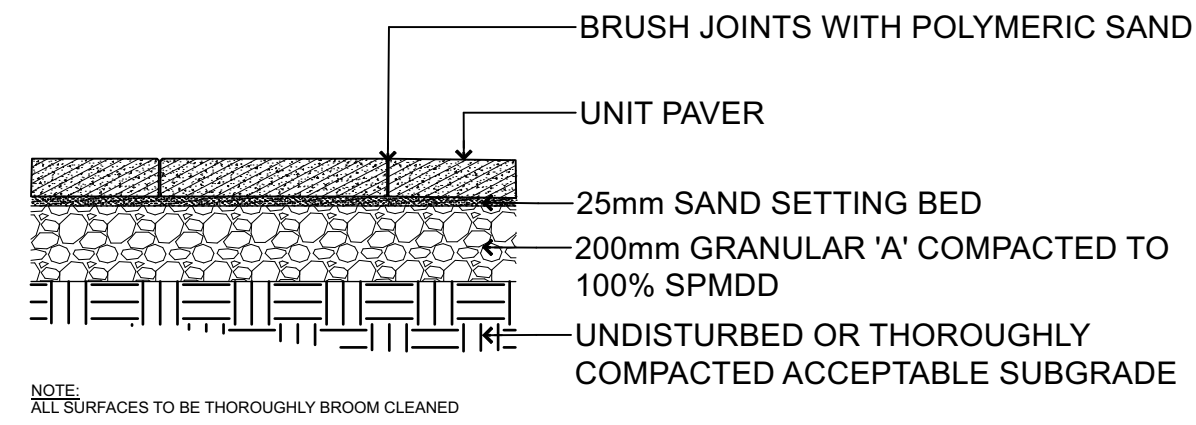
**PROJECT:**  
**OCH 200/201 FREIL STREET**  
200/201 FREIL STREET, OTTAWA, ONTARIO

**DRAWING TITLE:**  
**PLANTING PLAN**

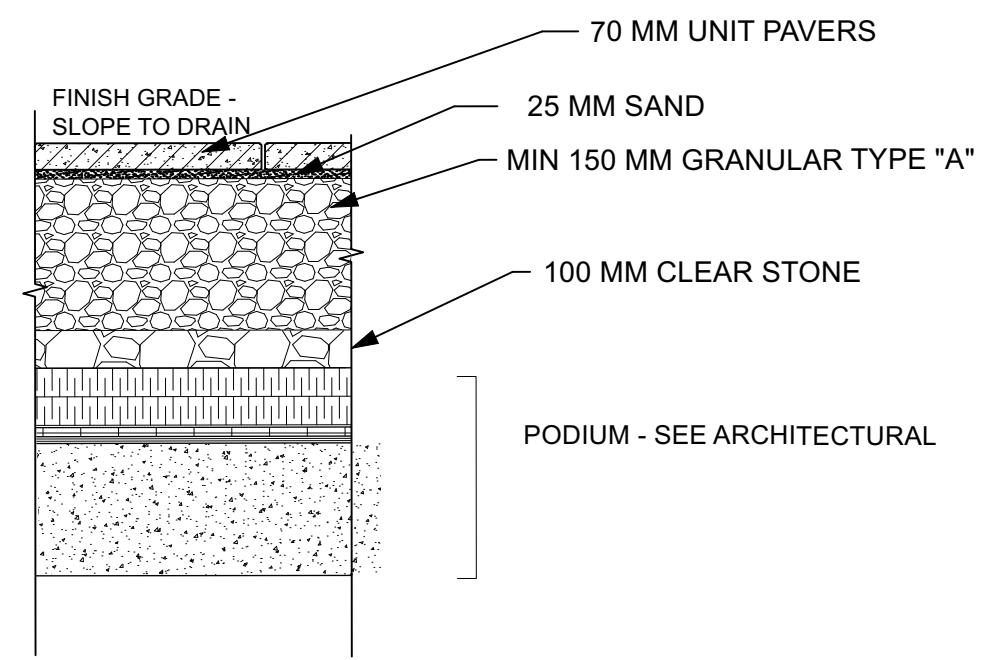
**DATE:** 2023-03-14 **DRAWING NO.:**  
**SCALE:** AS NOTED **L1-03**  
**DRAWN BY:** MH  
**LA PROJECT NO.:** 22844-1



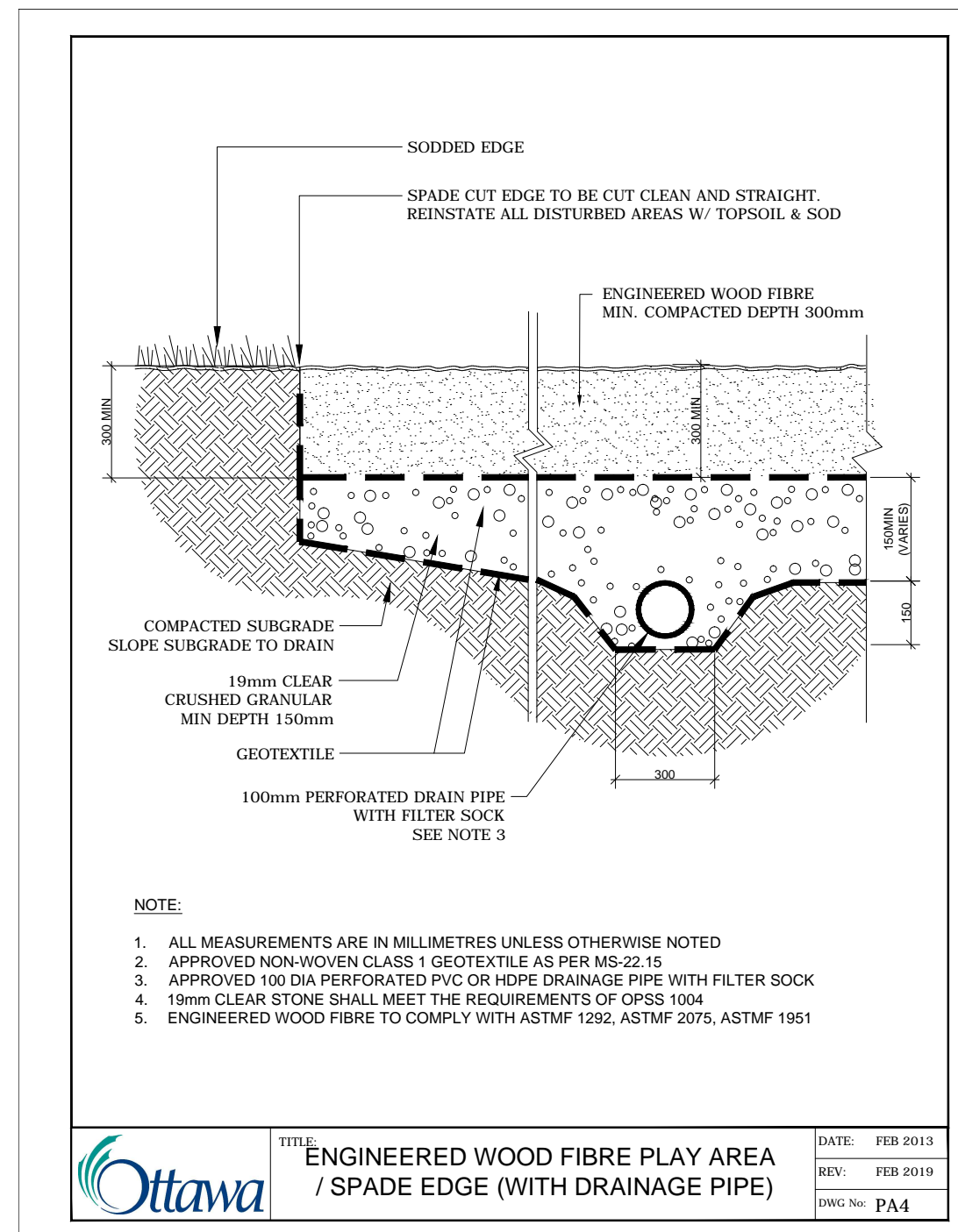
**1 LIGHT DUTY CONCRETE PAVING**  
Scale: 1:20



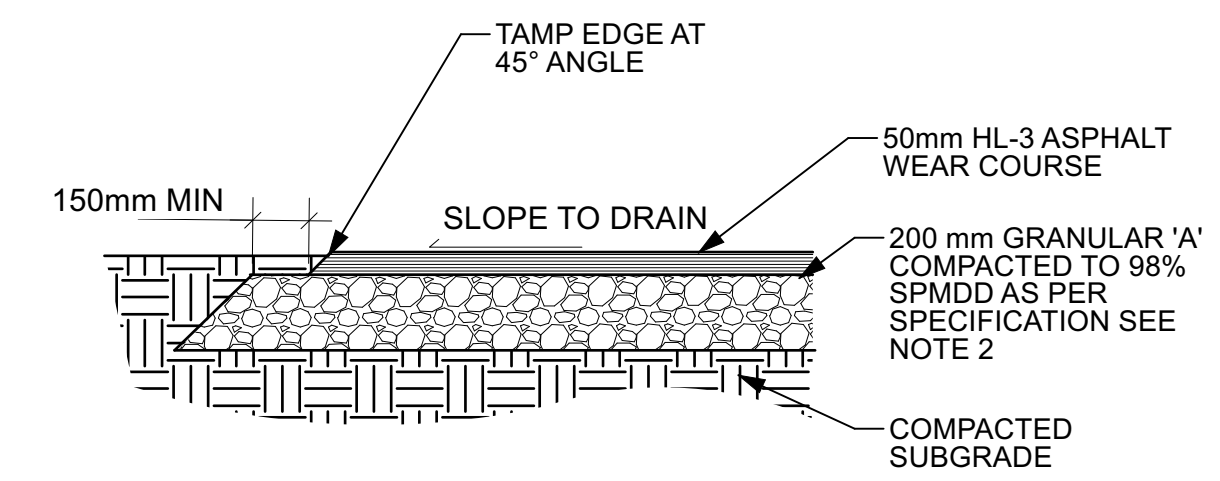
**2 LIGHT DUTY UNIT PAVING**  
Scale: 1:20



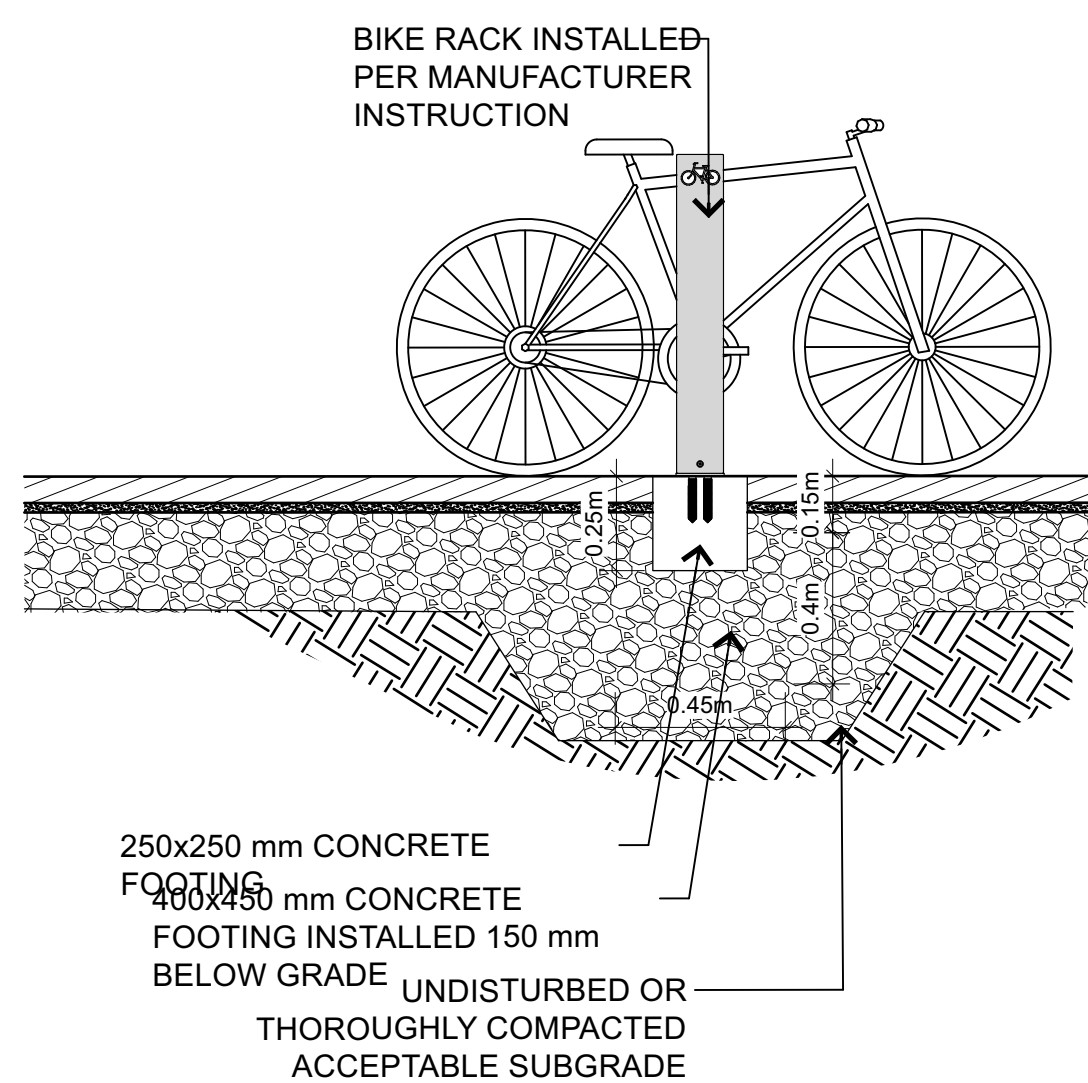
**3 LIGHT DUTY UNIT PAVING ON PODIUM**  
Scale: 1:20



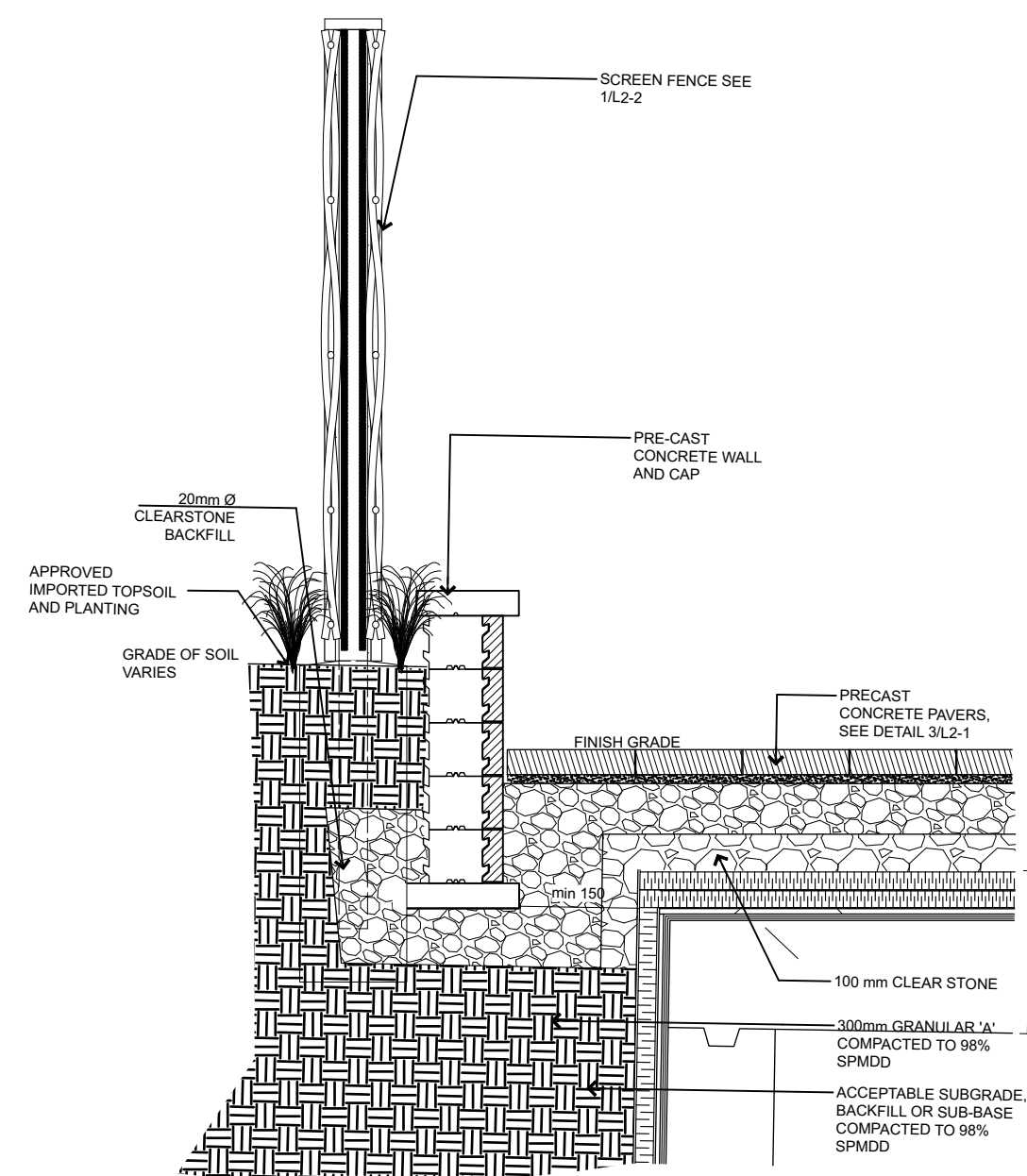
**4 ENGINEERED WOOD FIBRE PLAY AREA**  
Scale: 1:20



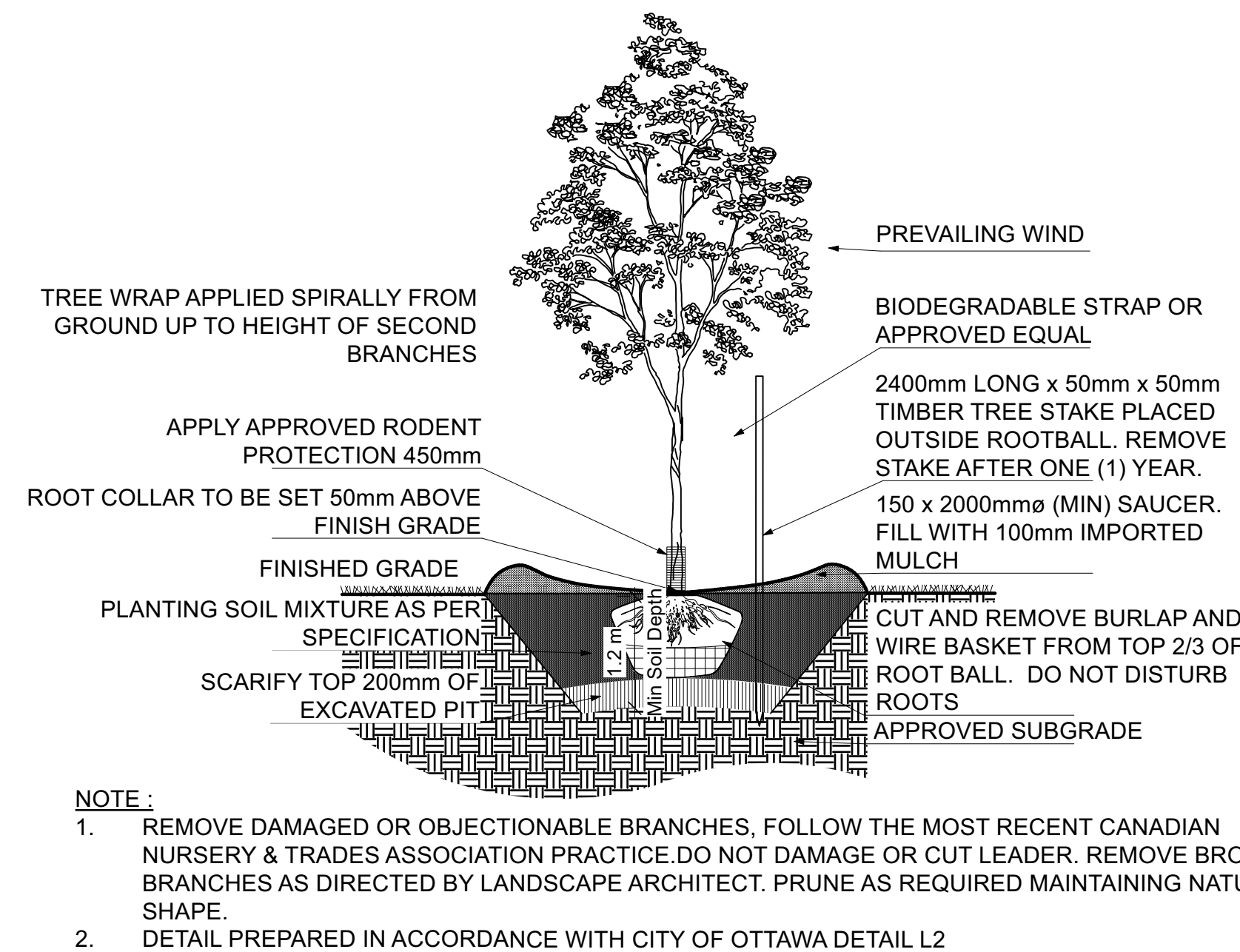
**5 LIGHT DUTY ASPHALT**  
Scale: 1:20



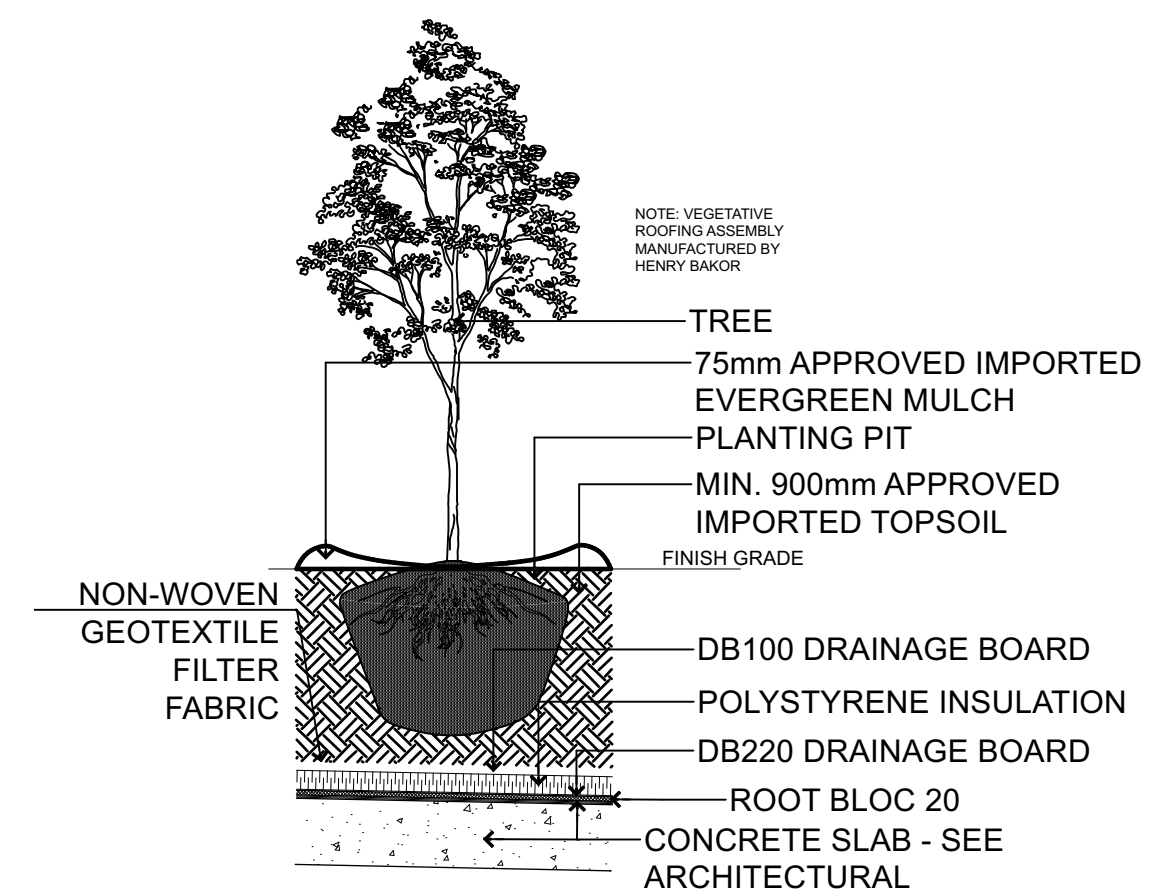
**6 BIKE RACK**  
Scale: 1:20



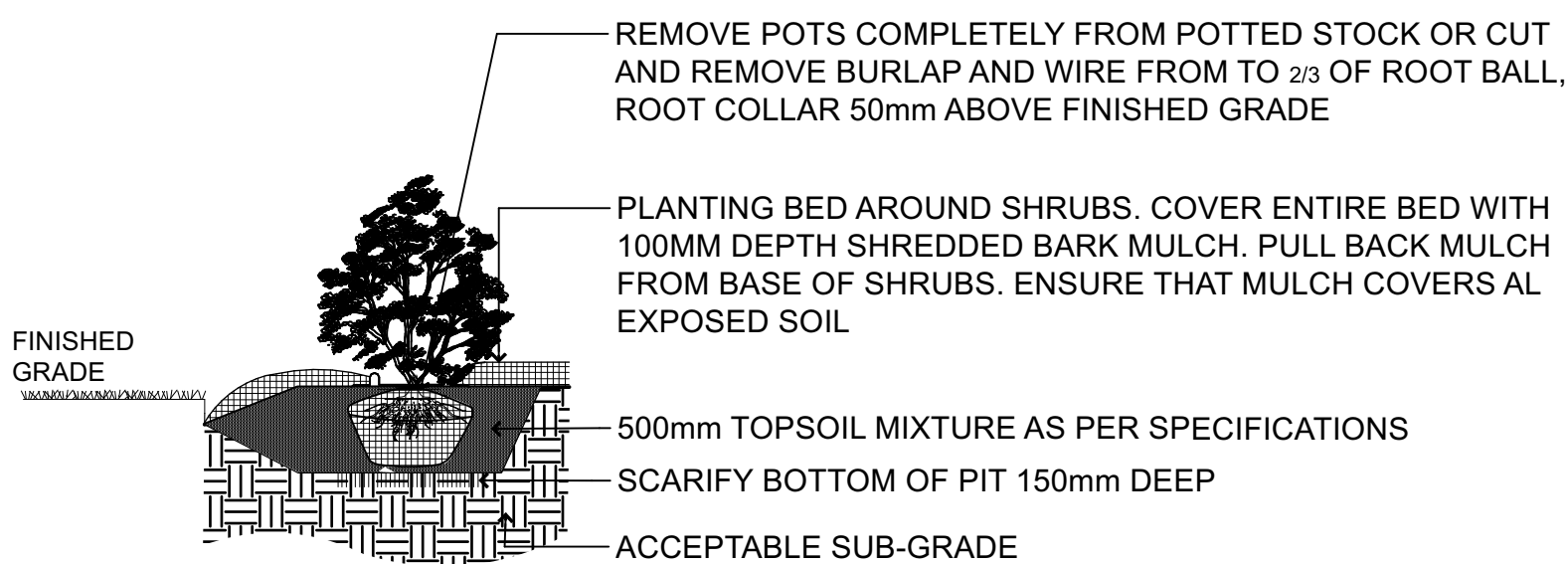
**7 RETAINING WALL**  
Scale: 1:20



**8 DECIDUOUS TREE PLANTING**  
Scale: 1:40

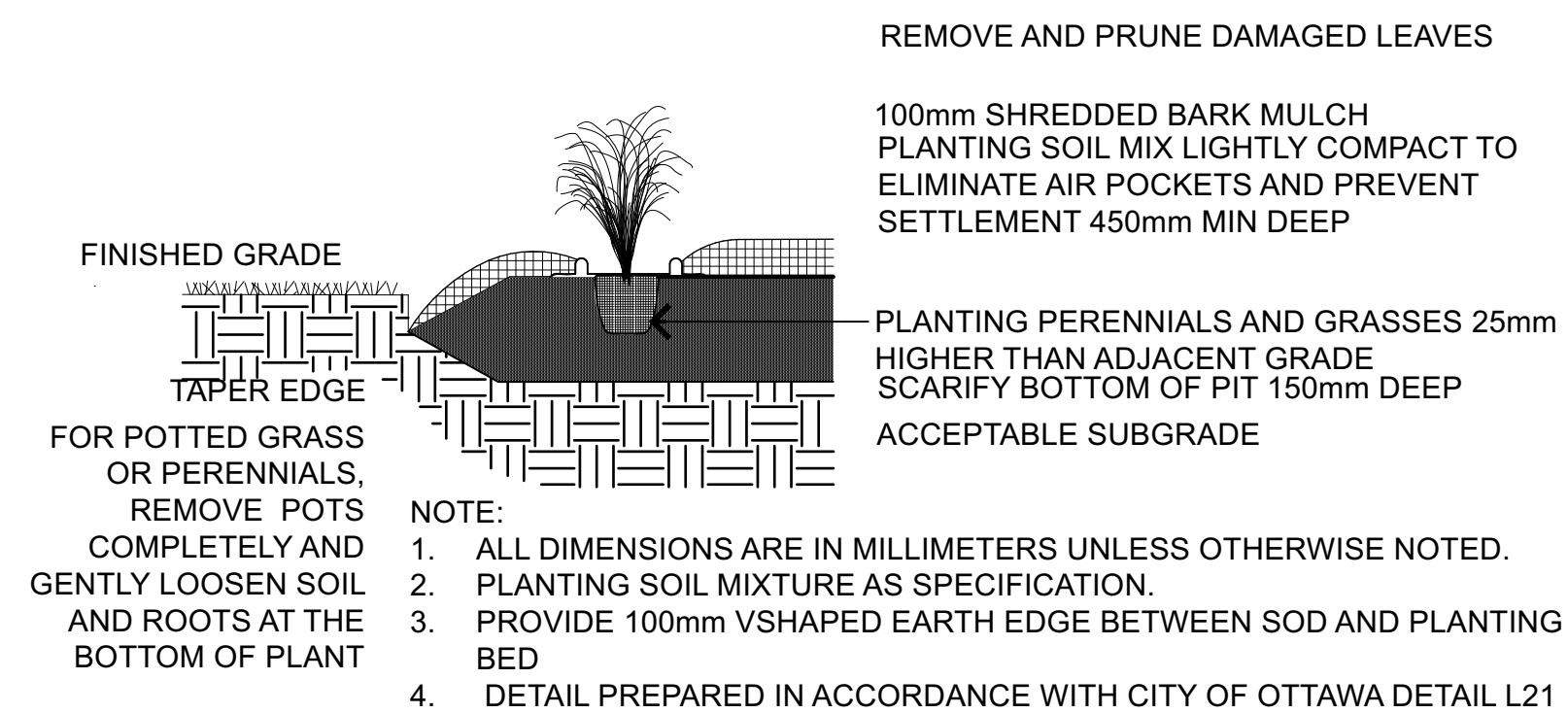


**9 DECIDUOUS TREE PLANTING**  
Scale: 1:40

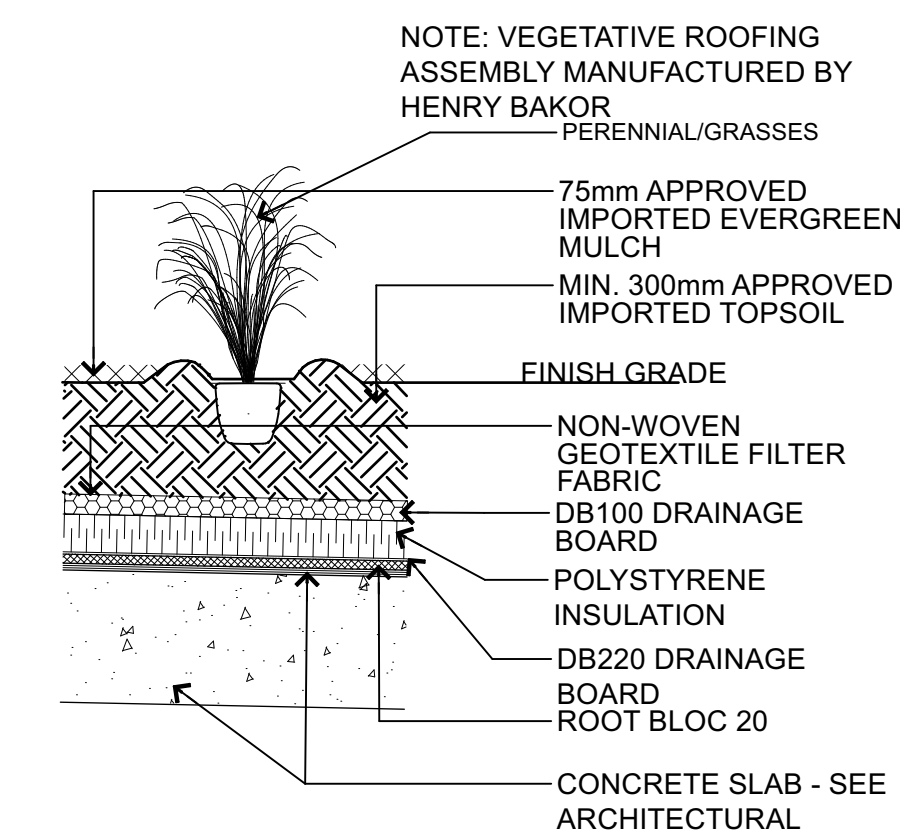


- NOTES:**
1. REMOVE DAMAGED OR OBJECTIONABLE BRANCHES. FOLLOW THE MOST RECENT CANADIAN NURSERY & TRADES ASSOCIATION PRACTICE AND FOLLOW PROPER HORTICULTURAL PRACTICE.
  2. COVER ENTIRE BED WITH 100mm DEPTH MULCH. PULL BACK MULCH FROM BASE OF SHRUBS. ENSURE THAT MULCH COVERS ALL EXPOSED SOIL.
  3. DETAIL PREPARED IN ACCORDANCE WITH CITY OF OTTAWA DETAIL L4

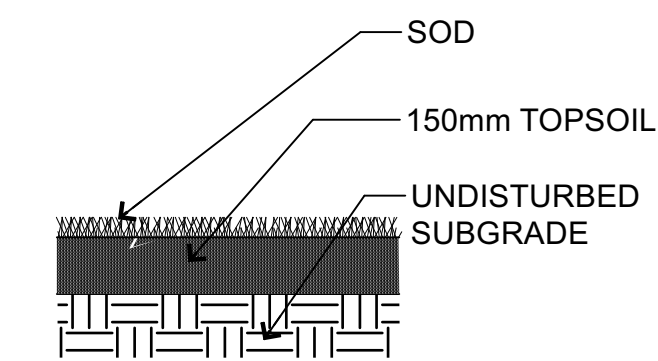
**10 SHRUB PLANTING**  
Scale: 1:30



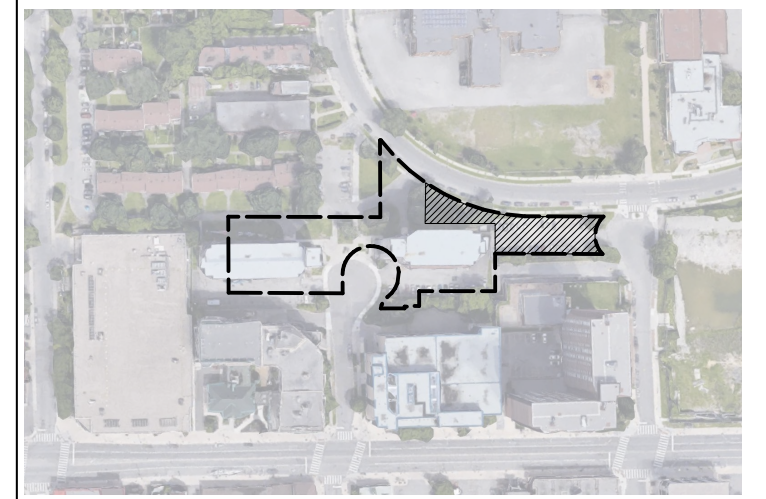
**11 PERENNIAL PLANTING**  
Scale: 1:20



**12 PERENNIAL PLANTING ON PODIUM**  
Scale: 1:20



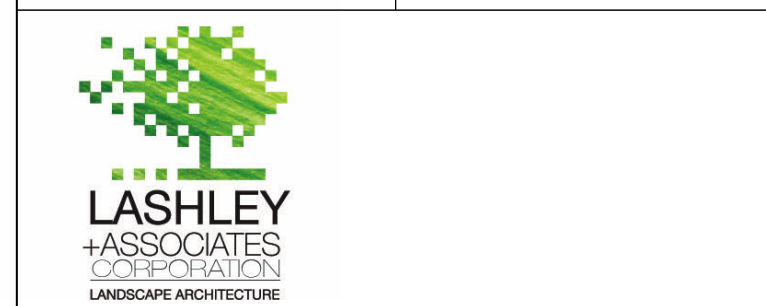
**13 SOD**  
Scale: 1:20



KEY PLAN, NTS

A 2023-03-22 ISSUED FOR REZONING AND SITE PLAN CONTROL

NO.	DATE	DESCRIPTION

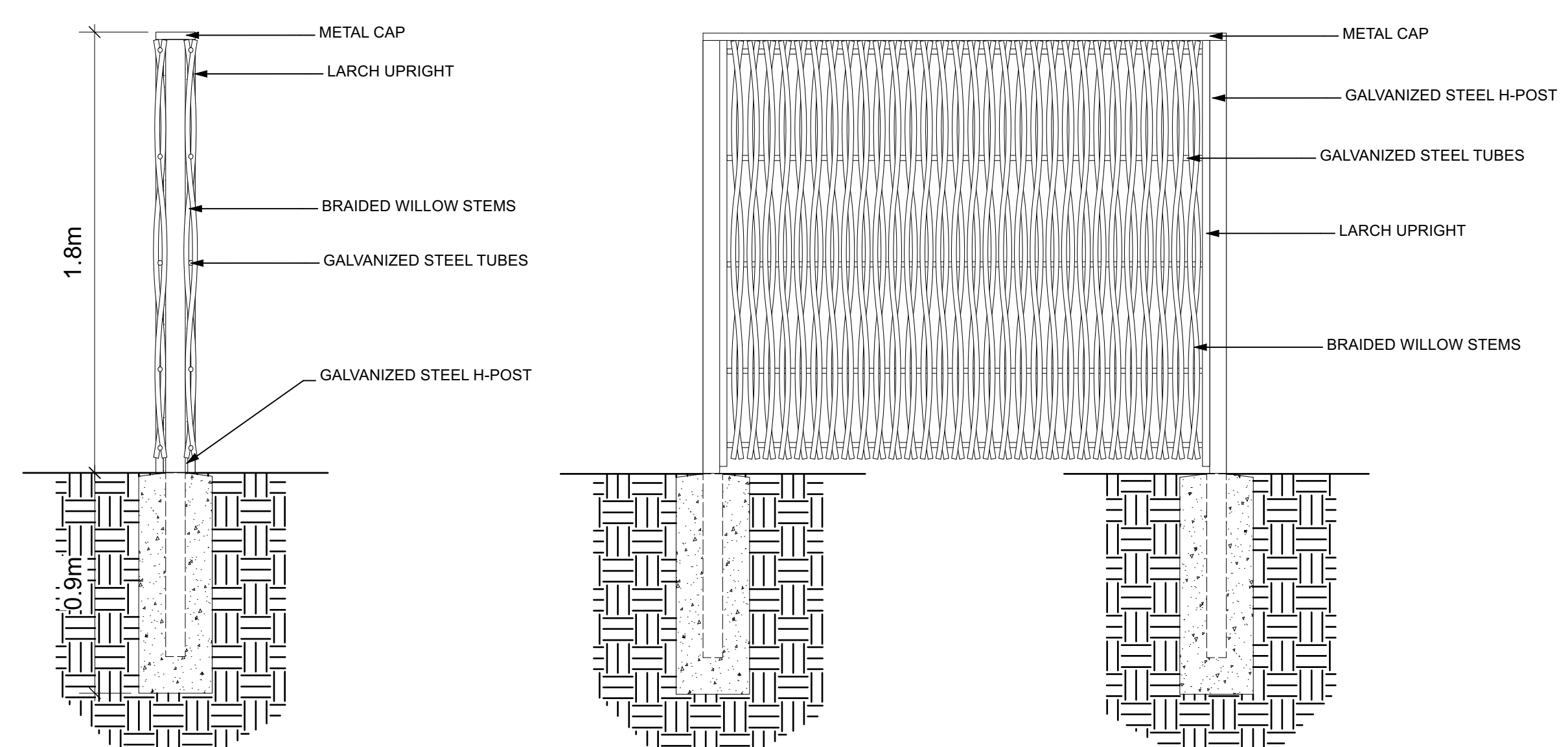


**CONSULTANT:**  
**diamond schmitt**

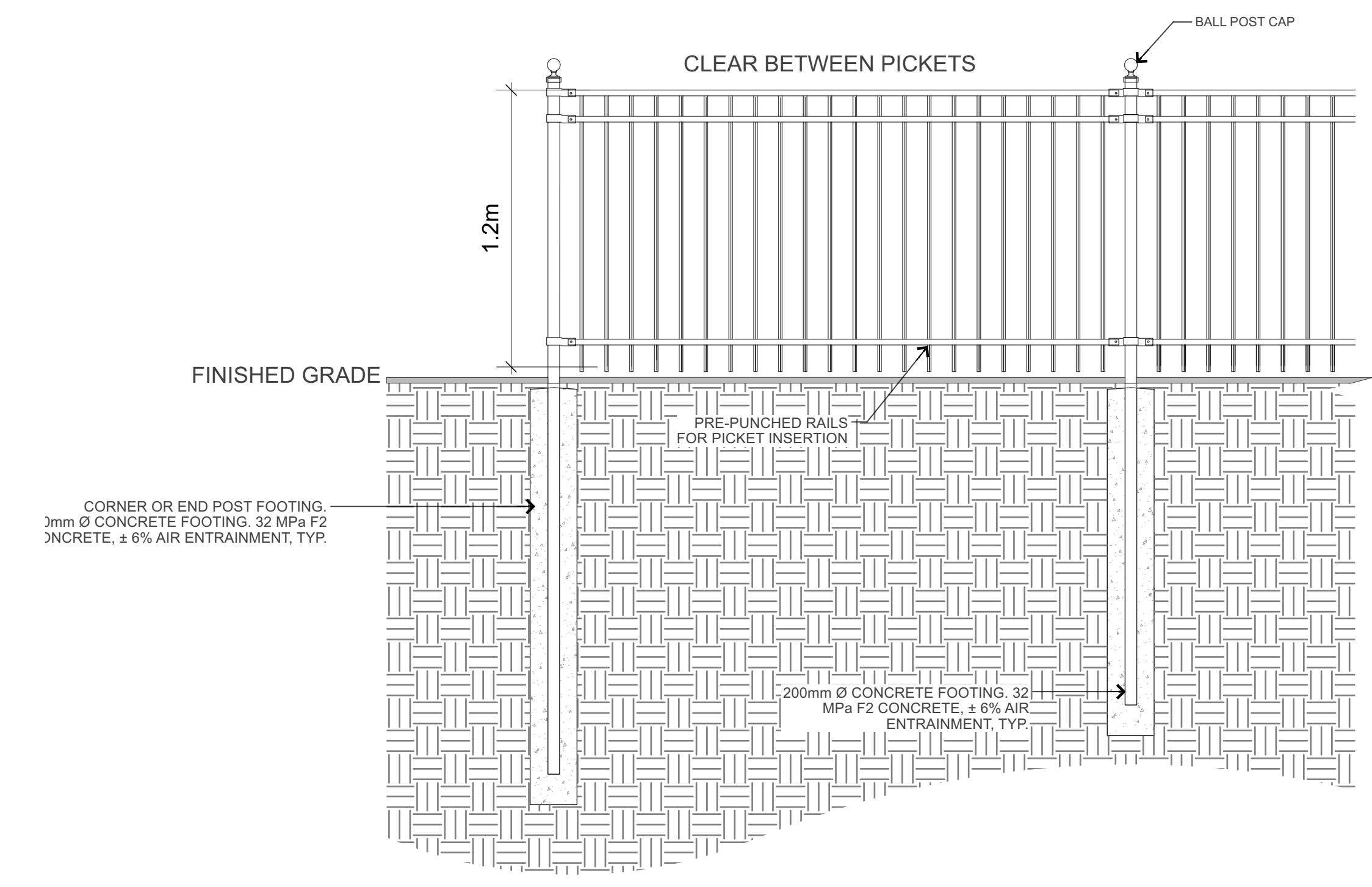
**PROJECT:**  
**OCH 200/201 FREIL STREET**  
200/201 FREIL STREET, OTTAWA, ONTARIO

**DRAWING TITLE:**  
*Detail*

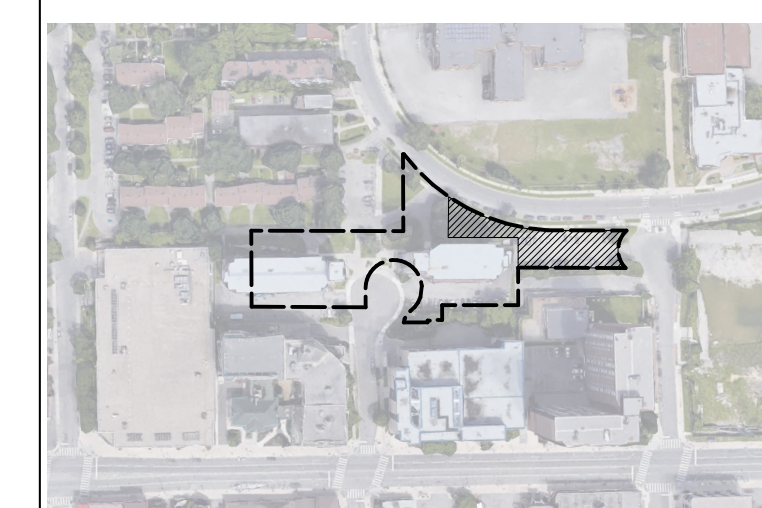
**DATE:** 2023-03-14 **DRAWING NO.:** **L2-01**  
**SCALE:** AS NOTED  
**DRAWN BY:** MH  
**LA PROJECT NO.:** 22844-1



1 SCREEN WILLOW FENCE  
Scale: 1:20



2 ORNAMENTAL STEEL FENCE  
Scale: 1:20



KEY PLAN, NTS

NO.	DATE	DESCRIPTION
A	2023-03-22	ISSUED FOR REZONING AND SITE PLAN CONTROL

SEAL: NORTH:



CONSULTANT:  
**diamond schmitt**

PROJECT:  
**OCH 200/201 FREIL STREET**  
200/201 FREIL STREET, OTTAWA,  
ONTARIO

DRAWING TITLE:  
*Detail*

DATE:	2023-03-14	DRAWING NO.:	<b>L2-02</b>
SCALE:	AS NOTED		
DRAWN BY:	MH		
LA PROJECT NO.:	22844-1		