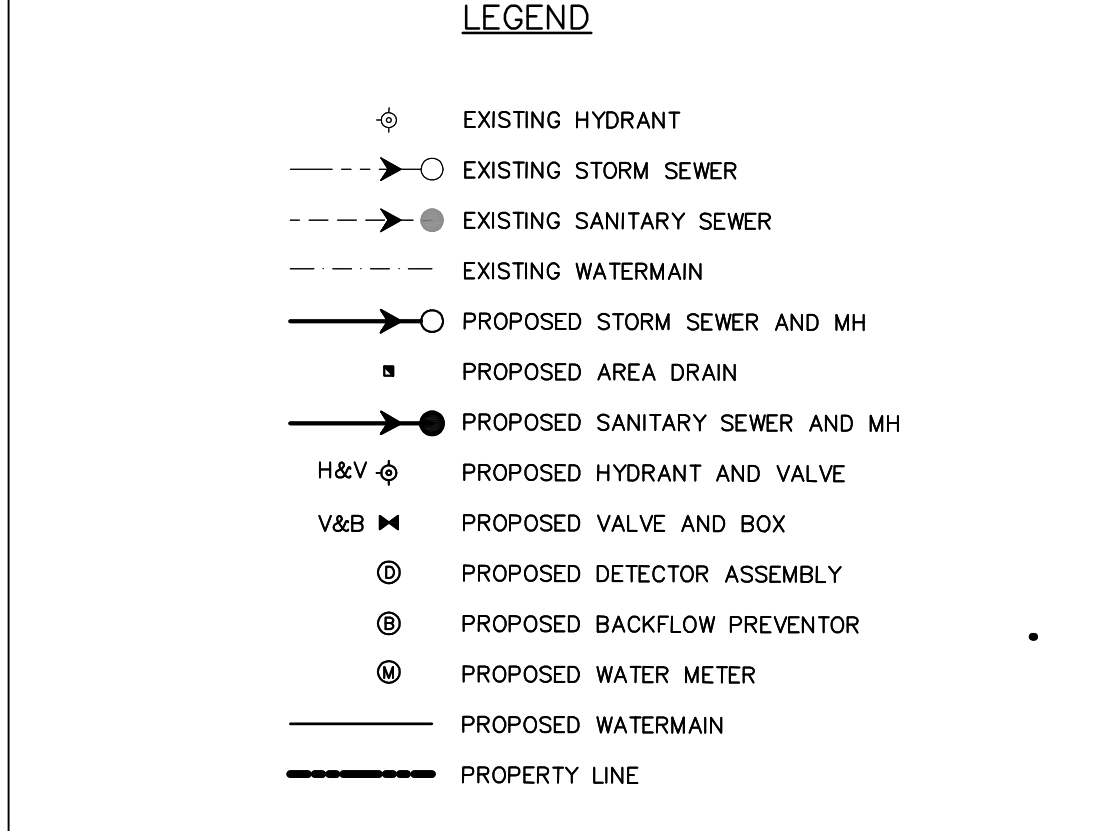
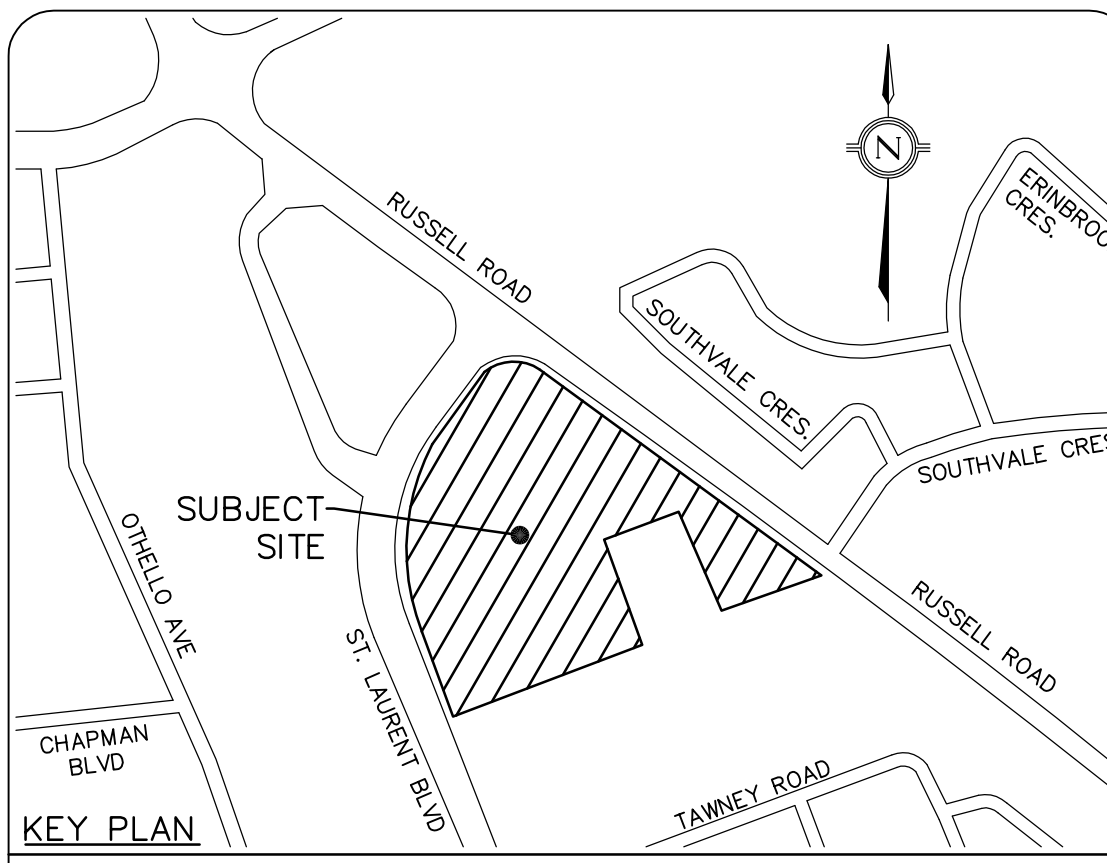


PIPE CLEARANCE TABLE			
CROSSING #	PIPE 1	PIPE 2	CLEARANCE (m)
1	SAN OBV 75.39	EX.WTM INV 75.73	0.360
2	EX.WTM OBV 74.39	SAN INV 74.89	0.500**
3	EX.WTM OBV 74.25	SAN INV 74.75	0.500**
4	EX.WTM OBV 75.05	SAN INV 76.33	1.276
5	WTM OBV 74.98	STM INV 76.17	1.193
6	WTM OBV 75.93	STM INV 76.40	0.466
7	WTM OBV 74.99	STM INV 76.79	0.868
8	WTM OBV 74.99	STM INV 75.49	0.500**
9	WTM OBV 76.11	STM INV 77.14	1.030
10	WTM OBV 76.21	STM INV 76.96	0.749
11	STM OBV 76.00	WTM INV 76.48	0.477
12	STM OBV 76.14	WTM INV 76.59	0.451
13	WTM OBV 76.44	STM INV 77.04	0.600
14	WTM OBV 76.71	STM INV 77.33	0.617
15	STM OBV 75.50	WTM INV 77.00	1.500
16	WTM OBV 75.74	WTM INV 76.24	0.500**
17	SAN OBV 73.54	STM INV 76.35	2.81
18	SAN OBV 74.33	STM INV 77.23	2.90
19	SAN OBV 74.26	STM INV 75.16	0.90
20	SAN OBV 74.12	STM INV 76.87	2.75
21	SAN OBV 74.09	STM INV 76.81	2.72
22	SAN OBV 74.07	STM INV 76.83	2.76
23	SAN OBV 74.06	STM INV 76.91	2.84
24	STM OBV 73.84	STM INV 72.01	1.19
25	SAN OBV 75.12	STM INV 76.31	3.18
26	SAN OBV 73.80	STM INV 76.95	3.15

NOTE: \*\*WATERMAIN TO BE DEFLECTED TO ALLOW A MIN 0.5m OF CLEARANCE.

Hydrant Coverage Table		
Hydrant No.	BUILDING	DISTANCE(m)
1	A	40.50
2	B	29.13
3	C	31.47

WATERMAIN TABLE			
STATION	PROPOSED GROUND ELEVATION	PROPOSED WM OBVERT	DESCRIPTION
LINE A			
0+002	77.29	74.89	VALVE AND BOX
0+007	77.41	75.01	VALVE AND BOX
0+059	78.25	75.85	VALVE AND BOX
0+061	78.3	75.9	200X200X200 TEE
0+093	78.52	76.12	200X200X200 TEE
0+111	78.86	76.46	200X200X150 TEE
0+150	78.71	76.31	45° BEND
0+152	78.61	76.21	250X250X200 TEE
0+160	78.55	76.15	250X200X200 TEE
0+197	78.65	76.25	200X200X150 TEE
0+212	78.9	76.5	45° BEND
0+229	79.07	76.67	200X200X150 TEE
0+238	79.17	76.77	200X200X150 TEE
0+240	79.19	76.79	VALVE AND BOX
0+280	78.9	76.5	45° BEND
0+409	78.48	76.08	22.5° BEND
0+441	78.16	75.76	45° BEND
0+453	78.13	75.73	22.5° BEND
0+466	78.09	75.69	90° BEND
LINE B			
0+022	78.58	76.18	45° BEND
0+053	78.11	75.71	VALVE AND BOX
0+066	78.07	75.67	VALVE AND CHAMBER
0+067	78.09	75.69	TAPPING SLEEVE AND VALVE
LINE C			
0+006	79.21	76.81	VALVE AND BOX
0+019	78.84	76.44	45° BEND
LINE D			
0+008	78.37	75.97	90° BEND
0+095	78.65	76.25	VALVE AND BOX



**LEGAL & TOPOGRAPHY**  
 PROVIDED BY: ANNE O'SULLIVAN, VOLLEBERG LTD.  
 14 CONROUSE GATE, SUITE 500  
 NAPAN, ONTARIO, K2E 7S8  
 PHONE: (613) 727-0850

**BENCHMARK**  
 NOTE: BEARINGS ARE ASTROMONIC, DERIVED FROM THE EASTERLY LIMIT OF ST. LAURENT BOULEVARD, SHOWN TO BE N21°15'15"W

**ELEVATION NOTE**  
 NOTES: ELEVATIONS SHOWN ARE GEODETIC AND ARE REFERRED TO THE CGVD25 GEODETIC DATUM.

NO.	ISSUED FOR	DATE	BY
01	ISSUED FOR COORDINATION	MAR 17, 2023	J.Y.
02	ISSUED FOR SITE PLAN APPLICATION APPROVAL #1	MAR 17, 2023	J.Y.
03	ISSUED FOR SITE PLAN APPLICATION APPROVAL #2	MAR 17, 2023	J.Y.
04	ISSUED FOR SITE PLAN APPLICATION APPROVAL #3	MAR 17, 2023	J.Y.

**counterpoint** ENGINEERING  
 COUNTERPOINT ENGINEERING INC.  
 8888 BAYVIEW AVE., SUITE 100, MARKHAM, ONTARIO L3R 9V7  
 PHONE: (905) 477-8888 FAX: (905) 477-8889

**APPLICANT:**  
**STARLIGHT DEVELOPMENTS INC.**  
 3280 BLOOR STREET WEST, CENTRE TOWER - UNIT# 1400  
 TORONTO, ONTARIO M8X 2X3  
 PHONE: (416) 224-8444  
 FAX: (416) 855-0192  
 CONTACT: MATTHEW CELLUCCI

**SITE LOCATION:**  
**PROPOSED RESIDENTIAL DEVELOPMENT**  
 MULTI-UNIT RESIDENTIAL TOWER DEVELOPMENT  
 1971 & 1975 ST. LAURENT BLVD., OTTAWA

SITE SERVICING PLAN			
DESIGNED BY	CHECKED BY	DATE	PROJECT NO.
G.B.	J.Y.	MAR 11, 2022	21106
SCALE: 1:400m	DRAWING NO.	SW-S	