

ROAD GRADE	106.872 107.000 106.872 107.000 106.938 106.900 106.888 107.118 107.150 106.994 106.900 106.885 107.100 107.075 106.973 106.900 106.928 107.010 106.883 106.850 106.820	ROAD GRADE	(OTTAWA, ON)
TOP OF WATERMAIN	104.128 104.062 104.151 104.200 104.138 104.100 104.188 104.318 104.350 104.302 104.231 104.184 104.100 104.185 104.196 104.249 104.300 104.275 104.173 104.100 104.128 104.207 104.210 104.081 104.083 104.085 106.950 106.820	TOP OF WATERMAIN	
STM SEWER INVERT	103.615SE 103.690NW 103.840NE 73.05m - 375mmØ PVC DR-35 STM @ 0.25% 104.023SW 104.189SE 104.184 104.100 104.185 104.196 104.249 104.300 104.275 84.97m - 375mmØ PVC DR-35 STM @ 0.25% 104.173 104.100 104.128 104.207 104.210 104.081 104.083 104.085 106.950 106.820	STM SEWER INVERT	
SAN SEWER INVERT	102.828SE 102.811SW 103.082NE 73.45m - 200mmØ PVC DR-35 SAN @ 0.65% 104.023SW 104.189SE 104.184 104.100 104.185 104.196 104.249 104.300 104.275 81.60m - 200mmØ PVC DR-35 SAN @ 0.65% 104.173 104.100 104.128 104.207 104.210 104.081 104.083 104.085 106.950 106.820	SAN SEWER INVERT	
STATION	0+100 0+102.57 BEND 0+105.30 1/4 BEND 0+107.57 HYD 0+120 0+140 0+160 0+169.57 1/4 BEND 0+176.44 1/4 BEND 0+179.692 HYD 0+180 0+200 0+201.52 1/4 BEND 0+208.40 1/4 BEND 0+220 0+240 0+241.94 HYD 0+260 0+275.71 1/4 BEND 0+280 0+281.59 0+100 0+103.08 BEE 0+110.717 HYD 0+120 0+140 0+149.165 HYD 0+160 0+180 0+191.09 CAP 0+200	STATION	

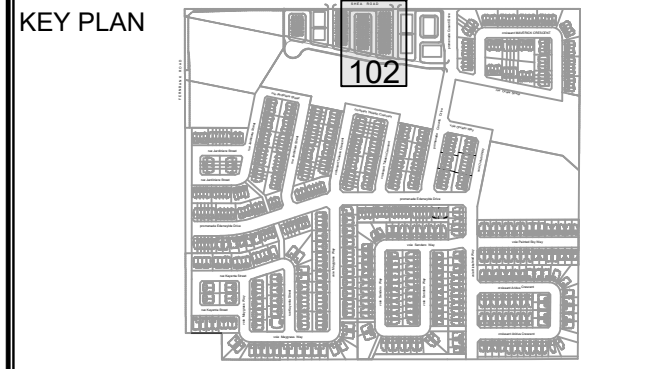
CLIENT
**DAVIDSON SHEA
PROPERTY INC.**

COPYRIGHT
This drawing has been prepared solely for the intended use. Any reproduction or distribution for any purpose other than authorized by IBI Group is forbidden. Written dimensions shall have precedence over stated dimensions. Contractors shall verify and be responsible for all dimensions and conditions on the job, and IBI Group shall be informed of any variations from the dimensions and conditions shown on the drawing. Shop drawings shall be submitted to IBI Group for general conformance before proceeding with fabrication.
IBI Group Professional Services (Canada) Inc.
is a member of the IBI Group of companies.

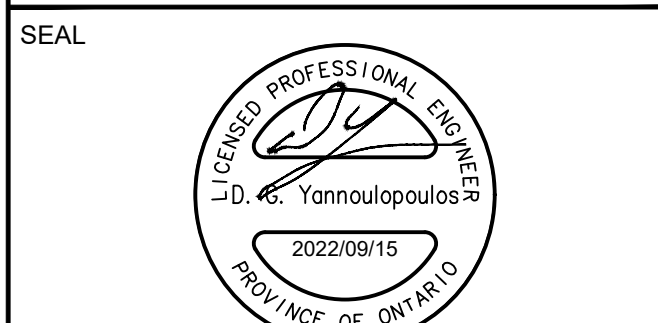
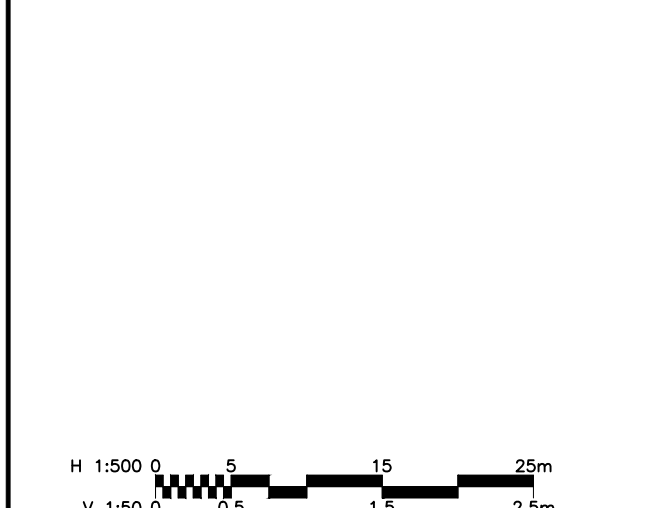
ISSUES

No.	DESCRIPTION	DATE
1	SUBMISSION NO.1 FOR CITY REVIEW	2022-09-15
2		
3		
4		
5		
6		
7		
8		

SEE 010, 011, 012 FOR NOTES, LEGEND, CB TABLE, STREET SECTIONS AND DETAILS.



CONSULTANTS



IBI GROUP
Suite 400 - 333 Preston Street
Ottawa ON K1S 5N4 Canada
Tel: 613 225 1311 / 613 241 3300 Fax: 613 225 9868
ibigroup.com

PROJECT
1650 SHEAR ROAD
(OTTAWA, ON)

PROJECT NO:
139185
DRAWN BY:
M.M.
PROJECT MGR:
R.M.

CHECKED BY:
A.C./A.B.
APPROVED BY:
D.G.Y.

SHEET TITLE
PRIVATE LANE 4 & 5

SHEET NUMBER
102
ISSUE
1