

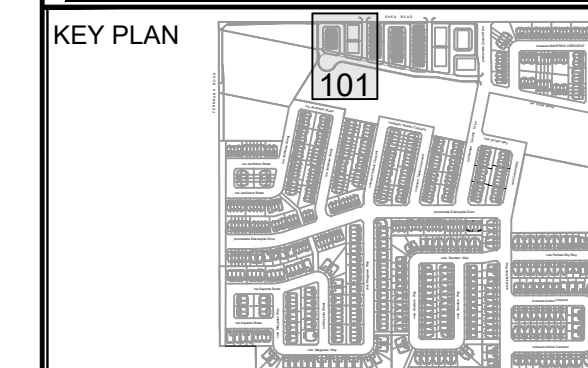
CLIENT
**DAVIDSON SHEA
PROPERTY INC.**

COPYRIGHT
This drawing has been prepared solely for the intended use. Any reproduction or distribution for any purpose other than authorized by IBI Group is forbidden. Written dimensions shall have precedence over scaled dimensions. Contractors shall verify and be responsible for all dimensions and conditions on the job, and IBI Group shall be informed of any variations from the dimensions and conditions shown on the drawing. Shop drawings shall be submitted to IBI Group for general concurrence before proceeding with fabrication.

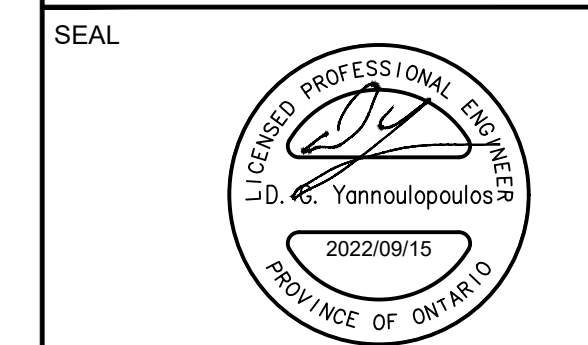
IBI Group Professional Services (Canada) Inc.
is a member of the IBI Group of companies.

ISSUES		
No.	DESCRIPTION	DATE
1	SUBMISSION NO. 1 FOR CITY REVIEW	2022-09-15
2		
3		
4		
5		
6		
7		
8		

SEE 010, 011, 012 FOR NOTES, LEGEND, CB TABLE, STREET SECTIONS AND DETAILS.



CONSULTANTS



IBI GROUP
Suite 400 - 333 Preston Street
Ottawa ON K1S 5N4 Canada
Tel: 613 225 1311 / 613 241 3300 Fax: 613 225 9868
ibigroup.com

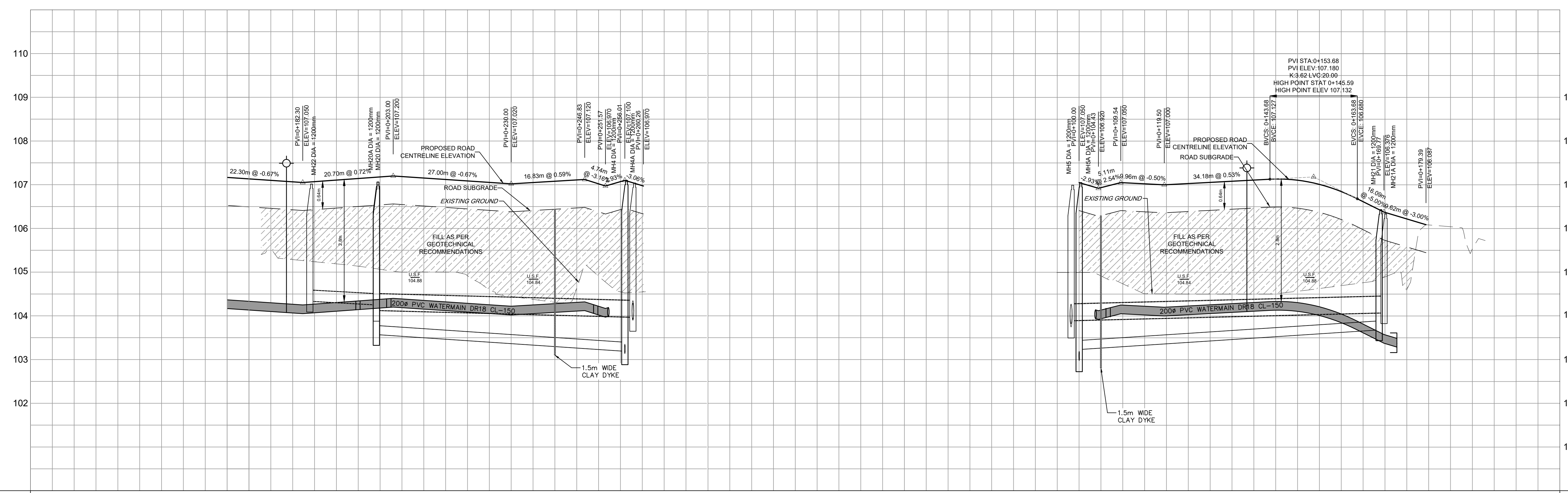
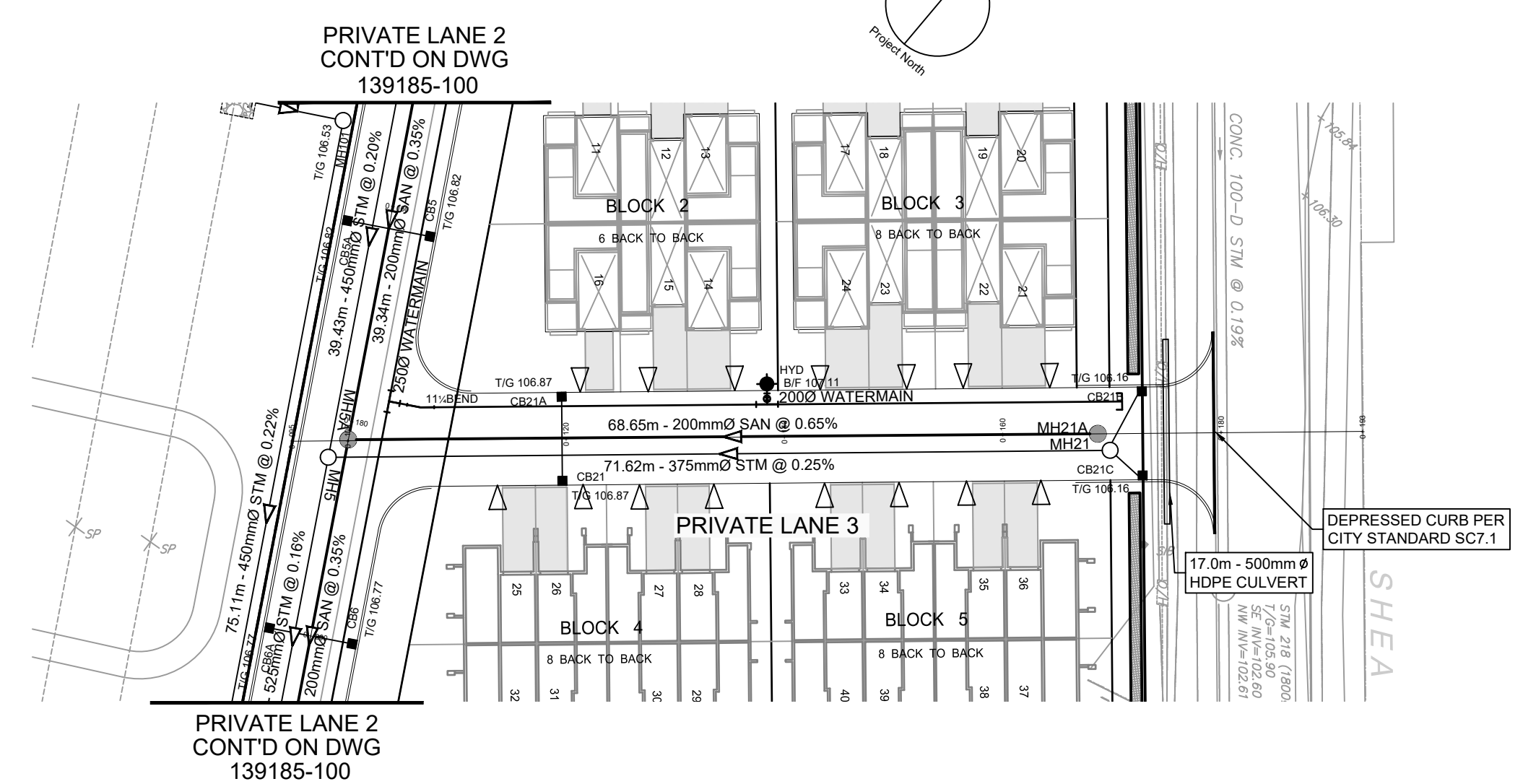
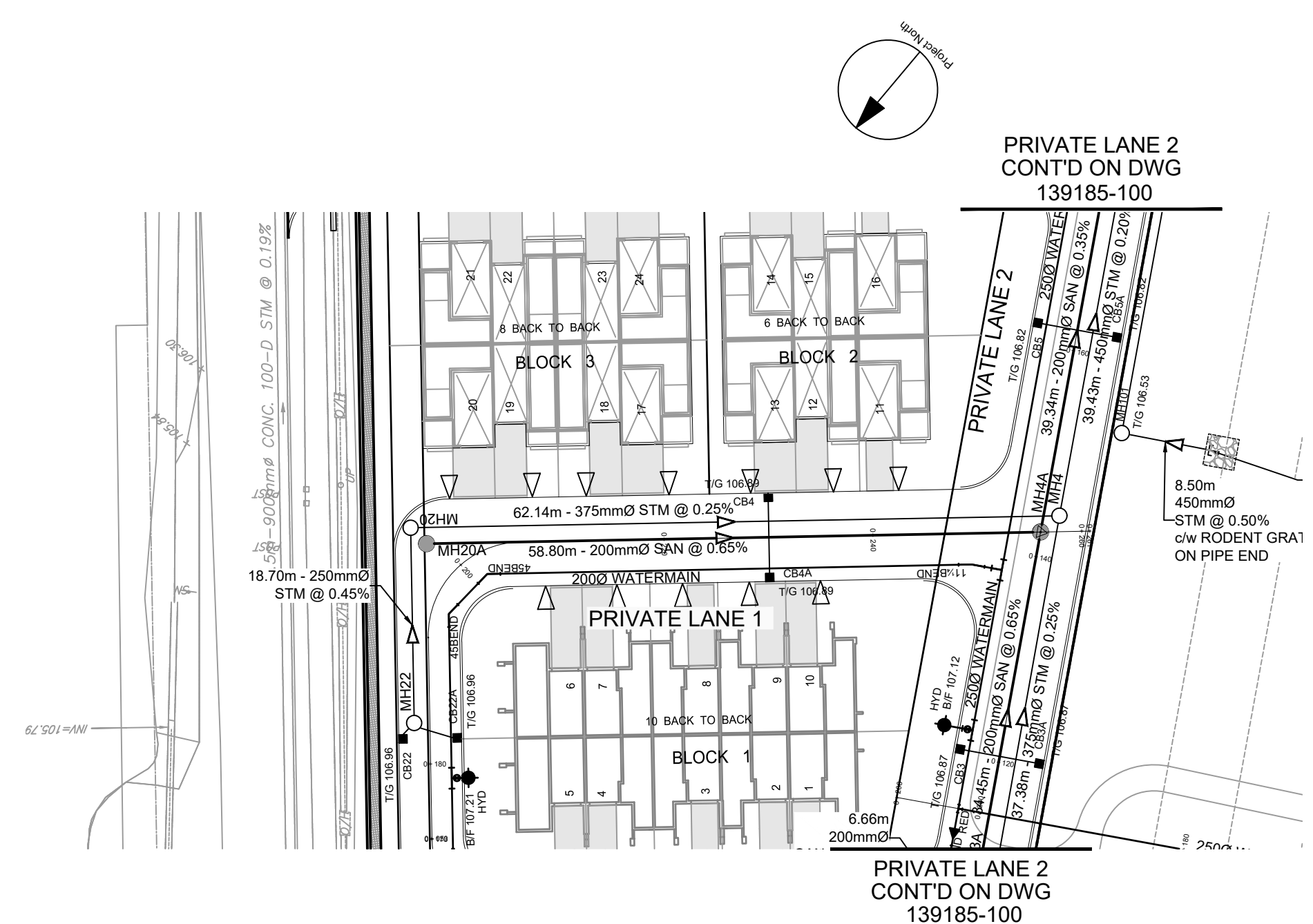
PROJECT
1650 SHEA ROAD
(OTTAWA, ON)

PROJECT NO:
139185
DRAWN BY:
M.M.
PROJECT MGR:
R.M.

CHECKED BY:
A.C./A.B.
APPROVED BY:
D.G.Y.

SHEET TITLE
PRIVATE LANE 1 & 3

SHEET NUMBER
101
ISSUE
1



ROAD GRADE	TOP OF WATERMAIN	STM SEWER INVERT	SAN SEWER INVERT	STATION	ROAD GRADE	TOP OF WATERMAIN	STM SEWER INVERT	SAN SEWER INVERT	STATION
107.065 107.050	104.275 104.265 104.250	104.338SE 18.70m 250mmØ PVC DR-35 STM @ 0.45%	0+194.94 45 BEND 103.576SW 104.123SW 0+202.00 45 BEND	0+180	107.087 107.020 107.079 107.120 106.970 107.100 106.878	104.342 104.378 104.393 104.403 104.413	62.14m - 375mmØ PVC DR-35 STM @ 0.25%	58.80m - 200mmØ PVC DR-35 SAN @ 0.65%	0+220
				0+240					
				0+260					
				0+080					
				0+100					
				0+120					
				0+140					
				0+160					
				0+180					

CITY FILE No. D07-1500
SCALE CHECK
File Location: \\139185_1650_Shea_Ror7_0_Production\7_03_Design\04_Civil\Sheeta\101-LOOP_1.dwg Last Saved: September 8, 2022, by rmlhse Plotted: Thursday, September 15, 2022 8:24:51 AM by Stefan Geisler