

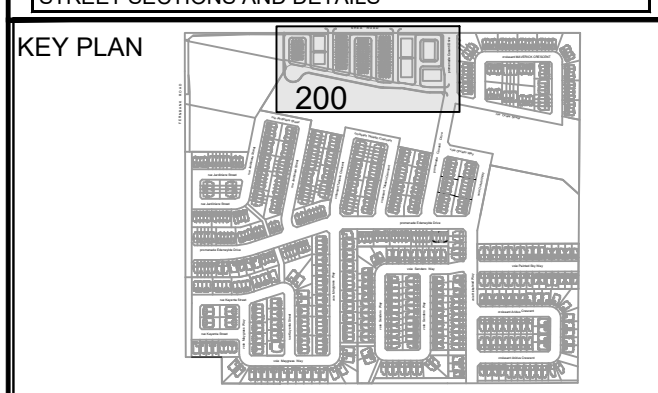
CLIENT
**DAVIDSON SHEA
 PROPERTY INC.**

COPYRIGHT
 This drawing has been prepared solely for the intended use, and any reproduction or distribution for any purpose other than that authorized by IBI Group is forbidden. Written dimensions shall have precedence over scaled dimensions. Contractors shall verify and be responsible for all dimensions and conditions on the job, and IBI Group shall be informed of any variations from the dimensions and conditions shown on the drawing. Shop drawings shall be submitted to IBI Group for general concurrence before proceeding with fabrication.

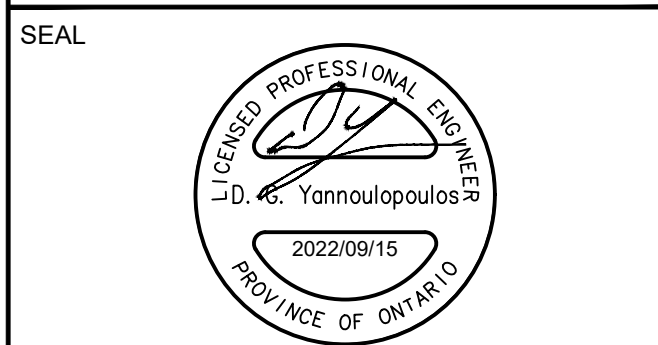
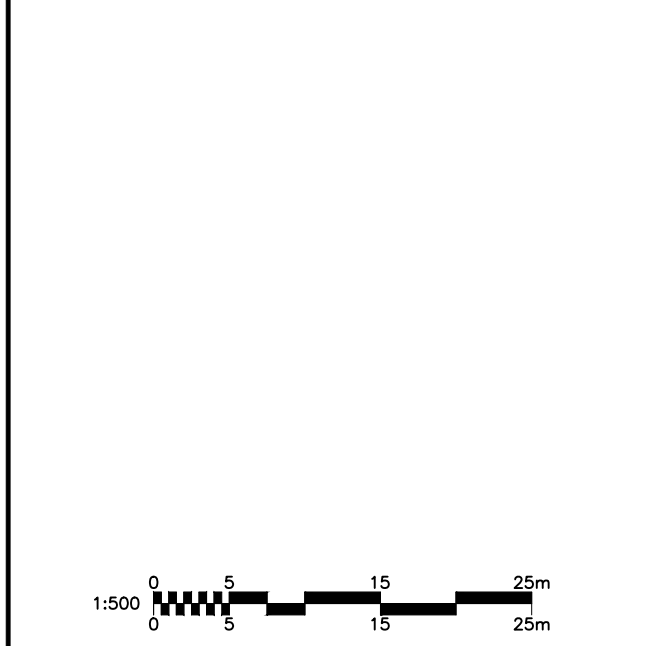
IBI Group Professional Services (Canada) Inc.
 is a member of the IBI Group of companies.

ISSUES		
No.	DESCRIPTION	DATE
1	SUBMISSION NO. 1 FOR CITY REVIEW	2022-09-15
2		
3		
4		
5		
6		
7		
8		

SEE 010, 011, 012 FOR NOTES, LEGEND, CB TABLE, STREET SECTIONS AND DETAILS



CONSULTANTS



GRADING LEGEND

- PROPOSED DITCH CW FLOW DIRECTION AND SLOPE
- SLOPE CW FLOW DIRECTION
- MAJOR OVERLAND FLOW ROUTE
- PROPOSED SPOT GRADE
- PROPOSED SWALE HIGH POINT GRADE
- LOT CORNER GRADE C/W EXISTING GRADE
- FULL STATIC PONDING GRADE
- RETAINING WALL C/W TOP OF WALL AND GRASS GRADE
- TERRACING 3:1 MAXIMUM UNLESS NOTED OTHERWISE
- PRESSURE REDUCING VALVE
- FINISHED FLOOR ELEVATION
- TOP OF FOUNDATION ELEVATION
- UNDERSIDE OF FOOTING ELEVATION
- MINIMUM UNDERSIDE OF FOOTING (Based on the higher of the sewer oververts, or hydraulic grade line)
- MINIMUM GARAGE GRADE
- WALKUP UNIT
- WALKOUT UNIT
- NON-STANDARD FOUNDATION (Frost cover not provided for standard unit)
- HIGHBACK UNIT (1.5m frost cover on footings)
- NOISE BARRIER LOCATION
- NOISE BARRIER GATE
- RIP-RAP
- TOWN HOUSE SPLITS

IBI GROUP
 400 - 333 Preston Street
 Ottawa ON K1S 5M4 Canada
 tel 613 225 1311 fax 613 225 9868
 ibigroup.com

PROJECT
1650 SHEA ROAD
 (OTTAWA, ON)

PROJECT NO:
139185

DRAWN BY:
M.M. CHECKED BY:
A.C./A.B.

PROJECT MGR:
R.M. APPROVED BY:
D.G.Y.

SHEET TITLE
GRADING PLAN

SHEET NUMBER
200 ISSUE
1