

NORTH ELEVATION

UNIT #286
TYPE 'A' END
OPT 3RD FLR #1
CIVIC# 517 SR

UNIT #279
TYPE 'B' END REV
OPT 3RD FLR #1
CIVIC# 609 CS




EAST ELEVATION

UNIT #283
TYPE 'B' END REV
OPT 3RD FLR #1
CIVIC# 511 SR

UNIT #284
TYPE 'A'
OPT 3RD FLR #1
CIVIC# 513 SR

UNIT #285
TYPE 'B' REV
OPT 3RD FLR #1
CIVIC# 515 SR

UNIT #286
TYPE 'A' END
OPT 3RD FLR #1
CIVIC# 517 SR

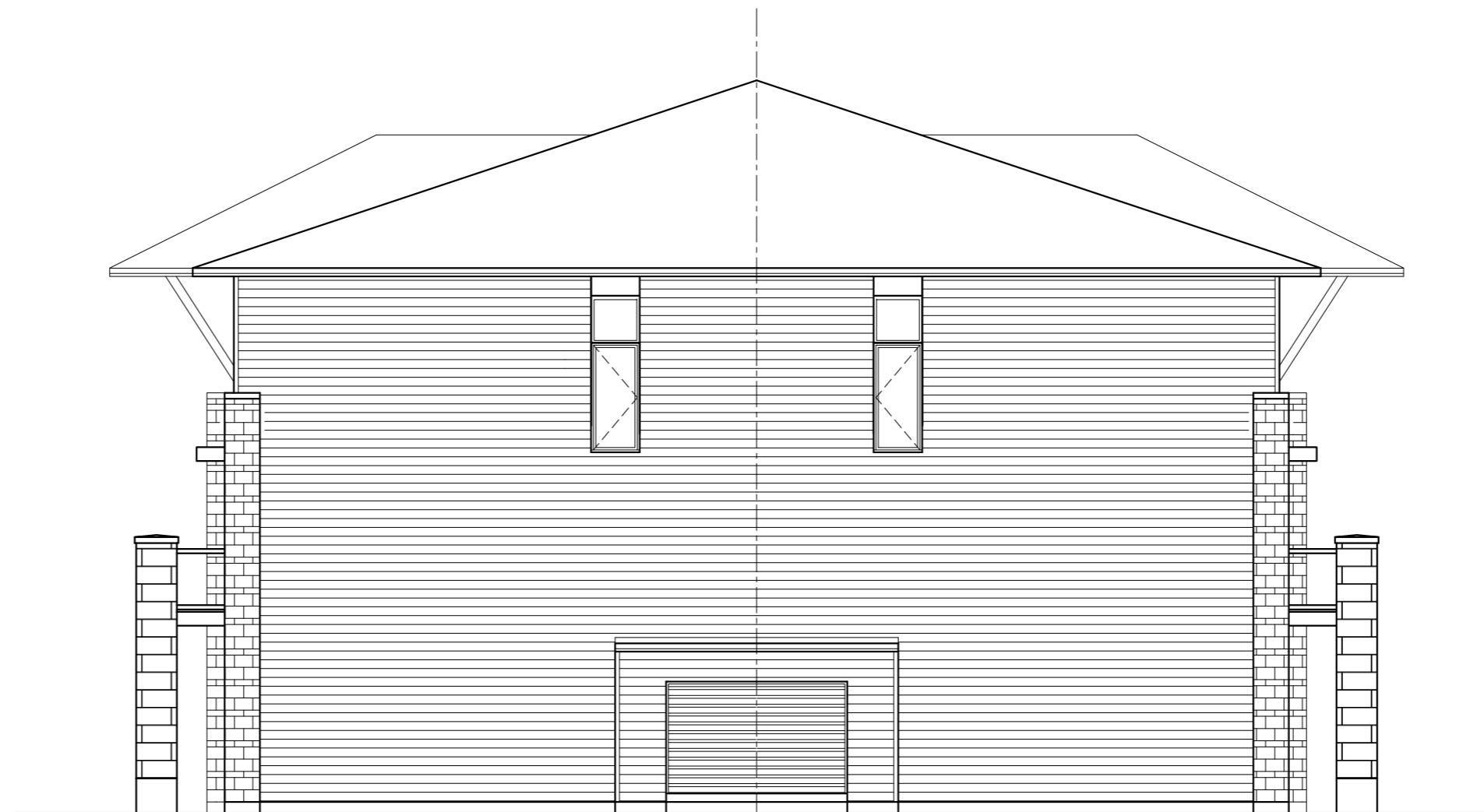


TAMARACK

DATE DRAWN:	JAN 10/19
DRAWN:	EK
CHECKED:	JH
SCALE:	1:100

CARDINAL CREEK
CARTOGRAPHE & STADACONE

UNITS 279-286
ELEVATION PLAN, E-STAR
BLK 103



SOUTH ELEVATION

UNIT #282
 TYPE 'B' END
 OPT 3RD FLR #1
 CIVIC# 615 CS

UNIT #283
 TYPE 'B' END REV
 OPT 3RD FLR #1
 CIVIC# 511 SR



WEST ELEVATION

UNIT #279
 TYPE 'B' END REV
 OPT 3RD FLR #1
 CIVIC# 609 CS

UNIT #280
 TYPE 'A'
 OPT 3RD FLR #1
 CIVIC# 611 CS

UNIT #281
 TYPE 'B' REV
 OPT 3RD FLR #1
 CIVIC# 613 CS

UNIT #282
 TYPE 'B' END
 OPT 3RD FLR #1
 CIVIC# 615 CS

TAMARACK

DATE DRAWN:	JAN 10/19
DRAWN:	EK
CHECKED:	JH
SCALE:	1:100

CARDINAL CREEK
CARTOGRAPHE & STADACONE

UNITS 279-286
 ELEVATION PLAN, E-STAR
 BLK 103