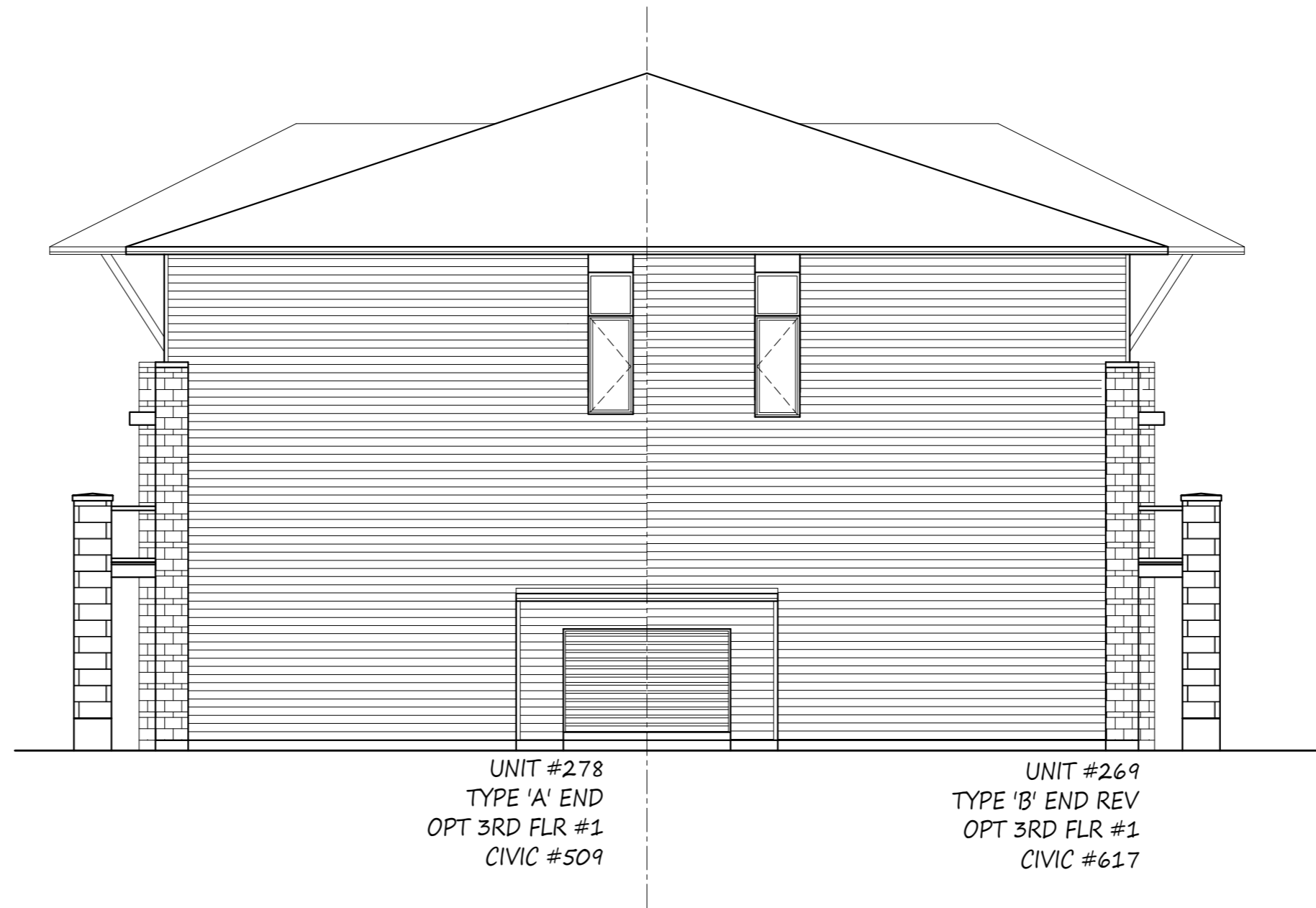


NORTH ELEVATION



UNIT #278
TYPE 'A' END
OPT 3RD FLR #1
CIVIC #509

UNIT #269
TYPE 'B' END REV
OPT 3RD FLR #1
CIVIC #617

EAST ELEVATION




UNIT #269
TYPE 'B' END REV
OPT 3RD FLR #1
CIVIC #617

UNIT #270
TYPE 'A'
OPT 3RD FLR #1
CIVIC #619

UNIT #271
TYPE 'B'
OPT 3RD FLR #1
CIVIC #621

UNIT #272
TYPE 'A' REV
OPT 3RD FLR #1
CIVIC #623

UNIT #273
TYPE 'C'
OPT 3RD FLR #1
CIVIC #625

**TAMARACK**

DATE DRAWN:	DATE
DRAWN:	AM
CHECKED:	JH
SCALE:	1:100

CARDINAL CREEK
- SPEC -

UNITS 269 - 278
ELEVATION PLAN, E-STAR
BLOCK 102



SOUTH ELEVATION

UNIT #273
TYPE 'C'
OPT 3RD FLR #1
CIVIC #625

UNIT #274
TYPE 'C' REV
OPT 3RD FLR #1
CIVIC #501



WEST ELEVATION


UNIT #274
TYPE 'C' REV
OPT 3RD FLR #1
CIVIC #501

UNIT #275
TYPE 'B'
OPT 3RD FLR #1
CIVIC #503

UNIT #276
TYPE 'A' REV
OPT 3RD FLR #1
CIVIC #505

UNIT #277
TYPE 'B' REV
CIVIC #507

UNIT #278
TYPE 'A' END
OPT 3RD FLR #1
CIVIC #509



DATE DRAWN: DATE
DRAWN: AM
CHECKED: JH
SCALE: 1:100

CARDINAL CREEK
- SPEC -

UNITS 269 - 278
ELEVATION PLAN, E-STAR
BLOCK 102