

NORTH ELEVATION

UNIT #316  
 TYPE 'B' END  
 OPT 3RD FLR #1  
 CIVIC# 790 CDW

UNIT #307  
 TYPE 'A' END REV  
 OPT 3RD FLR #1  
 CIVIC# 518 SR



EAST ELEVATION

UNIT #312  
 TYPE 'B' END REV  
 OPT 3RD FLR #1  
 CIVIC# 798 CDW

UNIT #313  
 TYPE 'B'  
 OPT 3RD FLR #1  
 CIVIC# 796 CDW

UNIT #314  
 TYPE 'B'  
 OPT 3RD FLR #1  
 CIVIC# 794 CDW

UNIT #315  
 TYPE 'A' REV  
 OPT 3RD FLR #1  
 CIVIC# 792 CDW

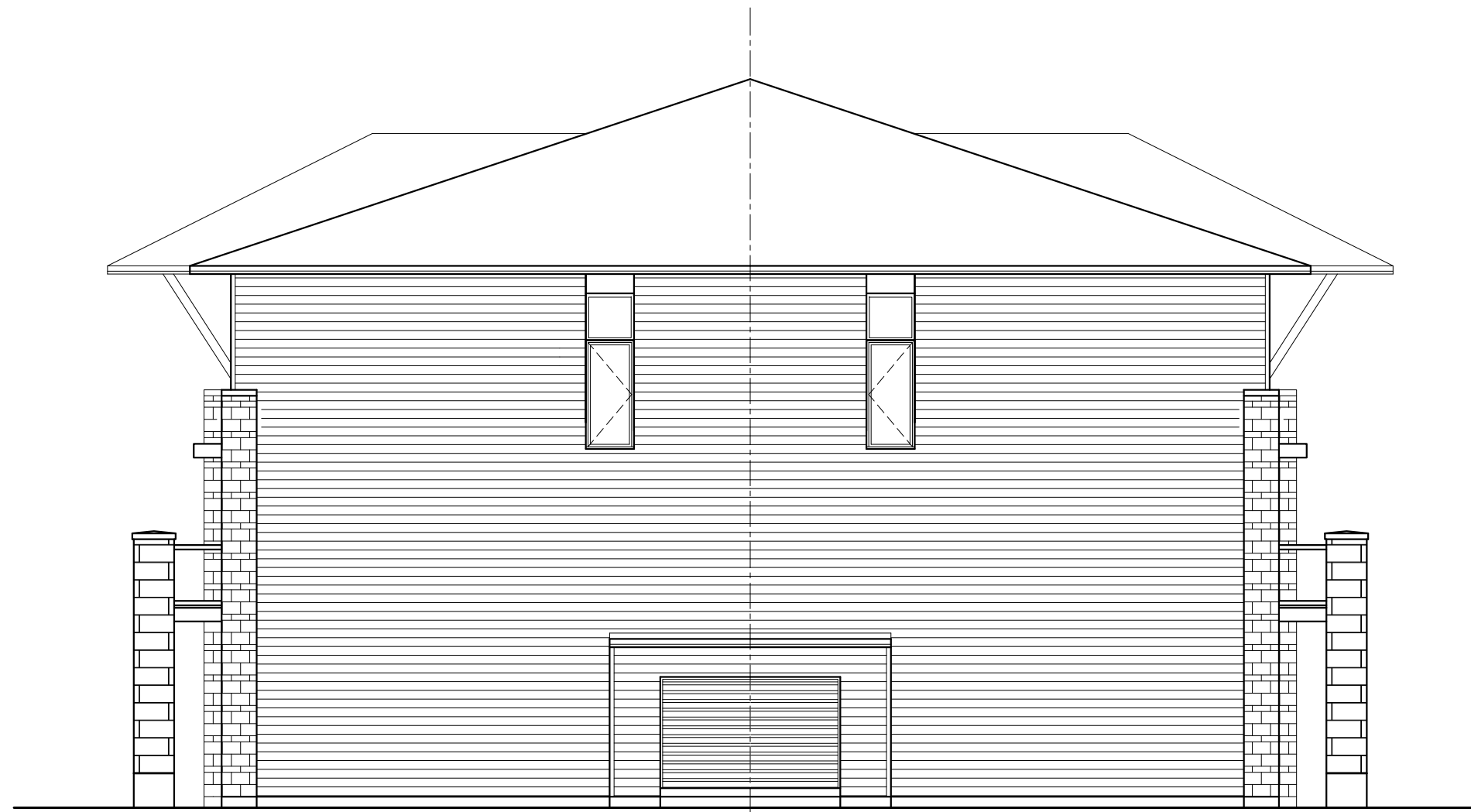
UNIT #316  
 TYPE 'B' END  
 OPT 3RD FLR #1  
 CIVIC# 790 CDW

**TAMARACK**

DATE DRAWN:	JAN 7/19
DRAWN:	EK
CHECKED:	JH
SCALE:	1:100

**CARDINAL CREEK**  
**STADACONE & CAP DIAMANT**

**UNITS 307-316**  
 ELEVATION PLAN, E-STAR  
 BLK 106



UNIT #311  
 TYPE 'B' END  
 OPT 3RD FLR #1  
 CIVIC# 510 SR

UNIT #312  
 TYPE 'B' END REV  
 OPT 3RD FLR #1  
 CIVIC# 798 CDW

SOUTH ELEVATION



UNIT #307  
 TYPE 'A' END REV  
 OPT 3RD FLR #1  
 CIVIC# 518 SR


UNIT #308  
 TYPE 'B'  
 OPT 3RD FLR #1  
 CIVIC# 516 SR

UNIT #309  
 TYPE 'B' REV  
 OPT 3RD FLR #1  
 CIVIC# 514 SR

UNIT #310  
 TYPE 'A' REV  
 CIVIC# 512 SR

UNIT #311  
 TYPE 'B' END  
 OPT 3RD FLR #1  
 CIVIC# 510 SR

WEST ELEVATION

 <b>TAMARACK</b>	DATE DRAWN: JAN 7/19
	DRAWN: EK
	CHECKED: JH
	SCALE: 1:100

**CARDINAL CREEK**  
**STADACONE & CAP DIAMANT**

**UNITS 307-316**  
 ELEVATION PLAN, E-STAR  
 BLK 106