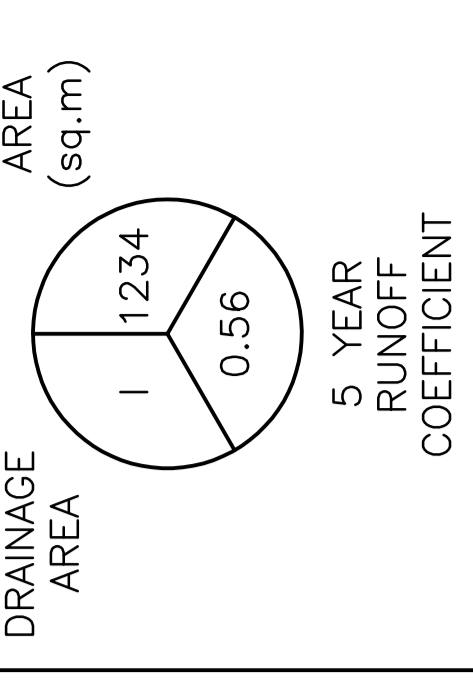
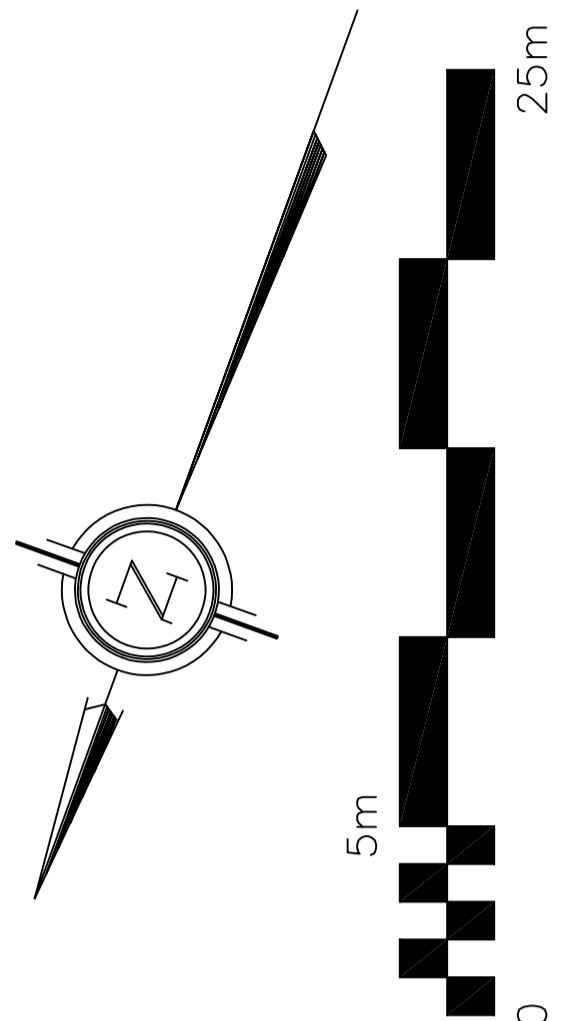


No.	DATE	REVISION
1	JAN 11-22	ISSUED FOR COORDINATION
2	JAN 12-22	ISSUED FOR APPROVAL
3	JUL 28-22	RE-ISSUED FOR APPROVAL
4	JAN 25-23	RE-ISSUED FOR APPROVAL

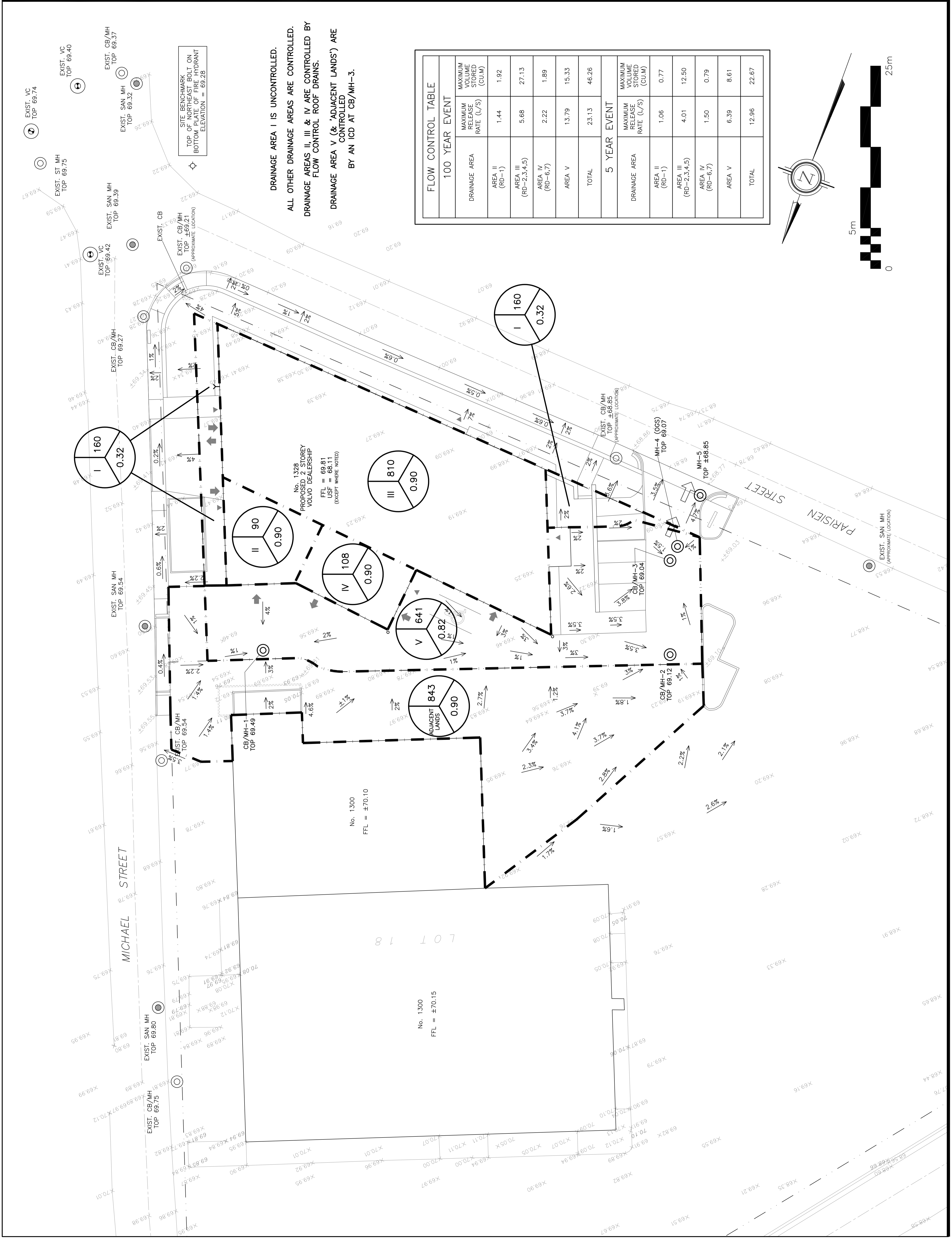


100 YEAR EVENT		
DRAINAGE AREA	MAXIMUM RELEASE RATE (L/S)	MAXIMUM VOLUME STORED (CU.M)
AREA II (RD-1)	1.44	1.92
AREA III (RD-2,3,4,5)	5.68	27.13
AREA IV (RD-6,7)	2.22	1.89
AREA V	13.79	15.33
TOTAL	23.13	46.26
5 YEAR EVENT		
DRAINAGE AREA	MAXIMUM RELEASE RATE (L/S)	MAXIMUM VOLUME STORED (CU.M)
AREA II (RD-1)	1.06	0.77
AREA III (RD-2,3,4,5)	4.01	12.50
AREA IV (RD-6,7)	1.50	0.79
AREA V	6.39	8.61
TOTAL	12.96	22.67



DRAINAGE AREA I IS UNCONTROLLED.
ALL OTHER DRAINAGE AREAS ARE CONTROLLED.
DRAINAGE AREAS II, III & IV ARE CONTROLLED BY FLOW CONTROL ROOF DRAINS.
DRAINAGE AREA V (& 'ADJACENT LANDS') ARE CONTROLLED BY AN ICD AT CB/MH-3.

SITE BENCHMARK
 TOP OF NORTHEAST BOLT ON
 BOTTOM PLATE OF FIRE HYDRANT
 ELEVATION = 69.28



EXIST. VC TOP 69.74
 EXIST. ST. MH TOP 69.75
 EXIST. VC TOP 69.40
 EXIST. CB/MH TOP 69.37
 EXIST. SAN MH TOP 69.32
 EXIST. SAN MH TOP 69.39
 EXIST. VC TOP 69.42
 EXIST. CB TOP 69.21
 EXIST. CB/MH TOP 69.27
 EXIST. VC TOP 69.28
 EXIST. SAN MH TOP 69.54
 EXIST. SAN MH TOP 69.80
 EXIST. CB/MH TOP 69.75
 EXIST. CB/MH TOP 69.49
 EXIST. CB/MH TOP 69.04
 EXIST. CB/MH TOP 68.85
 EXIST. SAN MH (APPROXIMATE LOCATION)
 EXIST. SAN MH (APPROXIMATE LOCATION)

No. 1300
 FFL = ±70.10
 No. 1300
 FFL = ±70.15
 No. 1328
 PROPOSED 2 STOREY
 VOLVO DEALERSHIP
 FFL = 69.81
 USF = 68.11
 (EXCEPT WHERE NOTED)

ADJACENT LANDS
 843
 0.90

ADJACENT LANDS
 641
 0.82

ADJACENT LANDS
 108
 0.90

ADJACENT LANDS
 90
 0.90

ADJACENT LANDS
 810
 0.90

ADJACENT LANDS
 160
 0.32

ADJACENT LANDS
 160
 0.32

ADJACENT LANDS
 160
 0.32