

INSULATE SEWER AS INDICATED AND WHERE DEPTH OF COVER IS LESS THAN 2000mm. CENTER INSULATION OVER PIPE. JOINTS BETWEEN SHEETS OF INSULATION SHALL BE STAGGERED.

INSULATION OF STORM SEWERS & SERVICE CONNECTIONS IN SHALLOW TRENCHES
N.T.S

WATER SERVICE PROFILE TABLE					
MATERIAL: 150mm PVC PRESSURE CLASS 150 DR18					
STATION	DESCRIPTION	GRADE ELEVATION	TOP OF PIPE	DEPTH OF COVER	NOTES
0+00.0	150mm x 150mm TEE CONNECTION IN 150mm MUNICIPAL WATERMAIN TO CITY OF OTTAWA STANDARDS	±69.10	±66.45	±2.65	-
0+05.4	11.25' VERTICAL BEND UP TO CITY OF OTTAWA STANDARDS	±69.20	66.45	±2.75	-
0+06.9	11.25' VERTICAL BEND DOWN TO CITY OF OTTAWA STANDARDS	69.35	66.75	2.60	-
0+07.9	-	69.38	66.75	2.63	CROSSING 300 SANI TOP ±66.35 WM U/S 66.60 - 250mm REQ'D CLEARANCE (MIN. 250mm REQ'D)
0+08.0	-	69.38	66.75	2.63	CROSSING 450 ST INV ±67.55 WM TOP 66.75 - 800mm CLEARANCE (MIN. 500mm REQ'D)
0+08.4	-	69.39	66.75	2.64	BACK OF SIDEWALK
0+11.7	150mm VALVE & VALVE BOX TO CITY OF OTTAWA STANDARDS	69.56	66.75	2.81	-
0+12.7	-	69.61	66.75	2.86	ENTRY INTO BUILDING

WATER SERVICE PROFILE TABLE

MATERIAL: 150mm PVC PRESSURE CLASS 150 DR18

CATCH-BASIN & MANHOLE SCHEDULE						
REF	TOP	SIZE	TYPE	INVERT AT INLET	INVERT AT OUTLET	NOTES
STORM SEWER						
CB/MH-1	69.49	1200mm	PRE-CAST CONCRETE CATCH-BASIN/MANHOLE	-	67.52	TO OPSD 701.010 & CITY OF OTTAWA STANDARDS - FRAME & COVER TO DRAWING NO. S25 & S28.1
CB/MH-2	69.12	1200mm	PRE-CAST CONCRETE CATCH-BASIN/MANHOLE	67.42(E)	67.42(S)	TO OPSD 701.010 & CITY OF OTTAWA STANDARDS - FRAME & COVER TO DRAWING NO. S25 & S28.1
CB/MH-3	69.04	1200mm	PRE-CAST CONCRETE CATCH-BASIN/MANHOLE	67.40(N)	67.40(S)	TO OPSD 701.010 & CITY OF OTTAWA STANDARDS - FRAME & COVER TO DRAWING NO. S25 & S28.1 INSTALL GCI IN OUTLET PIPE
MH-4	69.07	CDS PMSU2015-4	PRE-CAST CONCRETE MANHOLE	67.39(N)	67.38(S)	TO OPSD 701.010 & CITY OF OTTAWA STANDARDS EXCEPT WITH A DEEP SUMP AS REQUIRED BY CDS INSTALL WATERTIGHT COVER
MH-5	±68.85	1200mm	PRE-CAST CONCRETE MANHOLE	67.36(N) ±67.31(E)	±67.30(W)	TO OPSD 701.010 & CITY OF OTTAWA STANDARDS EXCEPT WITH A DEEP SUMP AS REQUIRED BY CDS INSTALL WATERTIGHT COVER

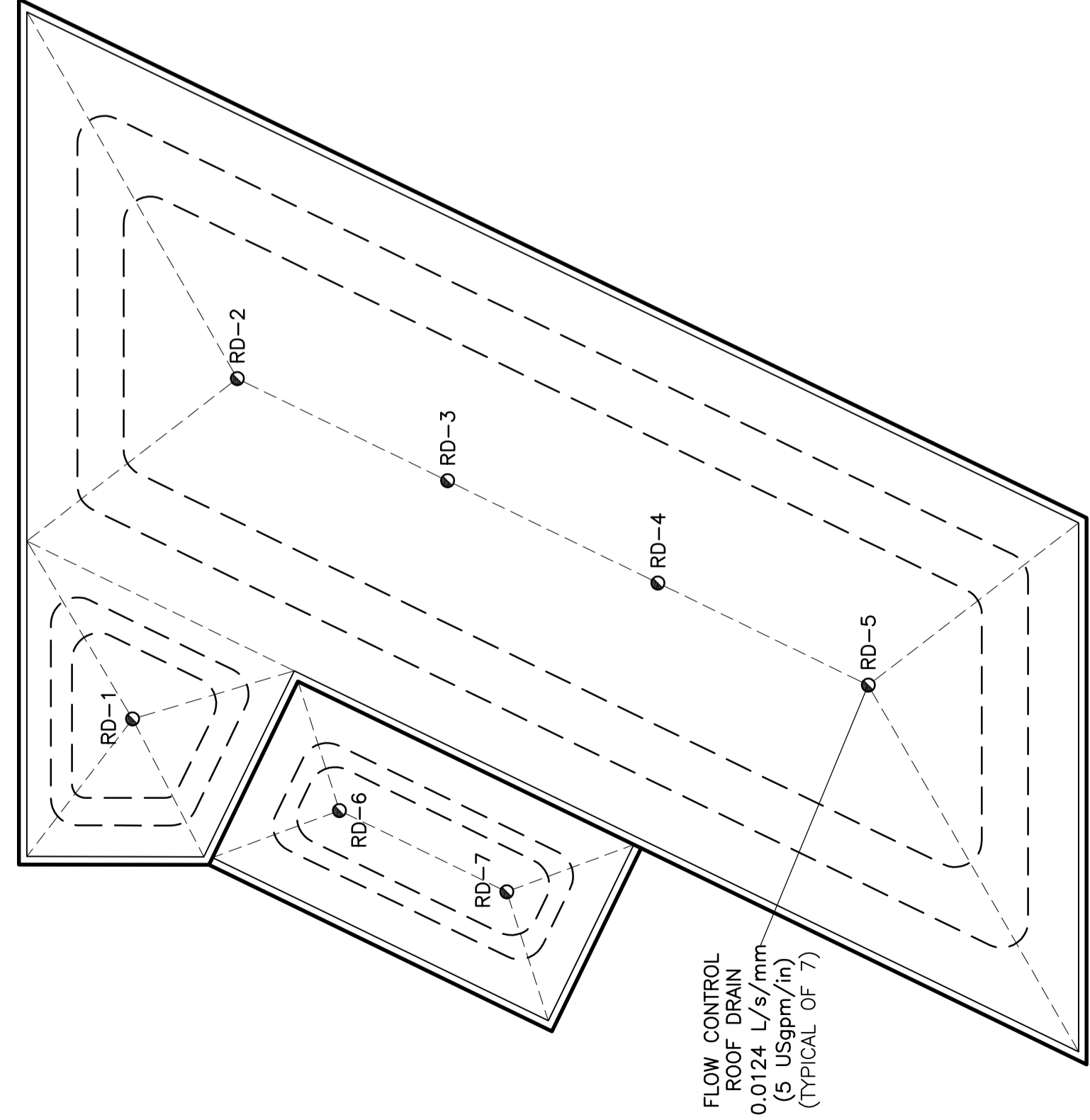
CATCH-BASIN & MANHOLE SCHEDULE

STORM SEWER

ROOF DRAINAGE PLAN				
PONDING DEPTHS AT ROOF DRAINS	100-YEAR	5-YEAR		
RD-1	116mm	86mm		
RD-2,3,4,5	114mm	81mm		
RD-6,7	89mm	61mm		

UPPER ROOF: INSTALL A MINIMUM OF 9 SCUPPERS, EACH A MINIMUM 300mm WIDE. BOTTOM OF SCUPPERS SHALL BE 150mm ABOVE ROOF DRAINS (REFER TO ARCHITECTURAL FOR EXACT LOCATIONS AND DETAILS). ROOF SHALL BE DESIGNED TO CARRY THE LOAD OF WATER HAVING A 50mm DEPTH AT SCUPPER OR 200mm DEPTH AT ROOF DRAIN (REFER TO STRUCTURAL).

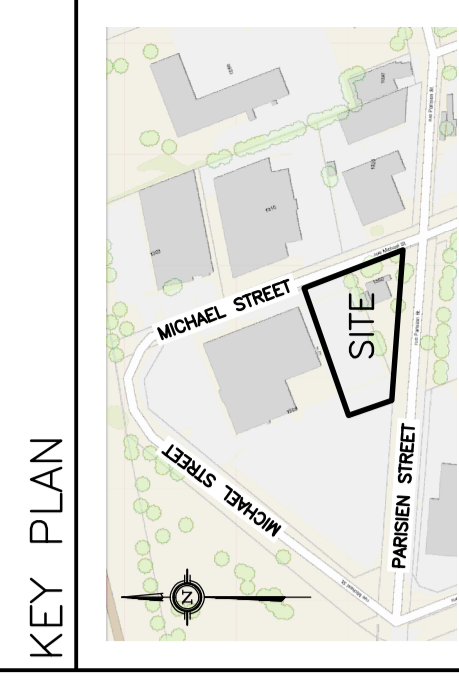
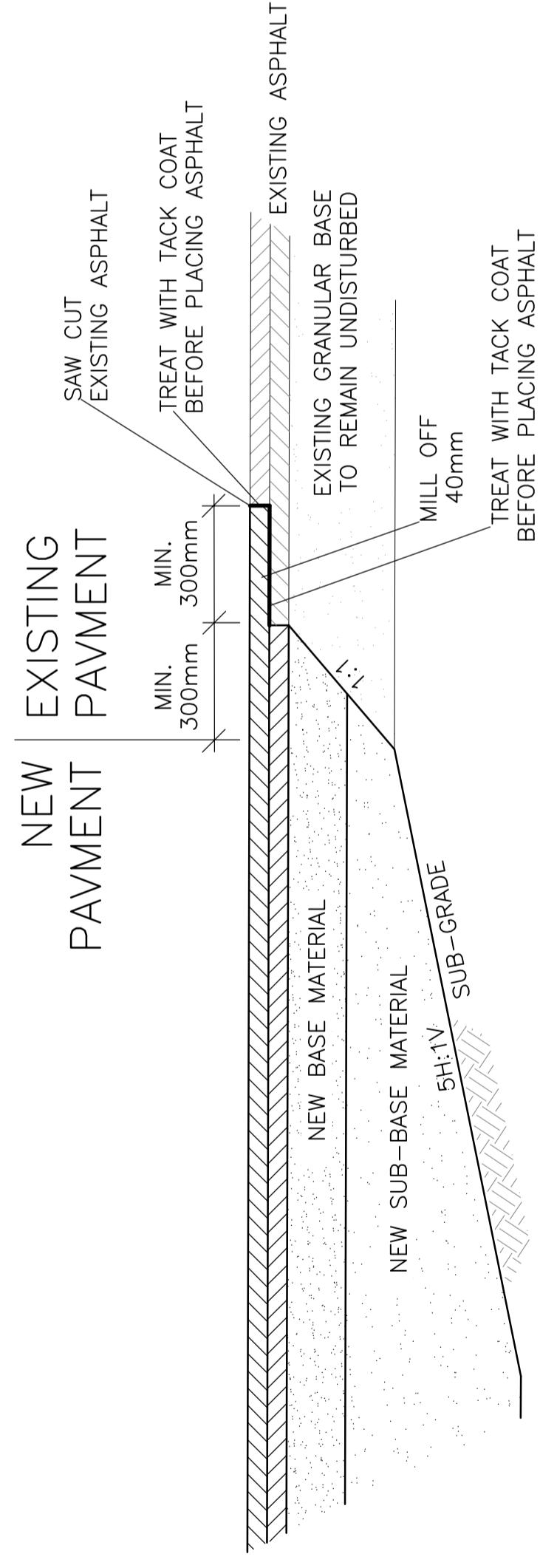
LOWER ROOF: INSTALL A MINIMUM OF 2 SCUPPERS, EACH A MINIMUM 300mm WIDE. BOTTOM OF SCUPPERS SHALL BE 150mm ABOVE ROOF DRAINS (REFER TO ARCHITECTURAL FOR EXACT LOCATIONS AND DETAILS). ROOF SHALL BE DESIGNED TO CARRY THE LOAD OF WATER HAVING A 50mm DEPTH AT SCUPPER OR 200mm DEPTH AT ROOF DRAIN (REFER TO STRUCTURAL).



ROOF DRAINAGE PLAN

PAVEMENT TRANSITIONS

N.T.S.



KEY PLAN

No.	DATE	REVISION
4	JAN 25-23	RE-ISSUED FOR APPROVAL
3	JUL 28-22	RE-ISSUED FOR APPROVAL
2	JAN 12-22	ISSUED FOR APPROVAL
1	JAN 11-22	ISSUED FOR COORDINATION

D. B. GRAY ENGINEERING INC.
Professional Management - Consulting & Engineering - Survey & Quantity Services - Estimating
 700 Long Point Circle
 Ottawa, Ontario K1J 1G7
 613-425-8044
 d.gray@dbgrayengineering.com

Project
PROPOSED 2 STOREY VOLVO DEALERSHIP
1328 MICHAEL STREET
 OTTAWA, ONTARIO

Drawing Title
DETAILS & SCHEDULES

Engineer's Seal
 PROFESSIONAL ENGINEER
 O.B. GRAY
 17016502
 JAN 25-23
 BOARD OF ENGINEERS
 OF ONTARIO

Drawn
 H. Scale
 V. Scale
 Date NOV 2-21
 Job No. 21012
 Drawing No. **C-5**
 of **8**
 NOT VALID UNLESS SIGNED & DATED