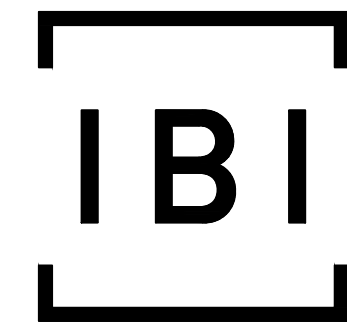
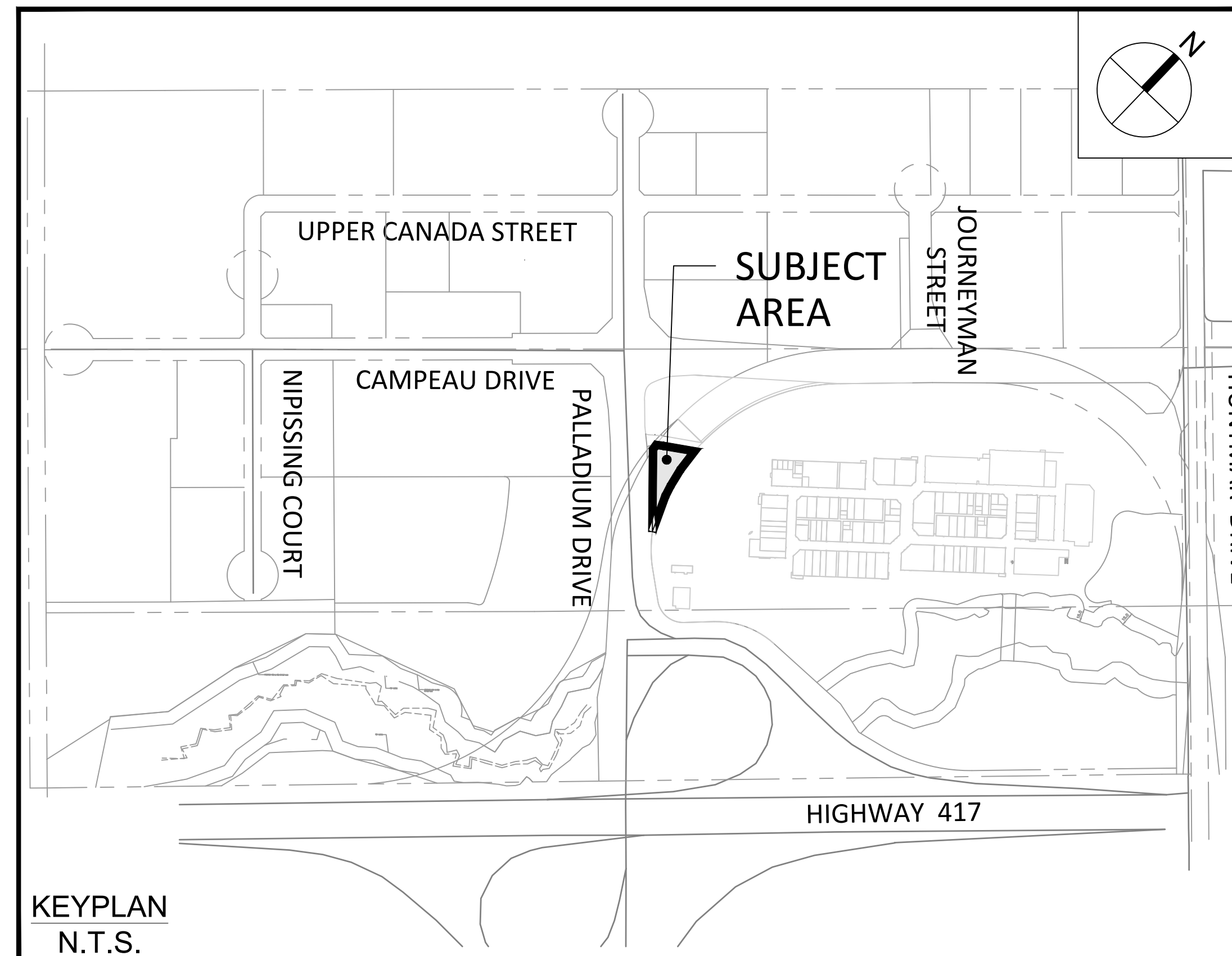


BUILDING 17 CHICK-FIL-A RIOCAN REIT



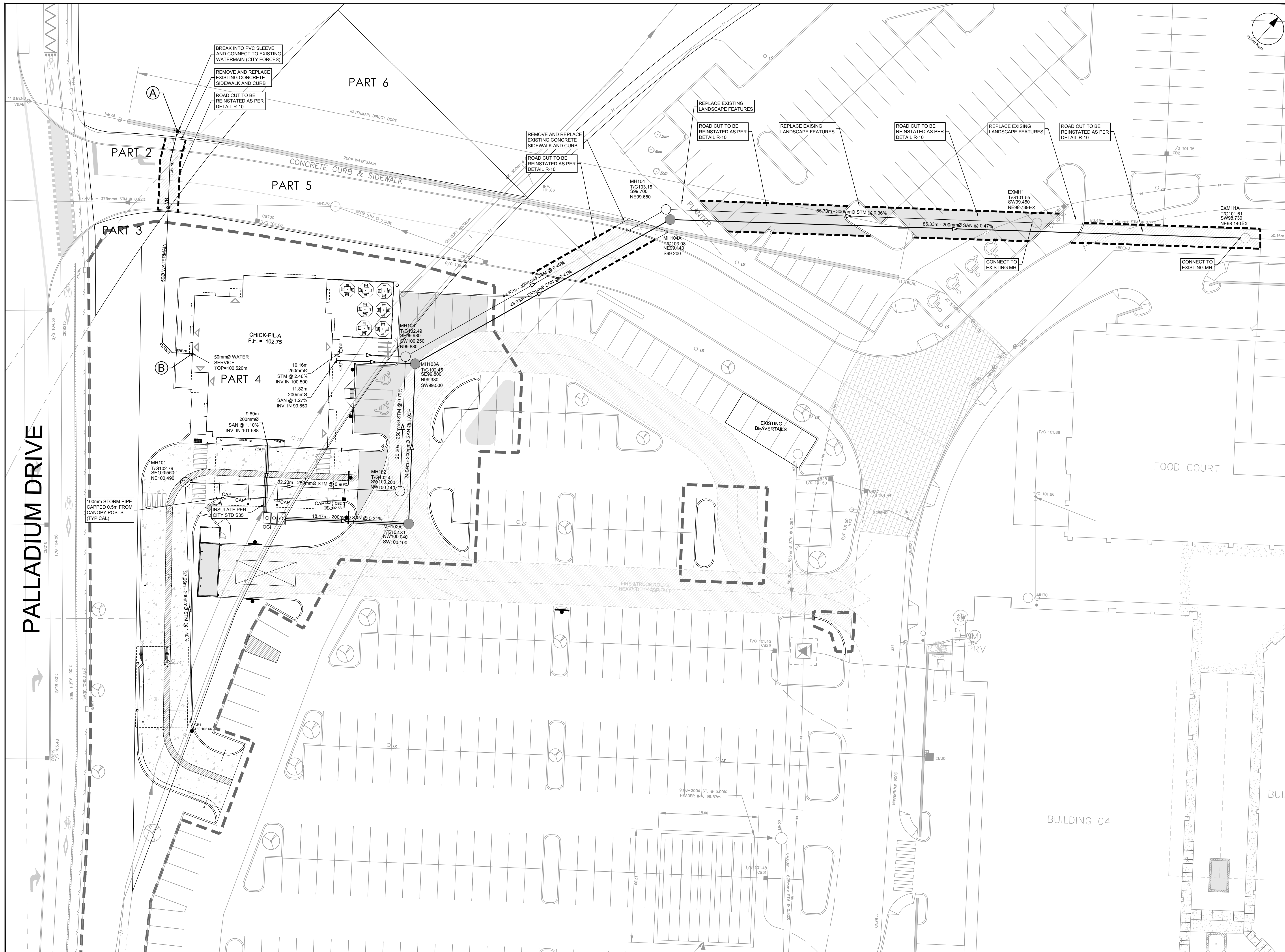
IBI GROUP
400 – 333 Preston Street
Ottawa ON K1S 5N4 Canada
tel 613 225 1311 fax 613 225 9868
ibigroup.com



Sheet List Table	
Sheet Number	Sheet Title
C-000	Cover
C-001	SITE SERVICING PLAN
C-010	GENERAL NOTES LEGEND AND CB DATA TABLE
C-200	SITE GRADING PLAN
C-500	STORM DRAINAGE AREA PLAN
C-900	EROSION AND SEDIMENTATION CONTROL PLAN

333 HUNTMAR DRIVE CITY OF OTTAWA

CONTRACT NO. 141991



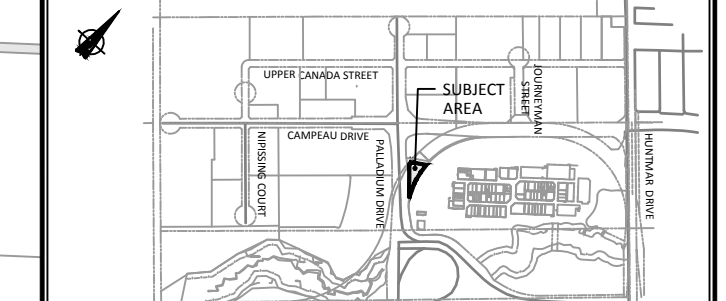
CLIENT
RIOCAN REIT

 RIOCAN YONGE EGLINTON CENTER, 2300
 YONGE ST, SUITE 500

COPYRIGHT
 This drawing has been prepared solely for the intended use. Any reproduction or distribution for any purpose other than that authorized by IBI Group is forbidden. Written dimensions shall have precedence over scaled dimensions. Contractors shall verify and be responsible for all dimensions and conditions on the job, and IBI Group shall be informed of any variations from the dimensions and conditions shown on the drawing. Shop drawings shall be submitted to IBI Group for general confirmation before proceeding with fabrication.
 IBI Group Professional Services (Canada) Inc.
 is a member of the IBI Group of companies

ISSUES	No.	DESCRIPTION	DATE
	1	ISSUED FOR COORDINATION	2023-03-15
	2	ISSUED FOR SPA	2023-03-15
	3		
	4		
	5		
	6		
	7		
	8		
	9		
	10		

SEE 0, 011, 012 FOR NOTES, LEGEND, CB TABLE, SHEET SECTIONS AND DETAILS



CONSULTANTS

SEAL

LICENSED PROFESSIONAL ENGINEER
 S. E. LABADIE
 100214983
 2023/03/15
 PROVINCE OF ONTARIO

PROJECT
**BUILDING 17
 CHICK-FIL-A**
 333 HUNTMAR DRIVE

PROJECT NO:
 141991

DRAWN BY:
 D.P.S. / S.P.G.

PROJECT MGR:
 S.E.L.

CHECKED BY:
 J.I.M.

APPROVED BY:
 S.E.L.

SHEET TITLE
SITE SERVICING PLAN

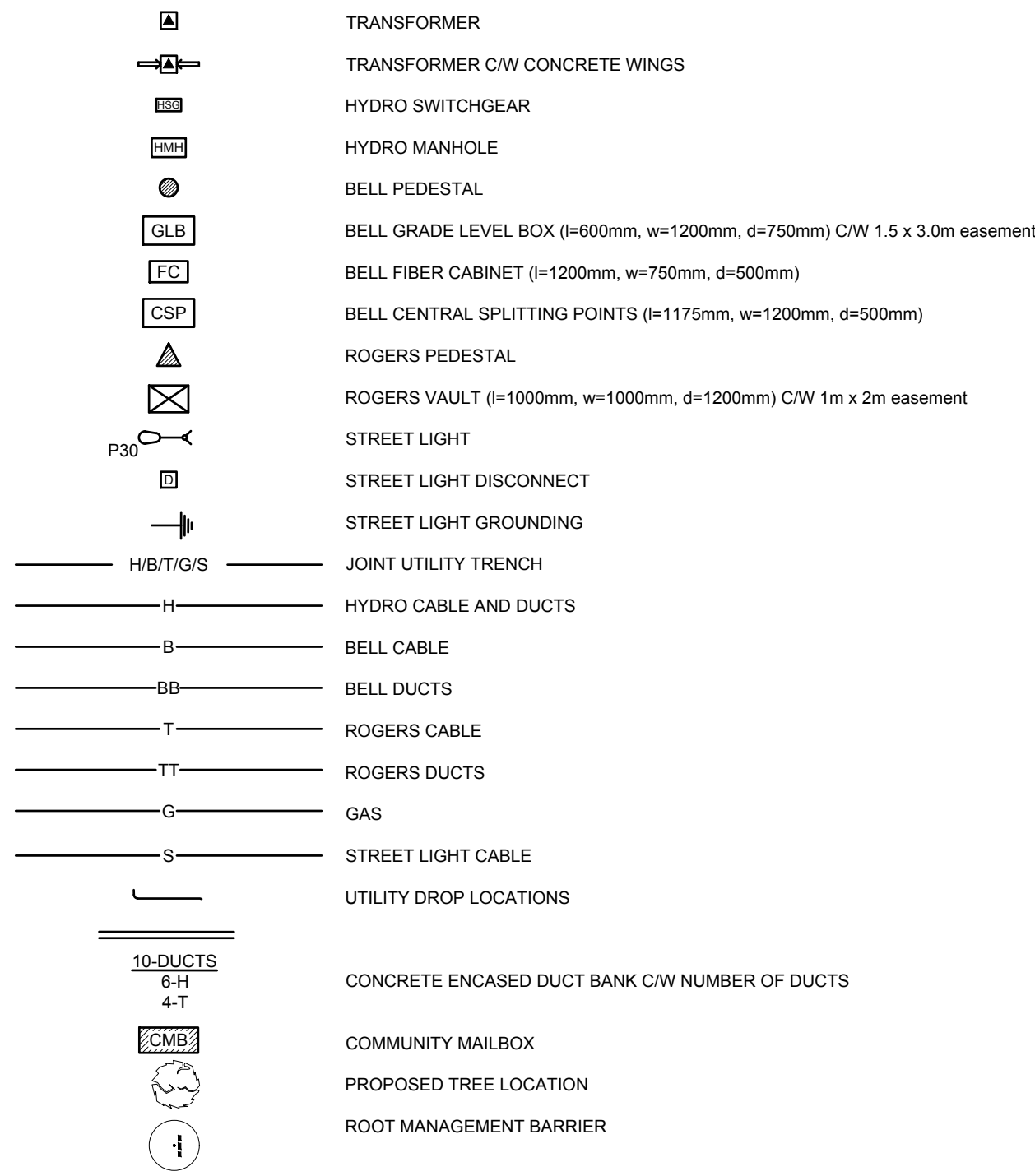
SHEET NUMBER
C-001

ISSUE
2

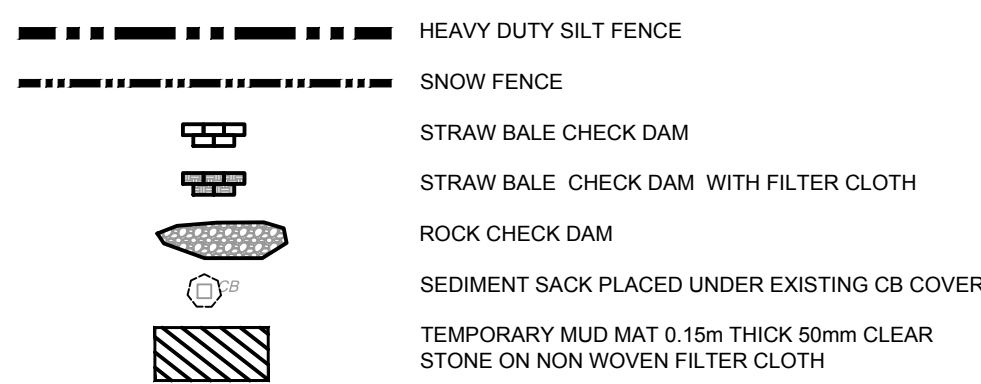
PALLADIUM DRIVE

CITY FILE No. D07-XX-XX-XXXX
 SCALE CHECK
 File Location: \\141991_Civil\Shared\C-001-SITE SERVICING PLAN.dwg Last Saved: March 15, 2023, 12:22:11 PM by Don Shima

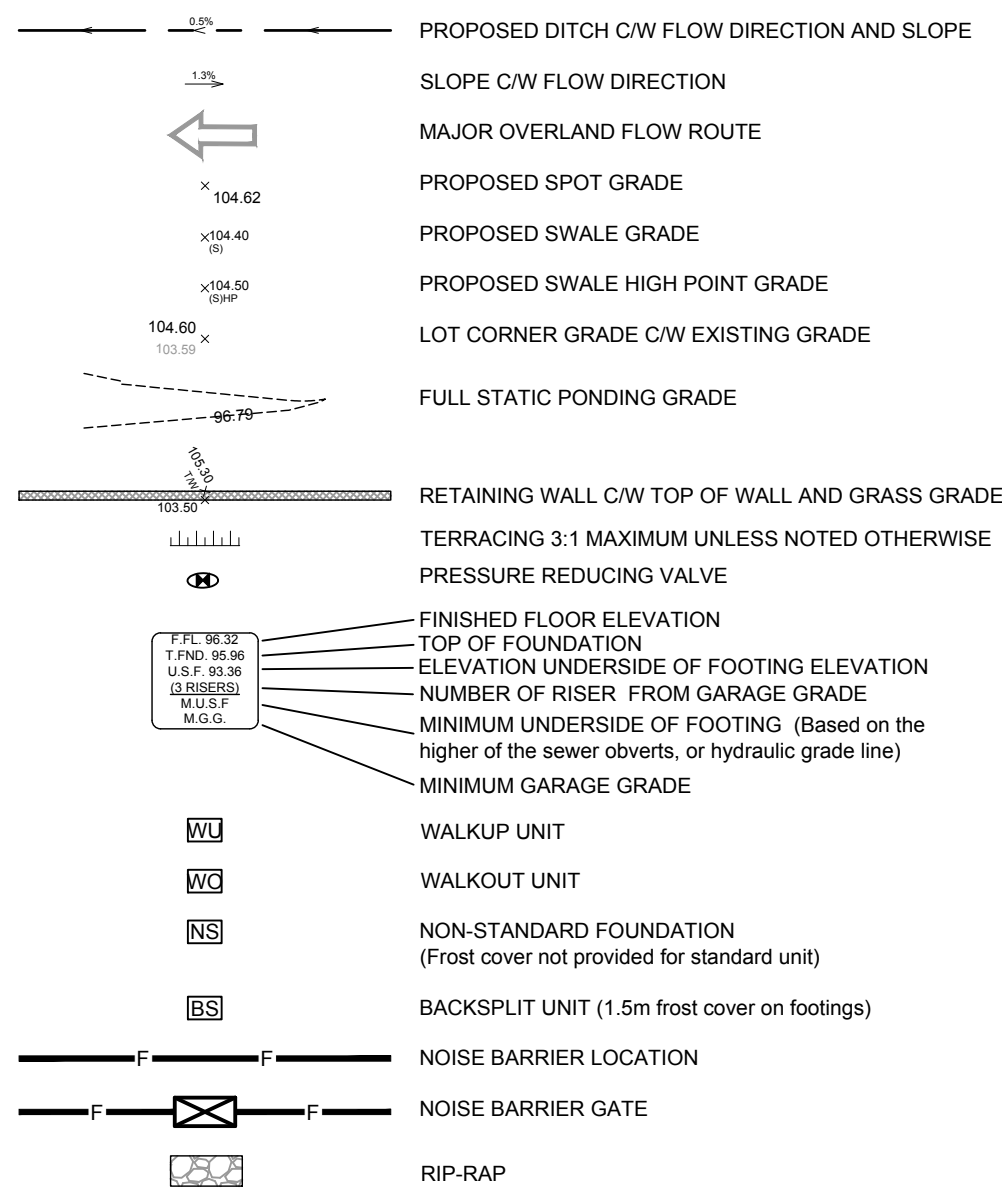
UTILITY LEGEND



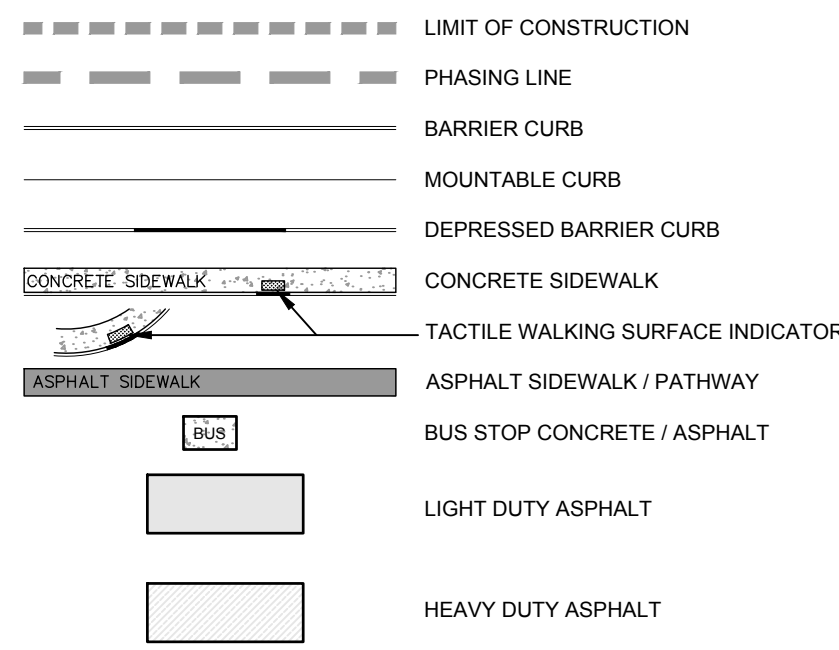
SEDIMENT EROSION LEGEND



GRADING LEGEND



GENERAL LEGEND



SERVICING LEGEND

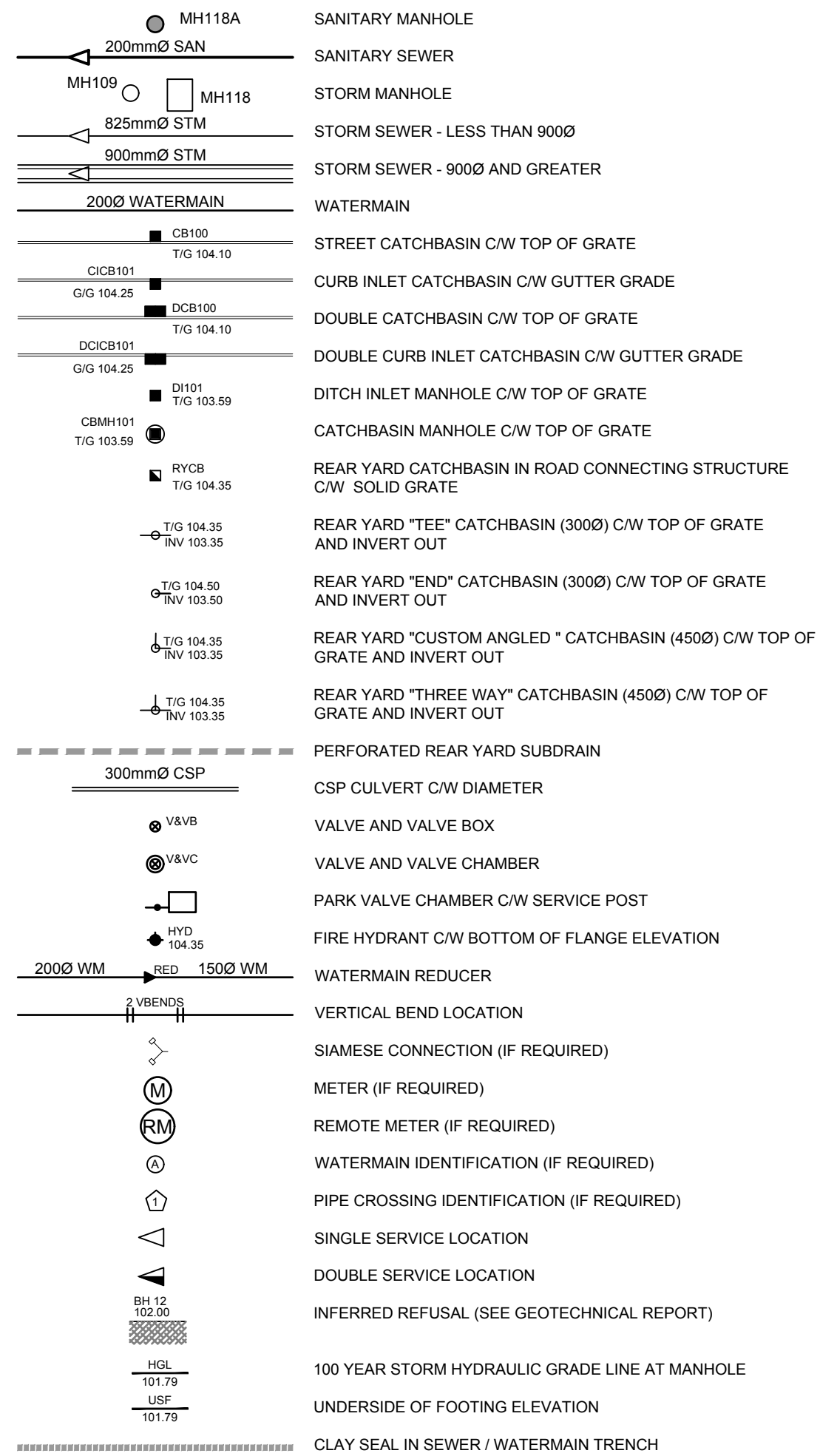


Table with columns: Station, Description, Finished Grade, Top of Watermain, Watermain Cover, As Built Watermain. Includes entries for connecting to existing sewer, bends, and service connections.

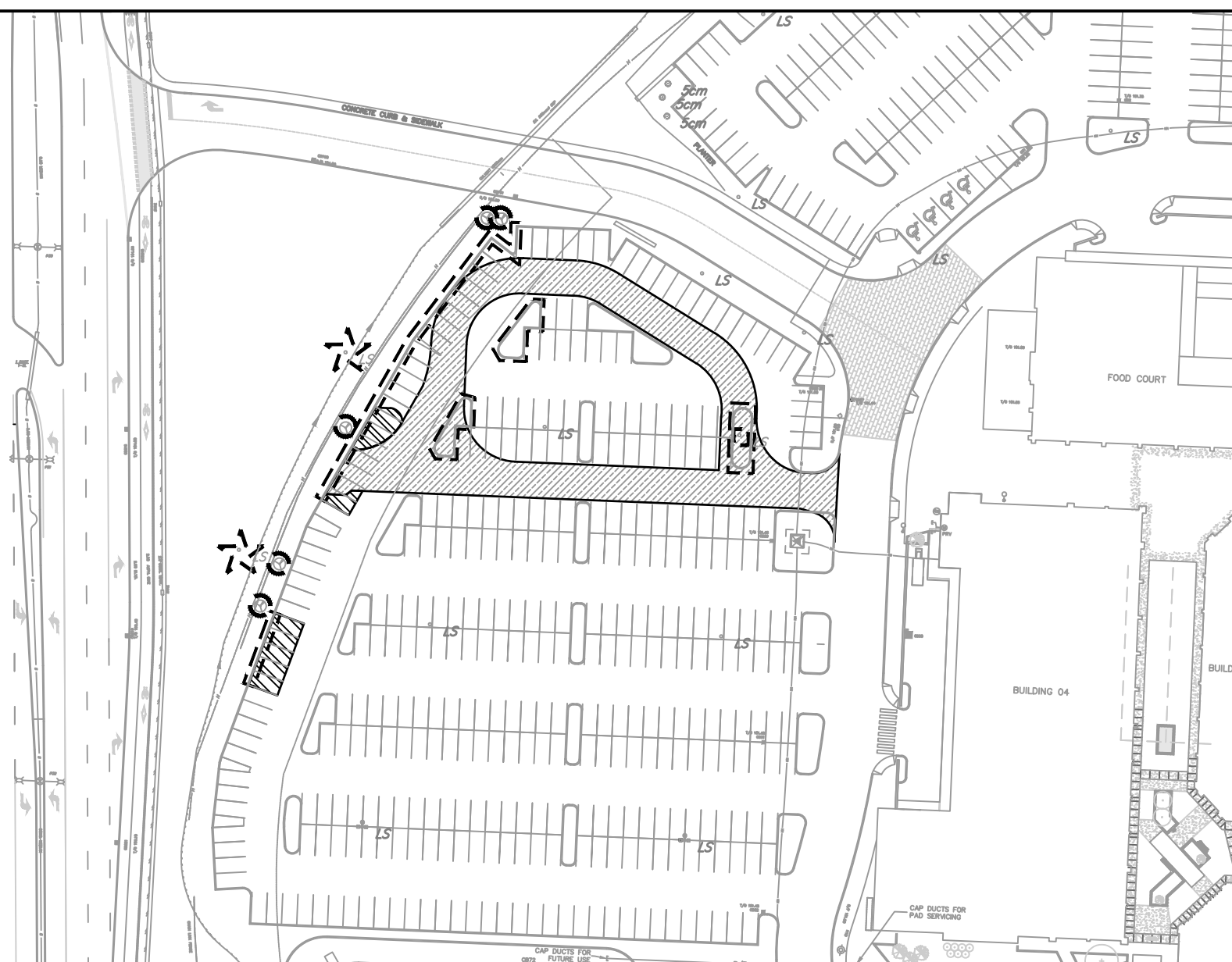
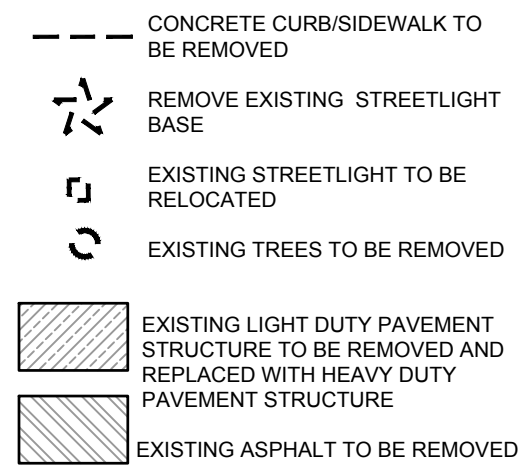
NOTES :

- 1. ALL MATERIALS AND CONSTRUCTION IS TO BE IN ACCORDANCE WITH THE CURRENT CITY OF OTTAWA STANDARD DRAWINGS & SPECIFICATIONS OR OPSS/OPSS IF CITY DRAWINGS AND SPECIFICATIONS DO NOT APPLY.
2. THE POSITION OF UNDERGROUND AND ABOVE-GROUND SERVICE, UTILITIES AND STRUCTURES ARE NOT NECESSARILY SHOWN ON THE CONTRACT DRAWINGS, AND WHERE SHOWN, THE ACCURACY OF THE POSITION OF SUCH SERVICE, UTILITIES AND STRUCTURES IS NOT GUARANTEED.
3. THE CONTRACTOR SHALL REPORT ALL CONFLICTS, DISCOVERIES OF ERROR AND DISCREPANCIES TO THE ENGINEER.

PAVEMENT STRUCTURE:

- LIGHT DUTY: 40mm SUPERPAVE 12.5-FC2 ASPHALTIC CONCRETE, 150mm OPSS GRANULAR 'A' CRUSHED STONE, 400mm OPSS GRANULAR 'B' TYPE II CRUSHED STONE.
SUBGRADE - EITHER FILL, INSITU SILTY CLAY OR SAND/CRUSHED STONE MATERIAL PLACED OVER IN SITU SOIL.
HEAVY DUTY: 40mm SUPERPAVE 12.5-FC2 ASPHALTIC CONCRETE, 50mm SUPERPAVE 19.0 ASPHALTIC CONCRETE, 150mm OPSS GRANULAR 'A' CRUSHED STONE, 450mm OPSS GRANULAR 'B' TYPE II CRUSHED STONE.

REMOVALS LEGEND:



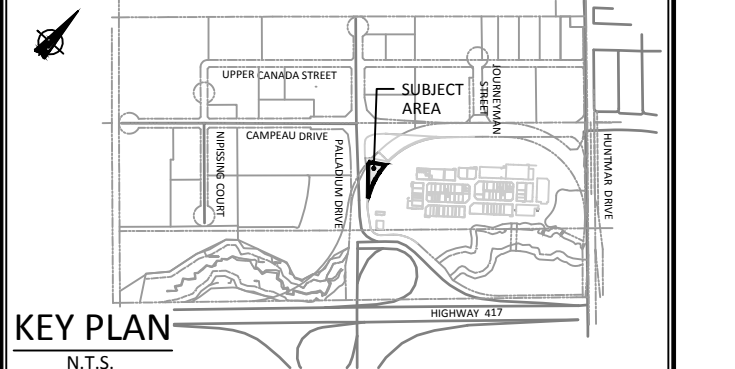
REMOVALS DETAIL N.T.S.

CLIENT: RIOCAN REIT. RIOCAN YONGE EGLINTON CENTER, 2300 YONGE ST, SUITE 500.

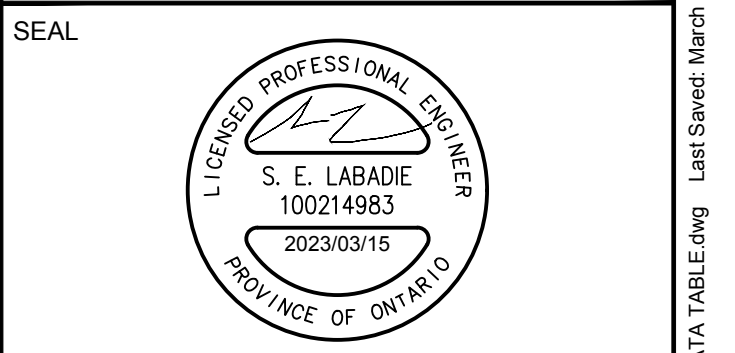
COPYRIGHT: This drawing has been prepared solely for the intended use... IBI Group Professional Services (Canada) Inc.

ISSUES table with columns: No., DESCRIPTION, DATE. Includes entries for coordination and SPA issues.

SEE 010, 011, 012 FOR NOTES, LEGEND, CB TABLE, STREET SECTIONS AND DETAILS.



CONSULTANTS



IBI GROUP logo and contact information: 400 - 333 Preston Street, Ottawa ON K1S 5M4 Canada.

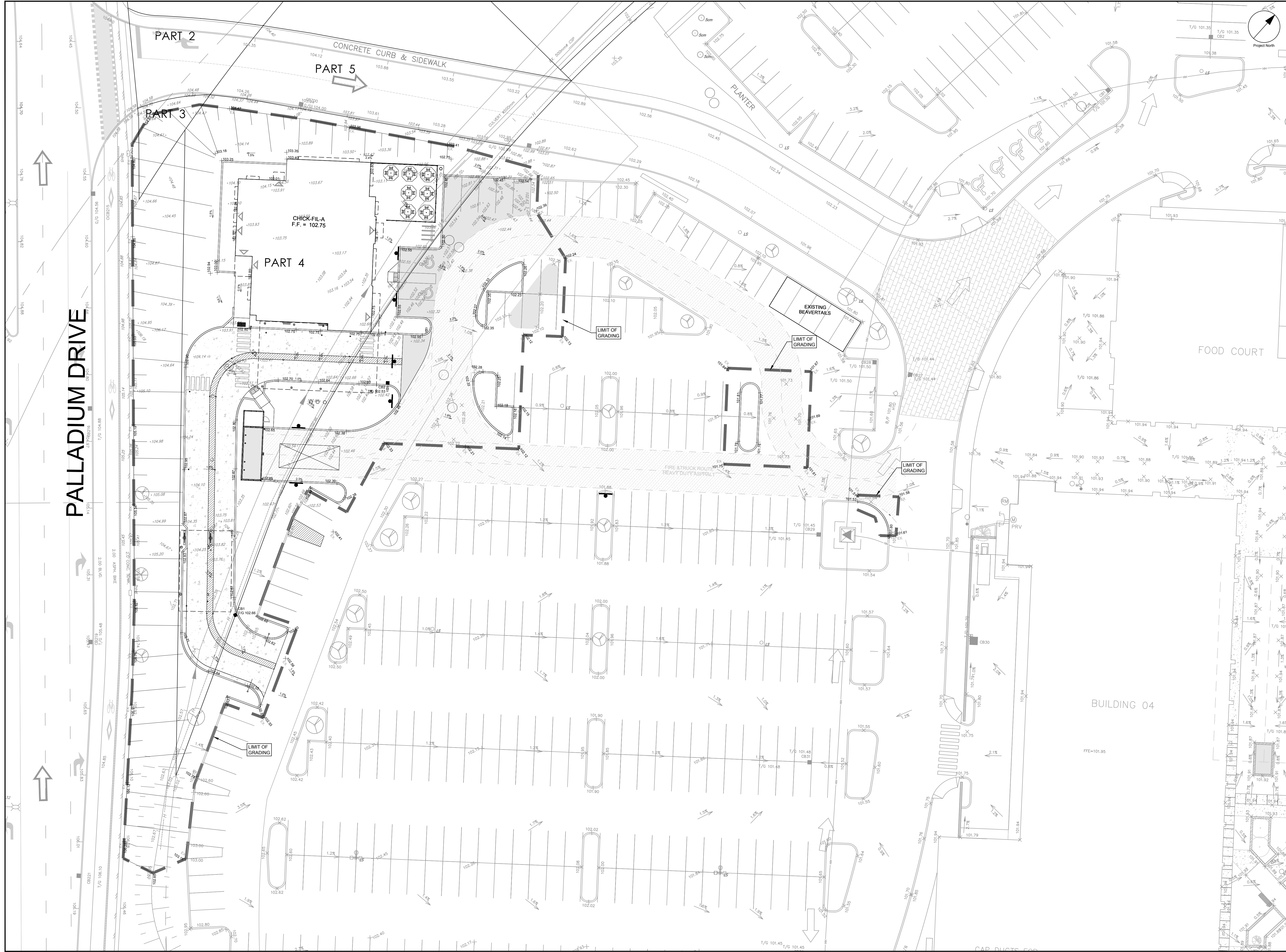
PROJECT: CHICK-FIL-A, 333 HUNTMAR DRIVE. PROJECT NO: 141991. DRAWN BY: D.P.S. / S.P.G. CHECKED BY: J.I.M.

SHEET TITLE: GENERAL NOTES LEGEND AND CB DATA TABLE.

SHEET NUMBER: C-010. ISSUE: 2.

CITY PLAN No. xxxxx

CITY FILE No. D07-xx-xx-xxxx. File Location: \\141991_Civil\IBI\Civil\Drawings\010-GENERAL NOTES LEGEND AND CB DATA TABLE.dwg. Last Saved: March 15, 2023, 12:22:23 PM by Don Shuma.



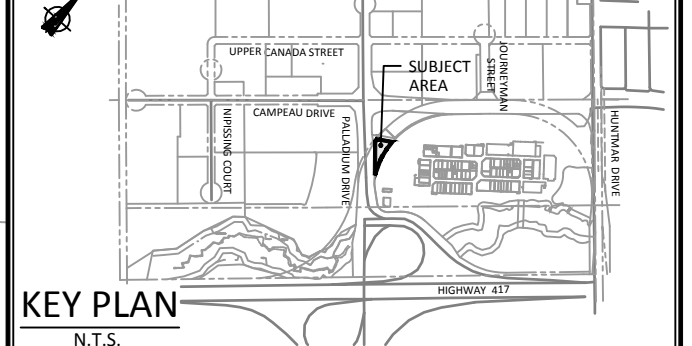
PALLADIUM DRIVE

CLIENT
RIOCAN REIT
 RIOCAN YONGE EGLINTON CENTER, 2300
 YONGE ST, SUITE 500

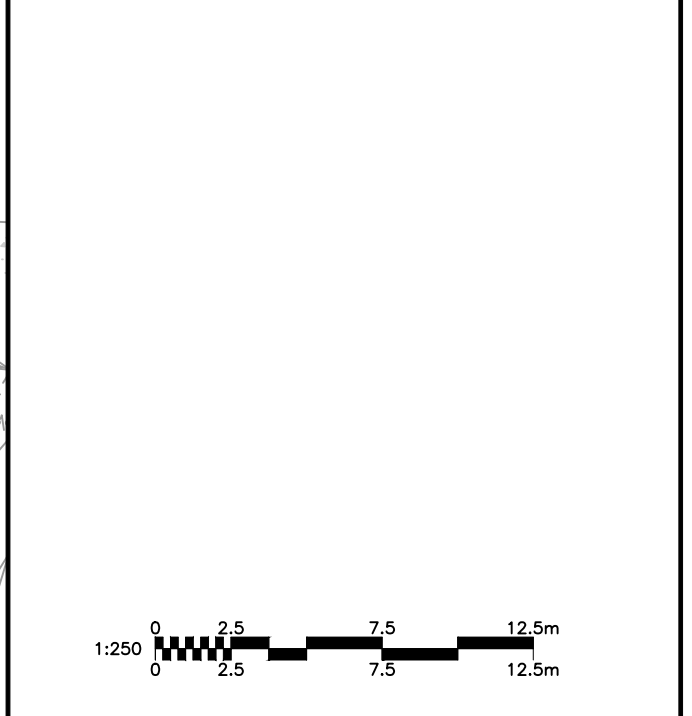
COPYRIGHT
 This drawing has been prepared solely for the intended use, thus any reproduction or distribution for any purpose other than authorized by IBI Group is forbidden. Written dimensions shall have precedence over scaled dimensions. Contractors shall verify and be responsible for all dimensions and conditions on the job, and IBI Group shall be informed of any variations from the dimensions and conditions shown on the drawing. Shop drawings shall be submitted to IBI Group for general conformance before proceeding with fabrication.
 IBI Group Professional Services (Canada) Inc.
 is a member of the IBI Group of companies.

ISSUES	No.	DESCRIPTION	DATE
1	ISSUED FOR COORDINATION	2023-03-15	
2	ISSUED FOR SPA	2023-03-15	
3			
4			
5			
6			
7			
8			
9			
10			

SEE 011, 012 FOR NOTES, LEGEND, CB TABLE, SHEET SECTIONS AND DETAILS



CONSULTANTS



IBI GROUP
 400 - 333 Preston Street
 Ottawa ON K1S 5M4 Canada
 tel 613 225-1211 fax 613 225-5866
 ibigroup.com

PROJECT
**BUILDING 17
 CHICK-FIL-A**
 333 HUNTMAR DRIVE

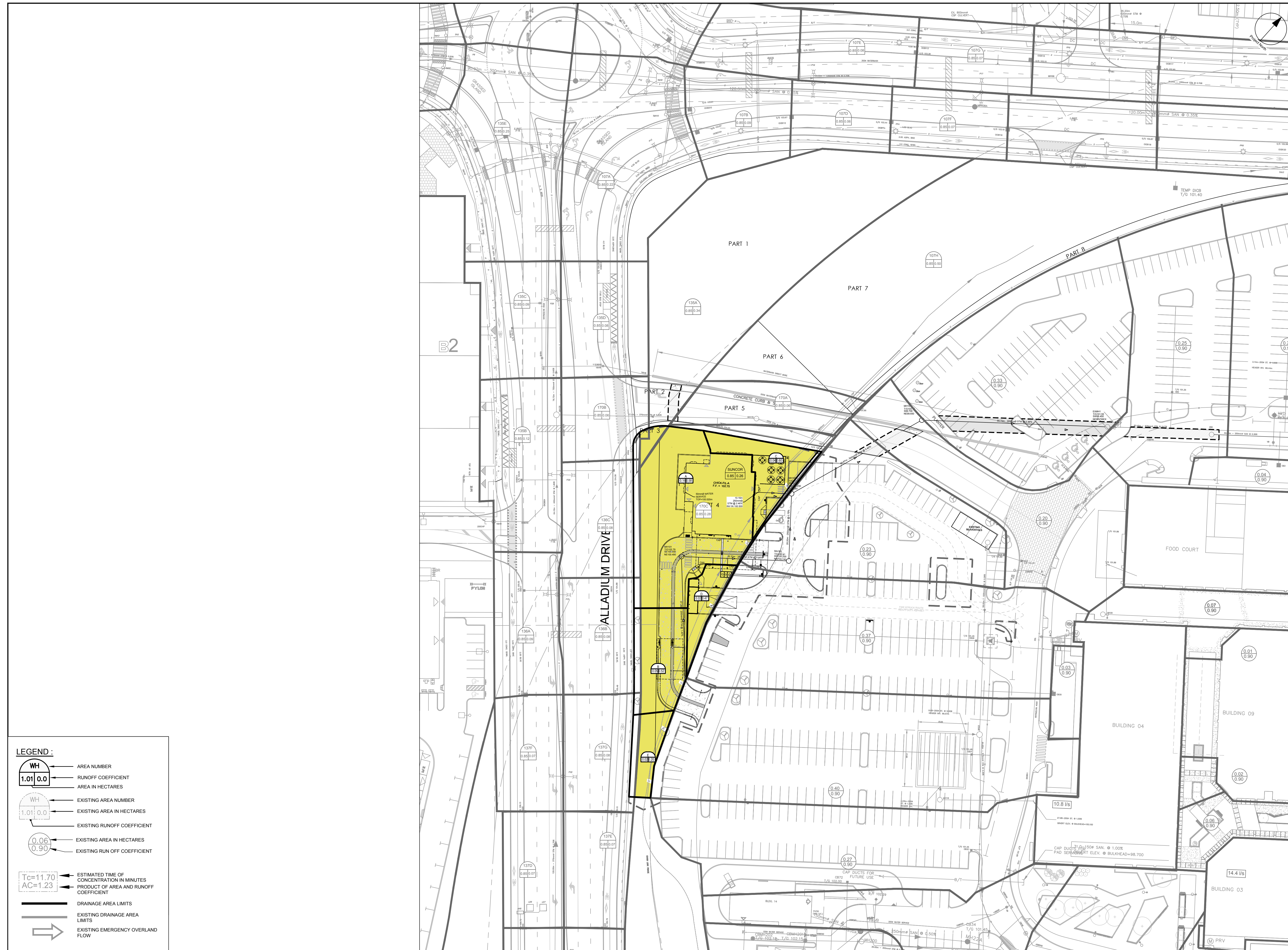
PROJECT NO:
141991
 DRAWN BY:
D.P.S. / S.P.G.
 PROJECT MGR:
S.E.L.
 SHEET TITLE
SITE GRADING PLAN

CHECKED BY:
J.I.M.
 APPROVED BY:
S.E.L.

SHEET NUMBER
C-200
 ISSUE
2

CITY PLAN No. xxxxx

CITY FILE No. D07-XX-XX-XXXX
 File Location: J:\141991_Chick-Fil-A_7.0_Production\03_Design\03_Site\03_Site Grading\PLAN.dwg Last Saved: March 15, 2023, by dsuima Printed: Wednesday, March 15, 2023, 12:22:56 PM by Don Suma



LEGEND :

	AREA NUMBER
	RUNOFF COEFFICIENT
	AREA IN HECTARES
	EXISTING AREA NUMBER
	EXISTING AREA IN HECTARES
	EXISTING RUNOFF COEFFICIENT
	EXISTING AREA IN HECTARES
	EXISTING RUN OFF COEFFICIENT
	ESTIMATED TIME OF CONCENTRATION IN MINUTES
	PRODUCT OF AREA AND RUNOFF COEFFICIENT
	DRAINAGE AREA LIMITS
	EXISTING DRAINAGE AREA LIMITS
	EXISTING EMERGENCY OVERLAND FLOW

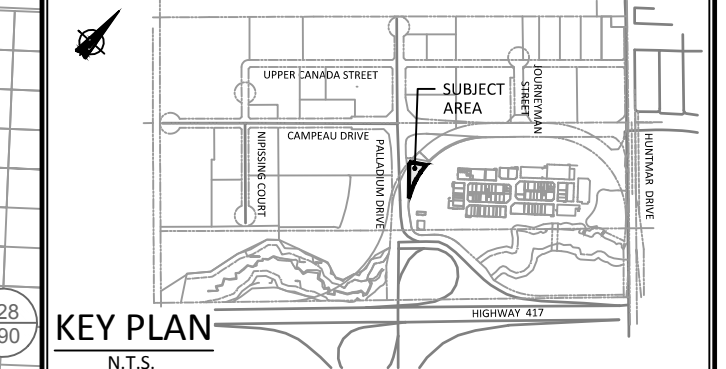
CLIENT
RIOCAN REIT
 RIOCAN YONGE EGLINTON CENTER, 2300 YONGE ST, SUITE 500

COPYRIGHT
 This drawing has been prepared solely for the intended use, thus any reproduction or distribution for any purpose other than authorized by IBI Group is forbidden. Written dimensions shall have precedence over scaled dimensions. Contractors shall verify and be responsible for all dimensions and conditions on the job, and IBI Group shall be informed of any variations from the dimensions and conditions shown on the drawing. Shop drawings shall be submitted to IBI Group for general conformance before proceeding with fabrication.
 IBI Group Professional Services (Canada) Inc.
 is a member of the IBI Group of companies.

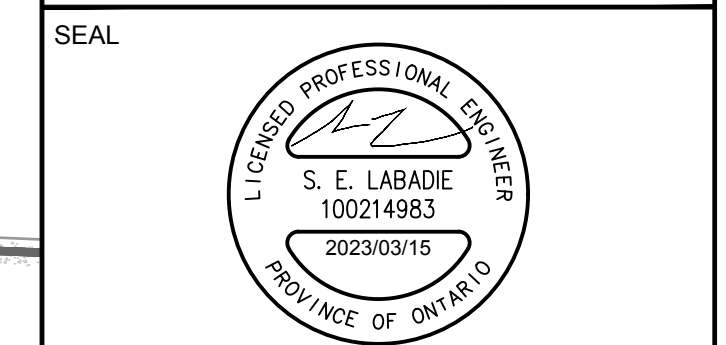
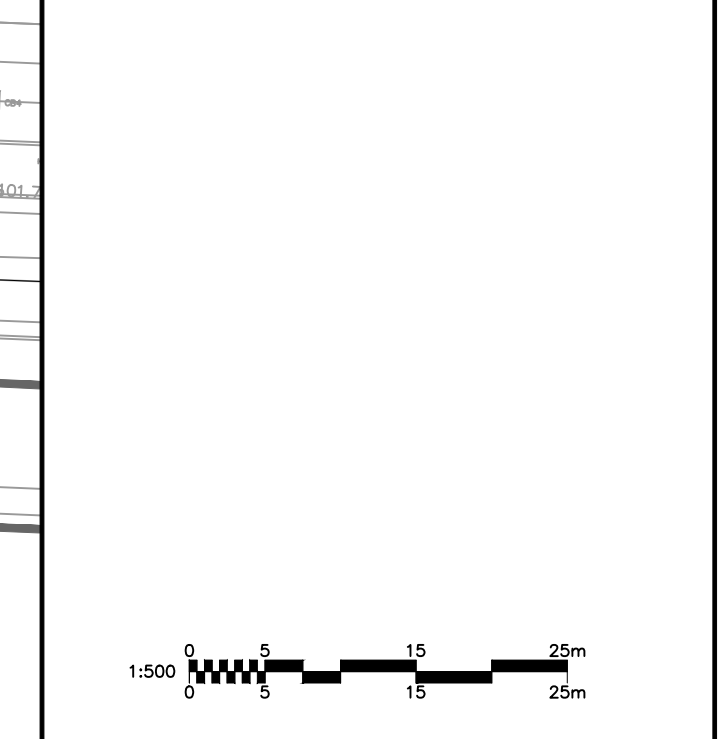
ISSUES

No.	DESCRIPTION	DATE
1	ISSUED FOR COORDINATION	2023-03-03
2	ISSUED FOR SPA	2023-03-03
3		
4		
5		
6		
7		
8		
9		
10		

SEE 011, 012 FOR NOTES, LEGEND, CB TABLE, SHEET SECTIONS AND DETAILS



CONSULTANTS



IBI GROUP
 400 - 333 Preston Street
 Ottawa ON K1S 9M4 Canada
 tel 613 225 1311 fax 613 225 5866
 ibigroup.com

PROJECT
BUILDING 17
CHICK-FIL-A
 333 HUNTMAR DRIVE

PROJECT NO:
 141991

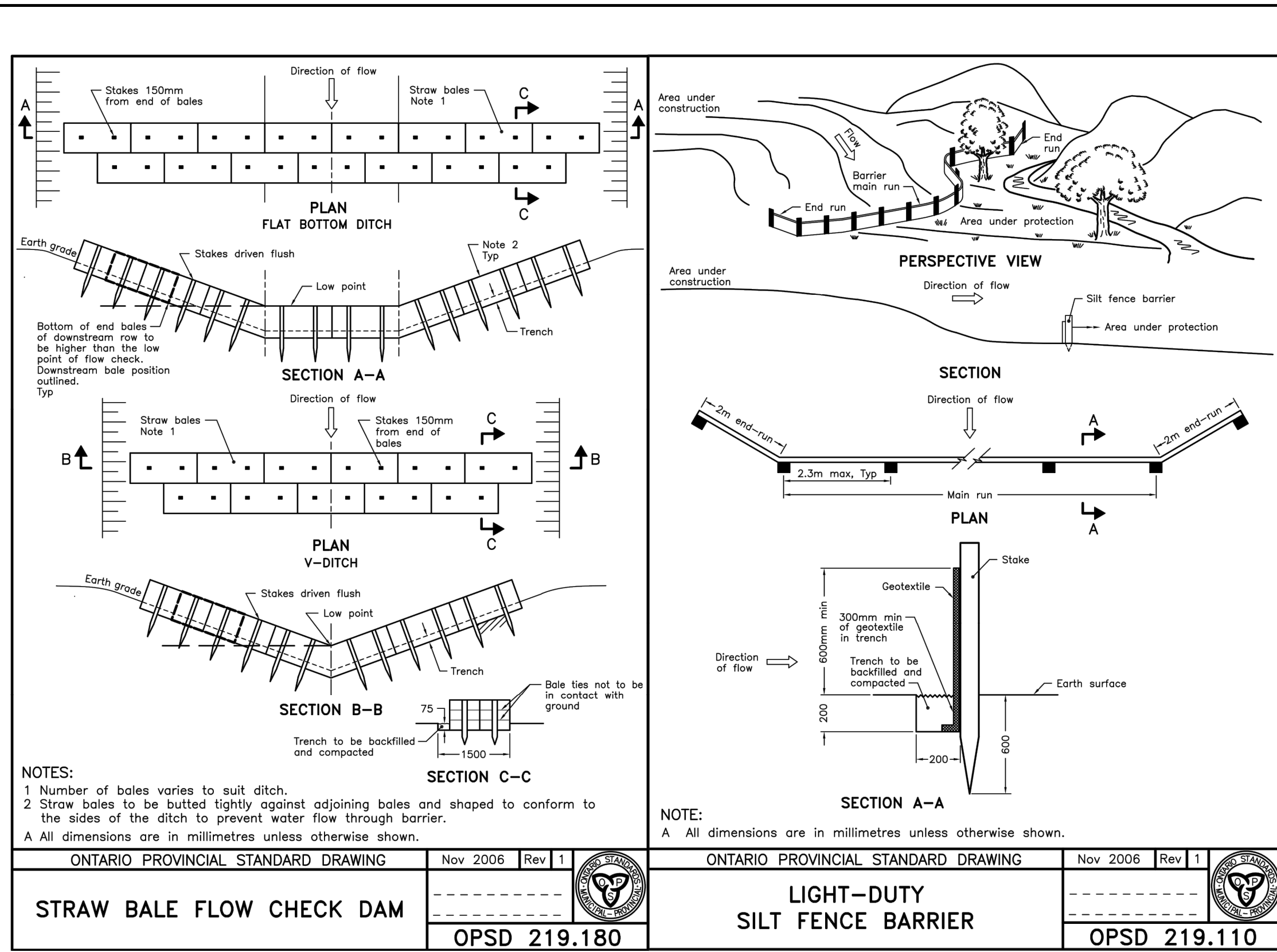
DRAWN BY: D.P.S. / S.P.G.
PROJECT MGR: S.L.B.

CHECKED BY: S.L.B.
APPROVED BY: J.I.M.

SHEET TITLE
STORM DRAINAGE AREA PLAN

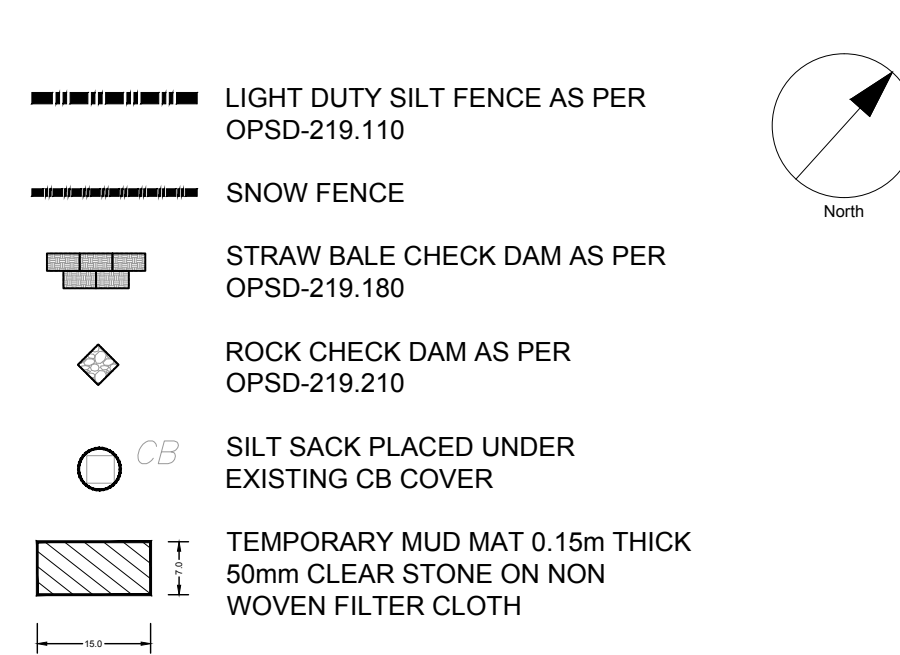
SHEET NUMBER C-500 **ISSUE** 2

CITY FILE No. D07-XX-XXXX
 File Location: J:\141991_Chick-Fil-A_170_Production\03_Storm Drainage Area Plan.dwg Last Saved: March 15, 2023, by saluma
 Plotted: Wednesday, March 15, 2023, 12:23:24 PM by Don Sluma



ONTARIO PROVINCIAL STANDARD DRAWING	Nov 2006	Rev 1	ONTARIO PROVINCIAL STANDARD DRAWING	Nov 2006	Rev 1
STRAW BALE FLOW CHECK DAM			LIGHT-DUTY SILT FENCE BARRIER		
	OPSD 219.180			OPSD 219.110	

- LEGEND:**
- LIGHT DUTY SILT FENCE AS PER OPSD-219.110
 - SNOW FENCE
 - STRAW BALE CHECK DAM AS PER OPSD-219.180
 - ◇ ROCK CHECK DAM AS PER OPSD-219.210
 - CB SILT SACK PLACED UNDER EXISTING CB COVER
 - TEMPORARY MUD MAT 0.15m THICK 50mm CLEAR STONE ON NON WOVEN FILTER CLOTH
- NOTES:**
- THE CONTRACTOR SHALL IMPLEMENT BEST MANAGEMENT PRACTICES, TO PROVIDE FOR PROTECTION OF THE AREA DRAINAGE SYSTEM AND THE RECEIVING WATERCOURSE, DURING CONSTRUCTION ACTIVITIES. THE CONTRACTOR ACKNOWLEDGES THAT FAILURE TO IMPLEMENT APPROPRIATE EROSION AND SEDIMENT CONTROL MEASURES MAY BE SUBJECT TO PENALTIES IMPOSED BY ANY APPLICABLE REGULATORY AGENCY.
 - SILT FENCE TO BE ERECTED PRIOR TO EARTH WORKS BEING COMMENCED. SILT FENCE TO BE MAINTAINED UNTIL VEGETATION IS ESTABLISHED OR UNTIL START OF SUBSEQUENT PHASE.
 - STRAW BALE SEDIMENT TRAPS TO BE CONSTRUCTED IN EXISTING ROAD SIDE DITCHES. TRAPS TO REMAIN AND BE MAINTAINED UNTIL VEGETATION IS ESTABLISHED.
 - SILT SACK TO BE PLACED AND MAINTAINED UNDER COVER OF ALL CATCHBASINS. GEOTEXTILE SILT SACK IN STREET C&S TO REMAIN UNTIL ALL CURBS ARE CONSTRUCTED. GEOTEXTILE FABRIC IN RYCBs TO REMAIN UNTIL VEGETATION IS ESTABLISHED. ALL CATCHBASINS TO BE REGULARLY INSPECTED AND CLEANED, AS NECESSARY, UNTIL SOD AND CURBS ARE CONSTRUCTED.
 - CONTRACTOR TO PROVIDE DETAILS ON LOCATION(S) AND DESIGN OF DEWATERING TRAP(S) PRIOR TO COMMENCING WORK. CONTRACTOR ALSO RESPONSIBLE FOR MAINTAINING TRAP(S) AND ADJUSTING SIZE(S) IF DEEMED REQUIRED BY THE ENGINEER DURING CONSTRUCTION.
 - CONTRACTOR TO PROTECT EXISTING CATCHBASINS WITH FILTER CLOTH UNDER THE COVERS TO TRAP SEDIMENTATION. REFER TO IDENTIFIED STRUCTURES.
 - WORKS NOTED ABOVE ARE TO BE INSTALLED, INSPECTED, MAINTAINED AND ULTIMATELY REMOVED BY SERVICING CONTRACTOR.
 - THIS IS A 'LIVING DOCUMENT' AND MAY BE MODIFIED IN THE EVENT THE PROPOSED CONTROL MEASURES ARE INSUFFICIENT



CLIENT
RIOCAN REIT
 RIOCAN YONGE EGLINTON CENTER, 2300 YONGE ST, SUITE 500

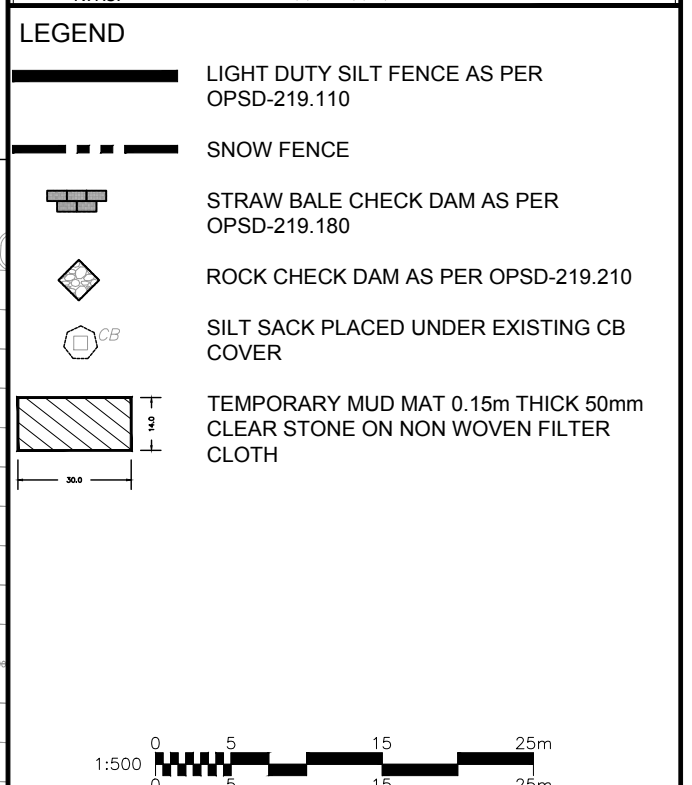
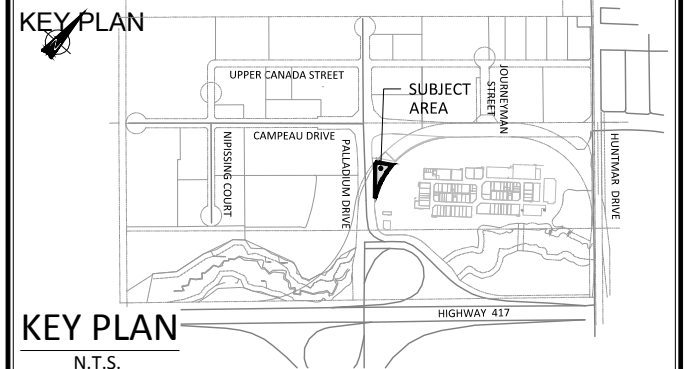
COPYRIGHT
 This drawing has been prepared solely for the intended use, any reproduction or distribution for any purpose other than that authorized by IBI Group is forbidden. Written dimensions shall have precedence over scaled dimensions. Contractors shall verify and be responsible for all dimensions and conditions on the job, and IBI Group shall be informed of any variations from the dimensions and conditions shown on the drawing. Shop drawings shall be submitted to IBI Group for general confirmation before proceeding with fabrication.

IBI Group Professional Services (Canada) Inc.
 is a member of the IBI Group of companies.

ISSUES

No.	DESCRIPTION	DATE
1	ISSUED FOR COORDINATION	2023-03-09
2	ISSUED FOR SPA	2023-03-09
3		
4		
5		
6		
7		
8		
9		
10		

SEE 011, 012 FOR NOTES, LEGEND, CB TABLE, STREET SECTIONS AND DETAILS



SEAL

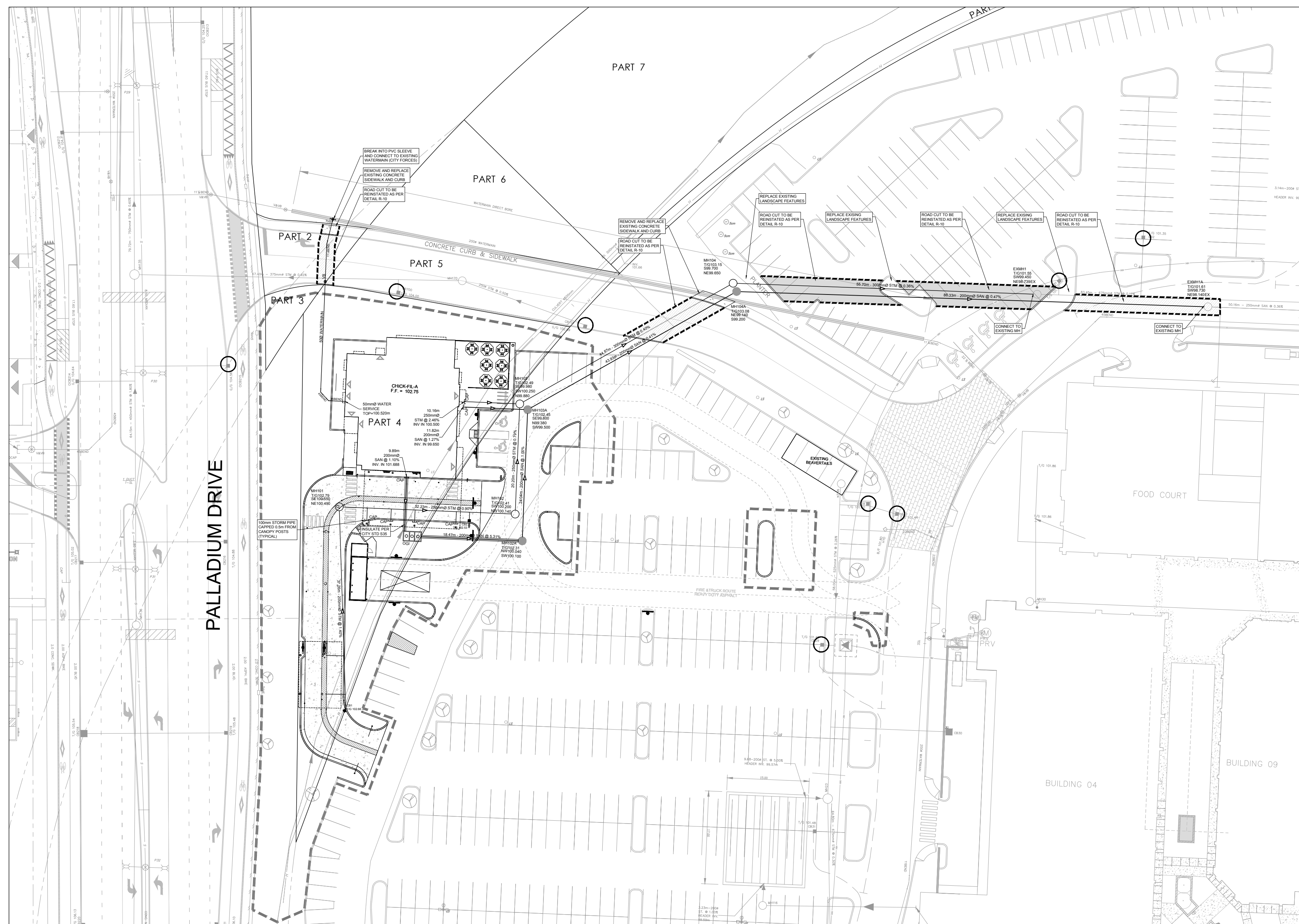
IBI GROUP
 Suite 400 - 333 Preston Street
 Ottawa, ON K1S 5N4 Canada
 Tel: 613 225 1311 / 613 241 3300 Fax: 613 225 9868
 ibigroup.com

PROJECT
BUILDING 17 CHICK-FIL-A
 333 HUNTMAR DRIVE

PROJECT NO: 141991
DRAWN BY: D.P.S. / S.P.G.
PROJECT MGR: S.E.L.
CHECKED BY: J.I.M.
APPROVED BY: S.E.L.

SHEET TITLE
EROSION AND SEDIMENTATION CONTROL PLAN

SHEET NUMBER C-900 **ISSUE** 2



CITY FILE No. D07-XX-XX-XXXX
 SCALE CHECK
 File Location: \\141991\141991_Chick-Fil-A_170_Production\7.03_Design\02_Civil\Sheet\C-900 SEDIMENT - EROSION PLAN.dwg Last Saved: March 14, 2023, by dsuma Plotted: Wednesday, March 15, 2023 12:23:32 PM by Don Surina