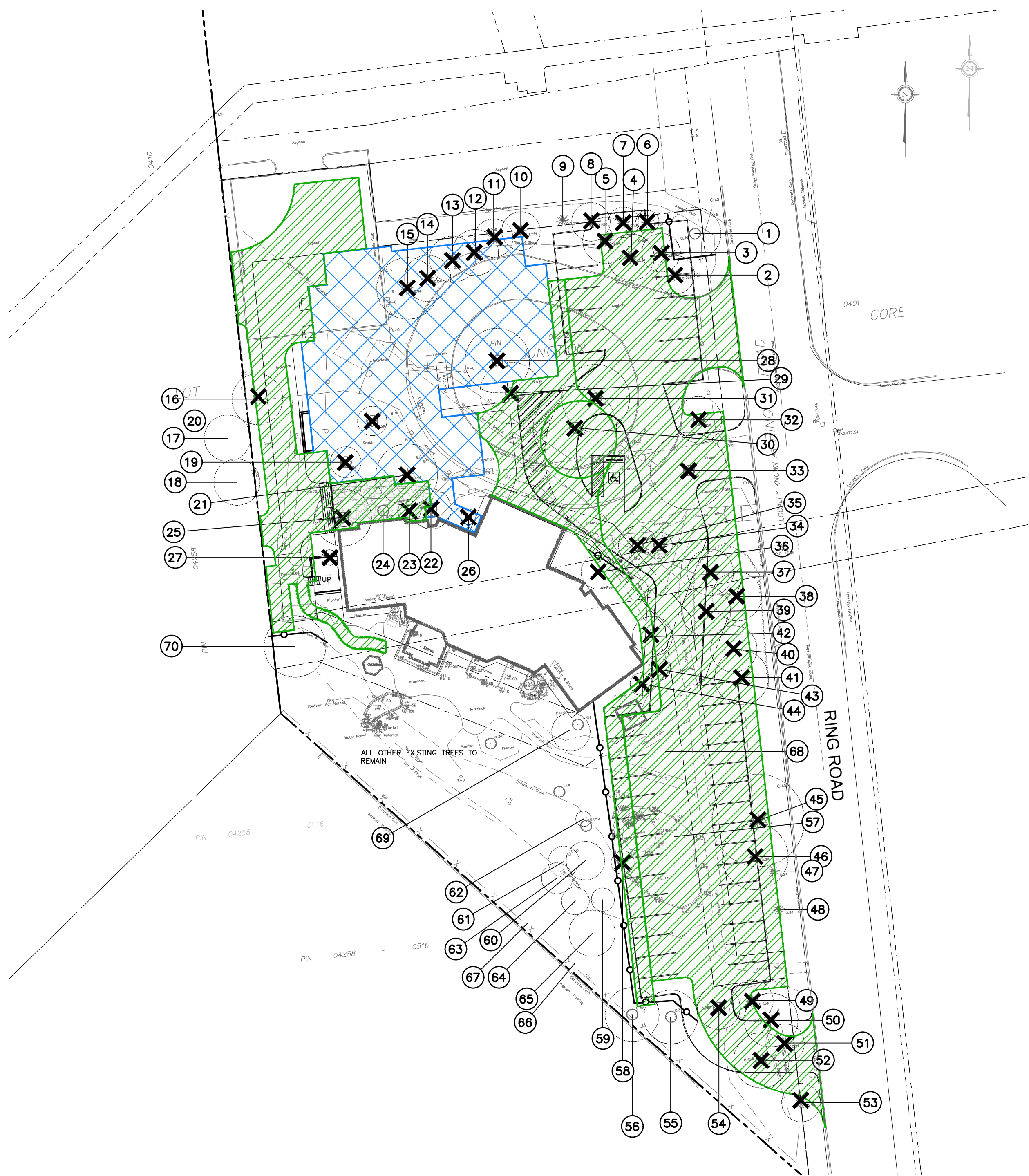


1 EXISTING VEGETATION

Scale: 1:400

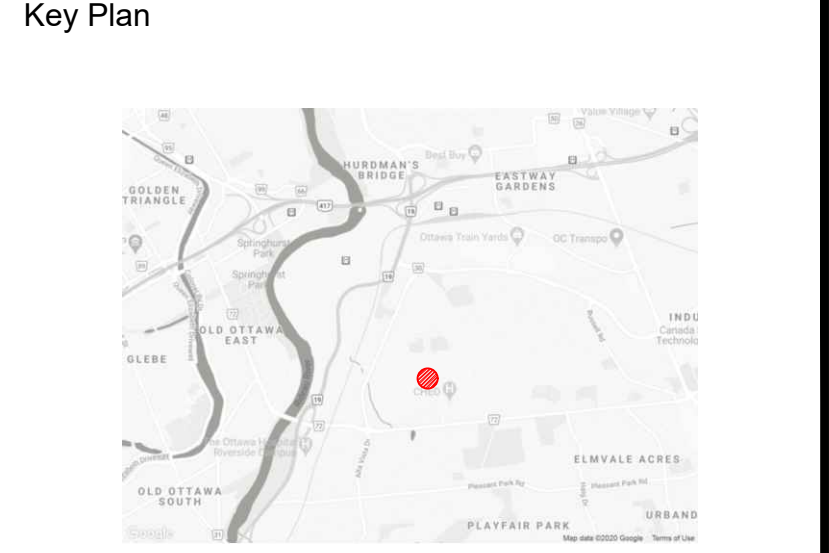
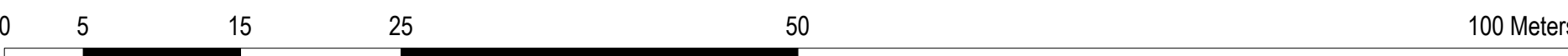


2 PROPOSED DEVELOPMENT

Scale: 1:400

- NOTES:**
- THE EXISTING PROPERTY CONTAINS A 2-STORY BUILDING, SURFACE PARKING, AND OUTDOOR AMENITY SPACE. EXISTING VEGETATION CONSISTS OF PLANTED TREES, VOLUNTEER TREES (SUCH AS MAPLE AND BUCKTHORN SPECIES), SHRUBS, PERENNIALS, AND TURFGRASS. THE SITE IS FLAT IN PROXIMITY TO THE EXISTING BUILDING, WHEREAS THE EXTERIOR OF THE SITE HAS GENTLY SLOPED BERMS.
 - APPROXIMATELY 620 m² OF THE SITE IS CURRENTLY OCCUPIED BY AN EXISTING BUILDING FOOTPRINT.
 - APPROXIMATELY 805 m² TO BE COVERED BY THE PROPOSED BUILDING FOOTPRINTS.
 - APPROXIMATELY 2600 m² TO BE HARD SURFACES.
 - THE PROPOSED DEVELOPMENT REQUIRES THE REMOVAL OF FORTY-FOUR (48) TREES
 - 12 ARE DUE TO THE PROPOSED BUILDING.
 - 26 ARE DUE TO REQUIRED PARKING AREA.
 - 10 ARE DUE TO PROPOSED LANDSCAPING.
 - FOR RETAINED TREES:
 - ERECT A FENCE AT THE CRITICAL ROOT ZONE (CRZ) OF TREES;
 - DO NOT PLACE ANY MATERIAL OR EQUIPMENT WITHIN THE CRZ OF THE TREE;
 - DO NOT ATTACH ANY SIGNS, NOTICES OR POSTERS TO ANY TREE;
 - DO NOT RAISE OR LOWER THE EXISTING GRADE WITHIN THE CRZ WITHOUT APPROVAL;
 - TUNNEL OR BORE WHEN DIGGING WITHIN THE CRZ OF A TREE
 - DO NOT DAMAGE THE ROOT SYSTEM, TRUNK OR BRANCHES OF ANY TREE;
 - ENSURE THAT EXHAUST FUMES FROM ALL EQUIPMENT ARE NOT DIRECTED TOWARDS ANY TREE'S CANOPY.

- LEGEND**
- PROPERTY LINE
 - TREE IDENTIFICATION NUMBER
 - CRITICAL ROOT ZONE
 - TREE TO BE REMOVED
 - PROPOSED BUILDING
 - PROPOSED HARD SURFACES
 - PROPOSED TREE PROTECTION



No.	Revision	Date
4	SITE PLAN 2nd SUBMISSION	17 MAR, 2023
3	ISSUED FOR SPA	16 DEC 2022
2	ISSUED FOR REVIEW	11 NOV 2022
1	ISSUED FOR REVIEW	20 NOV 2020

North:

Stamp:

CSW Landscape Architecture
 Urban Design
 Site Planning
 Recreation and Park Planning
 Project Management

319 McRae Avenue, Suite 502, Ottawa, Ontario, K1Z 0B9
 Tel: (613) 729-4536

- All measurements in millimeters unless specified otherwise. Do not scale drawing. All drawings to be read in conjunction with written specifications.
- Copyright reserved. This drawing is the exclusive property of CSW Landscape Architects Ltd. and shall not be used without the consent thereof.
- This Drawing may not be used for construction until signed by the landscape architect. It is the responsibility of the contractor to:
 - check and verify all dimensions on site;
 - report all errors and/or omissions to the landscape architect;
 - comply with all pertinent codes and by-laws;
 - check and verify locations of all underground services with all local utilities prior to any digging.

Project:
RONALD MCDONALD HOUSE
 407 SMYTH ROAD
 OTTAWA., ONTARIO

Drawing:
TREE CONSERVATION REPORT

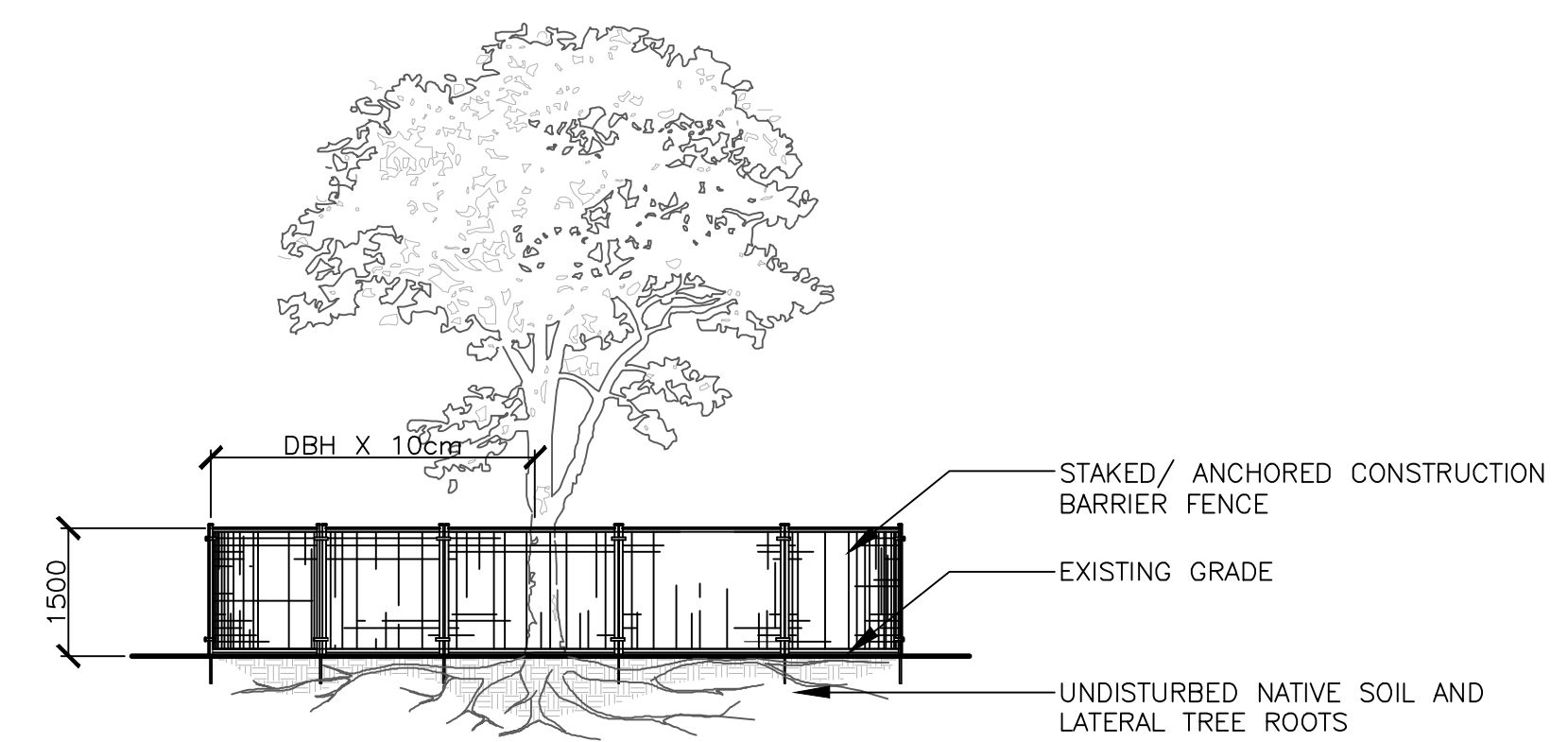
Scale: 1:400	Date: 20 NOV, 2020
Design By: PG	Drawn By: PG
Project Number: 2060-01	Sheet Number: TCR 1.1

Last Saved: 2023/03/17 11:11:37 AM
 File Location: Z:\Projects\2060-01 - Ronald McDonald House\Drawings\TCR\TCR-04\Tree Conservation Report.dwg

Last Saved: 2023/03/17 11:37 AM
 File Location: Z:\Projects\2060-01 - Ronald McDonald House\Drawings\TCR\CR-042060-01 - RMHC - TOR 04 Tree Conservation Report.dwg

Tree #	Botanical Name	Common Name	Caliper (cm)	Condition	High Quality Tree	Rare Tree	Comments	Disposition
1	Tilia Cordata	Littleleaf Linden	34	Good	No	No	Privately owned, Symmetrical canopy, Pruned @ limbs, Single stem	Remain
2	Picea pungens	Colorado Spruce	25	Good	No	No	Privately owned, Asymmetrical canopy, Die-back ~10% @ canopy, Broken limbs, Single stem	Remove
3	Picea pungens	Colorado Spruce	25	Moderate	No	No	Privately owned, Asymmetrical canopy, Die-back ~35% @ limbs, Single stem, Co-dominant leaders 2 @ ~3m above grade	Remove
4	Picea pungens	Colorado Spruce	30	Good	No	No	Privately owned, Asymmetrical canopy, Die-back ~15% @ limbs, Single stem	Remove
5	Picea pungens	Colorado Spruce	30	Moderate	No	No	Privately owned, Asymmetrical canopy, Die-back ~35% @ limbs, Broken limbs, Single stem	Remove
6	Picea pungens	Colorado Spruce	15	Moderate	No	No	Privately owned, Asymmetrical canopy, Die-back ~10% @ limbs, Limbed up, Single stem	Retain
7	Picea pungens	Colorado Spruce	20	Missing	No	No	Privately owned, Asymmetrical canopy, Die-back ~30% @ limbs, Single stem	
8	Picea pungens	Colorado Spruce	25	Moderate	No	No	Privately owned, Asymmetrical canopy, Die-back ~20% @ limbs, Broken limbs, Single stem	Retain
9	Picea pungens	Colorado Spruce	25	Dead	No	No	Privately owned, Symmetrical canopy, Die-back ~30% @ limbs, Single stem	Remove
10	Picea pungens	Colorado Spruce	25	Moderate	No	No	Privately owned, Symmetrical canopy, Die-back ~10% @ canopy & crown, Pruned, Single stem	Remove
11	Pinus nigra	Austrian Pine	25	Poor	No	No	Privately owned, Asymmetrical canopy, Die-back ~75% @ canopy, Broken limbs, Limbed up, Single stem	Remove
12	Pinus nigra	Austrian Pine	30	Moderate	No	No	Privately owned, Asymmetrical canopy, Die-back ~10% @ canopy, Broken limbs, Limbed up, Single stem	Remove
13	Pinus nigra	Austrian Pine	30	Moderate	No	No	Privately owned, Asymmetrical canopy, Die-back ~10% @ canopy, Broken limbs, Limbed up, Single stem	Remove
14	Pinus nigra	Austrian Pine	30	Good	No	No	Privately owned, Asymmetrical canopy, Broken limbs, Limbed up, Single stem	Remove
15	Pinus nigra	Austrian Pine	40	Good	No	No	Privately owned, Asymmetrical canopy, Die-back ~10% @ limbs, Limbed up, Single stem	Remove
16	Pinus nigra	Austrian Pine	33	Good	No	No	Privately owned, Asymmetrical canopy, Die-back ~5% @ canopy, Broken limbs, Limbed up, Single stem	Remove
17	Pinus nigra	Austrian Pine	30	Good	No	No	Privately owned, Asymmetrical canopy, Die-back ~10% @ limbs, Single stem	Retain
18	Pinus nigra	Austrian Pine	30	Good	No	No	Privately owned, Asymmetrical canopy, Die-back ~10% @ limbs, Broken limbs, Single stem, Co-dominant leaders 2 @ ~2m above grade	Retain
19	Alnus spp	Alder	5@20	Moderate	No	No	Privately owned, Symmetrical canopy, Broken limbs, Pruned @ limbs, Multi stem: 5, Bark rot @ trunk, Included bark	Remove
20	Acer platanoides	Norway Maple	19	Good	No	No	Privately owned, Symmetrical canopy, Pruned @ limbs, Single stem	Remove
21	Picea pungens	Colorado Spruce	40	Good	No	No	Privately owned, Symmetrical canopy, Die-back ~ 5% @ limbs, Broken limbs, Limbed up, Single stem	Remove
22	Malus spp	Crabapple	26	Missing	No	No	Privately owned, Asymmetrical canopy, Pruned @ limbs, Single stem, Bark rot @ cavities, Included bark	
23	Acer ginnala	Amur Maple	2@25	Moderate	No	No	Privately owned, Asymmetrical canopy, Broken limbs, Pruned @ limbs, Single stem, Co-dominant leaders 2 @ ~1m above grade, Heart rot @ trunk & cavities	Remove
24				Dead				
25	Malus spp	Crabapple	37	Good	No	No	Privately owned, Asymmetrical canopy, Poor branch angle, Single stem	Remove
26	Sorbus spp	Mountain Ash	10	Moderate	No	No	Privately owned, Asymmetrical canopy, Broken limbs, Single stem, Bark rot @ trunk	Remove
27	Prunus spp	Cherry	3@10	Poor	No	No	Privately owned, Asymmetrical canopy, Multi stem: 3, Heart rot @ trunk	Remove
28	Quercus macrocarpa	Bur Oak	42	Moderate	No	No	Privately owned, Symmetrical canopy, Die-back ~20% @ crown, Broken limbs, Pruned @ limbs, Single stem	Remove
29	Quercus macrocarpa	Bur Oak	40	Moderate	No	No	Privately owned, Asymmetrical canopy, Die-back ~15% @ canopy, Pruned @ limbs, Single stem	Remove
30	Quercus macrocarpa	Bur Oak	54	Moderate	No	No	Privately owned, symmetrical canopy, Die-back ~10% @ canopy, Pruned @ limbs, Single stem	Remove
31	Quercus macrocarpa	Bur Oak	44	Moderate	No	No	Privately owned, Asymmetrical canopy, Die-back ~10% @ canopy, Pruned @ limbs, Single stem	Remove
32	Quercus macrocarpa	Bur Oak	30	Moderate	No	No	Privately owned, Asymmetrical canopy, Die-back ~15% @ canopy, Broken limbs, Pruned @ limbs, Single stem	Remove
33	Quercus macrocarpa	Bur Oak	50	Moderate	No	No	Privately owned, Symmetrical canopy, Die-back ~ 20% @ canopy, Broken limbs, Single stem	Remove
34	Malus spp	Crabapple	17	Good	No	No	Privately owned, Asymmetrical canopy, Pruned @ limbs, Single stem	Remove
35	Malus spp	Crabapple	25	Good	No	No	Privately owned, Symmetrical canopy, Single stem	Remove
36	Juniperus virginiana	Eastern Red Cedar	22	Good	No	No	Privately owned, Asymmetrical canopy, Single stem	Remove
37	Pinus nigra	Austrian Pine	30	Missing	No	No	Privately owned, Asymmetrical canopy, Single stem	
38	Pinus nigra	Austrian Pine	32	Poor	No	No	Privately owned, Asymmetrical canopy, Die-back ~60% @ canopy, Broken limbs	Remove
39	Pinus nigra	Austrian Pine	32	Moderate	No	No	Privately owned, Asymmetrical canopy, Die-back ~ 30% @ canopy, Broken limbs, Single stem	Remove
40	Pinus nigra	Austrian Pine	30	Moderate	No	No	Privately owned, Asymmetrical canopy, Die-back ~ 30% @ limbs, Single stem	Remove
41	Pinus nigra	Austrian Pine	35	Good	No	No	Privately owned, Asymmetrical canopy, Broken limbs, Single stem, Co-dominant leaders 2 @ ~2m above grade	Remove
42	Malus spp	Crabapple	26	Good	No	No	Privately owned, Asymmetrical canopy, Pruned @ limbs, Single stem, Leaning	Remove
43	Malus spp	Crabapple	14	Moderate	No	No	Privately owned, Asymmetrical canopy, Limbed up, Single stem	Remove
44	Malus spp	Crabapple	15	Moderate	No	No	Privately owned, Asymmetrical canopy, Single stem	Remove
45	Pinus nigra	Austrian Pine	60	Good	No	No	Privately owned, Symmetrical canopy, Single stem	Remove
46	Pinus nigra	Austrian Pine	43	Good	No	No	Privately owned, Asymmetrical canopy, Die-back ~20% @ limbs, Broken limbs, Poor branch angle, Single stem	Remove
47	Pinus nigra	Austrian Pine	25	Missing	No	No	Privately owned, Asymmetrical canopy, Die-back ~60% @ canopy, Broken limbs, Single stem	
48	Pinus nigra	Austrian Pine	30	Missing	No	No	Privately owned, Asymmetrical canopy, Die-back ~50% @ canopy, Single stem	
49	Picea pungens	Colorado Spruce	27	Good	No	No	Privately owned, Asymmetrical canopy, Die-back ~5% @ canopy, Single stem	Remove

Tree #	Botanical Name	Common Name	Caliper (cm)	Condition	High Quality Tree	Rare Tree	Comments	Disposition
50	Picea pungens	Colorado Spruce	35	Good	No	No	Privately owned, Asymmetrical canopy, Die-back ~5% @ canopy, Single stem	Remove
51	Pinus nigra	Austrian Pine	25	Poor	No	No	Privately owned, Asymmetrical canopy, Die-back ~70% @ canopy, Broken limbs, Limbed up, Single stem	Remove
52	Pinus nigra	Austrian Pine	36	Good	No	No	Privately owned, Symmetrical canopy, Single stem	Remove
53	Pinus nigra	Austrian Pine	25	Moderate	No	No	Privately owned, Asymmetrical canopy, Limbed up, Single stem, Leaning	Remove
54	Catalpa speciosa	Northern Catalpa	28	Good	No	No	Privately owned, Symmetrical canopy, Single stem, Bark rot @ trunk & cavities	Remove
55	Catalpa speciosa	Northern Catalpa	34	Good	No	No	Privately owned, Symmetrical canopy, Poor branch angle, Single stem	Retain
56	Catalpa speciosa	Northern Catalpa	35	Good	No	No	Privately owned, Symmetrical canopy, Broken limbs, Single stem	Retain
57	Thuja occidentalis	Northern White Cedar	3@15	Missing	No	No	Privately owned, Symmetrical canopy, single stem, Co-dominant leaders 2 @ ~1m above grade	
58	Juniperus virginiana	Eastern Red Cedar	15	Moderate	No	No	Privately owned, Symmetrical canopy, Single stem, Co-dominant leaders 2 @ ~1m above grade	Remove
59	Rhamnus cathartica	Buckthorn	4 @ 15	Moderate	No	No	Privately owned, Asymmetrical canopy, Broken limbs, Poor branch angle, Multi stem: 4, Bark rot @ trunk	Retain
60	Picea pungens var. glauca	Colorado Blue Spruce	25	Good	No	No	Privately owned, Asymmetrical canopy, Single stem	Retain
61	Picea pungens var. glauca	Colorado Blue Spruce	20	Good	No	No	Privately owned, Asymmetrical canopy, Die-back ~ 5% @ canopy, Single stem	Retain
62	Ginkgo biloba	Maidenhair Tree	>10	Good	No	No	Privately owned, Symmetrical canopy, Single stem, Commemorative Tree	Retain
63	Picea pungens var. glauca	Colorado Spruce	20	Good	No	No	Privately owned, Symmetrical canopy, Single stem	Retain
64	Picea pungens var. glauca	Colorado Blue Spruce	18	Good	No	No	Privately owned, Symmetrical canopy, Single stem	Retain
65	Picea pungens	Colorado Spruce	30	Good	No	No	Privately owned, Symmetrical canopy, Die-back ~5% @ canopy, Single stem	Retain
66				Missing				
67				Missing				
68				Missing				
69	Acer ginnala	Amur Maple	4@25	Moderate	No	No	Privately owned, Asymmetrical canopy, Multi stem: 4, Leaning, Included bark	Retain
70	Pinus nigra	Austrian Pine	40	Good	No	No	Privately owned, Symmetrical canopy, Die-back ~10% @ limbs, Single stem	Retain



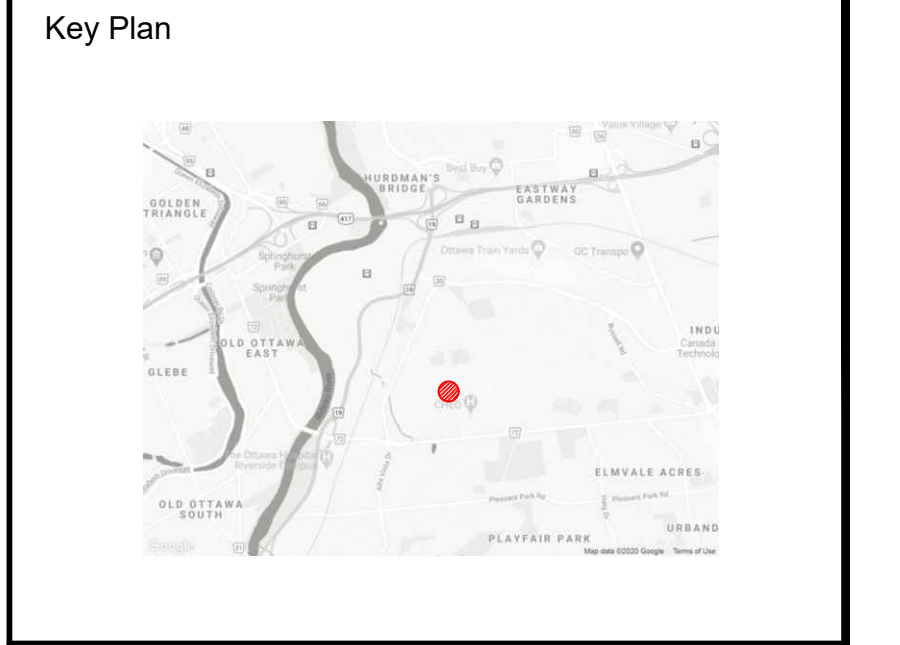
NOTES:

THE FOLLOWING PROTECTION MEASURES MUST BE IMPLEMENTED FOR RETAINED TREES, BOTH ON SITE AND ADJACENT SITES, PRIOR TO ANY TREE REMOVAL OR SITE WORKS AND MAINTAINED FOR THE DURATION OF CONSTRUCTION ON SITE.

- UNDER THE GUIDANCE OF AN ARBORIST, ERECT A FENCE AT THE CRITICAL ROOT ZONE (CRZ) OF TREES WHERE THE CRZ IS ESTABLISHED AS BEING 10 CENTIMETERS FROM THE TRUNK FOR EVERY CENTIMETER OF TRUNK DIAMETER AT BREAST HEIGHT. THE CRZ IS CALCULATED AS DBH X 10cm.
- DO NOT PLACE ANY MATERIAL OR EQUIPMENT WITHIN THE CRZ OF THE TREE
- DO NOT ATTACH ANY SIGNS, NOTICES OR POSTERS TO ANY TREE
- DO NOT RAISE OR LOWER THE GRADE WITHIN THE CRZ WITHOUT APPROVAL
- TUNNEL OR BORE WHEN DIGGING WITHIN THE CRZ OF A TREE
- DO NOT DAMAGE THE ROOT SYSTEM, TRUNK, OR BRANCHES OR ANY TREE
- ENSURE THAT EXHAUST FUMES FROM ALL EQUIPMENT ARE NOT DIRECTED TOWARDS ANY TREE CANOPY

1 TREE PROTECTION FENCING N.T.S.

0 5 15 25 50 100 Meters



No.	Revision	Date
4	SITE PLAN 2nd SUBMISSION	17 MAR, 2023
3	ISSUED FOR SPA	16 DEC 2022
2	ISSUED FOR REVIEW	11 NOV 2022
1	ISSUED FOR REVIEW	20 NOV 2020

North:

Stamp:

CSW Landscape Architecture
 Urban Design
 Site Planning
 Recreation and Park Planning
 Project Management

319 McRae Avenue, Suite 502, Ottawa, Ontario, K1Z 0B9
 Tel: (613) 729-4536

- All measurements in millimeters unless specified otherwise. Do not scale drawing. All drawings to be read in conjunction with written specifications.
- Copyright reserved. This drawing is the exclusive property of CSW Landscape Architects Ltd. and shall not be used without the consent thereof.
- This Drawing may not be used for construction until signed by the landscape architect. It is the responsibility of the contractor to:
 - check and verify all dimensions on site;
 - report all errors and/or omissions to the landscape architect;
 - comply with all pertinent codes and by-laws;
 - check and verify locations of all underground services with all local utilities prior to any digging.

Project: **RONALD MCDONALD HOUSE**

407 SMYTH ROAD
 OTTAWA., ONTARIO

Drawing: **TREE CONSERVATION REPORT**

Scale: 1:400	Date: 20 NOV, 2020
Design By: PG	Drawn By: PG
Project Number: 2060-01	Sheet Number: TCR 1.2