

- LEGEND:**
- PROPOSED DECIDUOUS TREE
 - PROPOSED CONIFEROUS TREE
 - CRITICAL ROOT ZONE
 - TREE REMOVAL (REFER TO TCR1.1)
 - SHRUBS
 - TURF GRASS
 - WOOD DECKING
 - PAVING TYPE 1
 - PAVING TYPE 2
 - 2.5m STREETLIGHT SETBACK

No.	Revision	Date
2	SITE PLAN 2ND SUBMISSION	17 MAR, 2023
1	ISSUED FOR SPA	16 DEC, 2022

North:

Stamp:

CSW Landscape Architecture
 Urban Design
 Site Planning
 Recreation and Park Planning
 Project Management

319 McRae Avenue, Suite 502, Ottawa, Ontario, K1Z 0B9
 Tel: (613) 729-4536

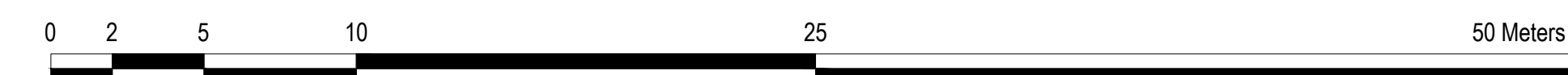
- All measurements in millimeters unless specified otherwise. Do not scale drawing. All drawings to be read in conjunction with written specifications.
- Copyright reserved. This drawing is the exclusive property of CSW Landscape Architects Ltd. and shall not be used without the consent thereof.
- This Drawing may not be used for construction until signed by the landscape architect. It is the responsibility of the contractor to:
 - check and verify all dimensions on site;
 - report all errors and/or omissions to the landscape architect;
 - comply with all pertinent codes and by-laws;
 - check and verify locations of all underground services with all local utilities prior to any digging.

Project:
RONALD McDONALD HOUSE CHARITIES

407 SMYTH ROAD
 OTTAWA, ONTARIO

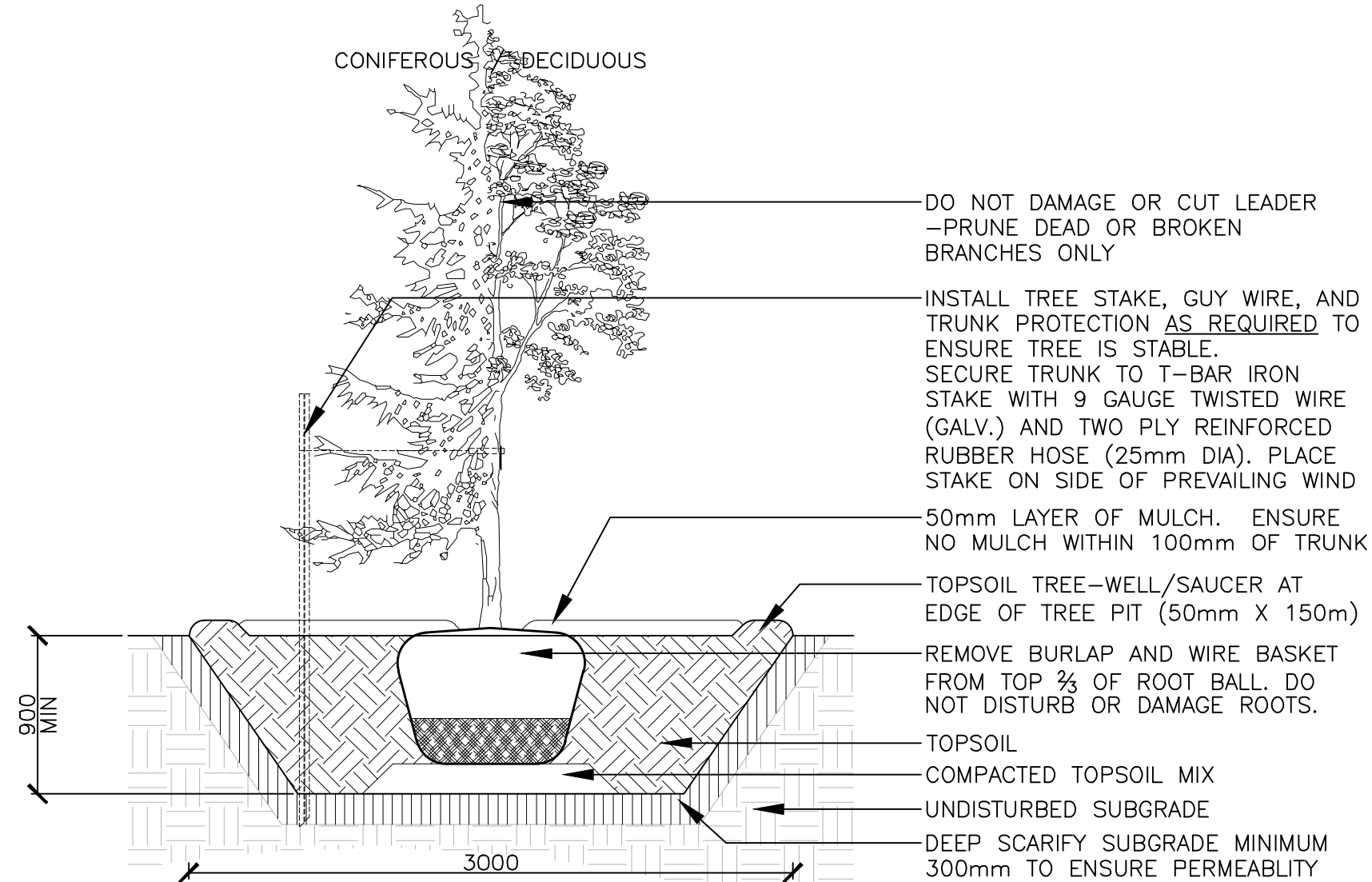
Drawing:
LANDSCAPE PLAN

Scale: 1:200	Date: 21 OCT, 2022
Design By: SC & SM	Drawn By: SC
Project Number: #18909	Sheet Number: L 1.1



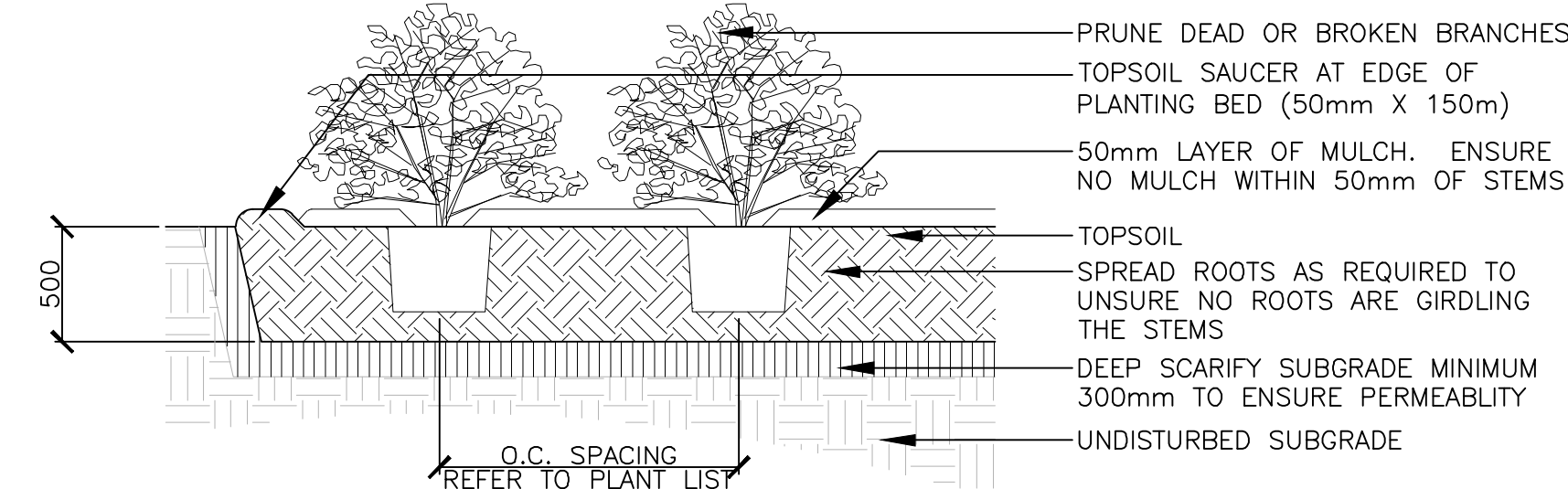
Label Save: 2022-05-17 10:56:52 AM
 File Location: Z:\Projects\2022-01 Ronald McDonald House\Drawings\SPA\SPA 02\2022-01 LRMHC_SPA02 (L-Plan).dwg

D07-12-22-1076



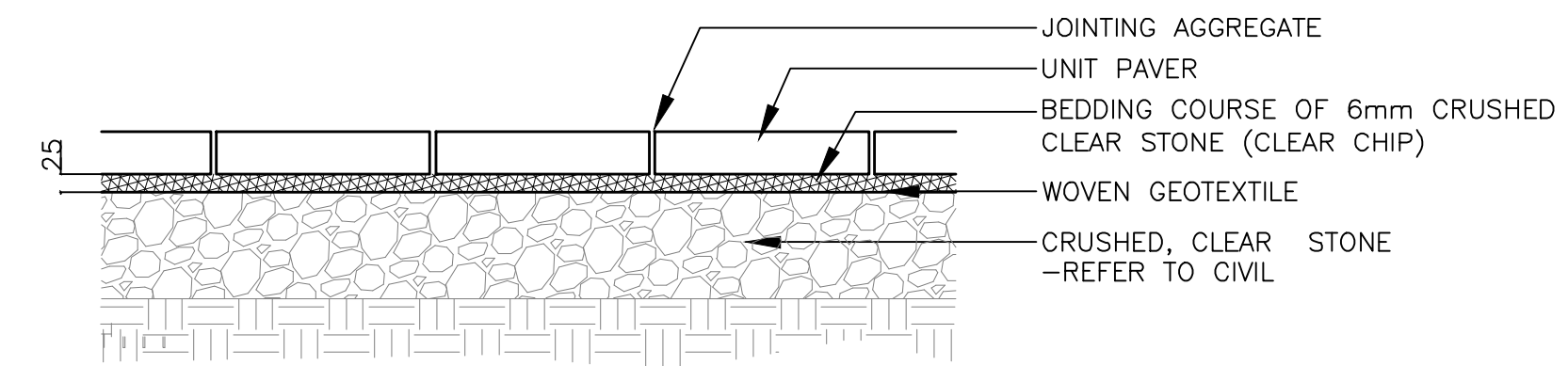
- NOTES:
- TREE STAKES ARE GENERALLY ARE TO BE USED FOR CONDITIONS WHERE THE INSTALLED TREE IS UNSTABLE AND/OR BECOMES UNSTABLE
 - ALLOW 10mm TO 25mm SLACK ON GUY WIRE SUPPORT FOR TREE
 - TOP OF ROOT BALL TO RETAIN SAME ELEVATION AS GROWING CONDITIONS
 - REMOVE STAKES ONE YEAR AFTER INSTALL
 - INSTALL STAKE BEYOND EDGE OF ROOT BALL

1 TREE PLANTING 1:30



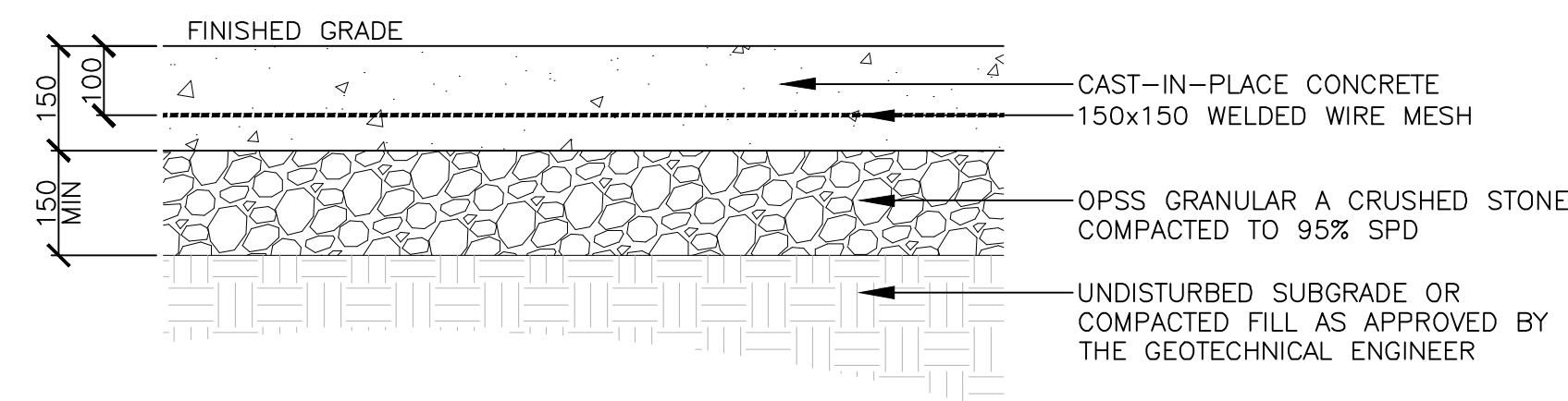
- NOTES:
- TOP OF ROOT BALL TO RETAIN SAME ELEVATION AS GROWING CONDITIONS

2 SHRUB PLANTING 1:30

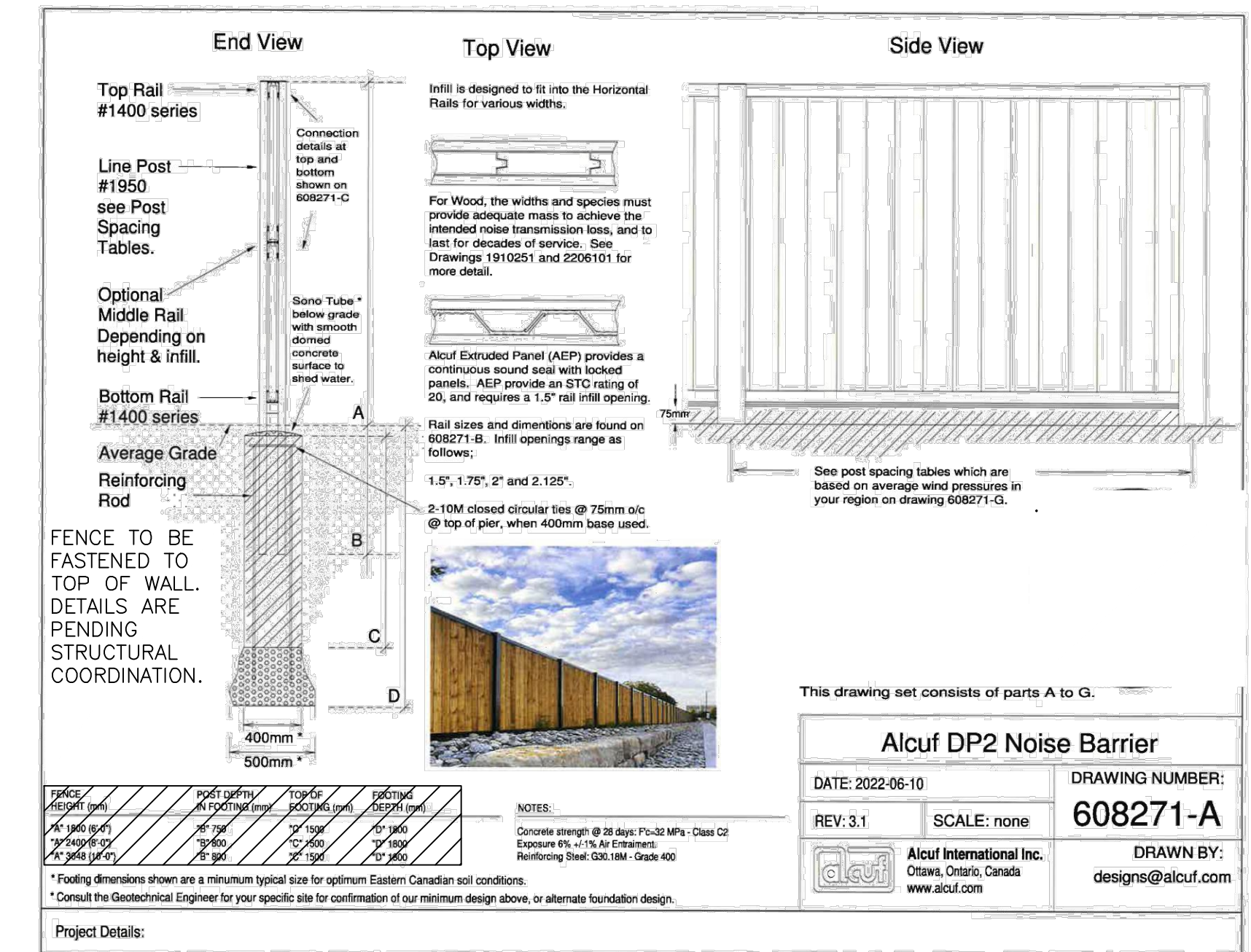


- NOTES:
- JOINTING AGGREGATE TO MATCH ASTM #8 OR 3mm (1/8") GRANITE CHIP PER UNIT PAVER MANUFACTURER'S DIRECTION FOR PERMEABLE PAVER MODEL

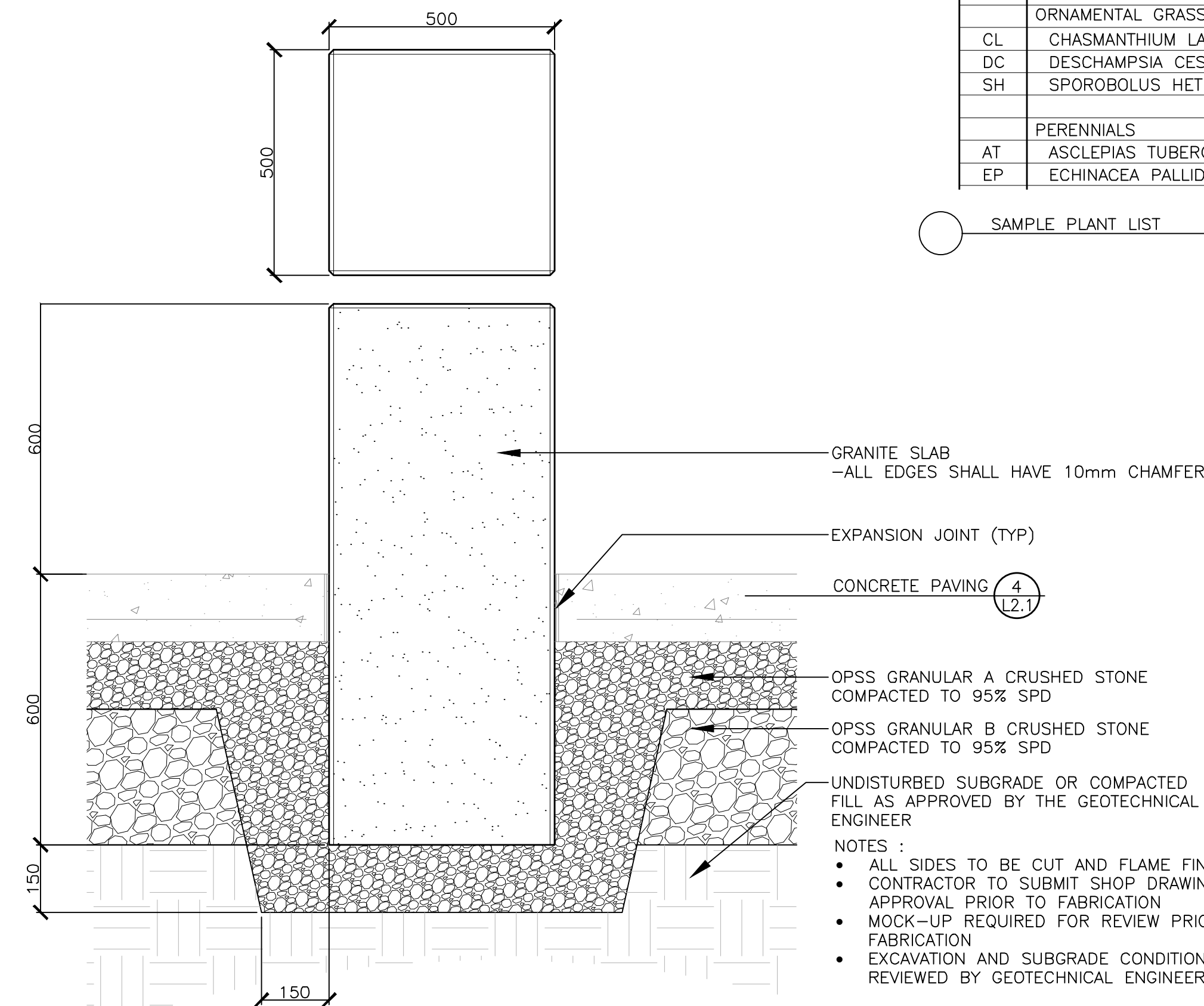
3 UNIT PAVING 1:10



4 CONCRETE PAVING 1:10



5 WOOD BOARD PRIVACY FENCE NTS



6 GRANITE BOLLARD 1:10

SYM.	BOTANICAL NAME	COMMON NAME	QTY.	SIZE	REMARKS
DECIDUOUS TREES					
AR	ACER RUBRUM	RED MAPLE	02	70mm CAL.	B&B / W.B.
AF	ACER X FREEMANII 'CELEBRATION'	CELEBRATION MAPLE	01	70mm CAL.	B&B / W.B.
AC	AMELANCHIER CANADENSIS	SHADBLow SERVICEBERRY	03	1800mm HT.	B&B / W.B. MULTI-STEM
PT	POPULUS TREMULOIDES	TREMBLING ASPEN	10	50MM CAL.	B&B / W.B. MULTI-STEM
QR	QUERCUS RUBRA	RED OAK	04	70mm CAL.	B&B / W.B. PLANT IN SPRING
RP	ROBINIA PSEUDOACACIA	BLACK LOCUST	02	70mm CAL.	B&B / W.B.
UM	ULMAS X MORTON	ACCOLADE ELM	02	70mm CAL.	B&B / W.B.
OV	OSTRYA VIRGINIANA	IRON WOOD	03	70mm CAL.	B&B / W.B.
CONIFERIOUS TREES					
PP	PICEA PUNGENS	COLORADO SPRUCE	01	2400mm HT.	B&B / W.B.
SHRUBS					
HK	HYPERICUM KALMIANUM	ST. JOHN'S WORT	--	2 GAL. POT	
RA	RHUS AROMATICA	FRAGRANT SUMAC	--	2 GAL. POT	
SA	SPIREA ALBA	WHITE MEADOWSWEET	--	2 GAL. POT	
ORNAMENTAL GRASS					
CL	CHASMANTHIUM LATIFOLIUM	NORTHERN SEA OATS	--	1 GAL. POT	
DC	DESCHAMPSIA CESPITOSA	TUFFHAIR GRASS	--	1 GAL. POT	
SH	SPOROBOLUS HETEROLEPIS	PRAIRIE DROPSEED	--	1 GAL. POT	
PERENNIALS					
AT	ASCLEPIAS TUBEROSA	BUTTERFLY MILKWEED	--	1 GAL. POT	
EP	ECHINACEA PALLIDA	PALE PURPLE CONEFLOWER	--	1 GAL. POT	

SAMPLE PLANT LIST

Key Plan

No.	Revision	Date
2	SITE PLAN 2ND SUBMISSION	17 MAR, 2023
1	ISSUED FOR SPA	16 DEC, 2022

North: Stamp:

CSW Landscape Architecture
Urban Design
Site Planning
Recreation and Park Planning
Project Management

319 McRae Avenue, Suite 502, Ottawa, Ontario, K1Z 0B9
Tel: (613) 729-4536

- All measurements in millimeters unless specified otherwise. Do not scale drawing. All drawings to be read in conjunction with written specifications.
- Copyright reserved. This drawing is the exclusive property of CSW Landscape Architects Ltd. and shall not be used without the consent thereof.
- This Drawing may not be used for construction until signed by the landscape architect. It is the responsibility of the contractor to:
 - check and verify all dimensions on site;
 - report all errors and/or omissions to the landscape architect;
 - comply with all pertinent codes and by-laws;
 - check and verify locations of all underground services with all local utilities prior to any digging.

Project: **RONALD McDONALD HOUSE CHARITIES**
407 SMYTH ROAD
OTTAWA., ONTARIO

Drawing: **LANDSCAPE DETAILS**

Scale: AS NOTED	Date: 21 OCT, 2022
Design By: SC & SM	Drawn By: SC
Project Number: #18909	Sheet Number: L 2.1

Last Saved: 2023-03-17 10:36:37 AM
File Location: Z:\Projects\2023\01-Ronald McDonald House\Drawings\SPA\SPA-02\02060-01-RM\LC_SPA02 (Details).dwg

D07-12-22-0176