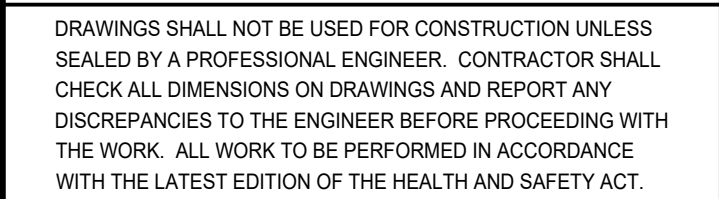


APPROVED
By Geraldine Wildman at 3:39 pm, Mar 09, 2023



VOLUMES:	= (9.28+0)/2	= 4.64 x 2.37	= 11.00m³
	= (12.23+9.28)/2	= 10.755 x 10	= 107.55m³
	= (12.23+9.39)/2	= 10.81 x 10	= 108.10m³
	= (9.39+7.4)/2	= 8.40 x 10	= 84.00m³
	= (7.4+3.39)/2	= 5.40 x 10	= 54.00m³
	= (3.39+0)/2	= 1.695 x 1.29	= 2.187m³
PR. VOLUME = 366.84m³			



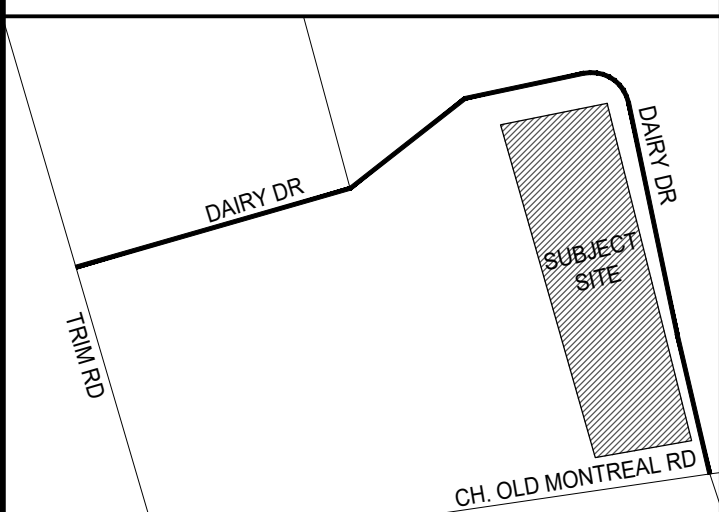
No.	DATE	REVISION	BY
1	2021.09.10	ISSUED FOR SITE PLAN APPROVAL	CR
2	2022.08.24	ISSUED FOR OWNER'S REVIEW	AT
3	2022.09.07	ISSUED FOR SECOND SPA SUBMISSION	AT

LEGAL INFORMATION

PART OF
LOT 29
CONCESSION 1 (OLD SURVEY)
GEOGRAPHIC TOWNSHIP OF CUMBERLAND
CITY OF OTTAWA
FORMERLY IN THE CITY OF CUMBERLAND

DRAWING REFERENCES:

1. TOPOGRAPHICAL INFORMATION SHOWN ON THIS PLAN WAS COLLECTED BY MALLOT CREEK GROUP INC.
2. LEGAL BOUNDARY INFORMATION SHOWN ON THIS PLAN WAS TAKEN FROM A PLAN PREPARED BY WEBSTER & SIMMONDS SURVEYING LTD., 2002, PLAN 4R-1795
3. GEOTECHNICAL INFORMATION SHOWN ON THIS PLAN WAS TAKEN FROM A REPORT PREPARED BY PATERSON GROUP INC., DATED JUNE 28TH 2011, REPORT# G0386-11
4. INFORMATION RELATED TO THE EXISTING SERVICES ON AND AROUND THE SITE WAS OBTAINED FROM PLANS PREPARED BY ROBINSON CONSULTANTS FOR THE CITY OF OTTAWA, TITLED DAILY DRIVE EXTENSION AND TRIM ROAD PARK & RIDE EXPANSION, GRADING AND DRAINAGE, DATED APRIL 26TH 2013, PROVIDED BY THE CITY OF OTTAWA.
5. ARCHITECTURAL INFORMATION SHOWN ON THIS PLAN WAS TAKEN FROM PLANS PREPARED BY MALLOT CREEK GROUP
6. EXISTING SERVICES FOR THE SITE WAS TAKEN FROM A PLAN PREPARED BY DAVID MCMAUS ENGINEERING LTD., TITLED SITE SERVICING AND GRADING PLAN, DATED MARCH 25TH 2002
7. LANDSCAPING PLANS PREPARED BY THAKAR ASSOCIATES DESIGN INC. TREE CONSERVATION REPORT PREPARED BY ARBORSPEC



KEY PLAN

N.T.S



Mallot Creek Group inc.

294 Mill Street East, Suite 201
Elora, ON N0B 1S0
T: 519-846-1830
F: 519-846-1833
info@mallotcreek.com
www.mallotcreek.com



APETITO HFS
1010 DAIRY DR
OTTAWA, ON K4A 3N3

PROPOSED EXPANSIONS

STORMWATER MANAGEMENT POND CROSS-SECTIONS



DESIGN BY:	AT
DRAWN BY:	KW
CHECKED BY:	GB
DATE:	2021.06.18
SCALE:	
PROJECT NUMBER:	21008

CURRENT REVISION

C4.20