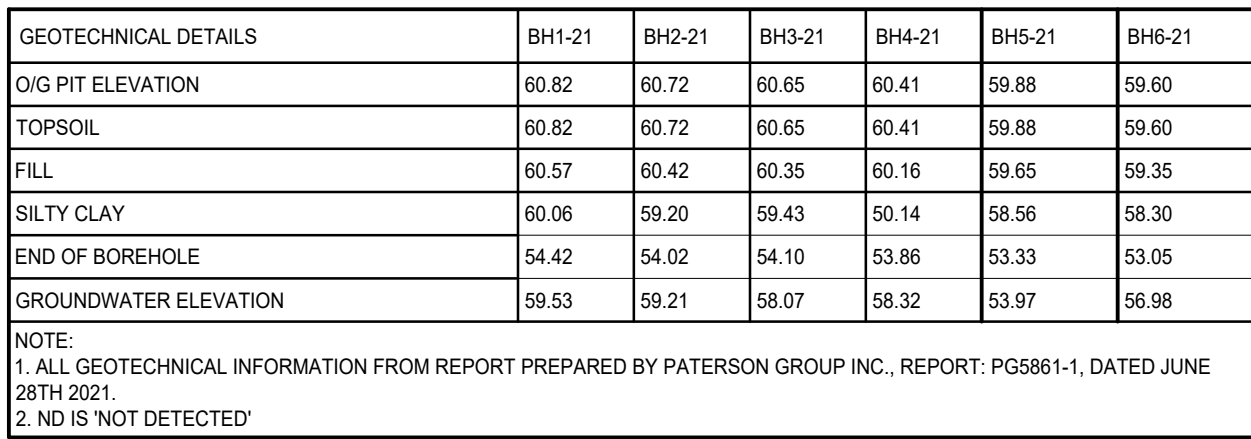


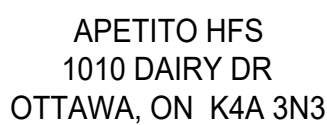
APPROVED
By Geraldine Wildman at 3:41 pm, Mar 09, 2023



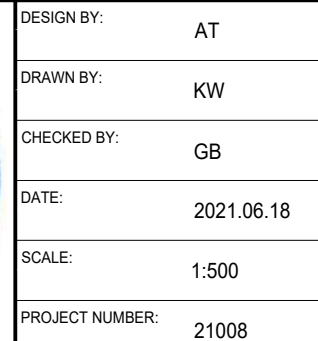
No.	DATE	REVISION
1	2021 09 10	ISSUED FOR SITE PLAN APPROVAL
2	2022 08 24	ISSUED FOR OWNER'S REVIEW
3	2022 09 07	ISSUED FOR SECOND SPA SUBMISSION

PART OF
LOT 29
CONCESSION 1 (OLD SURVEY)
GEOGRAPHIC TOWNSHIP OF CUMBERLAND
CITY OF OTTAWA
FORMERLY IN THE CITY OF CUMBERLAND

1. TOPOGRAPHICAL INFORMATION SHOWN ON THIS PLAN WAS COLLECTED BY MALLOT CREEK GROUP INC.
2. LEGAL BOUNDARY INFORMATION SHOWN ON THIS PLAN WAS TAKEN FROM A PLAN PREPARED BY WEBSTER & SIMMONS SURVEYING LTD. 2002, PLAN 4R-1795
3. GEOTECHNICAL INFORMATION SHOWN ON THIS PLAN WAS TAKEN FROM A REPORT PREPARED BY PATERSON GROUP INC., DATED 06-28TH-01, REPORT NO. 05861-01
4. INFORMATION RELATED TO THE EXISTING SERVICES OF DARY DRIVE WAS TAKEN FROM PLANS PREPARED BY ROBINSON CONSULTANTS FOR THE CITY OF OTTAWA, TITLED DARY DRIVE EXTENSION AND TRIM ROAD PARK & RIDE EXPANSION, GRADING AND DRAINAGE, DATED APRIL 28TH, 2013, PROVIDED BY THE CITY OF OTTAWA.
5. ARCHITECTURAL INFORMATION SHOWN ON THIS PLAN WAS TAKEN FROM PLANS PREPARED BY MALLOT CREEK GROUP
6. EXISTING SERVICES FOR THE SITE WAS TAKEN FROM A PLAN PREPARED BY DAVID MCMAUS ENGINEERING LTD., TITLED SITE SERVICES AND GRADING PLAN, DATED MARCH 25TH 2002.
7. LANDSCAPING PLANS PREPARED BY THAKAR ASSOCIATES DESIGN, TREE CONSERVATION REPORT PREPARED BY ARBORSPHERE



PHASE 1 - SITE GRADING PLAN



C3.11